

THIS DRAWING IS UNPUBLISHED. RELEASED FOR PUBLICATION ,19 .

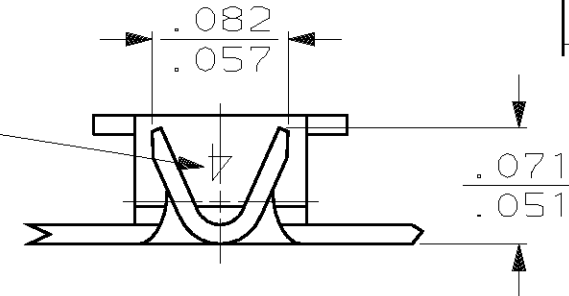
© COPYRIGHT 19

BY AMP INCORPORATED. ALL INTERNATIONAL RIGHTS RESERVED.

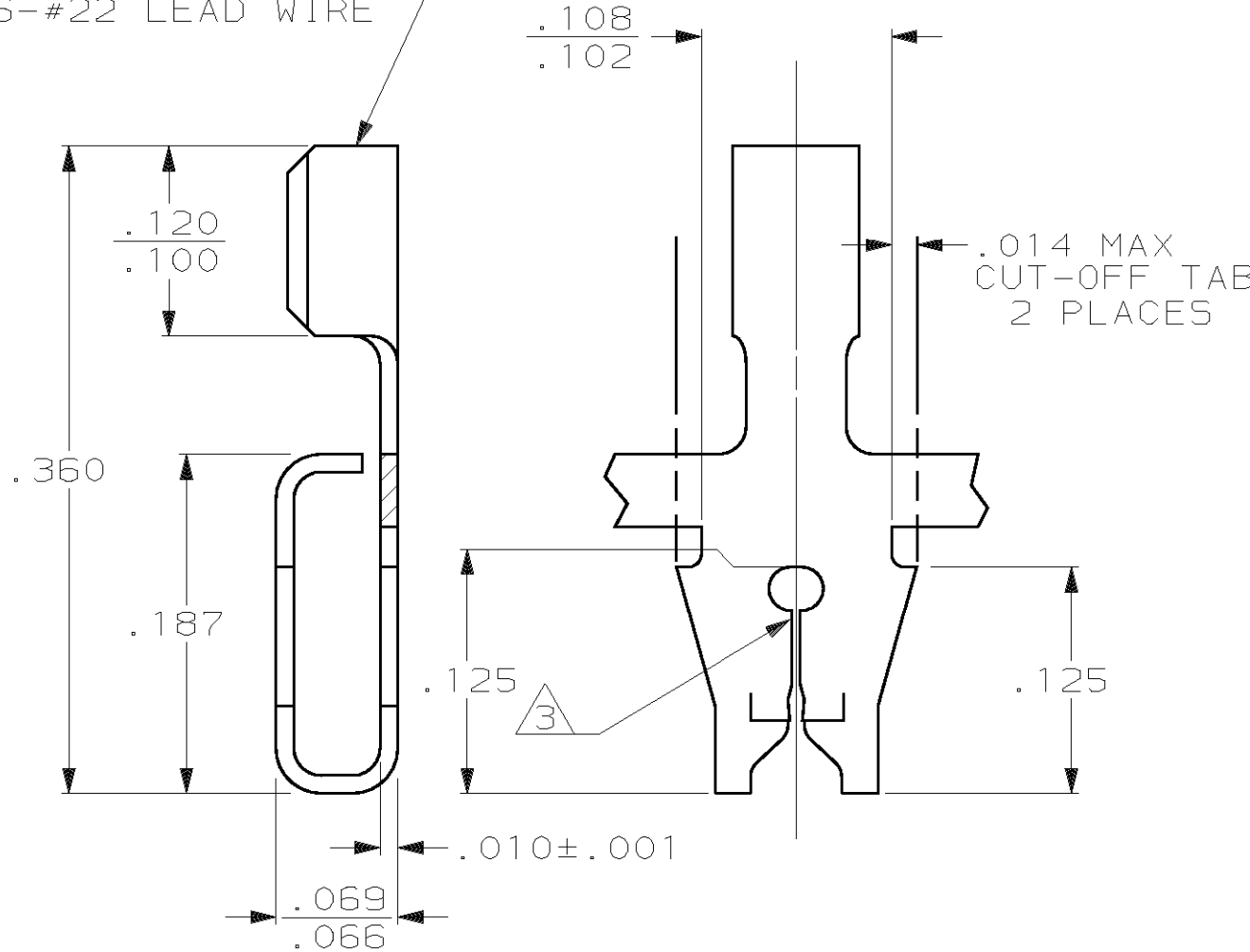
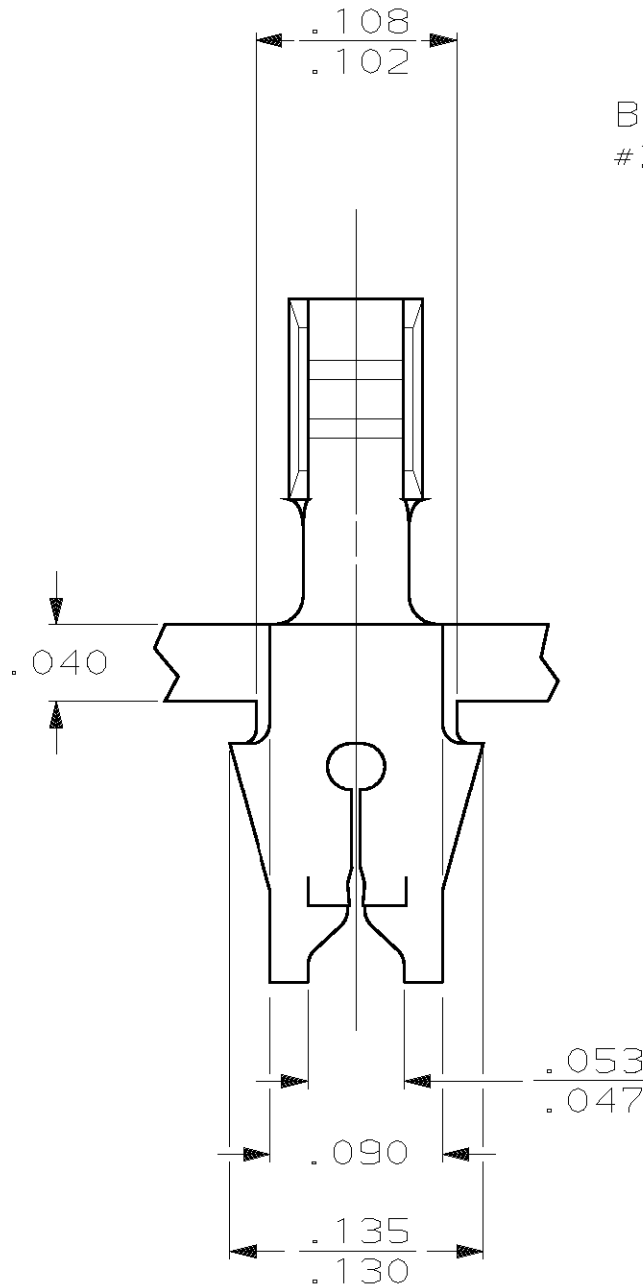
LOC AF DIST 50 P F

REVISIONS				
ZONE	LTR	DESCRIPTION	DATE	APPD
	J	REV STATUS -2 PER 0G3A-0282-01	16MAY01	MF KR

IDENTIFICATION NUMBER FOR MAGNET WIRE RANGE



BARREL TO ACCEPT #26-#22 LEAD WIRE



- ① MAG-MATE CAVITY SPECIFICATION.
- ② CONTINUOUS STRIP ON REELS WITH TERMINALS LOCATED ON .200 CENTERS.
- ③ SLOT ACCEPTS #33-#31 AWG COPPER MAGNET WIRE.

MINI-APPLICATOR	63039-2
MAG-MATE INSERTER	63039-1
REELING	PART NO

STRIP LENGTH ±.015	TYPE	WIDTH	±.002 HEIGHT	WIRE
.140	F	.055	.033	22
			.029	24
			.028	26
WIRE BARREL CRIMP				

DO NOT SCALE PRINT. UNLESS SPECIFIED DIMENSIONS IN INCHES
 TOLERANCES ON:
 2 PLC DEC ± -
 3 PLC DEC ± .010
 ANGLES ± -
 MATERIAL #4 HARD BRASS
 FINISH .000150 MIN TIN

DR 12/14/88 M.S. FEHER
CHK 12/16/88 P.M. FORTNEY
APPD 12/16/88 N.E. NEFF
APPD 12/16/88 C.G. ATHERTON
PRODUCT SPEC -
APPLICATION SPEC 114-2069
WEIGHT -

AMP AMP INCORPORATED
 Harrisburg, Pa. 17105

NAME: TERMINAL, F CRIMP, MAG-MATE™

SIZE B	FSCM NO 00779	DRAWING NO 63039
SCALE 10:1	SHEET 1 OF 1	