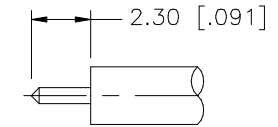
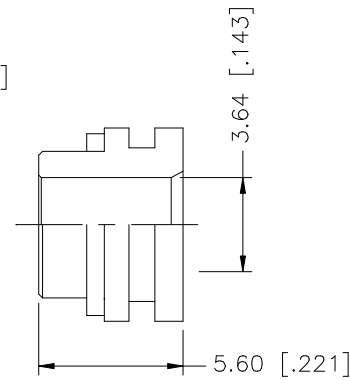
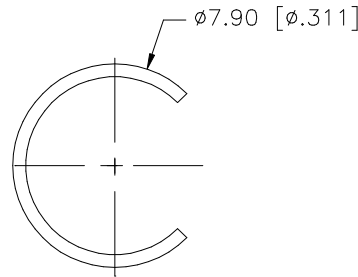
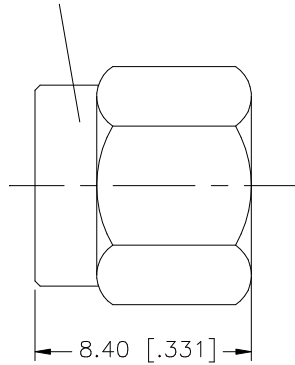


REV.	DATE	DESCRIPTION
NC	05/11/99	INITIAL RELEASE
A	12/18/06	UPDATE DRAWING FORMAT

1/4-36UNS-2B



RECOMMENDED
CABLE STRIPPING DIM'S

8					<small>UNLESS OTHERWISE SPECIFIED DIMENSIONS ARE IN MILLIMETERS. DIMENSIONS IN [] ARE IN INCHES AND FOR CUSTOMER REFERENCE ONLY.</small> <small>UNLESS OTHERWISE SPECIFIED TOLERANCES FOR MILLIMETERS ARE: 0.5 - 8mm ± 0.20mm 8 - 30mm ± 0.40mm 30 - 120mm ± 0.50mm</small> <small>UNLESS OTHERWISE SPECIFIED TOLERANCES FOR INCHES ARE: .020 - .315 = ± 0.007" .315 - 1.180 = ± 0.015" 1.180 - 4.724 = ± 0.020"</small>	APPROVALS	DATE	<h1 style="color: blue; text-align: center;">Amphenol Connex</h1>		
7				DRAWN		G.R.S.	12/18/06			
6				CHECKED				PART DESCRIPTION		
5				ISSUED				SMA DIRECT SOLDER PLUG (FOR .141" SEMI-RIGID, SHORT PROFILE CABLE)		
4				SHEET	1 OF 1		PART NO.			
3	RETAINER RING	BER. COPPER	NATURAL	1			132266			
2	GASKET	SILICONE	RED	1			DWG. NO. 132266.DWG			
1	BODY	BRASS	NICKEL	1			REV. A	SIZE A	SCALE NA	
	DESCRIPTION	MATERIAL	FINISH	QTY	DO NOT SCALE DRAWING	C:/132/132266.DWG				