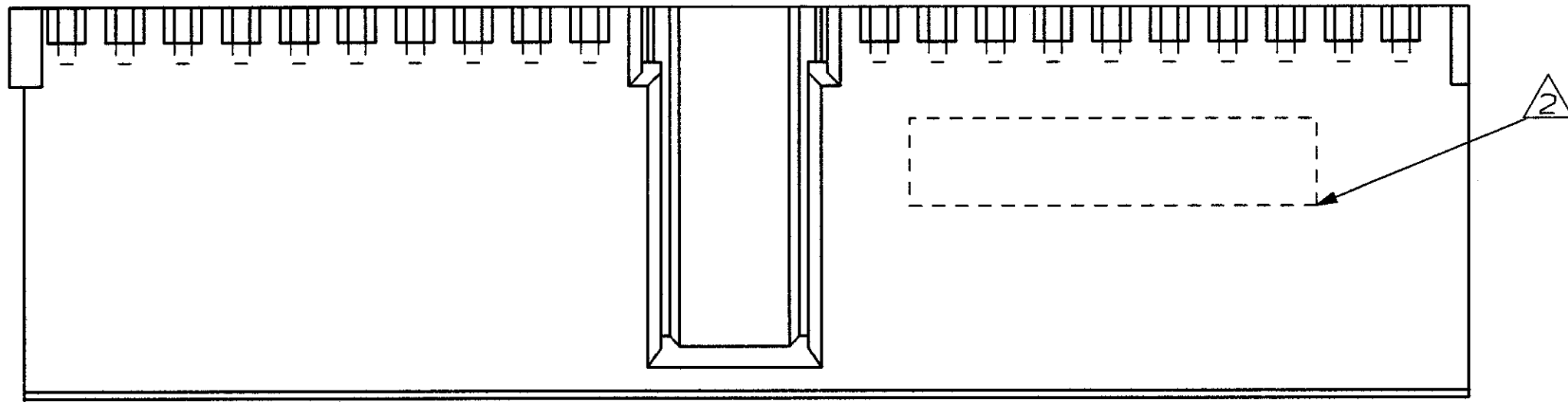


DO NOT SCALE
DIMENSIONS IN mm

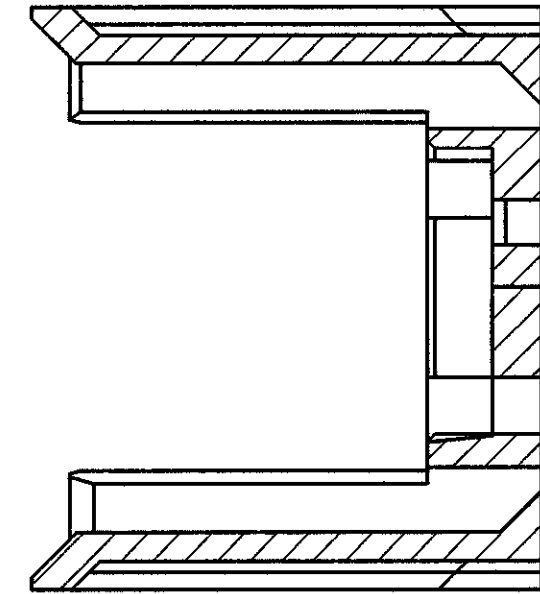
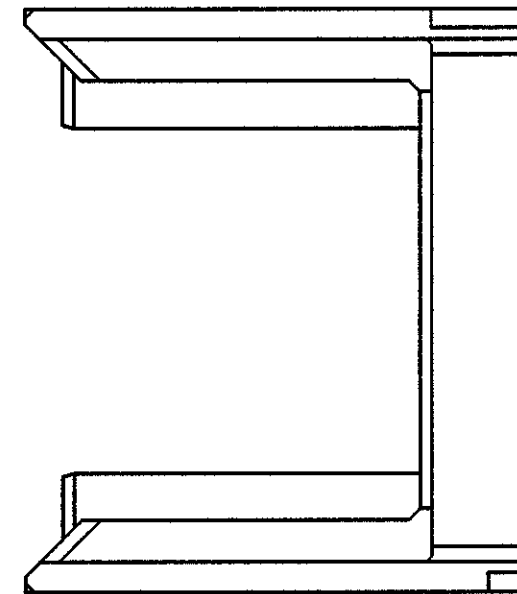
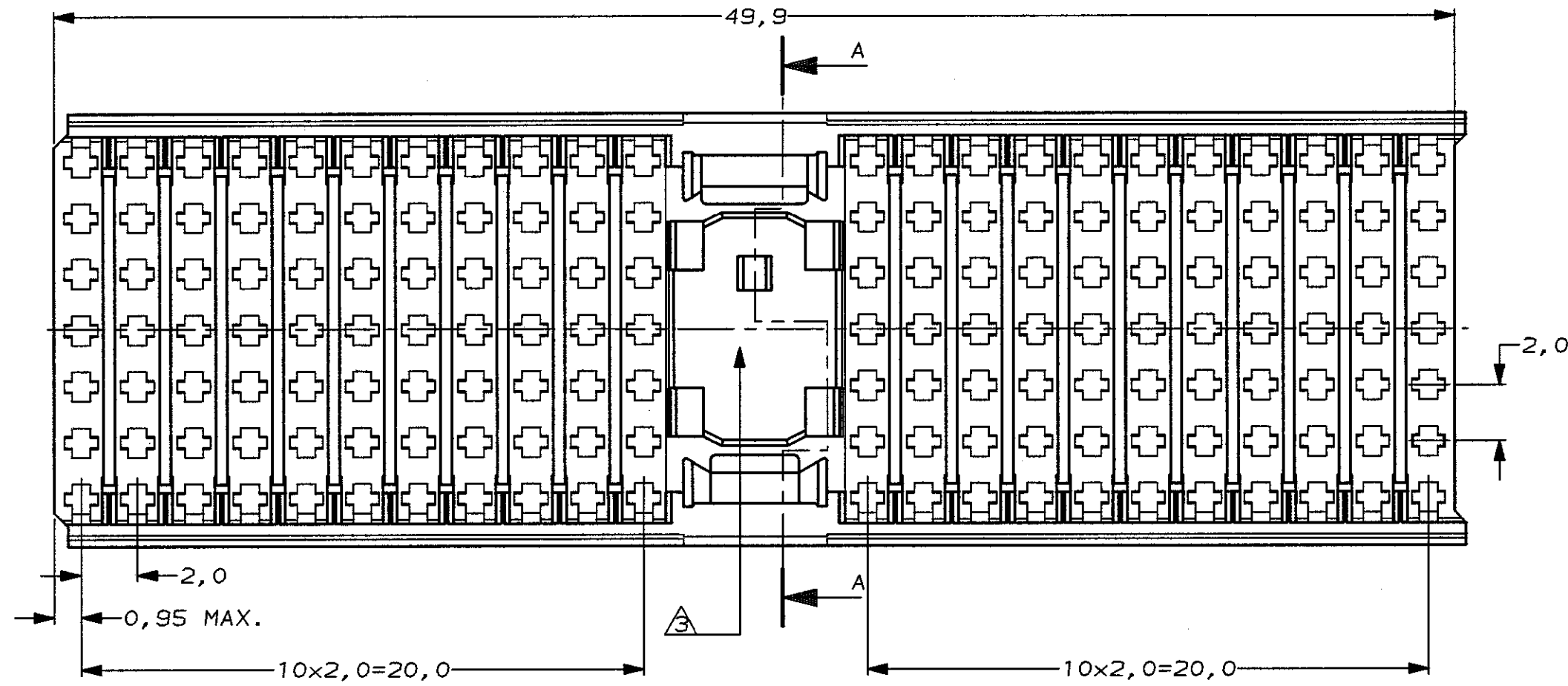
METRIC

THIRD ANGLE
PROJECTION

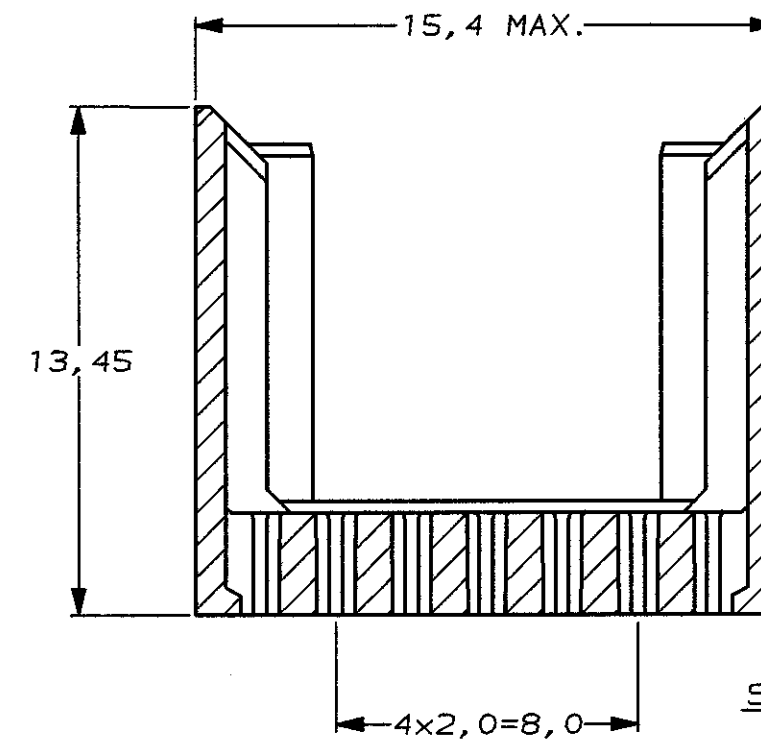
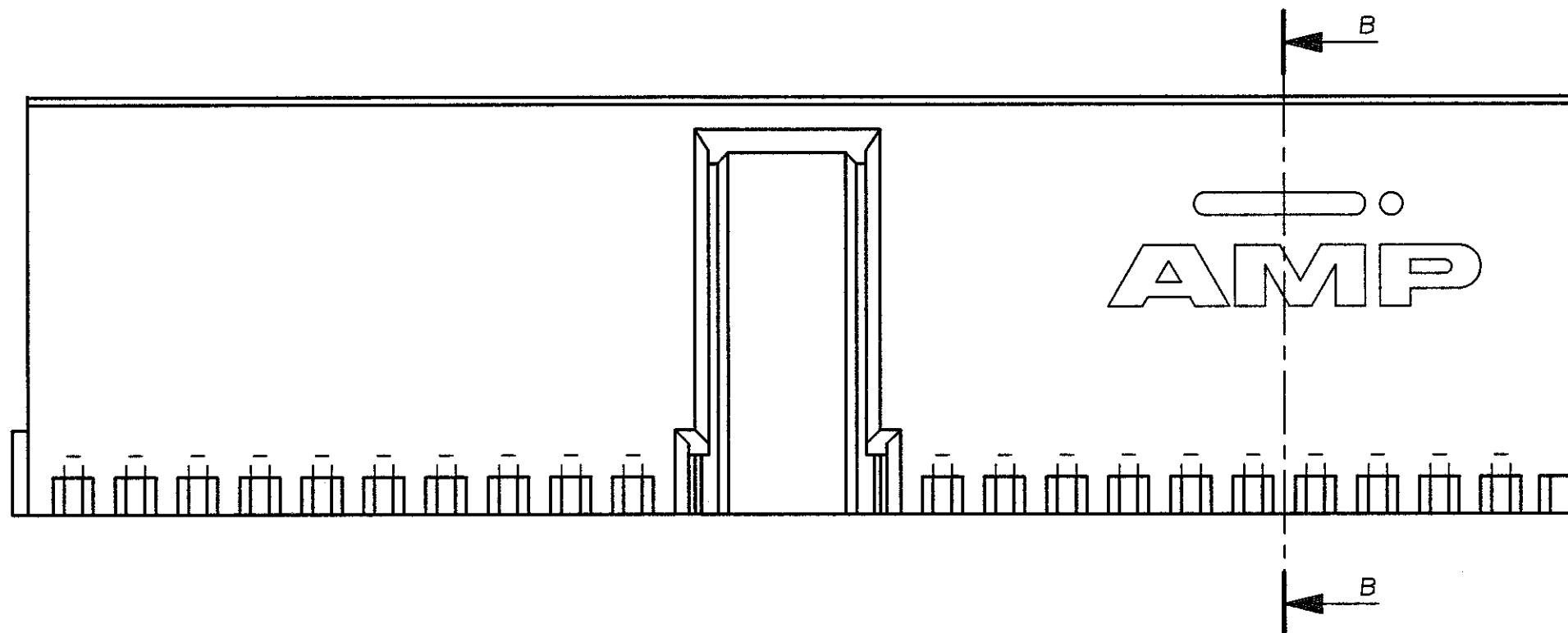


NOTES:

- 1 MATERIAL HOUSING: GLASSFILLED POLYESTER.
- 2 HOUSING PRINTED WITH PARTNUMBER AND DATE CODE.
- 3 AREA RESERVED FOR KEYING PART (BASIC P.N. 100525).




SECTION A-A



SECTION B-B

106137-2 AS SHOWN

FINISH		MATERIAL		PARTNUMBER								
-	-	-	-	CUSTOMER DRAWING FOR REFERENCE ONLY WILL NOT BE UPDATED								
© COPYRIGHT 1996 BY AMP-HOLLAND B.V. ALL INTERNATIONAL RIGHTS RESERVED. AMP PRODUCTS MAY BE COVERED BY U.S. AND FOREIGN AND/OR PATENTS PENDING.												
THIS DRAWING IS UNPUBLISHED AND/OR PATENTS PENDING.												
RELEASED FOR PUBLICATION												
C	EH-0764-96	DT	FvK	21-JUN-96	 AMP-HOLLAND B.V. s-Hertogenbosch, The Netherlands.							
B	EH-0238-93	LvdH	DS	2 JUNE '93								
A	EH-0081-93	S.M.	-	04-02-93								
O	H-10164	JvL	TS	30-11-92								
LTR. REVISION RECORD		DR.	CHK.	DATE	NAME Z-PACK 2mm HM 110 POS. SHROUD TYPE A							
DR.:	D. TRUREN	CHK.:	F. KONINGSBERG	APP.:	B. MOOIJ	DWG. No.	C-106137	REV. LTR.	C	SHEET	1 OF 1	A2
DATE:	21-JUN-96	DATE:	21-JUN-96	DATE:	6-9-96							