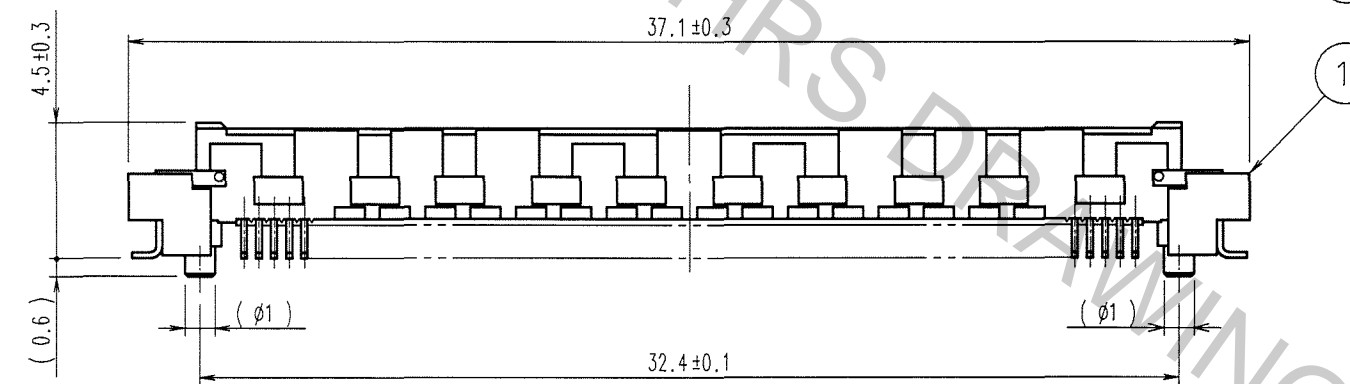
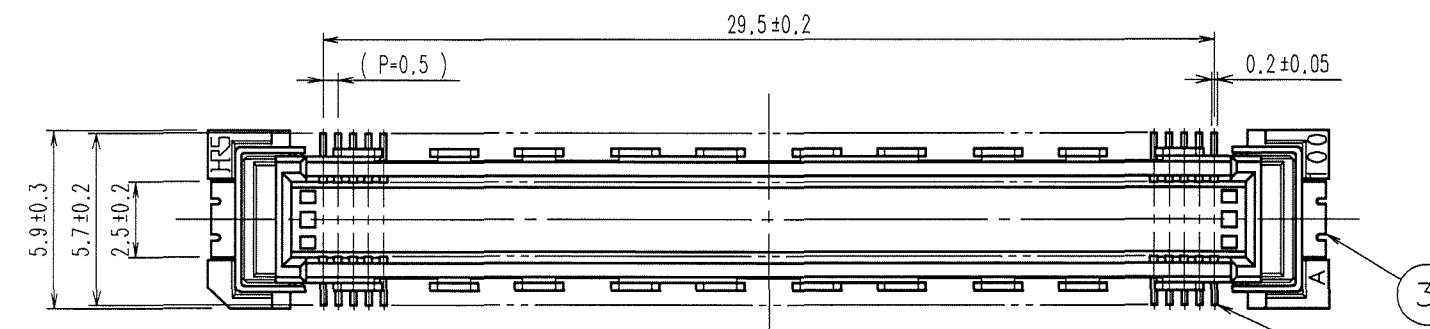
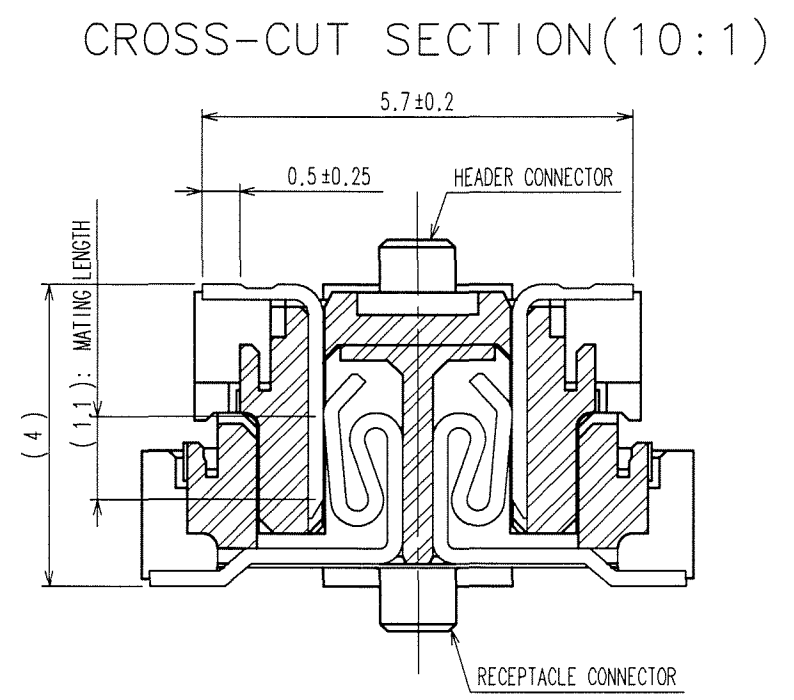
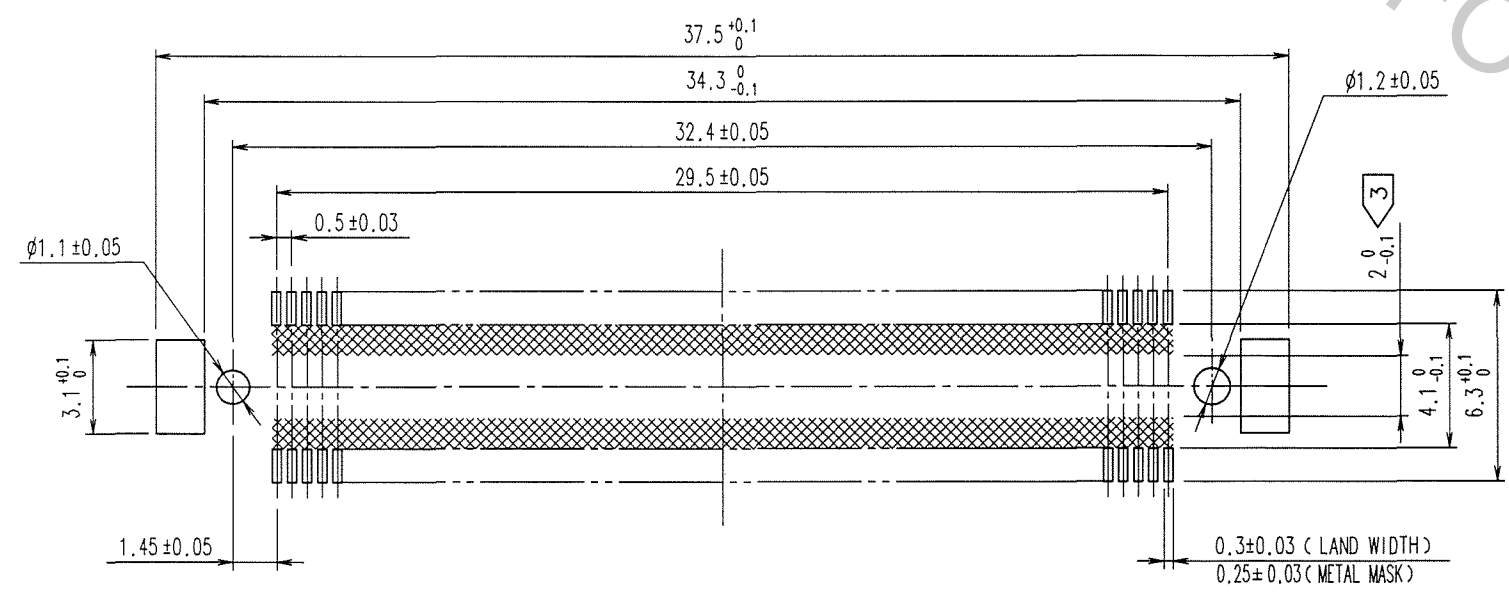


Apr.1.2017 Copyright 2017 HIROSE ELECTRIC CO., LTD. All Rights Reserved.

COUNT		DESCRIPTION OF REVISIONS			BY	CHKD	DATE	COUNT		DESCRIPTION OF REVISIONS			BY	CHKD	DATE
△								△							
△								△							
△								△							



RECOMMENDED LAND PATTERN



NOTES

- 1 SMT LEAD-COPLANARITY:0.1 MAX.
- 2 THIS PRODUCT HAS NO POLARITY TO MOUNT ON THE RECOMMENDED LAND PATTERN.
- 3 NO PATTERN SHALL BE DESIGNED IN THIS AREA , TO PREVENT CONTACTS FROM BEING TOUCHED WITH PATTERN.
- 4 THE DIMENSIONS IN PARENTHESES ARE FOR REFERENCE.

TO

1	LCP	BEIGE	UL94V-0	3	PHOSPHOR BRONZE	TIN-PLATING
NO.	MATERIAL	FINISH, REMARKS		NO.	MATERIAL	FINISH, REMARKS
CODE NO. (OLD)	CL			DRAWN	DESIGNED	CHECKED
CL				K.DOI	K. Sai	K. Ogawa
				06.04.17	06.04.17	06.04.18
				APPROVED	H. Okawa	
				RELEASED		
SCALE	DRAWING NO.			PART NO.		
4 : 1	EDC3-151969-25			FX10A-120P-SV1(71)		
UNITS	HRS HIROSE ELECTRIC CO., LTD			CODE NO.		
mm				CL570-0142-7-71		