

APPLICATOR STYLE CONVERSION CHART. Table with columns: Part Number, Revision, Description, Feed Type, Convert To, and Part Numbers Required. Includes a diagram of the applicator and various conversion paths for mechanical and pneumatic feeds.

APPLICATOR DATA. Table with columns: Crimp Size, Wire, Insul. and Type. Includes applicator instructions 408-10389.

TERMINAL DATA: TE TERMINAL. Table with columns: Terminal Name, Wire Strip Length, and Insulation Diameter Range. Includes terminal application specifications.

TERMINALS APPLIED. Table mapping TE Terminal to TE Terminal for various part numbers (66106-1 to 66106-6).

WIRE SIZE CRIMP HEIGHT mm [INCH]. Table showing crimp height settings for 24 AWG and 26 AWG wires.

- RECOMMENDED SPARE PARTS
GREASE BEARING SURFACES LIGHTLY
LUBRICATE DAILY PER THE APPLICATOR INSTRUCTION SHEET SUPPLIED WITH THE APPLICATOR.
APPLICATOR SPECIFIC DATA TO BE ENTERED INTO BLANK MEMORY CHIP AT ASSEMBLY.
ADJUSTMENT OF THE STRIPPER MAY BE REQUIRED WHEN MOVING THE APPLICATOR BETWEEN BENCH AND LEADMAKER APPLICATIONS.
APPLY PART NUMBER 1-23419-5 LOCTITE TO THREADS OF ITEMS 62.
GREASE THREADS, GROOVE AND O-RING ON ITEMS 35 & 252.
MAGNET, ITEM 166 MUST BE ORIENTED CORRECTLY IN ORDER TO PROPERLY ACTUATE THE COUNTER.
CRIMP HEIGHT REFERENCE SETTING WAS THE SETTING USED WHEN THE APPLICATOR WAS QUALIFIED AT THE FACTORY.
SPARE FEED CAM STORAGE LOCATION REFER TO INSTRUCTION SHEET FOR ADDITIONAL INFORMATION.
TO CONVERT THE APPLICATOR TO A NON-CARRIER CUTTING STYLE, REMOVE ITEM 13 AND ATTACH TO THE LOCATION ON THE BACK SIDE OF THE HOUSING.
WHEN ASSEMBLING A NON CRIMP HEIGHT ADJUST APPLICATOR (-6) USE SHIMS FROM ITEM 260 TO ACHIEVE A NOMINAL SHIM HEIGHT OF 4.96.

TERMINAL DATA: SOCKET ASSEMBLY. Table with columns: Terminal Name, Wire Strip Length, and Insulation Diameter Range. Includes terminal application specifications.

TERMINALS APPLIED. Table mapping TE Terminal to TE Terminal for various part numbers (66108-1 to 66108-5).

\*WARNING
ON INSTALLATION, SET WIRE DISC, ITEM 40 TO LARGEST WIRE SIZE SETTING. USE OF SETTINGS BELOW MINIMUM REQUIRED CRIMP HEIGHT SETTING WILL CAUSE DAMAGE TO CRIMP TOOLING.

Table with 7 columns: -77, -7, -6, -5, -2, -1, PART NO and 2 columns: DESCRIPTION, ITEM NO.

ATLANTIC VERSION
Shown on sheets 1 of 4 & 2 of 4
(Pacific version shown on sheets 3 of 4 & 4 of 4)

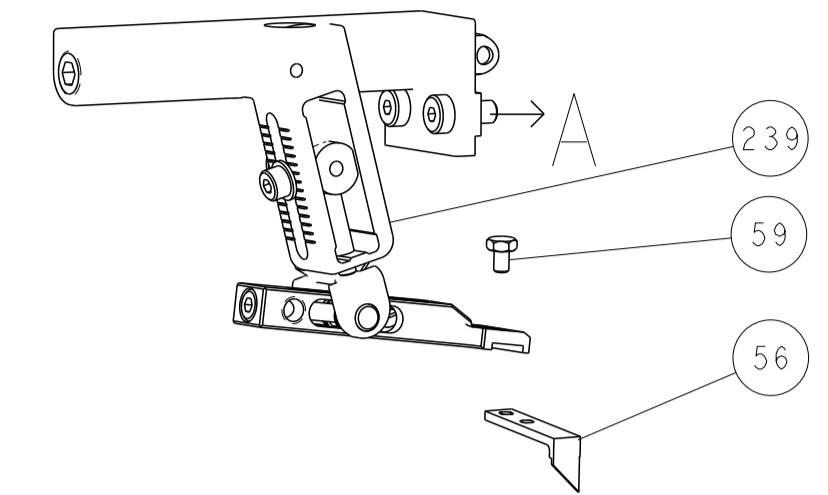
REVISIONS table with columns: P, LTM, DESCRIPTION, DATE, DWN, APVD. Includes revision C and D.

Main assembly drawing table with columns: P, LTM, DESCRIPTION, DATE, DWN, APVD. Lists various components like O-RING, PUSH ROD, BUSHING, FEED CAM, DETENT PIN, SPRING, RAM, CAM, WASHER, RETAINER, SCR, SHCS, MECHANICAL FEED ASSEMBLY, AIR FEED MODULE, TAG, SPACER, RING, MAGNET, COUNTER, SPRING, PIN, HOLDER, MEMORY CHIP, SERVO FEED LATCH ASM, FEED FINGER ASSEMBLY, SPACER, CRIMPER, DOCUMENTATION PACKAGE, DEPRESSOR, WIRE, WASHER, SPACER, TAG, IDENTIFICATION, SCREW, SCR, PAWL, FEED, SCR, SHCS, SCR, SCR, FEED CAM, FEED CAM, POST FEED, APPLICATOR BASIC ASSEMBLY, RAM, SCR, DISC, APPLICATOR SHIM PACK, RAM WASHER, FA HEAD, BOLT, SUPPORT, SCR, HEX HEAD, SPACER, STRIP GUIDE, ASSEMBLY, SPACER, CRIMPER, STRIPPER, INSERT, SPRING, STOP, SHEAR, SHEAR HOLDER, FLOATING SHEAR, ANVIL, SPACER, DEPRESSOR, BLOCK, CRIMPER SPACER, CRIMPER, INSULATION O, SPACER, CRIMPER, CRIMPER, WIRE PREMIUM.

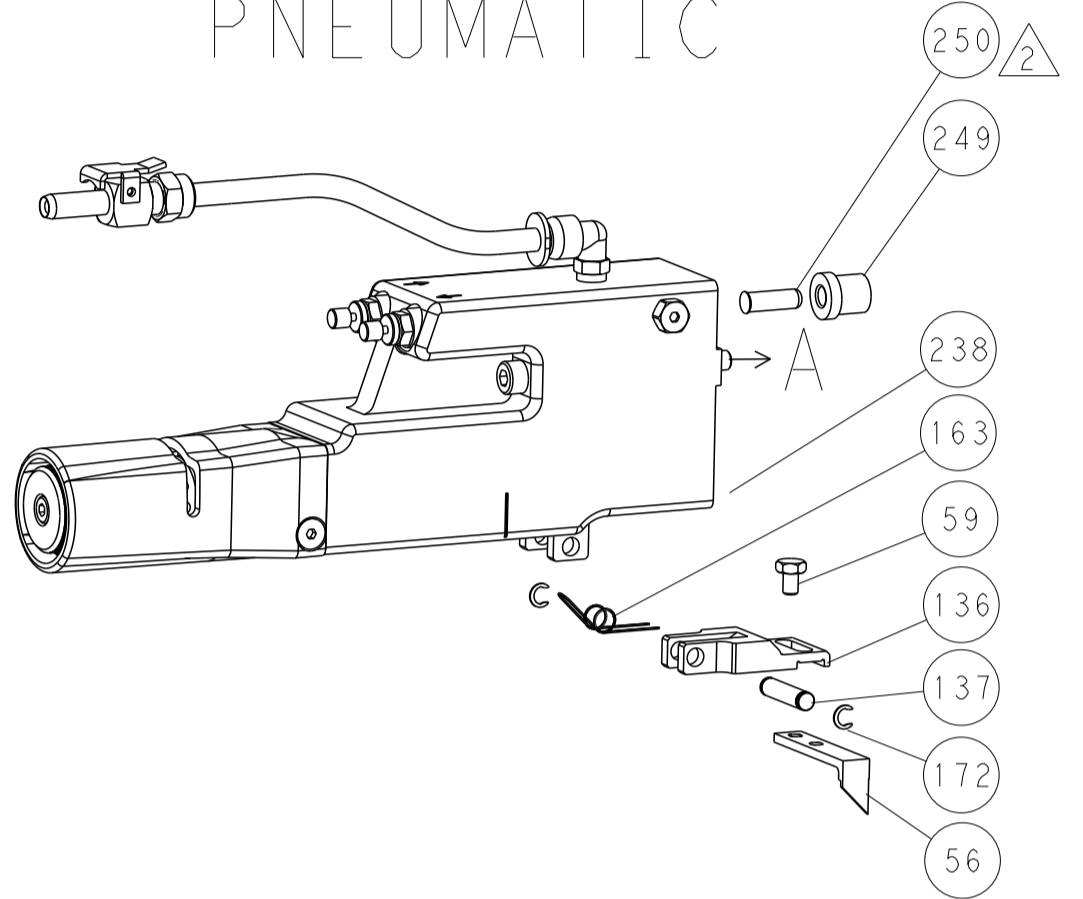
Product information block including dimensions, tolerances, materials, finishes, weights, scales, and drawing numbers. Includes logo for TE Connectivity and 'Customer Accessible Production Drawing'.

| LOC |    | DIST |     | REVISIONS   |      |     |      |
|-----|----|------|-----|-------------|------|-----|------|
| A   | 66 | P    | LYN | DESCRIPTION | DATE | OWN | APVD |
|     |    | -    |     | SEE SHEET 1 |      |     |      |

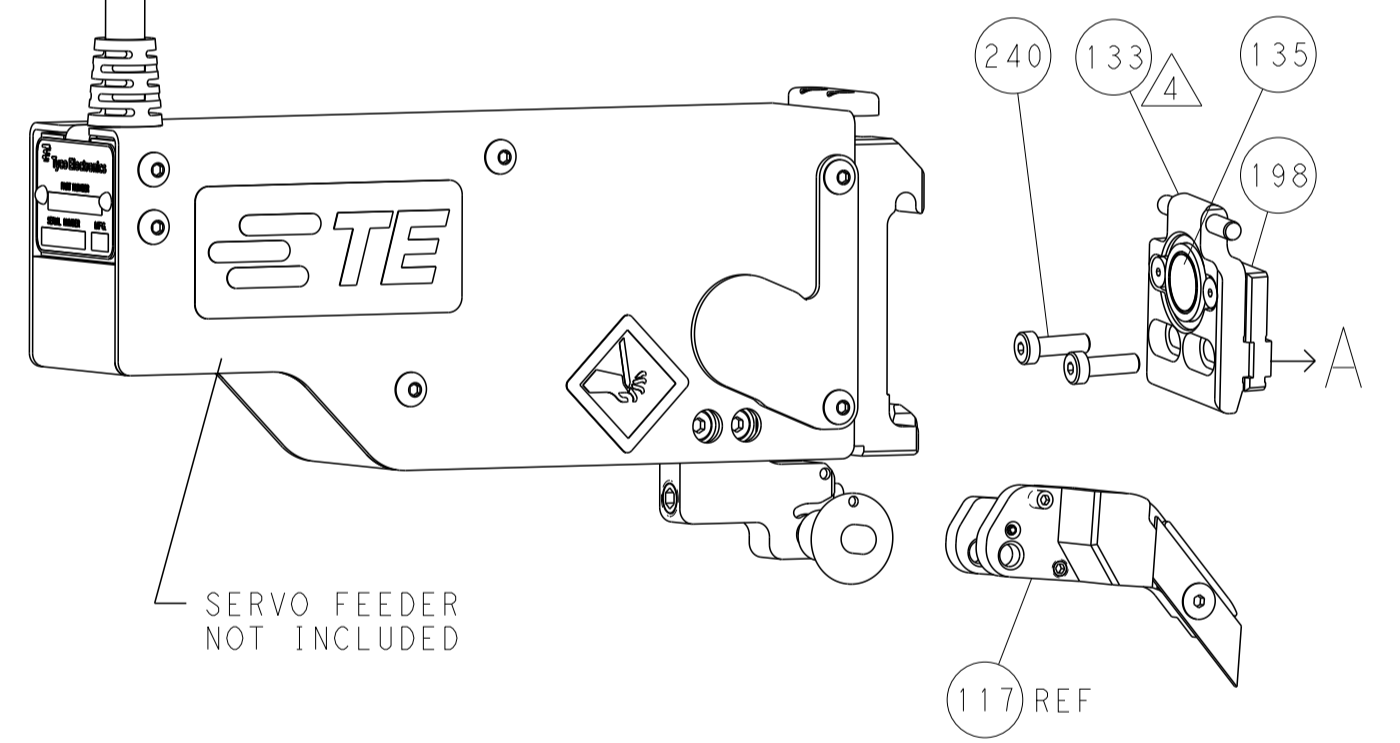
### FEED TYPE MECHANICAL



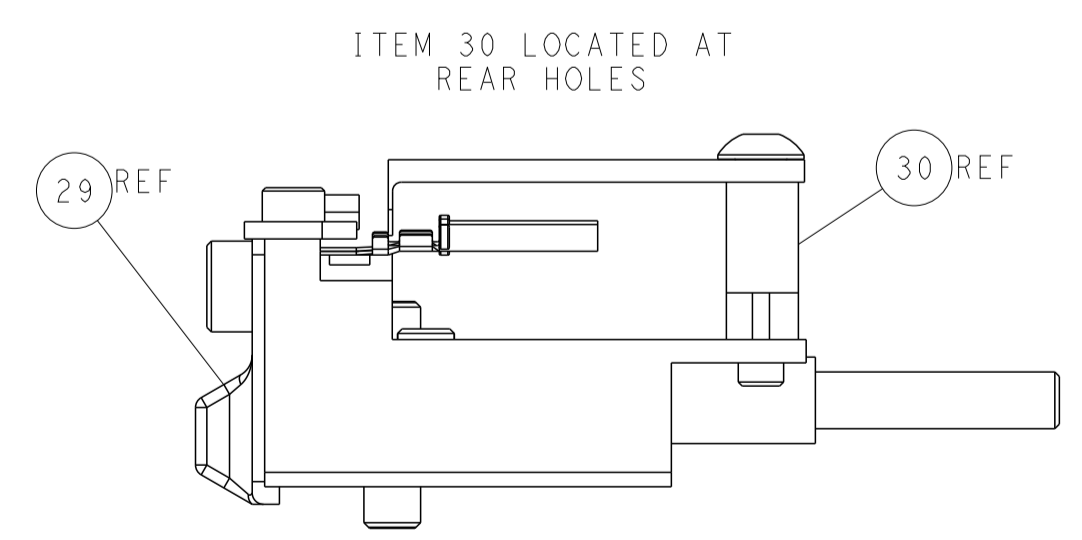
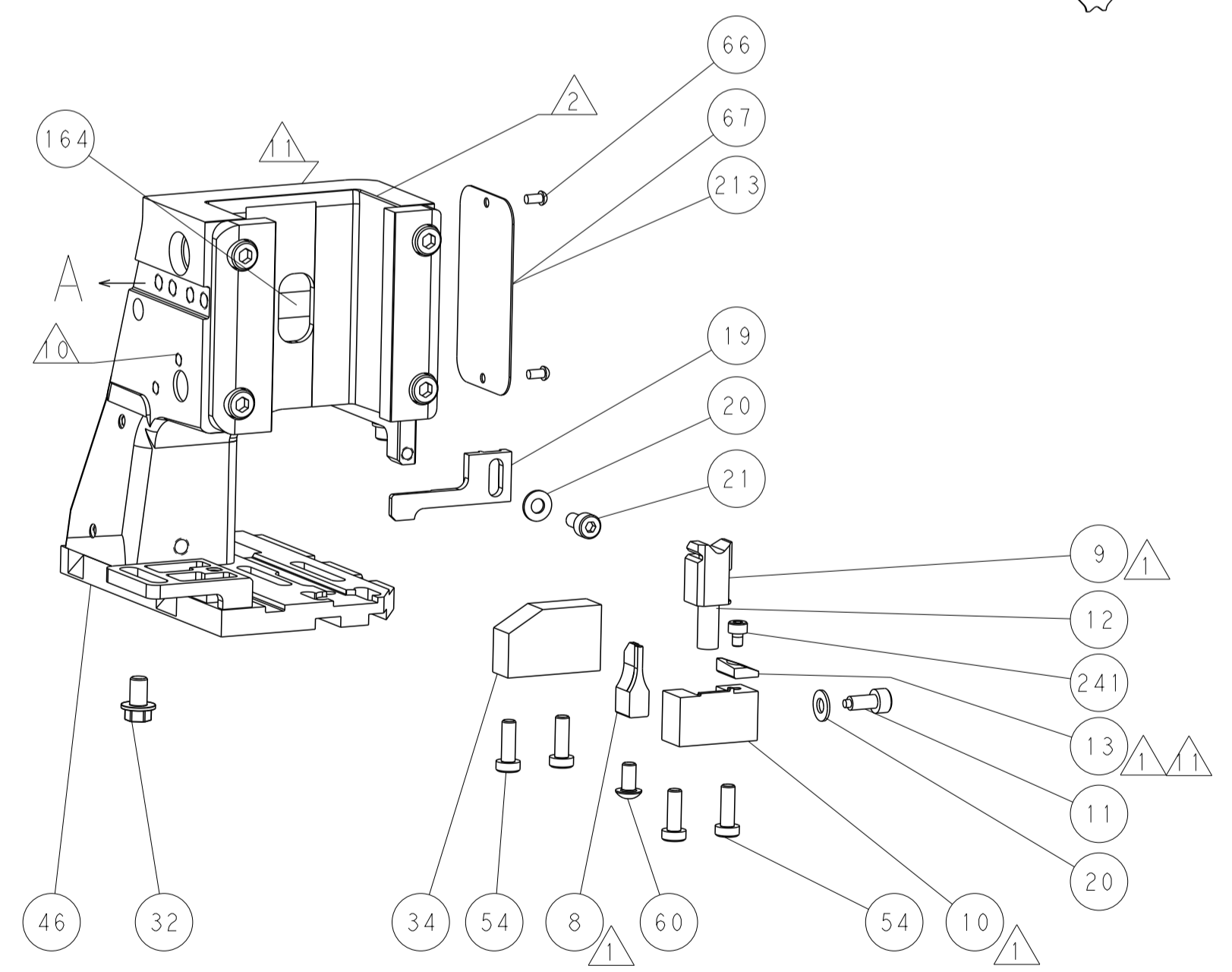
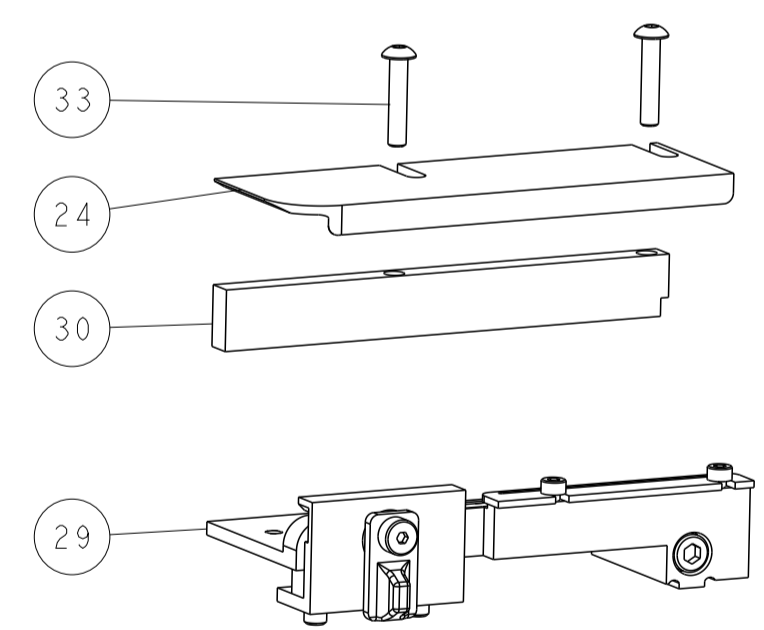
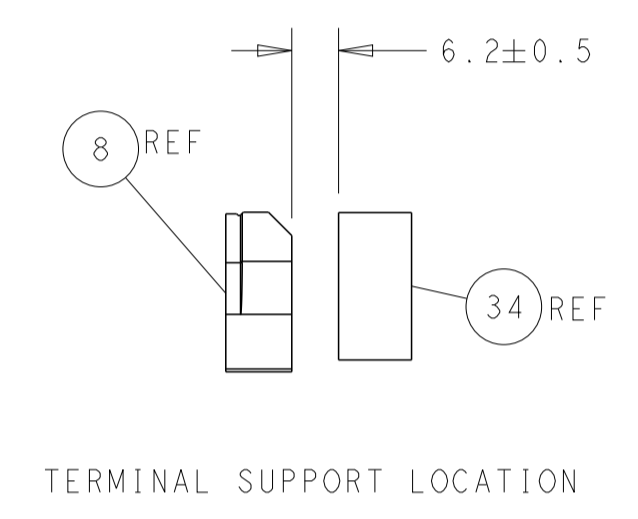
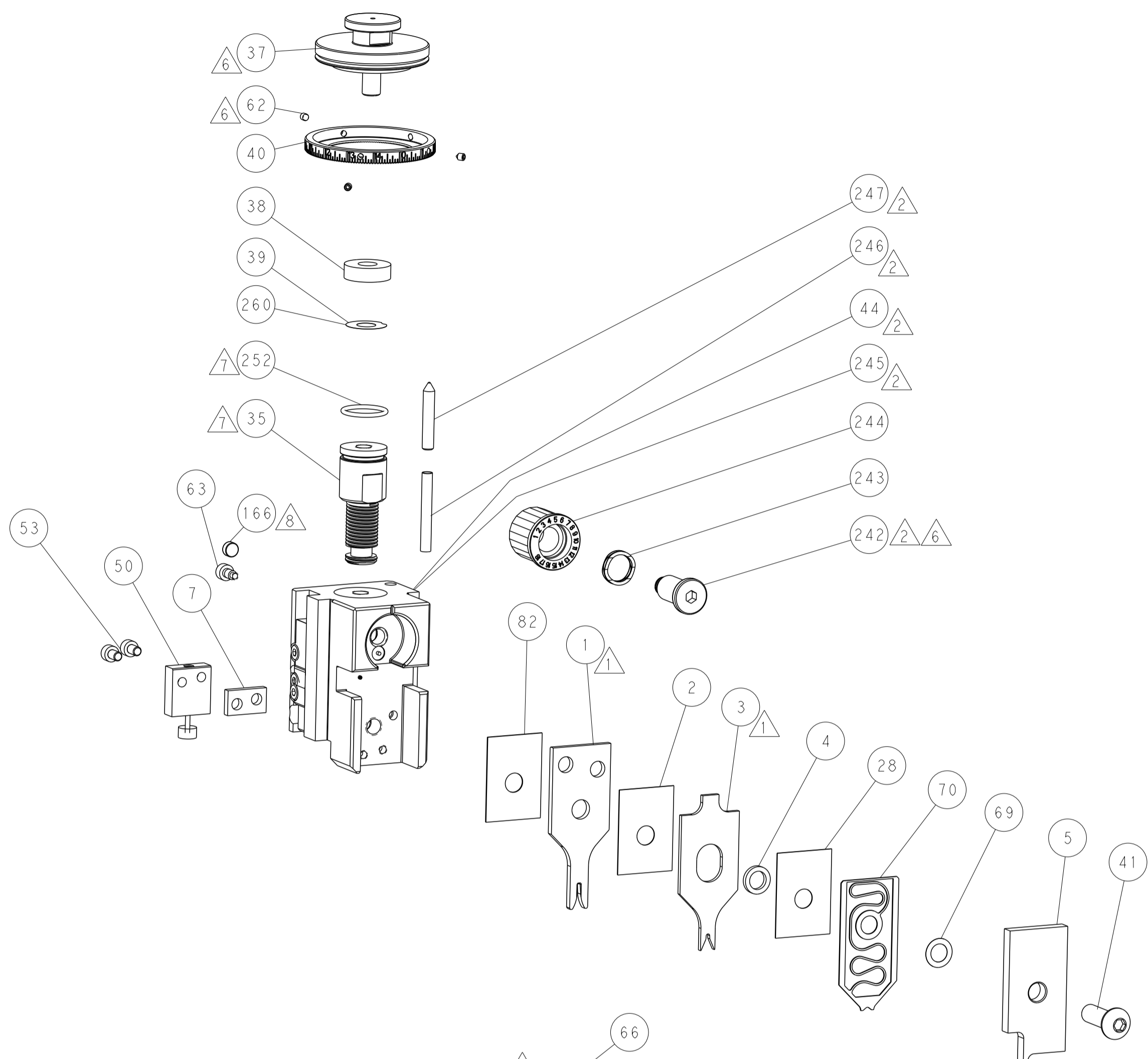
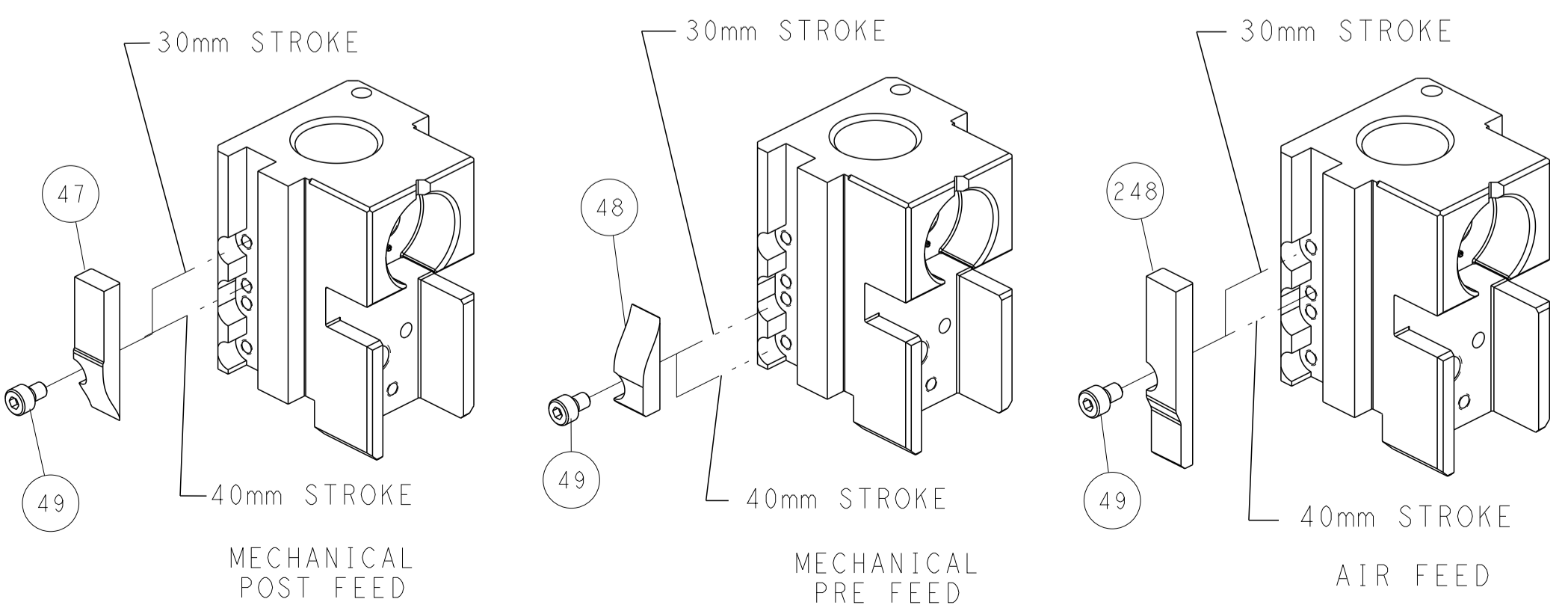
### PNEUMATIC



### SERVO LATCH PLATE



### CAM POSITIONS



FEED TRACK POSITION GUIDE BY INSULATION BARREL

**ATLANTIC VERSION**  
 Shown on sheets 1 of 4 & 2 of 4  
 (Pacific version shown on sheets 3 of 4 & 4 of 4)

|             |         |  |         |                           |  |                 |                           |
|-------------|---------|--|---------|---------------------------|--|-----------------|---------------------------|
| DIMENSIONS: |         | TOLERANCES UNLESS OTHERWISE SPECIFIED: |         | DWG: HOFFNER 13JUNE2014   |  | TE Connectivity |                           |
| mm          | 0 PLC ± | 1 PLC ±                                | 2 PLC ± | 3 PLC ±                   | 4 PLC ±                                | 5 PLC ±         | Harrisburg, PA 17105-3608 |
|             | ANGLES  | FINISH                                 |         | APVD: T. ELBIN 16JUNE2014 | NAME: Ocean Side Feed Applicator       | SIZE: A1        | CAGE CODE: 00779          |
| MATERIAL:   |         |  |         | PRODUCT SPEC              | APPLICATION SPEC                       | SCALE: 1:1      | DRAWING NO: C-2266335     |
|             |         |  |         | RESTRICTED TO:            | Customer Accessible Production Drawing | SHEET 2 OF 4    | REV C                     |

Table with columns: PART NUMBER, REVISION, DESCRIPTION, FEED TYPE, CONVERT TO, PART NUMBERS REQUIRED. Includes a diagram of the Pacific Version Terminator Interface Adapter.

APPLICATOR DATA table with columns: CRIMP SIZE, WIRE SIZE, INSUL SIZE, APPLICATOR INSTRUCTIONS.

Terminal Data: TE Terminal TE Crimp Specification. Includes wire strip length and insulation diameter range.

Terminal Data: TE Terminal TE Crimp Specification. Includes wire strip length and insulation diameter range.

Table with columns: WIRE SIZE, CRIMP HEIGHT mm [INCH], CRIMP HEIGHT REFERENCE SETTING.

- RECOMMENDED SPARE PARTS
GREASE BEARING SURFACES LIGHTLY
LUBRICATE DAILY PER THE APPLICATOR INSTRUCTION SHEET SUPPLIED WITH THE APPLICATOR.
APPLICATOR SPECIFIC DATA TO BE ENTERED INTO BLANK MEMORY CHIP AT ASSEMBLY...

\*WARNING
ON INSTALLATION, SET WIRE DISC, ITEM 40 TO LARGEST WIRE SIZE SETTING. USE OF SETTINGS BELOW MINIMUM REQUIRED CRIMP HEIGHT SETTING WILL CAUSE DAMAGE TO CRIMP TOOLING.

PACIFIC VERSION
Shown on sheets 3 of 4 & 4 of 4
(Atlantic version shown on sheets 1 of 4 & 2 of 4)

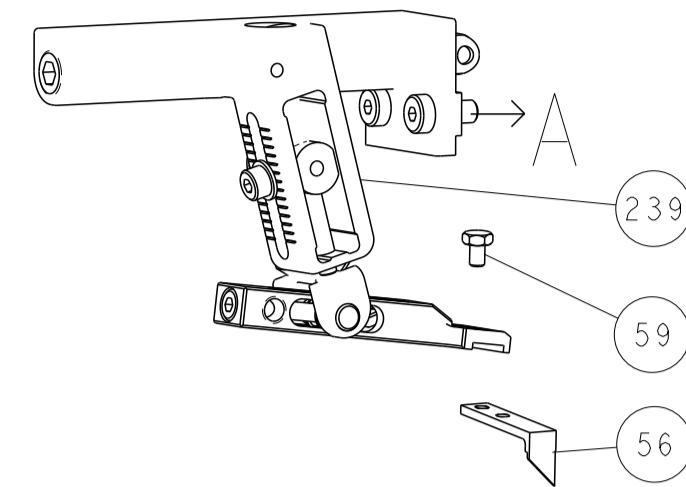
Table with columns: SET UP GAUGE, DIST, REVISIONS. Includes a small table with columns: P, LTM, DESCRIPTION, DATE, DWN, APVD.

Large table with columns: P, LTM, DESCRIPTION, DATE, DWN, APVD. Lists various components like FINE ADJUST HEAD ASM, PUSH ROD, AIR FEED, BUSHING, FLANGED, etc.

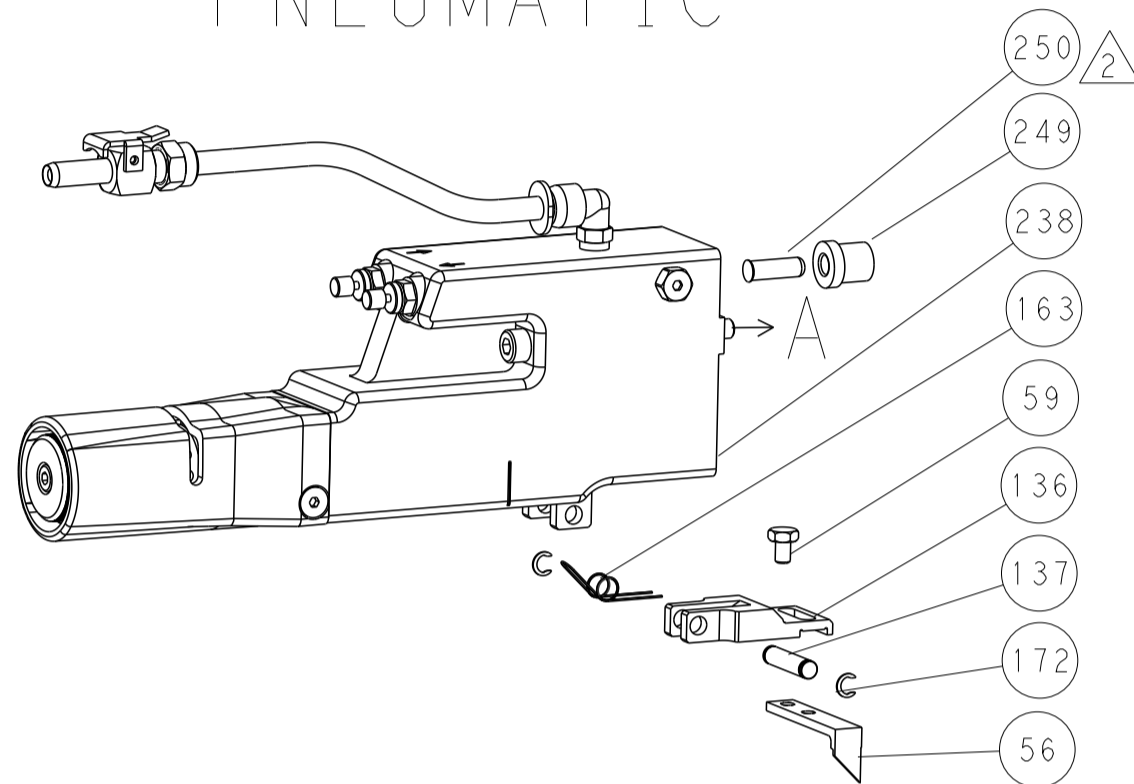
Technical drawing header/footer including dimensions, tolerances, material, weight, and customer information.

| LOC |    | DIST |     | REVISIONS   |      |     |      |
|-----|----|------|-----|-------------|------|-----|------|
| A   | 66 | P    | LTM | DESCRIPTION | DATE | OWN | APVD |
|     |    | -    |     | SEE SHEET 1 |      |     |      |

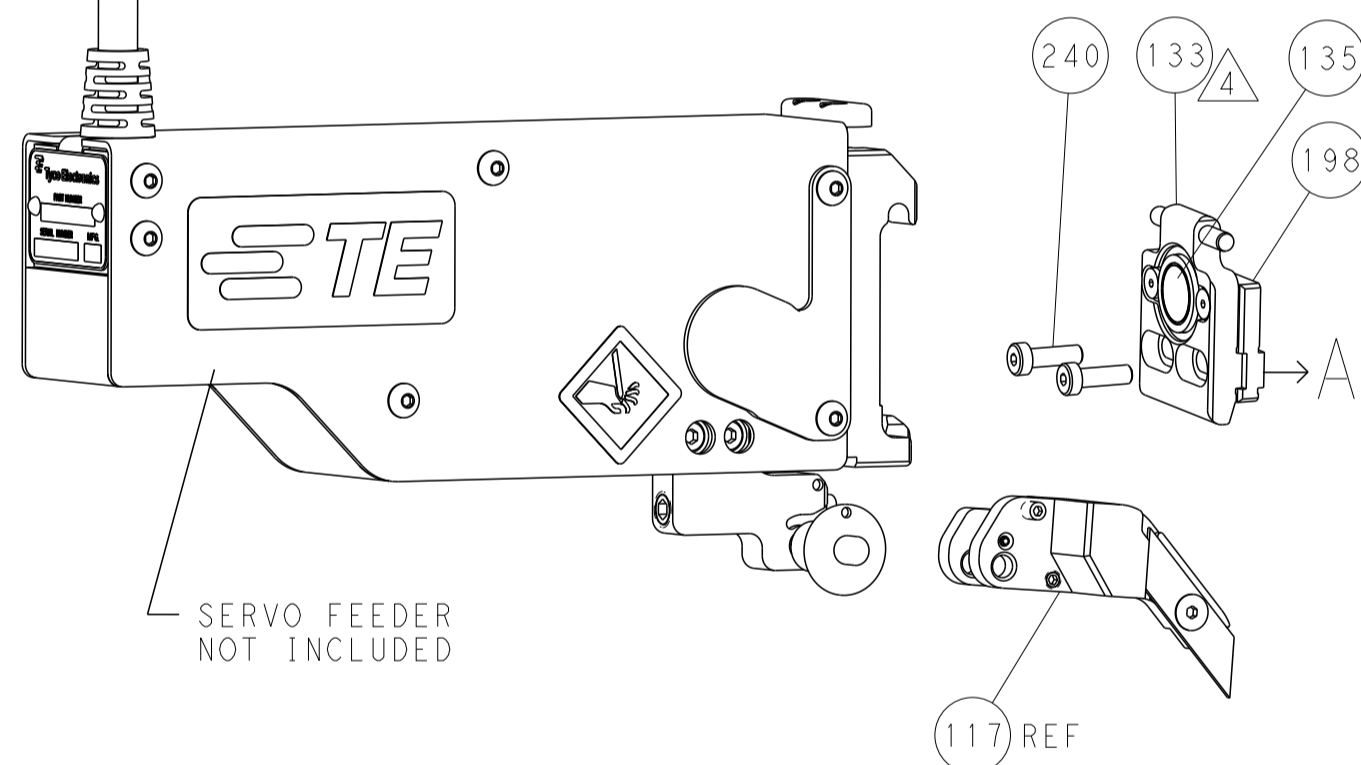
# FEED TYPE MECHANICAL



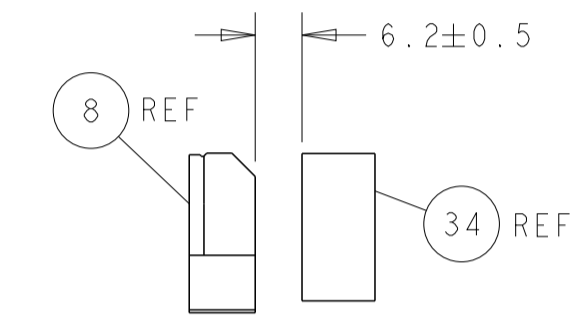
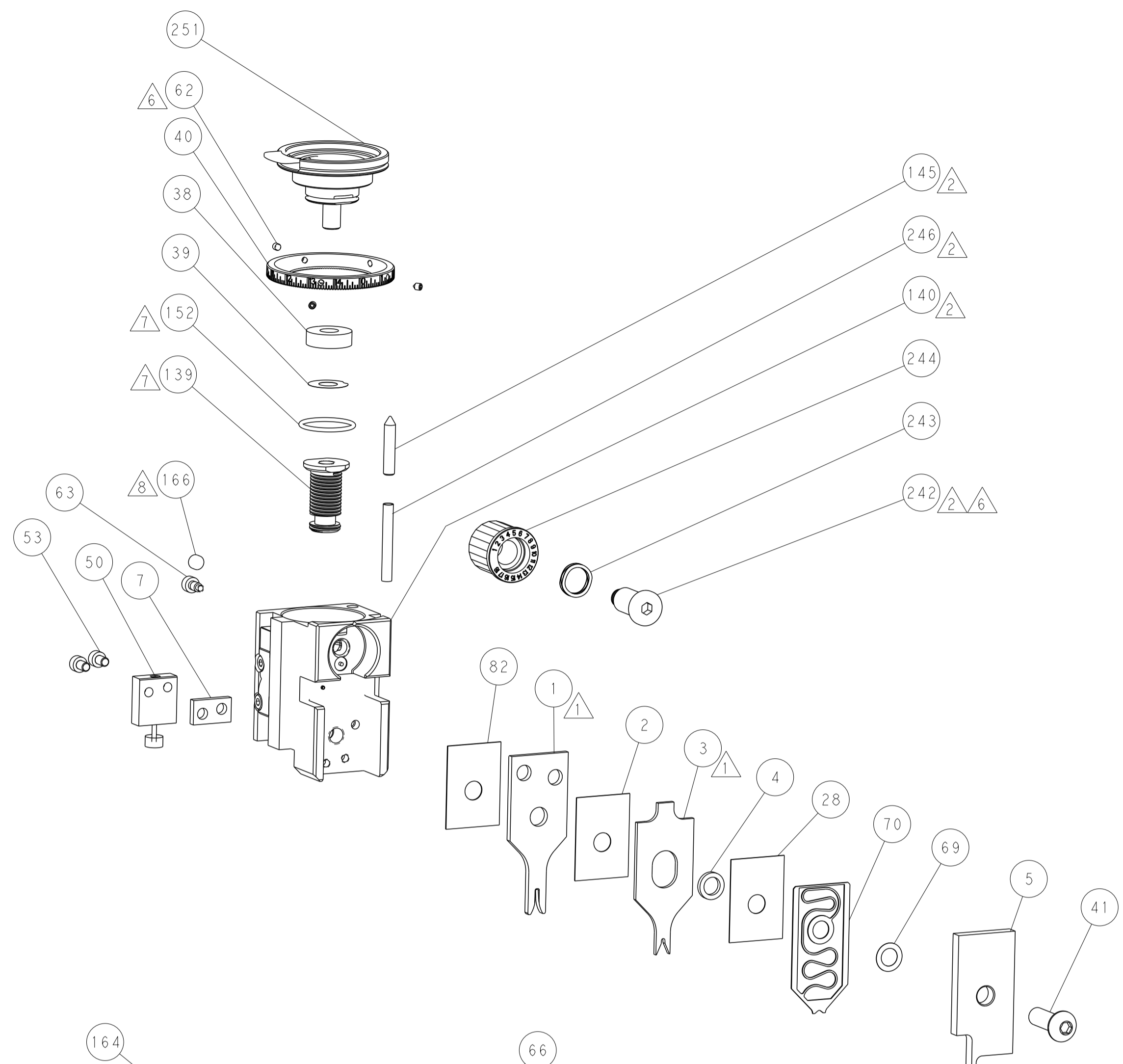
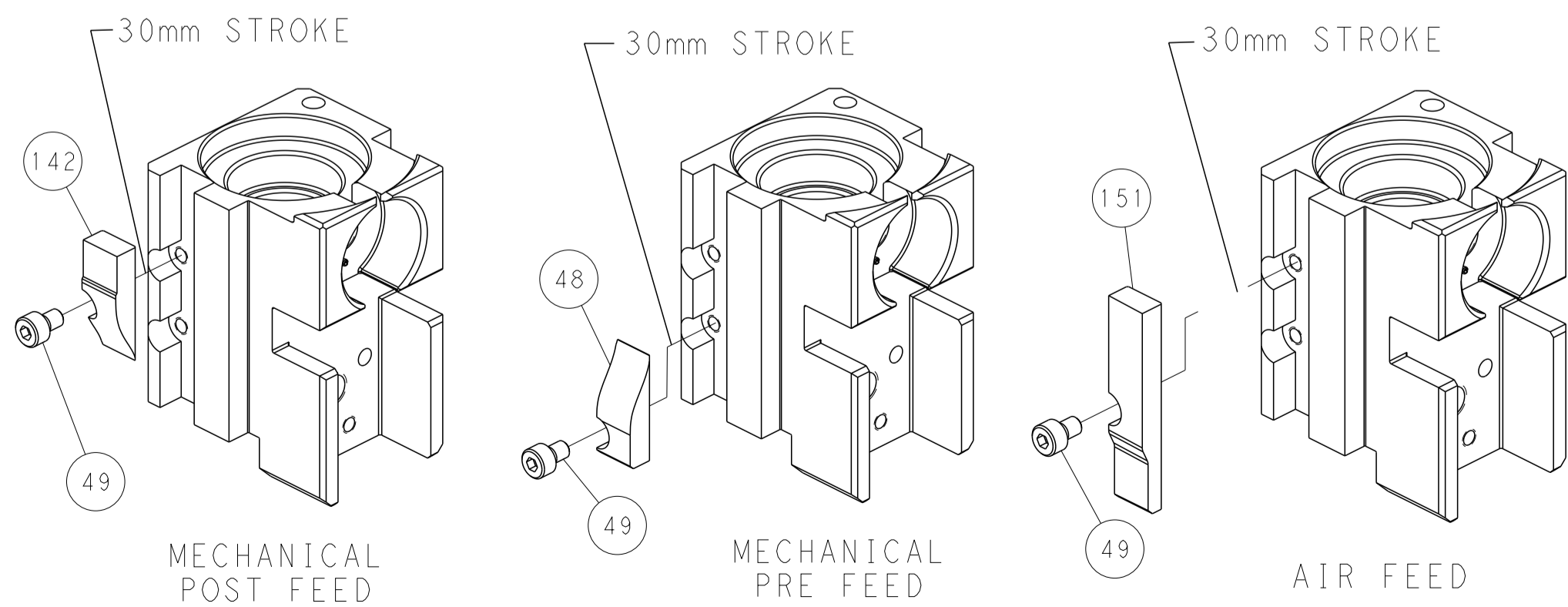
# PNEUMATIC



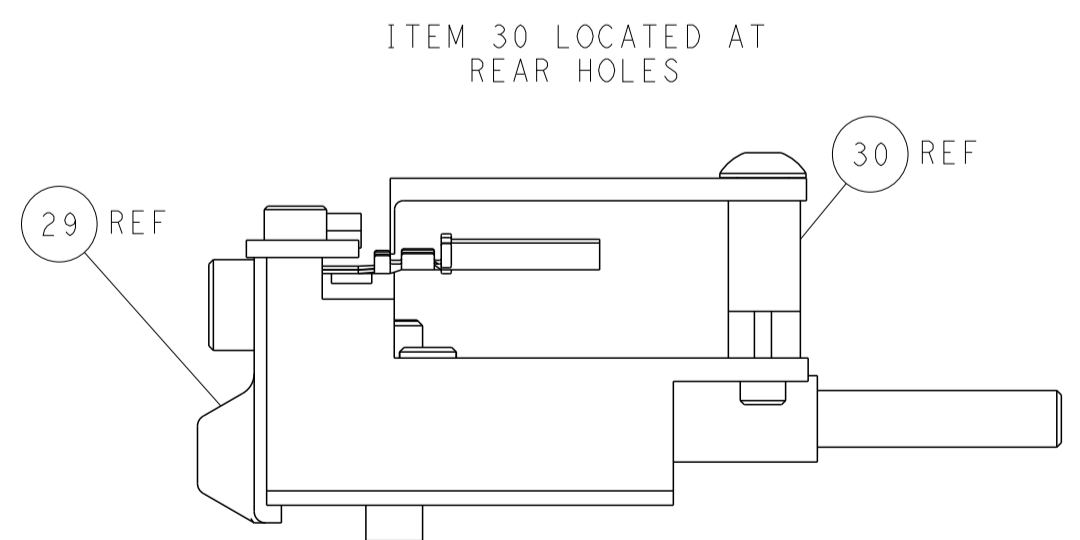
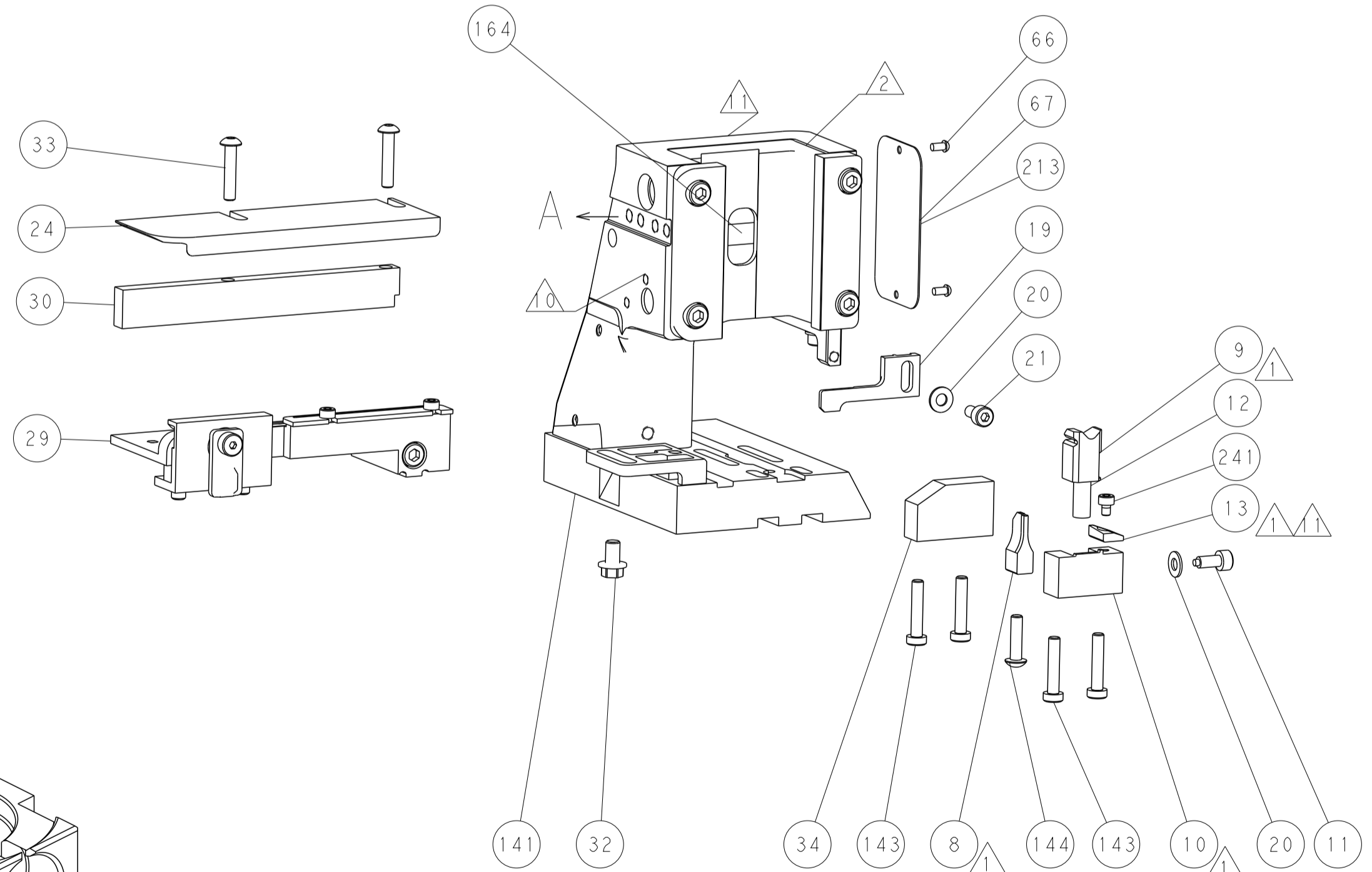
# SERVO LATCH PLATE



# CAM POSITIONS



TERMINAL SUPPORT LOCATION



FEED TRACK POSITION  
GUIDE BY INSULATION BARREL

**PACIFIC VERSION**  
 Shown on sheets 3 of 4 & 4 of 4  
 (Atlantic version shown on sheets 1 of 4 & 2 of 4)

|   |   |  |  |
|---|---|--|--|
| <small>THIS DRAWING IS UNPUBLISHED. RELEASED FOR PUBLICATION. ALL RIGHTS RESERVED. © 2014 BY TYCO ELECTRONICS CORPORATION. THIS DRAWING IS THE PROPERTY OF TYCO ELECTRONICS CORPORATION AND IS NOT TO BE REPRODUCED OR TRANSMITTED IN ANY FORM OR BY ANY MEANS, ELECTRONIC OR MECHANICAL, WITHOUT THE WRITTEN PERMISSION OF TYCO ELECTRONICS CORPORATION.</small> |   | DWN: HOFFNER 13JUNE2014<br>CHK: T.ELBIN 16JUNE2014<br>APVD: T.ELBIN 16JUNE2014   | TE Connectivity<br>Harrisburg, PA 17105-3608 |
| DIMENSIONS: mm<br>TOLERANCES UNLESS OTHERWISE SPECIFIED:<br>0 PLC ±<br>1 PLC ±<br>2 PLC ±<br>3 PLC ±<br>4 PLC ±<br>ANGLES FINISH  | TOLERANCES UNLESS OTHERWISE SPECIFIED:<br>±<br>±<br>±<br>±<br>± | NAME: Ocean Side Feed Applicator<br>APPLICATION SPEC: -<br>SIZE: A1<br>CAGE CODE: 00779<br>DRAWING NO: C-2266335<br>SCALE: 1:1 | RESTRICTED TO: -<br>SHEET: 4 OF 4<br>REV: C  |