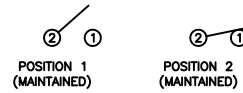


SCHEMATIC



SPECIFICATIONS

FUNCTION:
1P1T OFF-ON

RATINGS:
ANSI/UL 1054 and CAN/CSA C22.2 No. 55 (E194579):
20A 125VAC [cURus]
12A 250VAC [cURus]

EN 61058-1 (40017436):
10(4)A 250V~ 5E4 T125/55 [ENEC10, VDE]

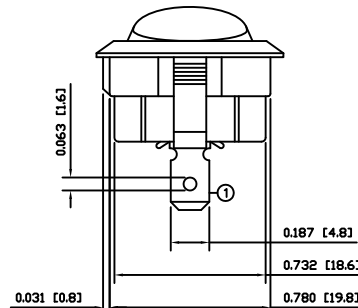
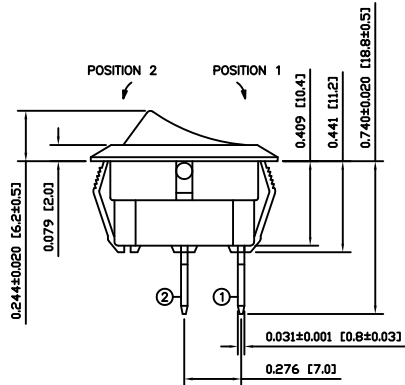
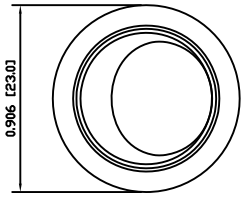
CONTACT RESISTANCE:
Initial: 20mΩ Max.

INSULATION RESISTANCE:
100MΩ at 500VDC

DIELECTRIC STRENGTH:
1,000VAC For 1 Minute

TEMPERATURE:
Operating: -20°C to 65°C [cURus]
Operating: -20°C to 125°C [ENEC10, VDE]

ELECTRICAL LIFE:
6,000 Cycles [cURus]
50,000 Cycles [ENEC10, VDE]



COLORS AND MARKINGS

BODY:
Black

ACTUATOR:
Black

MARKINGS:
None

MARKING COLOR:
None

MATERIALS

BODY:
Polyamide 6/6 (PA66), UL 94 V-2

ACTUATOR:
Polyamide 6/6 (PA66), UL 94 V-2

SPRING:
Steel

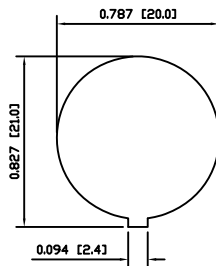
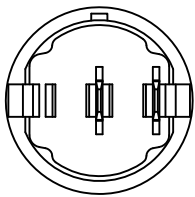
PLUNGER:
Steel

CONTACTS:
Silver Plated Copper

MOBILE CONTACT:
Silver Plated Copper

TERMINALS:
Silver Plated Brass

SUGGESTED PANEL CUTOUT



ACTUATOR	A	09/06/12	CAB
BODY	A	09/06/12	CAB
COLORS	A	09/06/12	CAB
MATERIALS	A	09/06/12	CAB
SPECIFICATIONS	A	09/06/12	CAB
REFERENCE	REV.	DATE	BY

THE INFORMATION CONTAINED IN THIS DOCUMENT IS PROPRIETARY TO E-SWITCH-LAMB INDUSTRIES AND IS NOT TO BE COPIED OR TRANSFERRED

A	INITIAL RELEASE	PCRD0051	09/06/12	CAB
REV.	DESCRIPTION	PCR	DATE	DRAWN BY

DIMENSIONS	
INCHES [MILLIMETERS]	
GENERAL TOLERANCES	
±0.008 [±0.2] / ±1°	
SCALE	PROJECTION
DRAWING NOT TO SCALE	1st Angle

RR511D1100		
DRAWING NUMBER	DATE	REVISION
14-RR511D1100	AUGUST 12, 2009	A