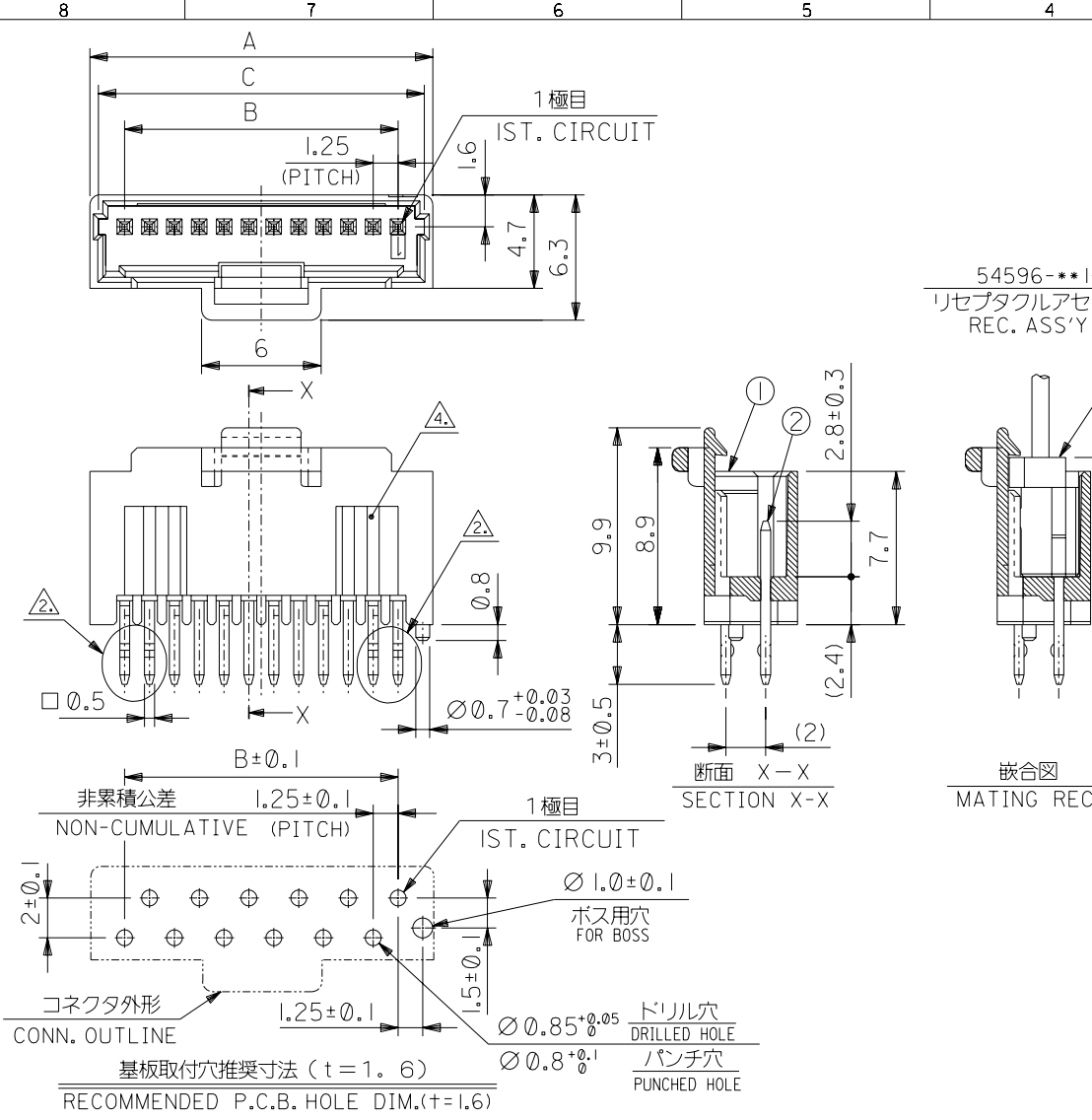
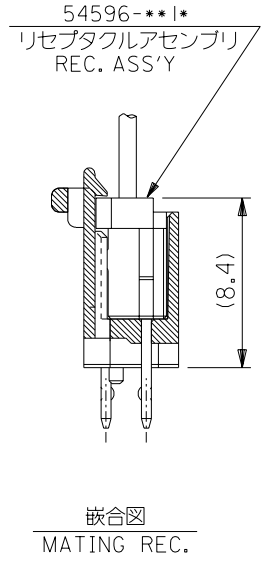


DWG. NO. SD-55447-012



番号 NO.	名称 NAME	原料 MATERIAL	数量 QTY	仕上げ FINISH
①	ウエハー WEFAR	ナイロン NYLON	I	UL94V-0
②	ピン PIN	黄銅 BRASS	N	全体錫メッキ PRE-TINNED

注) NOTES 1.原料および仕上げ:表参照
 MATERIAL AND FINISH : SEE CHART
 ②キソフは、両サイド4ピンに適用。
 TO BE APPLICABLE 4 PIN OF BOTH SIDE.
 ③製品番号 MATERIAL NO. 55447-***8*
 極数CIRCUIT SIZE (02 ~ 20)
 無鉛メッキ&ショートアームロック
 LEAD FREE&SHORT ARM LOCK
 色 COLOR 0:自然色 NATURAL
 ④側面の溝は、10極以上に適用。
 SIDE DITCHES MUST BE APPLICABLE OVER 10 CIRCUIT SIZE.



26.4	23.75	27.25	20	55447-208*
25.15	22.5	26	19	-198*
23.9	21.25	24.75	18	-188*
22.65	20	23.5	17	-178*
21.4	18.75	22.25	16	-168*
20.15	17.5	21	15	-158*
18.9	16.25	19.75	14	-148*
17.65	15	18.5	13	-138*
16.4	13.75	17.25	12	-128*
15.15	12.5	16	11	-118*
13.9	11.25	14.75	10	-108*
12.65	10	13.5	9	-098*
11.4	8.75	12.25	8	-088*
10.15	7.5	11	7	-078*
8.9	6.25	9.75	6	-068*
C	B	A	極数 CIRCUIT SIZE	③製品番号 MATERIAL NO.

無鉛
 LEAD FREE

DO NOT SCALE DRAWING

EC NO.	DRWN:	CHK:	APPR:
EC NO.	DRWN:	CHK:	APPR:
EC NO.	DRWN:	CHK:	APPR:
EC NO.	DRWN:	CHK:	APPR:
EC NO.	DRWN:	CHK:	APPR:
0	DRWN:	CHK:	APPR:

DESCRIPTION	MATERIAL 材料
SEE CHART	SEE CHART
FINISH 仕上げ	SEE CHART
WIRE RANGE 適用電線範囲	—
INS. RANGE 被覆外径	—

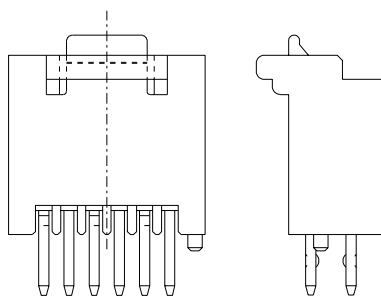
GENERAL TOLERANCES: (UNLESS SPECIFIED) 一般公差	SCALE 4-1	DESIGN UNITS <input checked="" type="checkbox"/> mm <input type="checkbox"/> INCH
10 UNDER 未満	±0.2	DRAWN BY & DATE N.YOSHIDA'03/02/07
10 OVER 30 UNDER 未満	±0.25	CHECKED BY & DATE Y. Ito
30 OVER 以上	±0.3	APPROVED BY & DATE Y. Ito
ANGLE 角度	±3°	CAD FILENAME 55447012.S01

DIMENSIONS:		THIRD ANGLE PROJECTION		SHT REV	
<input type="checkbox"/> mm	<input type="checkbox"/> INCH	<input type="checkbox"/> mm	<input checked="" type="checkbox"/> INCH	REVISION	DATE
TITLE: Mini MiII I-ROW WAFER ASS'Y (Sn) SHORT ARM LOCK TYPE					
MOLEX INCORPORATED					
MATERIAL NO.	DRAWING NO.	SHEET NO.		REV	
SEE CHART	SD-55447-012	1 OF 2		B	

THIS DRAWING CONTAINS INFORMATION THAT IS PROPRIETARY TO MOLEX INCORPORATED AND SHOULD NOT BE USED WITHOUT WRITTEN PERMISSION.

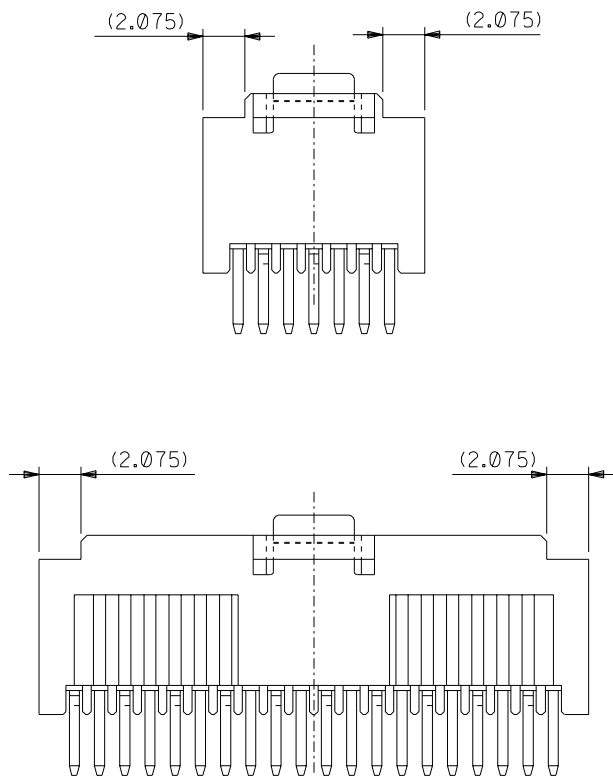
55447012.S01

DWG. NO. SD-55447-012



6極
6 CIRCUIT

6極のハウジング形状
SHAPE OF HS'G 6 CIRCUIT



7極
7 CIRCUIT

20極
20 CIRCUIT

7極~20極のハウジング形状
SHAPE OF HS'G FROM 7 TO 20 CIRCUIT

無鉛
LEAD FREE

DO NOT SCALE DRAWING

EC NO. DRWN: CHK: APPR:	EC NO. DRWN: CHK: APPR:	EC NO. DRWN: CHK: APPR:	EC NO. DRWN: CHK: APPR:	SEE SHEET 1 OF 2
EC NO. DRWN: CHK: APPR:	EC NO. DRWN: CHK: APPR:	EC NO. DRWN: CHK: APPR:	EC NO. DRWN: CHK: APPR:	SEE SHEET 1 OF 2
WIRE RANGE 適用電線範囲	—			
INS. RANGE 被覆外径	—			

MATERIAL 材料	SEE SHEET 1 OF 2
FINISH 仕上げ	SEE SHEET 1 OF 2
WIRE RANGE 適用電線範囲	—
INS. RANGE 被覆外径	—

GENERAL TOLERANCES: (UNLESS SPECIFIED) 一般公差	SCALE 4-1	DESIGN UNITS <input checked="" type="checkbox"/> mm <input type="checkbox"/> INCH
10 UNDER 未満	±0.2	DRAWN BY & DATE N.YOSHIDA'03/02/07
10 OVER 30 UNDER 以上 未満	±0.25	
30 OVER 以上	±0.3	
ANGLE 角度	±3°	CHECKED BY & DATE <i>Y. Ota</i>
		APPROVED BY & DATE <i>Y. Ota</i>
		CAD FILENAME 55447012.S02

THIRD ANGLE PROJECTION	TITLE: Mini MiII I-ROW WAFER ASS'Y (Sn) SHORT ARM LOCK TYPE
	MOLEX INCORPORATED
	MATERIAL NO. SEE CHART
	DRAWING NO. SD-55447-012
	SHEET NO. 2

DIMENSIONS: <input type="checkbox"/> mm <input type="checkbox"/> INCH <input checked="" type="checkbox"/> mm ONLY	SHT REVISE ON CAD ONLY
THIS DRAWING CONTAINS INFORMATION THAT IS PROPRIETARY TO MOLEX INCORPORATED AND SHOULD NOT BE USED WITHOUT WRITTEN PERMISSION.	
SIZE B	EN-02J(097) MXJ-54

55447012.S02