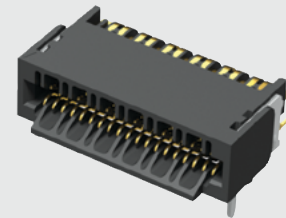




UCC8-010-1-H-S-1-A



UEC5, UCC8 SERIES

RUGGED MICRO FLYOVER SOCKET SYSTEM

SPECIFICATIONS

For complete specifications and recommended PCB layouts see www.samtec.com?UEC5

Insulator Material: Black LCP
Contact Material: BeCu
Plating: Au or Sn over 50 μm (1.27 μm) Ni
Current Rating: 1.8 A per pin (2 pins powered)
Operating Temp Range: -55° C to +125° C
RoHS Compliant: Yes

PROCESSING

Lead-Free Solderable: Yes
SMT Lead Coplanarity: (0.10 mm) .004" max

RECOGNITIONS

For complete scope of recognitions see www.samtec.com/quality



Note: Some lengths, styles and options are non-standard, non-returnable.

UEC5	NO. OF POSITIONS	DATA RATE	PLATING OPTION	D	RA	WELD TAB	OPTION
	-019 (Per Row)	-1 = Up to 16 Gbps -2 = 28 Gbps+	-H = 30 μm (0.76 μm) Gold on contact, Gold flash on tail			-1 = Through-hole	Leave blank for -2 Data Rate -A = Alignment Pin (Available with Data Rate -1 only)

EDGE RATE
CONTACT

UEC5-019-2-X-D-RA

Note: PCB footprints are not interchangeable for -1 and -2 data rate versions.

UEC5-019-1-X-D-RA-A

Patents: 8588562, 8588561 additional patents pending

SPECIFICATIONS

For complete specifications and recommended PCB layouts see www.samtec.com?UCC8

Insulator Material: Black LCP
Contact Material: BeCu
Weld Tab: Copper Alloy
Plating: Au or Sn over 50 μm (1.27 μm) Ni
Current Rating: 2.6 A per pin (1 pin powered)
Operating Temp Range: -55° C to +125° C
RoHS Compliant: Yes

PROCESSING

Lead-Free Solderable: Yes
SMT Lead Coplanarity: (0.10 mm) .004" max

RECOGNITIONS

For complete scope of recognitions see www.samtec.com/quality



Note: Some lengths, styles and options are non-standard, non-returnable.

UCC8	NO. OF POSITIONS	1	PLATING OPTION	S	WELD TAB	A
	-010		-H = 30 μm (0.76 μm) Gold on contact, Gold flash on tail		-1 = Through-hole	

UCC8-010-1-H-S-1-A

APPLICATION

ECUO

The UEC5 and UCC8 connectors were designed to work specifically with the FireFly™ flyover system. They were not designed for use with mating cards other than those used with FireFly™. Please see www.samtec.com/edgecard or contact the CustomerEngineeringSupport@samtec.com for other edge card options.

Patents: 8588562, 8588561 additional patents pending

Due to technical progress, all designs, specifications and components are subject to change without notice.