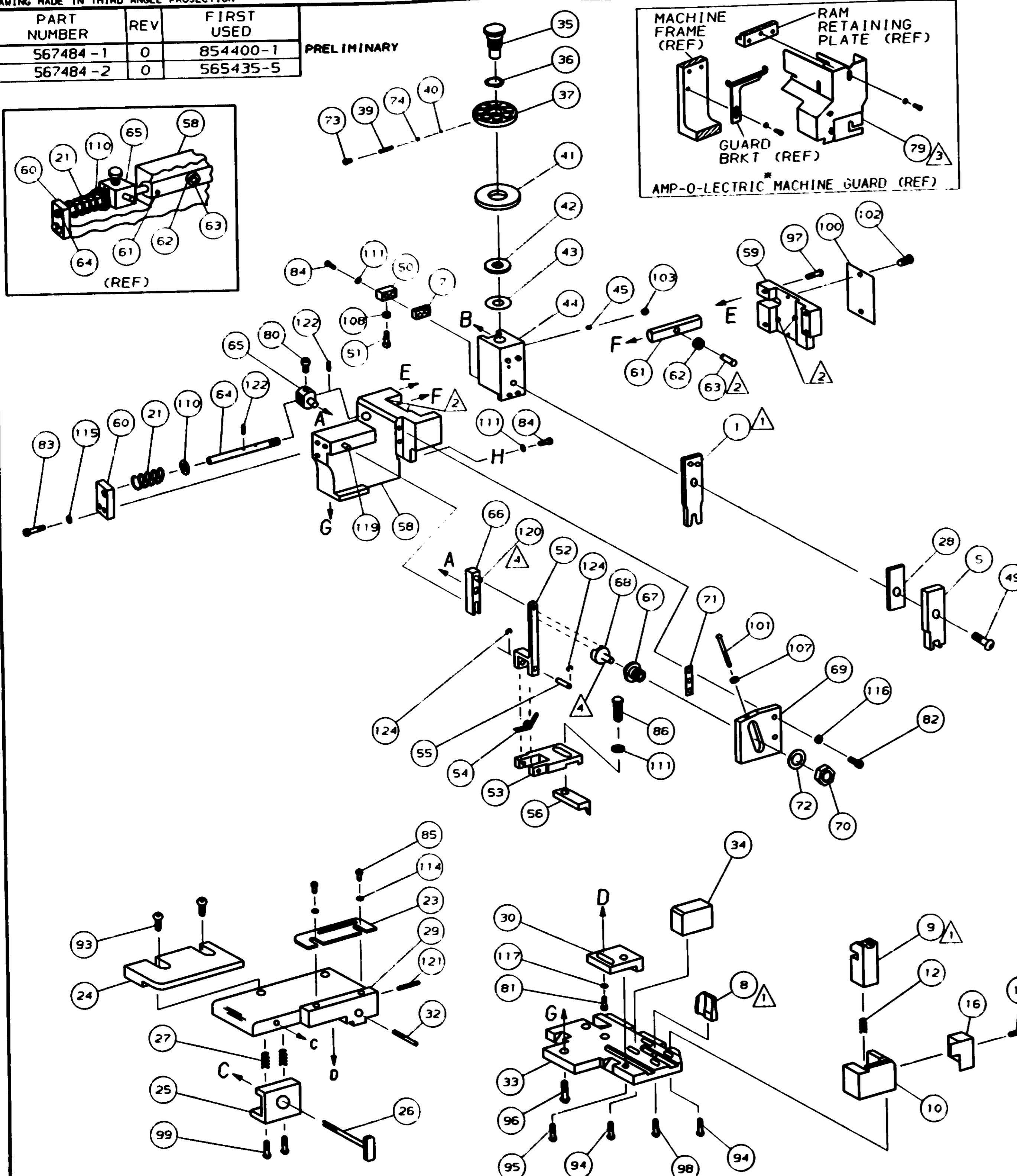
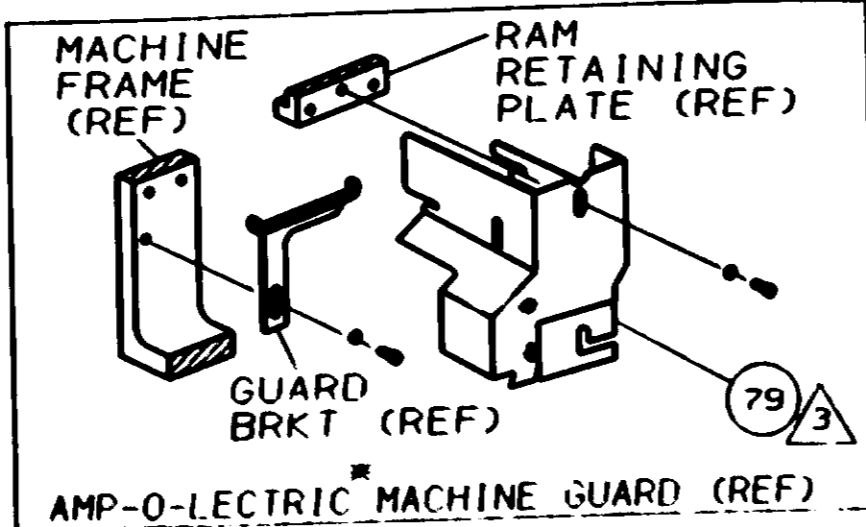
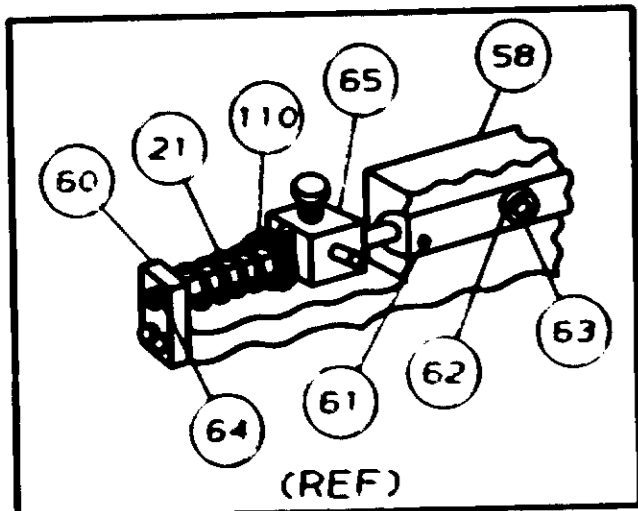


DRAWING MADE IN THIRD ANGLE PROJECTION

Table with 3 columns: PART NUMBER, REV, FIRST USED. Rows include 567484-1, 567484-2 and their respective revisions and first used dates.

PRELIMINARY

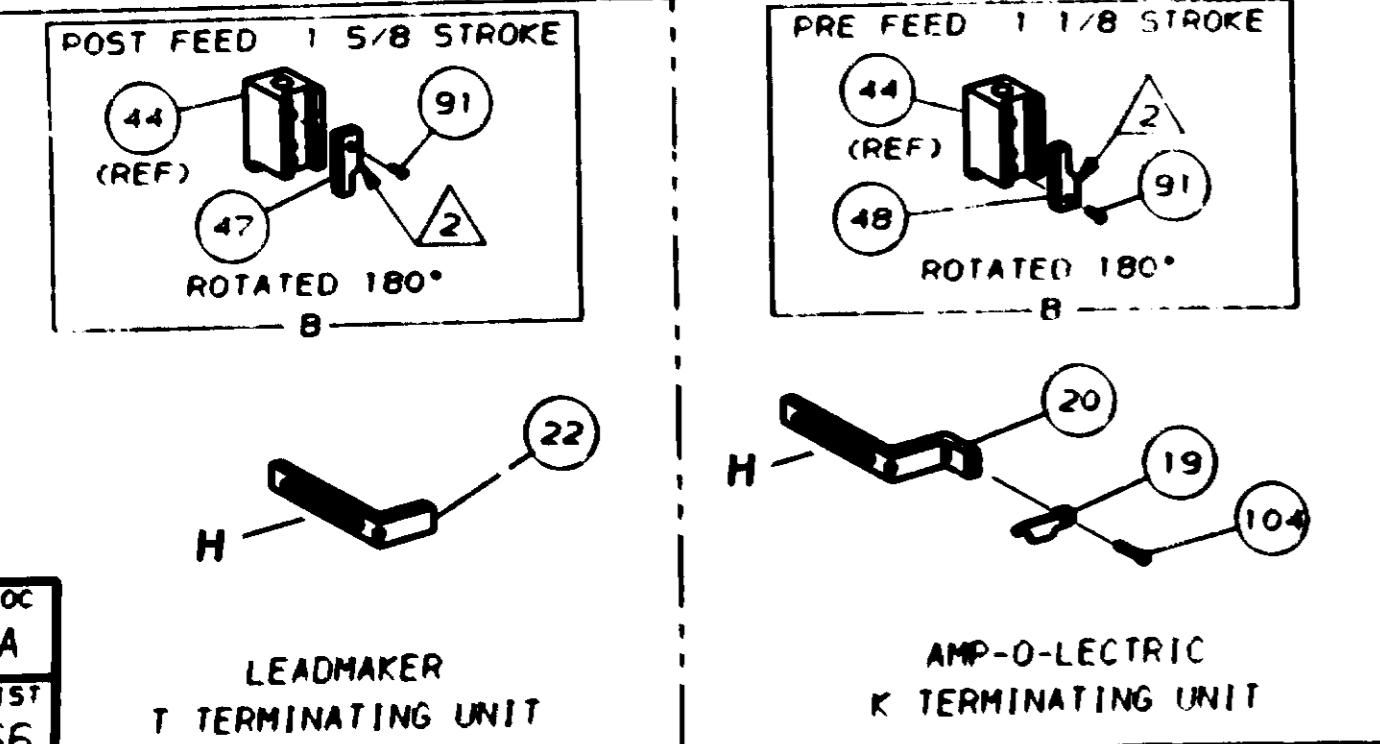


Terminal name and crimping data tables. Terminal name table includes miniature circular DIN and AMP-O-LETRIC. Crimping data table includes pad LTR, crimp height, wire size, and crimp size/type/range.

Large parts list table with columns for REF, QTY, and DESCRIPTION. It lists various components such as screws, washers, springs, and guides with their respective quantities and part numbers.

Large parts list table with columns for REF, QTY, and DESCRIPTION. It lists various components such as nuts, plates, shafts, bushings, levers, and guides with their respective quantities and part numbers.

- 1 RECOMMENDED SPARE PARTS.
2 GREASE LIGHTLY.
3 GUARD MUST BE IN PLACE WHEN OPERATING APPLICATOR IN AMP-O-LETRIC MACHINE.
4 LUBRICATE DAILY USING NO. 20 MACHINE OIL.
5. ITEMS WITH QTY OF REF SPECIFIED (EXCEPT ITEM 79) ARE USED ON ITEM 45.



THIS DRAWING IS A CONTROLLED DOCUMENT FOR AMP INCORPORATED. IT IS SUBJECT TO CHANGE AND THE CONTROL ENGINEERING DEPARTMENT SHOULD BE CONTACTED FOR THE LATEST REVISION.

THIS INFORMATION IS CONFIDENTIAL AND IS DISCLOSED TO YOU ON THE CONDITION THAT YOU WILL NOT DISCLOSE IT TO ANY OTHER PERSON WITHOUT WRITTEN AUTHORIZATION FROM AMP INCORPORATED, HARTFORD, PA.

LOC A DIST 66