

4

3

2

1

THIS DRAWING IS UNPUBLISHED. RELEASED FOR PUBLICATION
© COPYRIGHT ALL RIGHTS RESERVED.

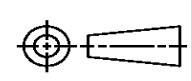
LOC	DIST	REVISIONS			
P	LTR	DESCRIPTION	DATE	DWN	APVD
	A1	ECR-14-003112	03MAR2014	GK	HMR

REPLACED BY OCEAN STYLE APPLICATOR PART NUMBER 2151132-1

FOR REPLACEMENT PARTS FOR APPLICATOR 1528874 REFER TO ADDITIONAL PAGE(S). SPARE PARTS KIT (IF LISTED) WILL REMAIN AVAILABLE.

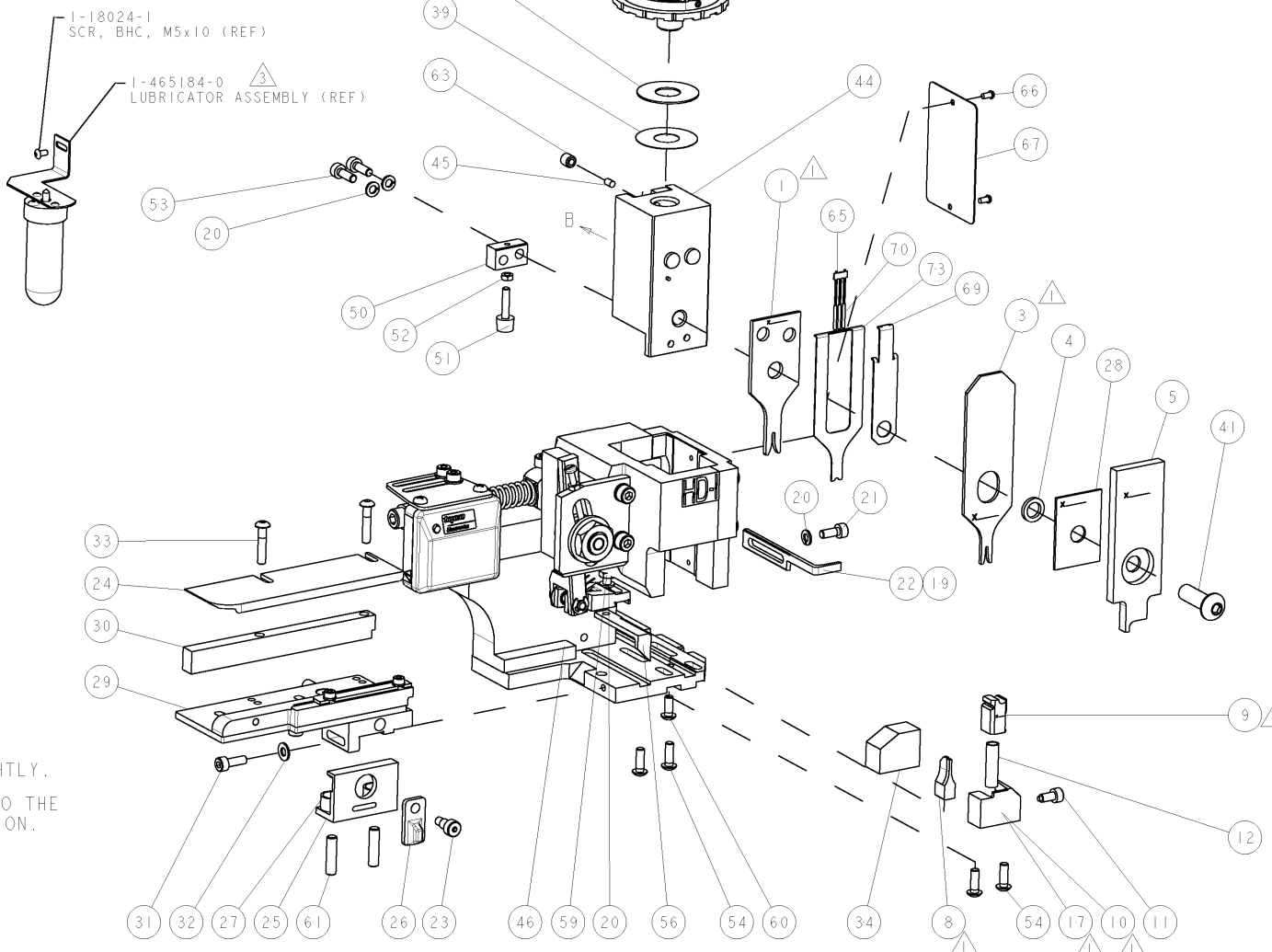
THE REPLACEMENT OCEAN STYLE APPLICATOR HAS THE SAME TERMINATOR/PRESS INTERFACE AS APPLICATOR 1528874

THIS DRAWING IS A CONTROLLED DOCUMENT.		DWN	GOPALAKRISHNA HV														
DIMENSIONS:		CHK	RAGHAVENDRA														
TOLERANCES UNLESS OTHERWISE SPECIFIED:		APVD	RAGHAVENDRA														
<table border="0"> <tr><td>0 PLC</td><td>±</td></tr> <tr><td>1 PLC</td><td>±</td></tr> <tr><td>2 PLC</td><td>±</td></tr> <tr><td>3 PLC</td><td>±</td></tr> <tr><td>4 PLC</td><td>±</td></tr> <tr><td>ANGLES</td><td>±</td></tr> </table>		0 PLC	±	1 PLC	±	2 PLC	±	3 PLC	±	4 PLC	±	ANGLES	±	PRODUCT SPEC	NAME		
0 PLC	±																
1 PLC	±																
2 PLC	±																
3 PLC	±																
4 PLC	±																
ANGLES	±																
MATERIAL		APPLICATION SPEC	FINE ADJUST SIDE FEED HDI APPLICATOR														
FINISH		WEIGHT	SIZE	CAGE CODE	DRAWING NO												
			A3		©- 1528874												
		CUSTOMER DRAWING	SCALE	SHEET 1 OF 2	REV A1												



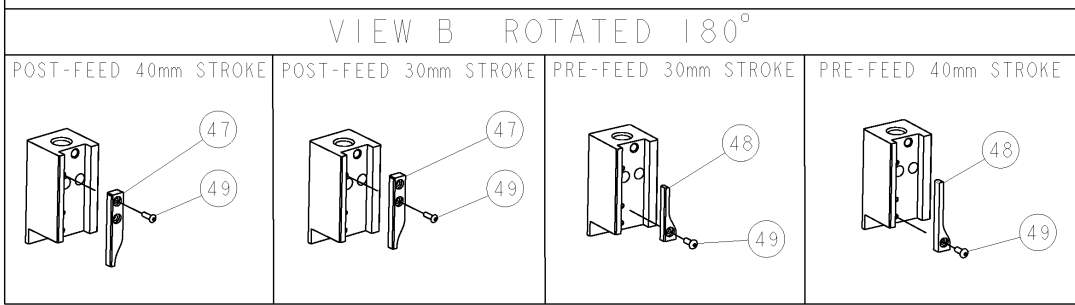
PART NUMBER	REV	TERMINATOR	FEED TYPE	DESCRIPTION
1528874-1	A	LEADMAKER	MECH POST FEED	CUTS CARRIER
1528874-2	A	BENCH	MECH PRE FEED	CUTS CARRIER
1528874-6	A	LEADMAKER	MECH POST FEED	CONTINUOUS CARRIER
7-1528874-1	A	LEADMAKER	MECH POST FEED	-1 AND SPARE PARTS
7-1528874-2	A	BENCH	MECH PRE FEED	-2 AND SPARE PARTS
7-1528874-6	A	LEADMAKER	MECH POST FEED	-6 AND SPARE PARTS
7-1528874-7	A	-	-	SPARE PARTS KIT

CRIMP DATA		TE TERMINAL	TE CRIMP SPECS
TERMINAL NAME: REC. CONTACT FOR MINI MULTILOCK			
CRIMP	SIZE	TYPE	RANGE
WIRE	1.27 [0.050 IN]	F	0.30-0.50mm ²
INSUL	1.40 [0.055 IN]	O	1.40-1.70 [0.055-0.067 IN]
WIRE STRIP LENGTH 3.00-3.50 [0.118-0.138 IN]		APPL INSTRUCTIONS 408-8322 & 408-8490	
TERMINAL APPL SPEC 114-5193		FEED 6.90 [0.272 IN]	
TERMINALS APPLIED			
917308	-	-	-
917309	-	-	-
-	-	-	-
-	-	-	-
-	-	-	-
WIRE SIZE	CRIMP HEIGHT	REF SETTING	
0.50mm ²	1.02 ± 0.05 [0.040 ± 0.002 IN]	B 5	
0.30mm ² or 0.35mm ²	0.90 ± 0.05 [0.035 ± 0.002 IN]	C 4	



- △ RECOMMENDED SPARE PARTS.
- 2. GREASE RAM, CAM, CAM FOLLOWER AND FEED ROD LIGHTLY.
- △ CERTAIN TERMINALS REQUIRE LUBRICATION. REFER TO THE APPLICATOR INSTRUCTION SHEET FOR MORE INFORMATION.
- 4. LUBRICATE DAILY PER THE APPLICATOR INSTRUCTION SHEET SUPPLIED WITH THE APPLICATOR.

*** WARNING**
ON INSTALLATION, SET WIRE DISC TO LARGEST WIRE SIZE SETTING. USE OF SETTINGS BELOW MIN. REQUIRED CRIMP HEIGHT SETTING WILL CAUSE DAMAGE TO CRIMP TOOLING.



ITEM NO	PART NO	DESCRIPTION
84		
83		
82		
81		
80		
79		
78		
77		
76		
75		
74		
-77	-76	-72
-71	-6	-2
-1		

SET UP GAGE
458637-3

REV	DATE	BY	CHKD	APPROV
A	11JAN2008	LJL	MC	

ITEM NO	PART NO	DESCRIPTION	ITEM NO
-	1490525-3	DEPRESSOR, WIRE	73
-	-	-	72
-	1338705-3	DOCUMENTATION PACKAGE	71
-	1-23147-4	SPRING, COMPRESSION	70
-	1490524-1	DEPRESSOR, SPACER	69
-	-	-	68
-	461264-5	PLATE, IDENTIFICATION	67
-	21017-2	SCREW, DRIVE	66
-	1424350-1	HOLDER, PIN, WIRED	65
-	-	-	64
-	3-18031-0	SCR, SET, CUP POINT M6 X 6.0	63
-	-	-	62
-	2-18032-5	SCR, SET, FLT POINT M5 X 20.0	61
-	18024-7	SCR, BTN SKT HD CAP (M4 X 10.0)	60
-	5-18022-2	SCR, HEX HD CAP M4 X 8.0	59
-	-	-	58
-	-	-	57
-	1338685-1	PAWL, FEED	56
-	-	-	55
-	18024-8	SCR, BTN SKT HD CAP (M4 X 12.0)	54
-	1-18023-2	SCR, SKT HD CAP M4 X 12.0	53
-	18030-1	NUT, HEX, REG M3	52
-	811242-5	BUMPER, HOLD DOWN	51
-	690753-2	SPACER, TONKER	50
-	18024-3	SCR, BTN SKT HD CAP (M3 X 10.0)	49
-	1338675-1	CAM, UNIVERSAL PRE FEED	48
-	1338676-1	CAM, UNIVERSAL POST-FEED	47
-	1320999-3	APPLICATOR SUBASSEMBLY, HDI	46
-	690191-1	PLUG, NYLON	45
-	1338660-5	RAM	44
-	-	-	43
-	-	-	42
-	2-18024-6	SCR, BTN SKT HD CAP (M8 X 25.0)	41
-	-	-	40
-	690125-1	SHIM SUB-ASSY	39
-	469367-8	SHIM	38
-	879103-3	FINE ADJUST HEAD ASSEMBLY	37
-	-	-	36
-	-	-	35
-	1320934-5	SUPPORT, TERMINAL	34
-	1-18024-0	SCR, BTN SKT HD CAP (M4 X 20.0)	33
-	18027-2	WASHER, FLAT, REG M4	32
-	1-18023-2	SCR, SKT HD CAP M4 X 12.0	31
-	1320908-4	SPACER, STRIP GUIDE	30
-	1633073-1	STRIP GUIDE ASSEMBLY	29
-	1-455888-0	SPACER, CRIMPER	28
-	1-22284-0	SPRING, COMPRESSION	27
-	356835-1	LEVER, DRAG RELEASE	26
-	240792-1	DRAG, TERMINAL	25
-	1320928-1	PLATE, STRIP GUIDE	24
-	980371-4	SCR, SKT HD SHLDR 5.0 DIA X 6.0	23
-	690472-2	STRIPPER	22
-	1-18023-1	SCR, SKT HD CAP M4 X 10.0	21
-	18025-2	WASHER, SPRG LOCK, REG M4	20
-	690472-1	STRIPPER	19
-	-	-	18
-	1338684-1	SHEAR HOLDER, FRONT	17
-	-	-	16
-	-	-	15
-	-	-	14
-	-	-	13
-	3-22280-3	SPRING, COMPRESSION	12
-	356885-4	STOP, SHEAR	11
-	1320921-1	SHEAR HOLDER, FRONT, CUT	10
-	462006-1	FLOATING SHEAR, FRONT	9
-	1-1333225-4	ANVIL, COMBINATION	8
-	-	-	7
-	-	-	6
-	3-455889-6	DEPRESSOR, SHEAR	5
-	238011-6	BLOCK, CRIMPER SPACER	4
-	3-683454-4	CRIMPER, INSULATION O	3
-	-	-	2
-	6-568176-8	CRIMPER, WIRE	1

REV	DATE	BY	CHKD	APPROV
A	06DEC2007	M. CLIFFORD		

DIMENSIONS: mm [IN] TOLERANCES UNLESS OTHERWISE SPECIFIED:
 0 PLC ±
 1 PLC ±
 2 PLC ±
 3 PLC ±
 4 PLC ±
 ANGLES ±

MATERIAL: FINISH: WEIGHT: APPLICATION SPEC: See Table

CUSTOMER DRAWING: SCALE: 3:5 SHEET 1 OF 1 REV A