

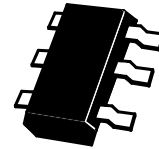
# ZXTD6717E6

## COMPLEMENTARY NPN/PNP LOW SATURATION DUAL TRANSISTORS

### SUMMARY

**NPN:**  $V_{CE0}=15V$ ;  $V_{CE(sat)}=0.1V$ ;  $I_C=1.5A$ ;

**PNP:**  $V_{CE0}=-12V$ ;  $V_{CE(sat)}=-0.175V$ ;  $I_C=-1.25A$ ;



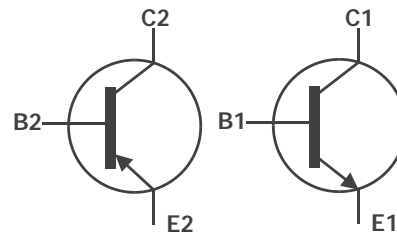
SOT23-6

### DESCRIPTION

This new combination device comprises a complementary NPN and PNP low saturation transistor housed in the SOT23-6 package. Users benefit from very efficient performance combining a high current operation, exceptionally low  $V_{CE(sat)}$  and high  $H_{FE}$  resulting in extremely low on state losses. This dual transistor is ideal for use in a variety of efficient driving functions including motors, lamps, relays and solenoids and will also benefit circuits requiring high output current switching.

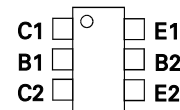
### FEATURES

- Low Saturation Voltage
- $R_{CE(sat)}$  values    NPN =135m $\Omega$  at 1.5A  
                              -    PNP =150m $\Omega$  at 1.25A
- $h_{FE}$  min 200 at 1A
- $I_C=1.5A$  Continuous (NPN), 1.25A (PNP)
- SOT23-6 package with  $P_D = 1.1W$



### APPLICATIONS

- Various driving functions
  - Lamps
  - Motors
  - Relays and solenoids
- High output current switches



Top View

### ORDERING INFORMATION

DEVICE	REEL SIZE (inches)	TAPE WIDTH (mm)	QUANTITY PER REEL
ZXTD6717E6TA	7	8mm embossed	3000 units
ZXTD6717E6TC	13	8mm embossed	10000 units

### DEVICE MARKING

6717

# ZXTD6717E6

## ABSOLUTE MAXIMUM RATINGS.

PARAMETER	SYMBOL	LIMIT NPN	LIMIT PNP	UNIT
Collector-Base Voltage	$V_{CBO}$	15	-12	V
Collector-Emitter Voltage	$V_{CEO}$	15	-12	V
Emitter-Base Voltage	$V_{EBO}$	5	-5	V
Peak Pulse Current	$I_{CM}$	5	-3	A
Continuous Collector Current	$I_C$	1.5	-1.25	A
Base Current	$I_B$	200	-200	mA
Power Dissipation at $T_A=25^\circ\text{C}$ (a) Linear Derating Factor	$P_D$	1.1 8.8	1.1 8.8	W mW/ $^\circ\text{C}$
Power Dissipation at $T_A=25^\circ\text{C}$ (b) Linear Derating Factor	$P_D$	1.7 13.6	1.7 13.6	W mW/ $^\circ\text{C}$
Operating and Storage Temperature Range	$T_J:T_{stg}$	-55 to +150	-55 to +150	$^\circ\text{C}$

## THERMAL RESISTANCE

PARAMETER	SYMBOL	VALUE	UNIT
Junction to Ambient (a)	$R_{\theta JA}$	125	$^\circ\text{C}/\text{W}$
Junction to Ambient (b)	$R_{\theta JA}$	45	$^\circ\text{C}/\text{W}$

### NOTES

(a) For a device surface mounted on 25mm x 25mm FR4 PCB with high coverage of single sided 1oz copper, in still air conditions

(b) For a device surface mounted on FR4 PCB measured at  $t \leq 5$  secs.

## ZXTD6717E6

### NPN TRANSISTOR

#### ELECTRICAL CHARACTERISTICS (at $T_{amb} = 25^{\circ}\text{C}$ unless otherwise stated).

PARAMETER	SYMBOL	MIN.	TYP.	MAX.	UNIT	CONDITIONS.
Collector-Base Breakdown Voltage	$V_{(BR)CBO}$	15			V	$I_C=100\mu\text{A}$
Collector-Emitter Breakdown Voltage	$V_{(BR)CEO}$	15			V	$I_C=10\text{mA}^*$
Emitter-Base Breakdown Voltage	$V_{(BR)EBO}$	5			V	$I_E=100\mu\text{A}$
Collector Cut-Off Current	$I_{CBO}$			10	nA	$V_{CB}=10\text{V}$
Emitter Cut-Off Current	$I_{EBO}$			10	nA	$V_{EB}=4\text{V}$
Collector Emitter Cut-Off Current	$I_{CES}$			10	nA	$V_{CES}=10\text{V}$
Collector-Emitter Saturation Voltage	$V_{CE(sat)}$		16.5 40 75 150 205	20 55 100 200 245	mV mV mV mV mV	$I_C=100\text{mA}, I_B=10\text{mA}^*$ $I_C=250\text{mA}, I_B=10\text{mA}^*$ $I_C=500\text{mA}, I_B=10\text{mA}^*$ $I_C=1\text{A}, I_B=10\text{mA}^*$ $I_C=1.5\text{A}, I_B=20\text{mA}^*$
Base-Emitter Saturation Voltage	$V_{BE(sat)}$		0.93	1.1	V	$I_C=1.5\text{A}, I_B=20\text{mA}^*$
Base-Emitter Turn-On Voltage	$V_{BE(on)}$		0.865	1.1	V	$I_C=1.5\text{A}, V_{CE}=2\text{V}^*$
Static Forward Current Transfer Ratio	$h_{FE}$	200 300 250 200 75 30	420 450 390 300 150 75			$I_C=10\text{mA}, V_{CE}=2\text{V}^*$ $I_C=100\text{mA}, V_{CE}=2\text{V}^*$ $I_C=500\text{mA}, V_{CE}=2\text{V}^*$ $I_C=1\text{A}, V_{CE}=2\text{V}^*$ $I_C=3\text{A}, V_{CE}=2\text{V}^*$ $I_C=5\text{A}, V_{CE}=2\text{V}^*$
Transition Frequency	$f_T$		180		MHz	$I_C=50\text{mA}, V_{CE}=10\text{V}$ $f=100\text{MHz}$
Output Capacitance	$C_{obo}$		15		pF	$V_{CB}=10\text{V}, f=1\text{MHz}$
Turn-On Time	$t_{(on)}$		50		ns	$I_C=1\text{A}, V_{CC}=10\text{V}$
Turn-Off Time	$t_{(off)}$		250		ns	$I_{B1}=I_{B2}=100\text{mA}$

\*Measured under pulsed conditions. Pulse width=300 $\mu\text{s}$ . Duty cycle  $\leq 2\%$

# ZXTD6717E6

## PNP TRANSISTOR

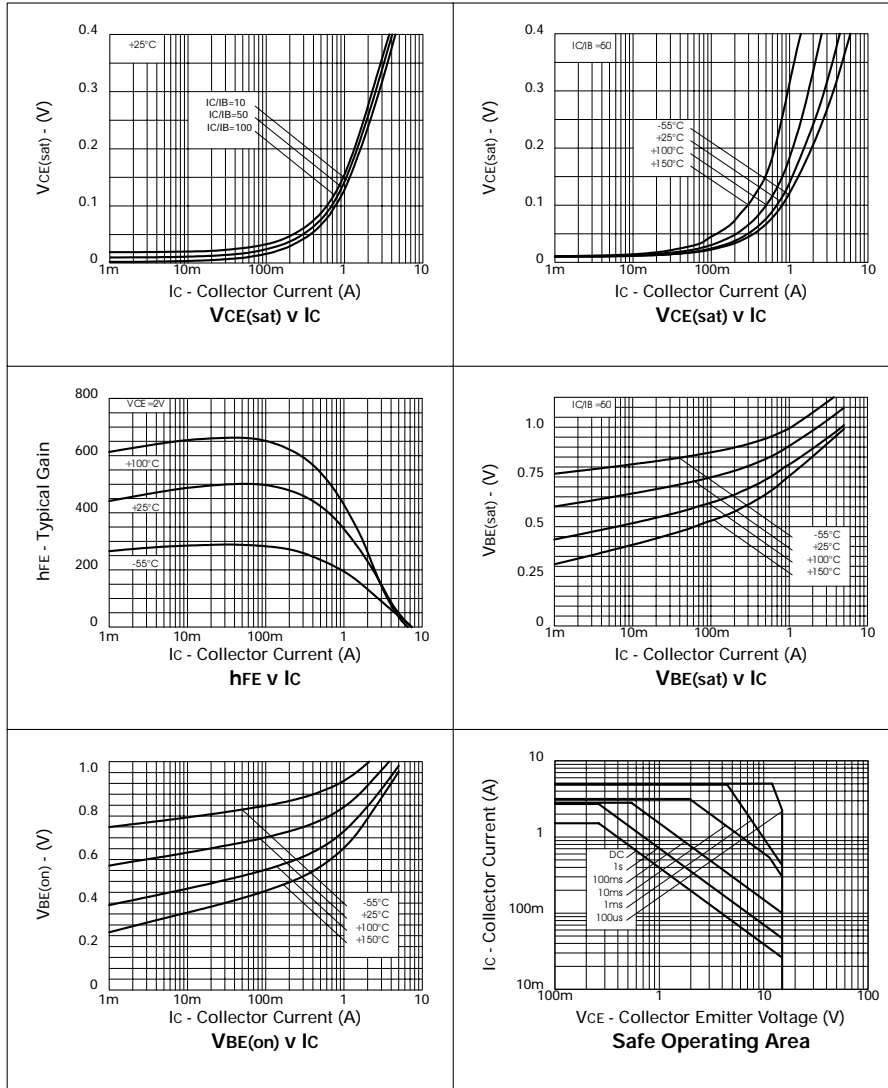
### ELECTRICAL CHARACTERISTICS (at $T_{amb} = 25^{\circ}\text{C}$ unless otherwise stated).

PARAMETER	SYMBOL	MIN.	TYP.	MAX.	UNIT	CONDITIONS.
Collector-Base Breakdown Voltage	$V_{(BR)CBO}$	-12			V	$I_C = -100\mu\text{A}$
Collector-Emitter Breakdown Voltage	$V_{(BR)CEO}$	-12			V	$I_C = -10\text{mA}^*$
Emitter-Base Breakdown Voltage	$V_{(BR)EBO}$	-5			V	$I_E = -100\mu\text{A}$
Collector Cut-Off Current	$I_{CBO}$			-10	nA	$V_{CB} = -10\text{V}$
Emitter Cut-Off Current	$I_{EBO}$			-10	nA	$V_{EB} = -4\text{V}$
Collector Emitter Cut-Off Current	$I_{CES}$			-10	nA	$V_{CES} = -10\text{V}$
Collector-Emitter Saturation Voltage	$V_{CE(sat)}$		-25 -55 -110 -160 -185	-40 -100 -175 -215 -240	mV mV mV mV mV	$I_C = -100\text{mA}, I_B = -10\text{mA}^*$ $I_C = -250\text{mA}, I_B = -10\text{mA}^*$ $I_C = -500\text{mA}, I_B = -10\text{mA}^*$ $I_C = -1\text{A}, I_B = -50\text{mA}^*$ $I_C = -1.25\text{A}, I_B = -100\text{mA}^*$
Base-Emitter Saturation Voltage	$V_{BE(sat)}$		-0.99	-1.10	V	$I_C = -1.25\text{A}, I_B = -100\text{mA}^*$
Base-Emitter Turn-On Voltage	$V_{BE(on)}$		-0.85	-1.0	V	$I_C = -1.25\text{A}, V_{CE} = -2\text{V}^*$
Static Forward Current Transfer Ratio	$h_{FE}$	300 300 200 125 75 30	490 450 340 250 140 80			$I_C = -10\text{mA}, V_{CE} = -2\text{V}^*$ $I_C = -100\text{mA}, V_{CE} = -2\text{V}^*$ $I_C = -500\text{mA}, V_{CE} = -2\text{V}^*$ $I_C = -1.25\text{A}, V_{CE} = -2\text{V}^*$ $I_C = -2\text{A}, V_{CE} = -2\text{V}^*$ $I_C = -3\text{A}, V_{CE} = -2\text{V}^*$
Transition Frequency	$f_T$		220		MHz	$I_C = -50\text{mA}, V_{CE} = -10\text{V}$ $f = 100\text{MHz}$
Output Capacitance	$C_{obo}$		15		pF	$V_{CB} = -10\text{V}, f = 1\text{MHz}$
Turn-On Time	$t_{(on)}$		50		ns	$I_C = -1\text{A}, V_{CC} = -10\text{V}$
Turn-Off Time	$t_{(off)}$		135		ns	$I_{B1} = I_{B2} = -100\text{mA}$

\*Measured under pulsed conditions. Pulse width=300 $\mu\text{s}$ . Duty cycle  $\leq 2\%$

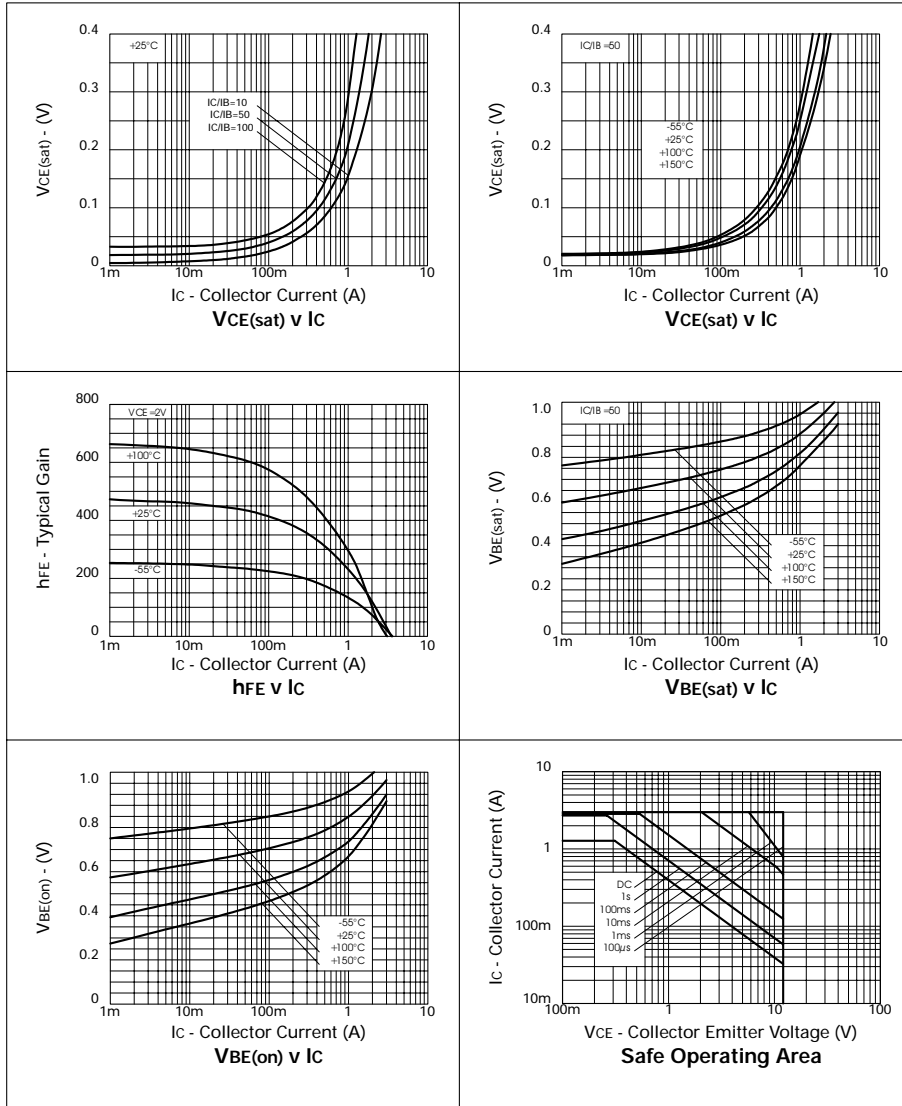
# ZXTD6717E6

## NPN TYPICAL CHARACTERISTICS



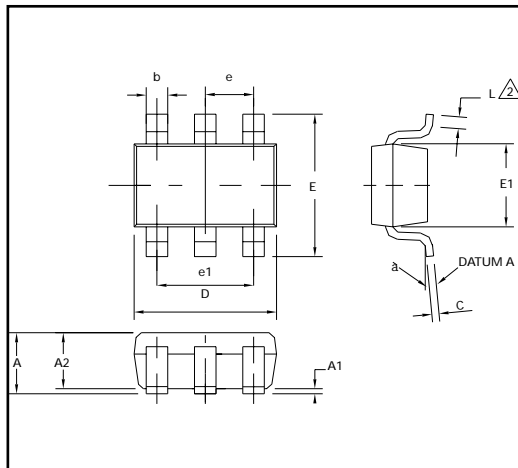
# ZXTD6717E6

## PNP TYPICAL CHARACTERISTICS

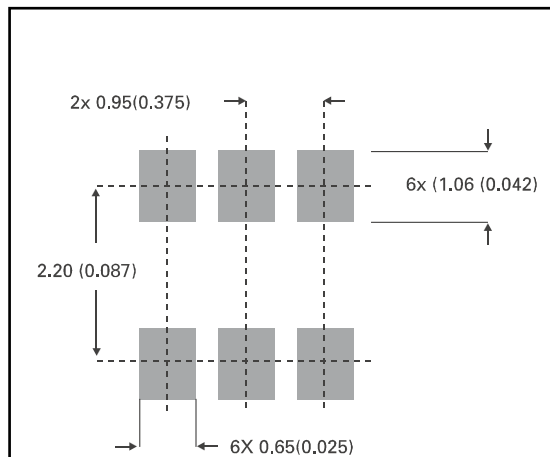


# ZXTD6717E6

## PACKAGE DIMENSIONS



## PAD LAYOUT DETAILS



DIM	Millimetres		Inches	
	Min	Max	Min	Max
A	0.90	1.45	0.35	0.057
A1	0.00	0.15	0	0.006
A2	0.90	1.30	0.035	0.051
b	0.35	0.50	0.014	0.019
C	0.09	0.20	0.0035	0.008
D	2.80	3.00	0.110	0.118
E	2.60	3.00	0.102	0.118
E1	1.50	1.75	0.059	0.069
L	0.10	0.60	0.004	0.002
e	0.95 REF		0.037 REF	
e1	1.90 REF		0.074 REF	
L	0°	10°	0°	10°



Zetex plc.  
Fields New Road, Chadderton, Oldham, OL9-8NP, United Kingdom.  
Telephone: (44)161 622 4422 (Sales), (44)161 622 4444 (General Enquiries)  
Fax: (44)161 622 4420

Zetex GmbH  
Streitfeldstraße 19  
D-81673 München  
Germany  
Telefon: (49) 89 45 49 49 0  
Fax: (49) 89 45 49 49 49

Zetex Inc.  
47 Mall Drive, Unit 4  
Commack NY 11725  
USA  
Telephone: (631) 543-7100  
Fax: (631) 864-7630

Zetex (Asia) Ltd.  
3701-04 Metroplaza, Tower 1  
Hing Fong Road,  
Kwai Fong, Hong Kong  
Telephone: (852) 26100 611  
Fax: (852) 24250 494

These are supported by  
agents and distributors in  
major countries world-wide  
© Zetex plc 2001

[www.zetex.com](http://www.zetex.com)

This publication is issued to provide outline information only which (unless agreed by the Company in writing) may not be used, applied or reproduced for any purpose or form part of any order or contract or be regarded as a representation relating to the products or services concerned. The Company reserves the right to alter without notice the specification, design, price or conditions of supply of any product or service.

ISSUE 2 - JULY 2001