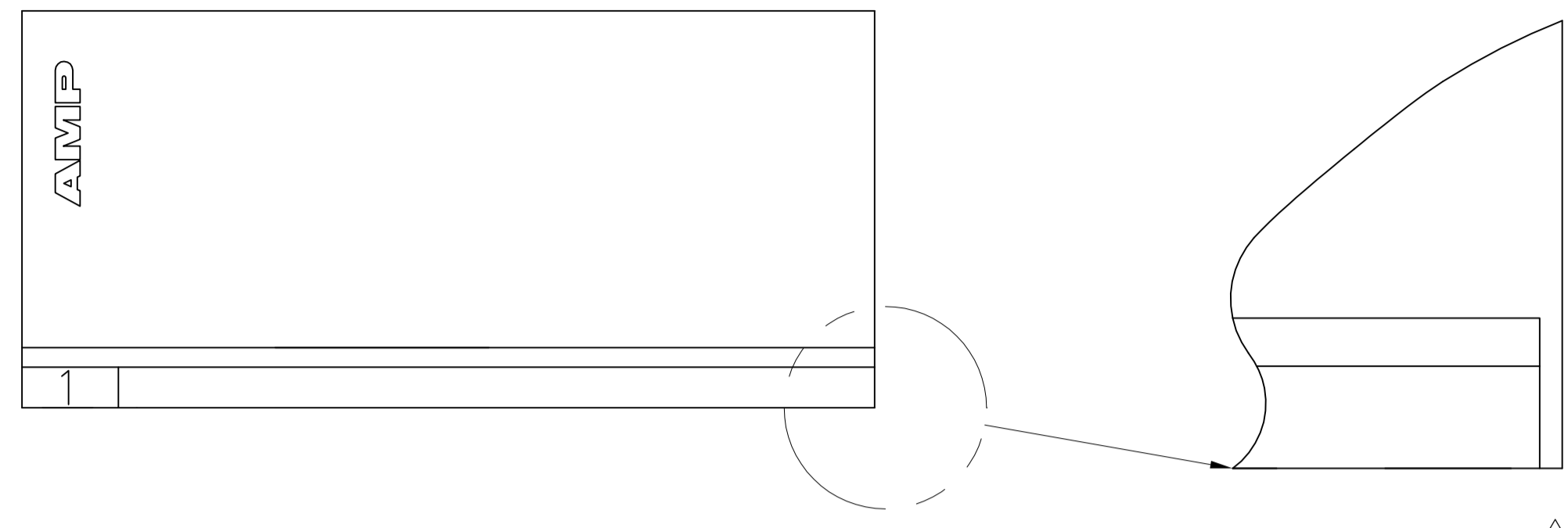
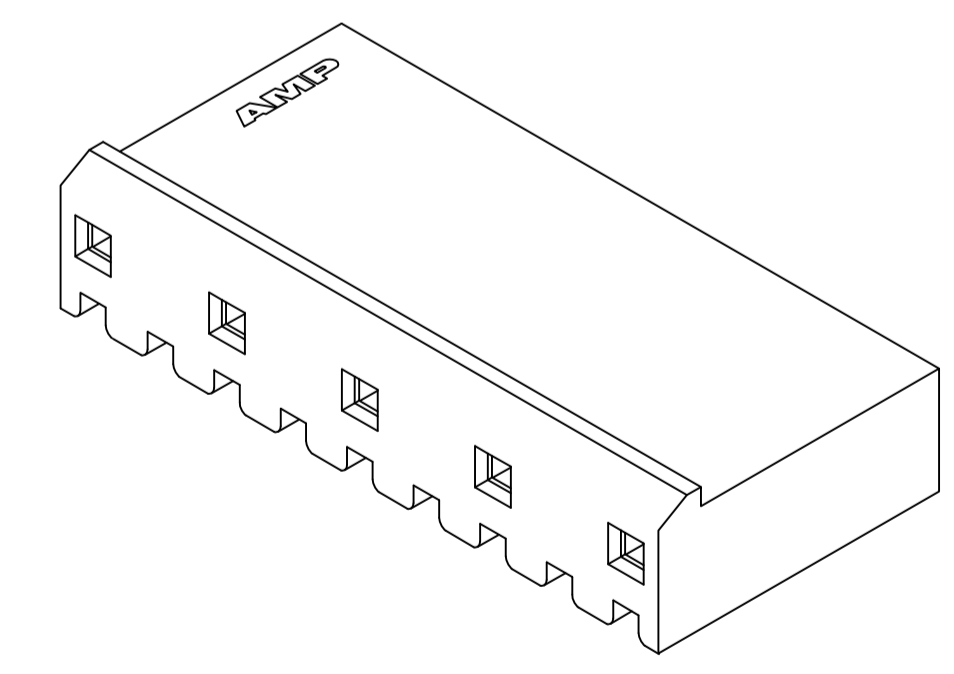
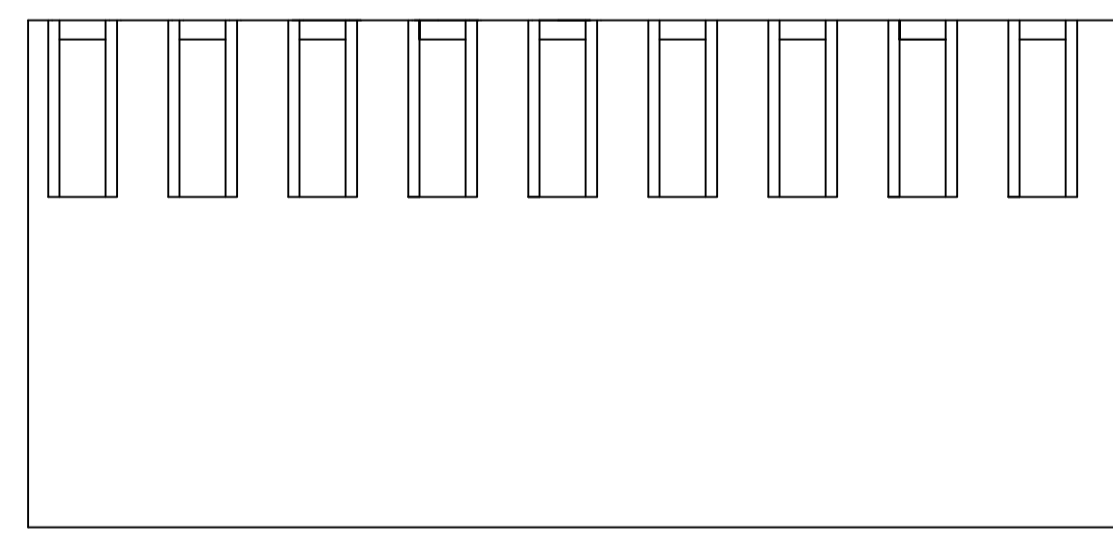
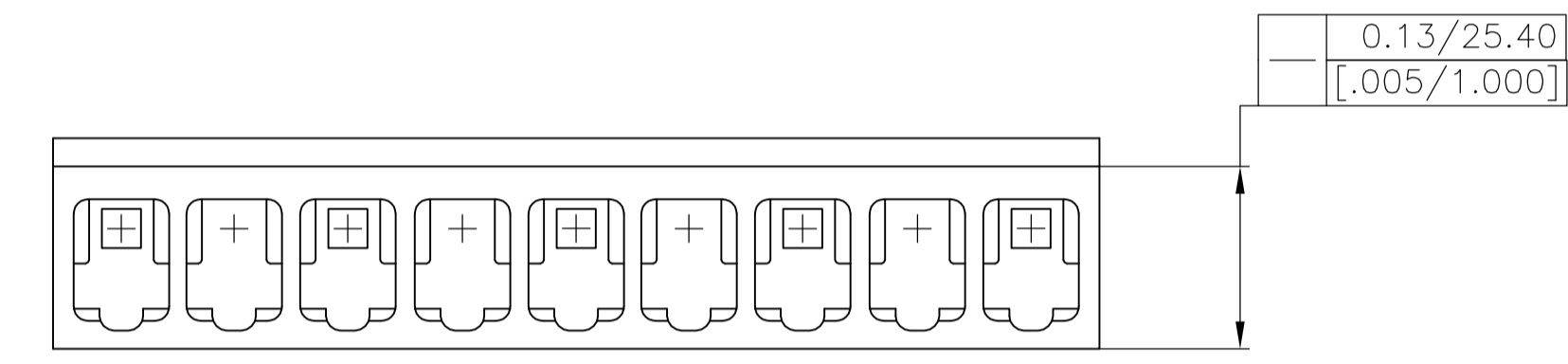
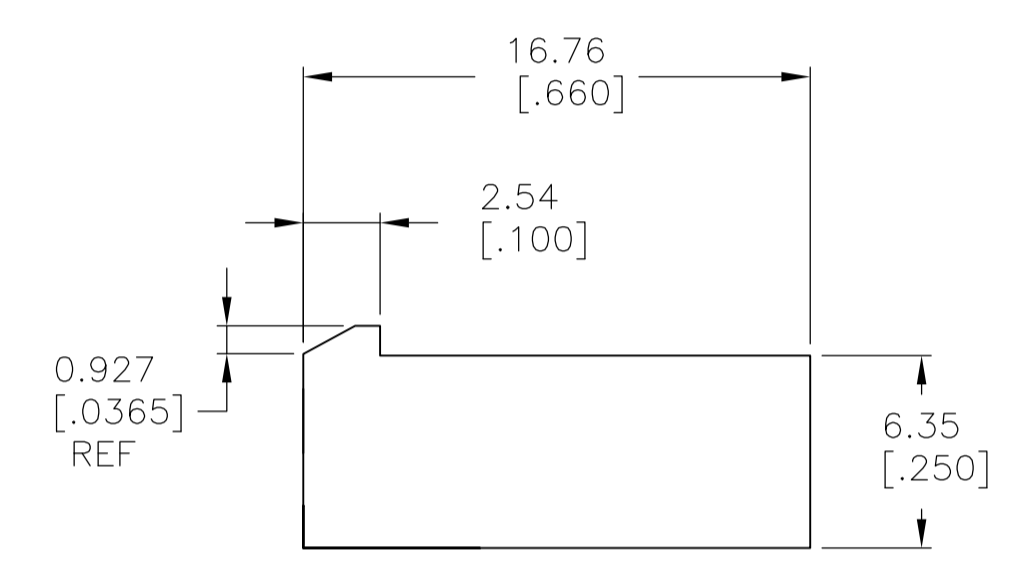
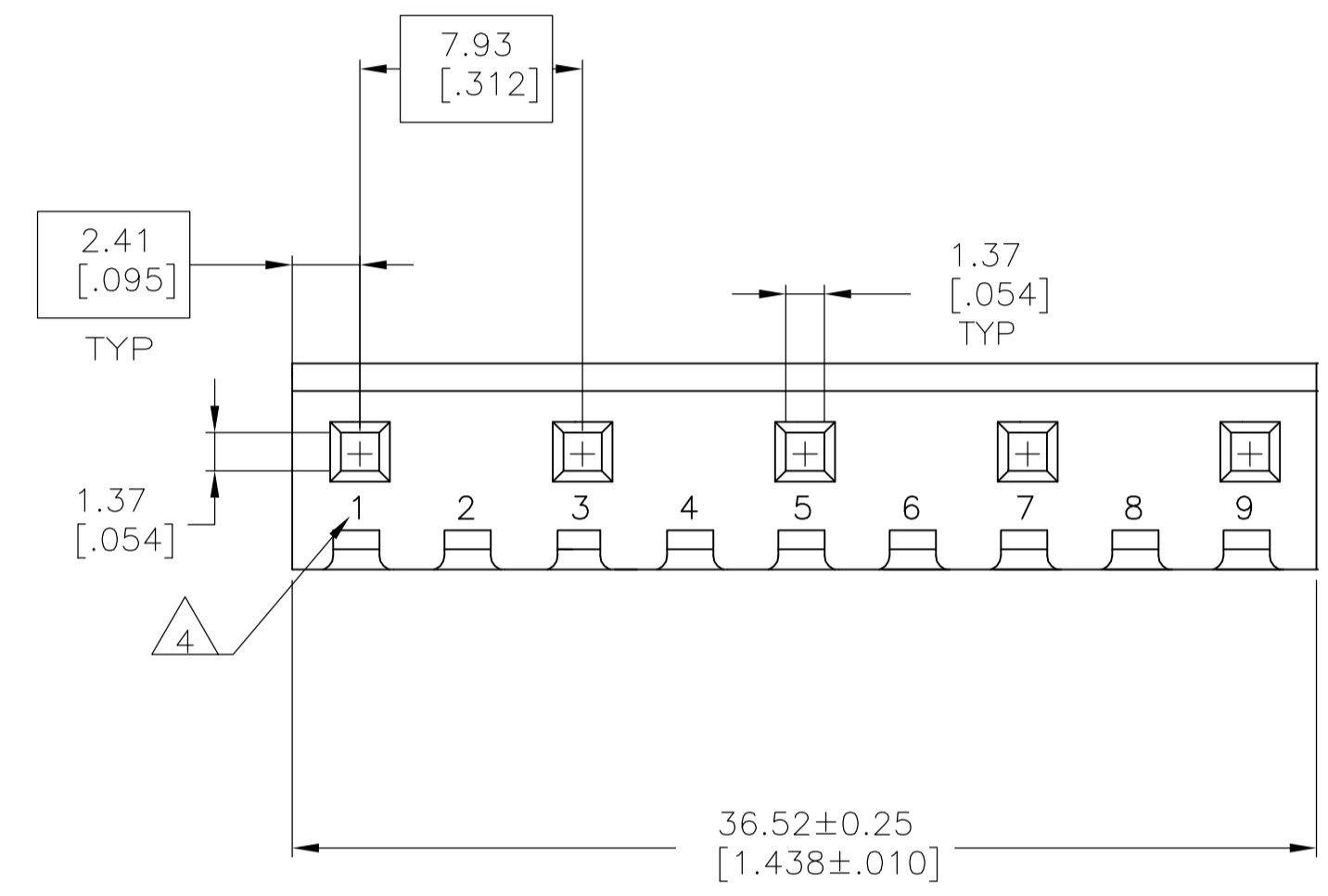


LOC	DIST	REVISIONS				
CM	00	REV	DESCRIPTION	DATE	BY	CHK
		B	REVISED PER ECO-12-007807	06AUG12	KH	SM

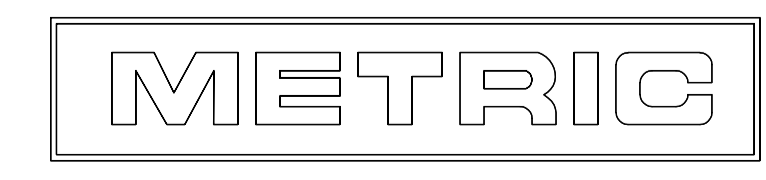
- 1 UNIT ACCEPTS 1.14 [.045] SQUARE OR ROUND POST.
- 2 UNIT ACCEPTS STANDARD SL-156 CONTACTS.
- 3 UNIT ACCEPTS KEYING PLUG 640254-1 AND KEYING PIN 640255-1.
- 4 CIRCUIT I.D. NUMBER(S), TO BE LOCATED SEQUENTIALLY AS SHOWN.
- 5 DIMENSIONS IN BRACKETS ARE IN INCHES.
- 6 OPTIONAL CONSTRUCTION (BOTH CORNERS) UP TO 0.38[.015].
- 7 ACCEPTS UP TO .110 INCH INSULATION WIRE.



SCALE 10:1



3-DIMENSIONAL MODEL NTS



2,4,6,8	9	1744138-9
CIRCUIT NO BLOCKED	NO OF CIRCUITS	PART

THIS DRAWING IS A CONTROLLED DOCUMENT.		DWG: K. WHITAKER 16NOV2005	STE TE Connectivity	
DIMENSIONS: mm [INCHES]		CHK: D. ROSSI 16NOV2005	NAME: HOUSING WITH LOCKING RAMP, SL-156, FOR LARGE WIRE INSULATION	
TOLERANCES UNLESS OTHERWISE SPECIFIED:		APP'D: D. ROSSI 16NOV2005	PRODUCT SPEC	
0. PLC	± -	APPLICATION SPEC		
1. PLC	± -	SIZE: A1		
2. PLC	± -	CAGE CODE: 00779		
3. PLC	± 0.13 [.005]	DRAWING NO: 1744138		
4. PLC	± -	RESTRICTED TO: -		
ANGLES	± 0° 30'	WEIGHT: -		
MATERIAL: NYLON,UL94V-0,NAT	FINISH: -	CUSTOMER DRAWING		
		SCALE: 4:1		SHEET 1 OF 1
				REV B