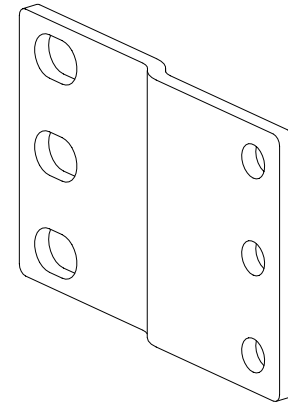
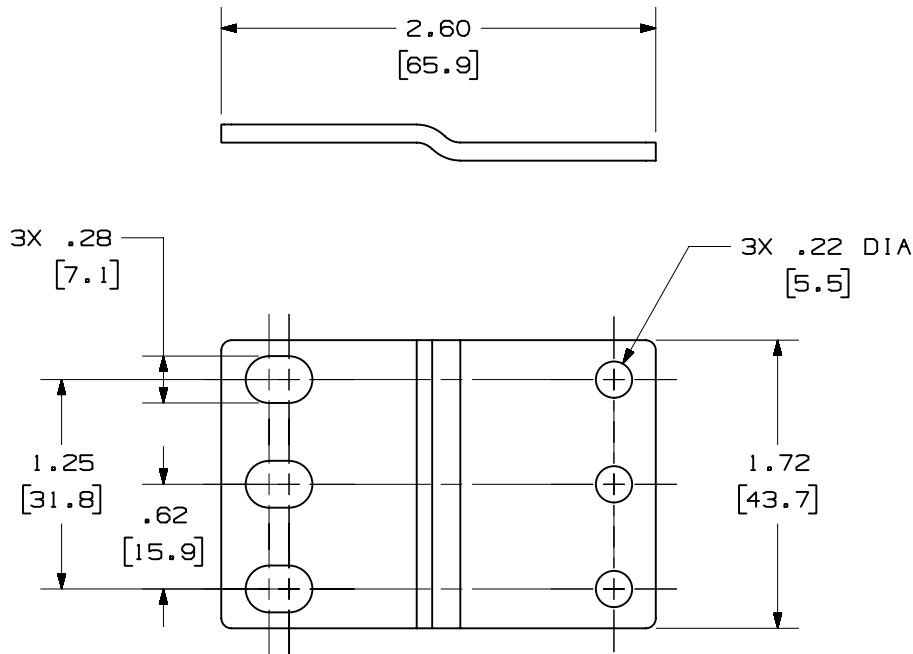


THIS COPY IS PROVIDED ON A RESTRICTED BASIS AND IS NOT TO BE USED IN ANY WAY DETRIMENTAL TO THE INTERESTS OF PANDUIT CORP.

PANDUIT P/N	WEIGHT
PEB1	2.81 LB/10 PCS (1274.6 g/10 PCS)

NOTES:

- SEE CATALOG FOR COMPLETE LIST OF PARTS APPLICABLE FOR USE WITH THIS PART.
- DIMENSIONS IN PARENTHESES ARE IN METRIC.
- PART INCLUDES:
2- EXTENDER BRACKET
4- 12-24 SCREWS
4- M6 METRIC SCREWS



CAD FILENAME/LAYERS M00673CA_DC_00B.PRT

PANDUIT CORP. TINLEY PARK, ILLINOIS

1 RACK UNIT PANEL EXTENDER BRACKET (PEB1) CUSTOMER DRAWING

UNLESS OTHERWISE SPECIFIED,
DIMENSIONAL TOLERANCES ARE:
(.X) ± (.XXX) ± .010 (.3)
(.XX) ± .03 (.8) ANGLES ±

UNLESS OTHERWISE SPECIFIED,
ALL DIMENSIONS ARE GIVEN
IN INCHES, THIRD ANGLE PROJECTION.

REV	DATE	BY	CHK	DESCRIPTION	ECN	CHK	CUST	SUP
I	5-2-02	JDWE		A. ADDED METRIC SCREWS	00673-10			
R	1-5-00	JsP	KLGO	RELEASED TO PRODUCTION.	00673-10	RLFR	RLFR	

DRAWN BY
JsP
DATE
1-5-00
CHECKED BY
KLGO

MAT'L:

SCALE
NONE
DRAWING NO.
00673-10
DWG
A
SIZE