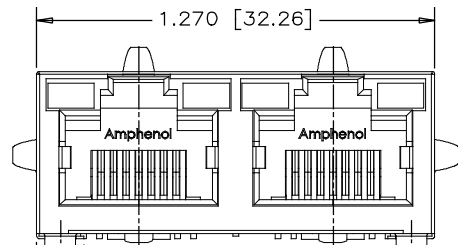
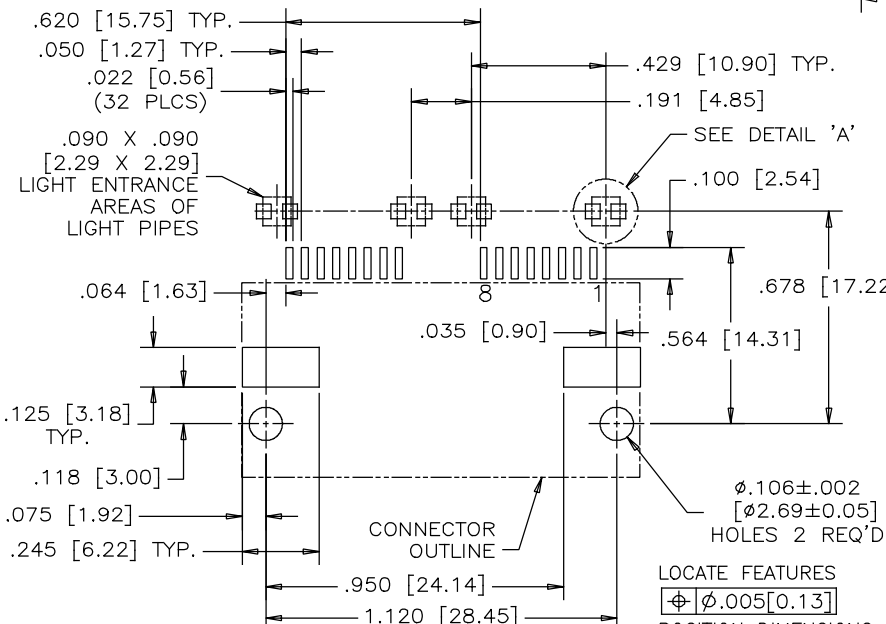


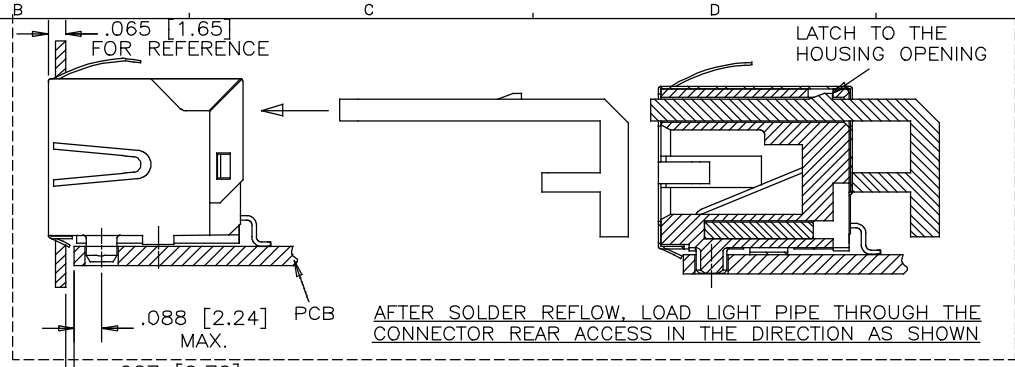
TOP VIEW



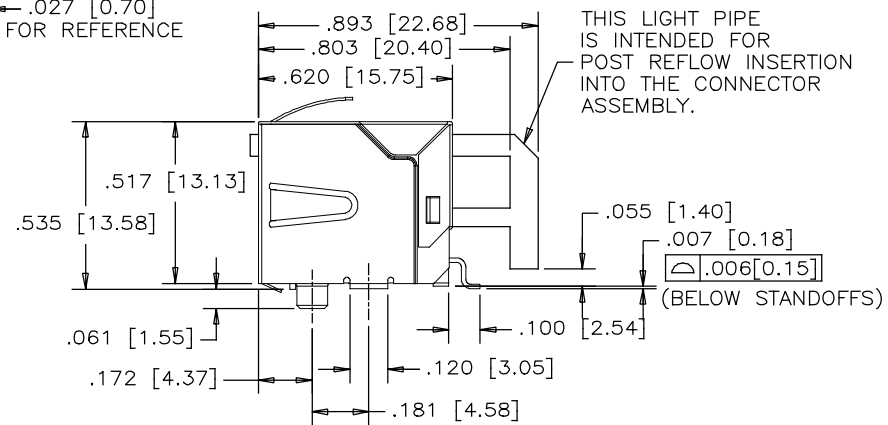
FRONT VIEW



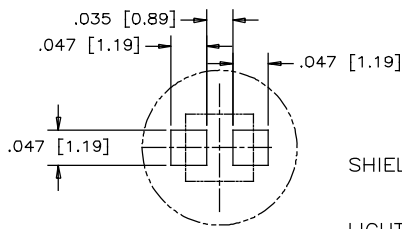
RECOMMENDED P.C.B. LAYOUT
(COMPONENT SIDE OF BOARD)



AFTER SOLDER REFLOW, LOAD LIGHT PIPE THROUGH THE CONNECTOR REAR ACCESS IN THE DIRECTION AS SHOWN

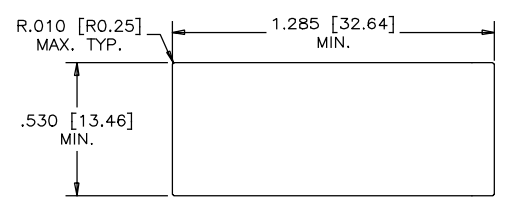


SIDE VIEW



DETAIL 'A'
(ENLARGED)
SMT LED SOLDER PAD
(SMT LED TO BE PROVIDED BY THE CUSTOMER)

SYM		ZONE	REVISIONS	ECN, ERN NO.	DATE	APPRD.
A			PROPOSAL		2005/07/06	L.CHAN
B			UPDATE DRAWING		2015/03/12	L.CHAN
C			CORRECT FRONT VIEW FIGURE AND DIMENSION		2016/01/19	L.CHAN



RECOMMENDED PANEL CUTOUT

MATERIALS:
 PLASTIC HOUSING: HIGH TEMPERATURE ENGINEERING THERMOPLASTIC
 FLAMMABILITY RATING UL 94V-0

CONTACTS:
 PHOSPHOR BRONZE
 PLATING: 20 μ" [0.51 MICRONS] MIN. GOLD ON MATING SURFACES.
 50 μ" [1.27 MICRONS] MIN. NICKEL UNDERPLATE.
 100 μ" [2.54 MICRONS] MIN. MATTE TIN ON CONTACT TAILS.

SHIELD:
 COPPER ALLOY
 PLATING: NICKEL

LIGHT PIPE: CLEAR POLYCARBONATE RATED UL 94V-0.

PART NUMBER: RJ SSE-538X-02

LIGHT PIPE DESIGNATION
 0 - BLOCKED
 1 - WITH LIGHT PIPE

MATERIAL	DRAWN PWANG	DATE 05/07/06	Amphenol Canada Corp.	
-----	DESIGNED		TITLE 2 PORT, SURFACE MOUNT, RJ45	
	CHECKED L.CHAN	05/07/06	MODULAR JACK, 8 POSITION, 8 CONTACTS,	
	I. E. APPRD. YM	05/07/06	SHIELDED, LIGHT PIPES OPTIONAL - RoHS COMPLIANT	
	Q. A. APPRD. X	X	DWG	DRAWING NO. P-RJSSE-538X-02
	DWG. APPRD. X	X	REV.	C
FINISH	ENG. REL. NO. X		SCALE 3/1	WT. -----
-----	REF. EAR 12781		SURF. -----	SHEET 1 OF 1
	DIMENSIONS ARE IN CODE ID. NO. INCHES [mm]	03554		

THIS DOCUMENT CONTAINS PROPRIETARY INFORMATION AND SUCH INFORMATION MAY NOT BE DISCLOSED TO OTHERS FOR ANY PURPOSE OR USED FOR MANUFACTURING PURPOSES WITHOUT WRITTEN PERMISSION FROM AMPHENOL CANADA CORP.