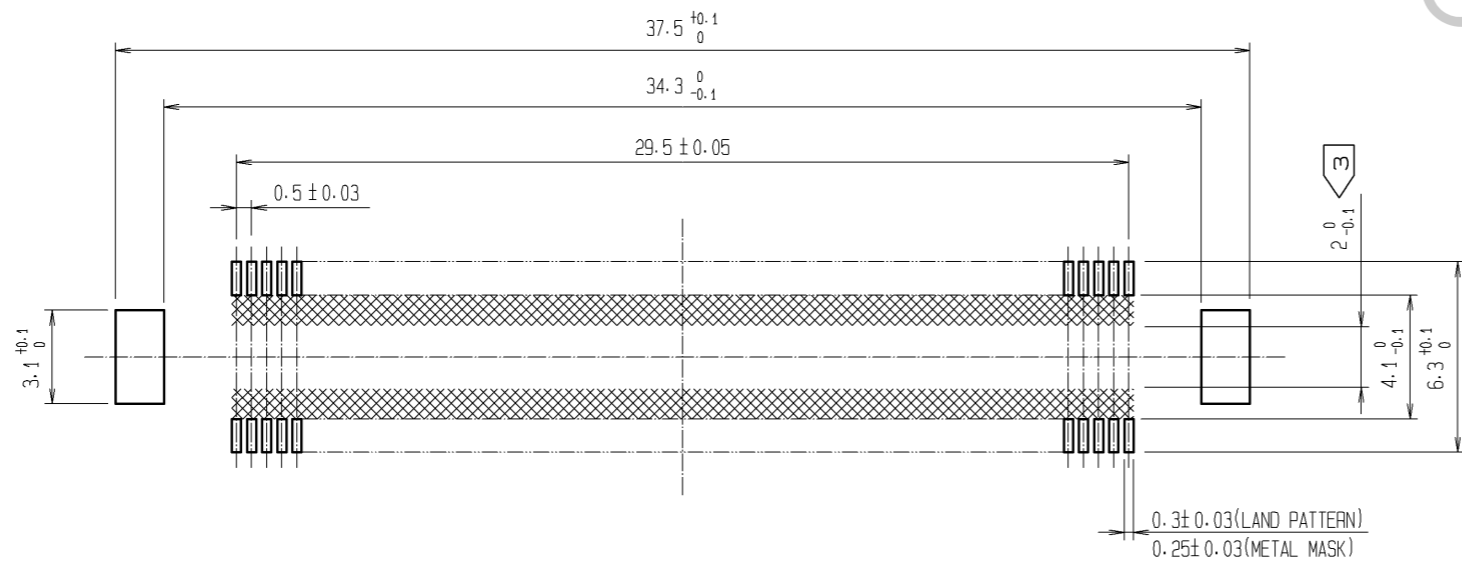


RECOMMENDED LAND PATTERN DIMENSION OF PCB  
(RECOMMENDED METAL MASK THICKNESS: 0.15mm)

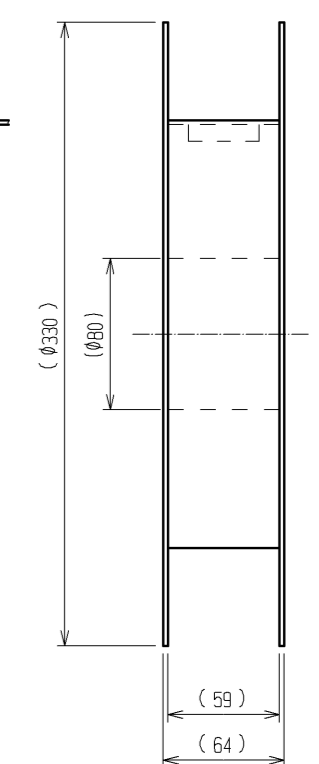
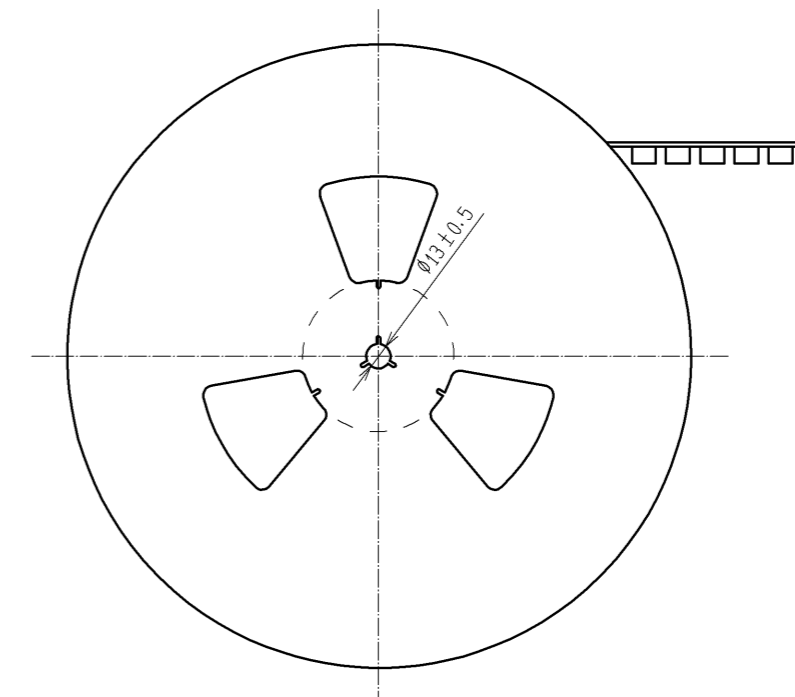
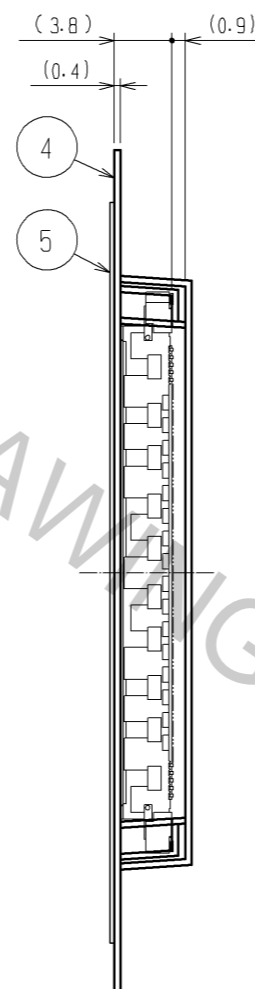
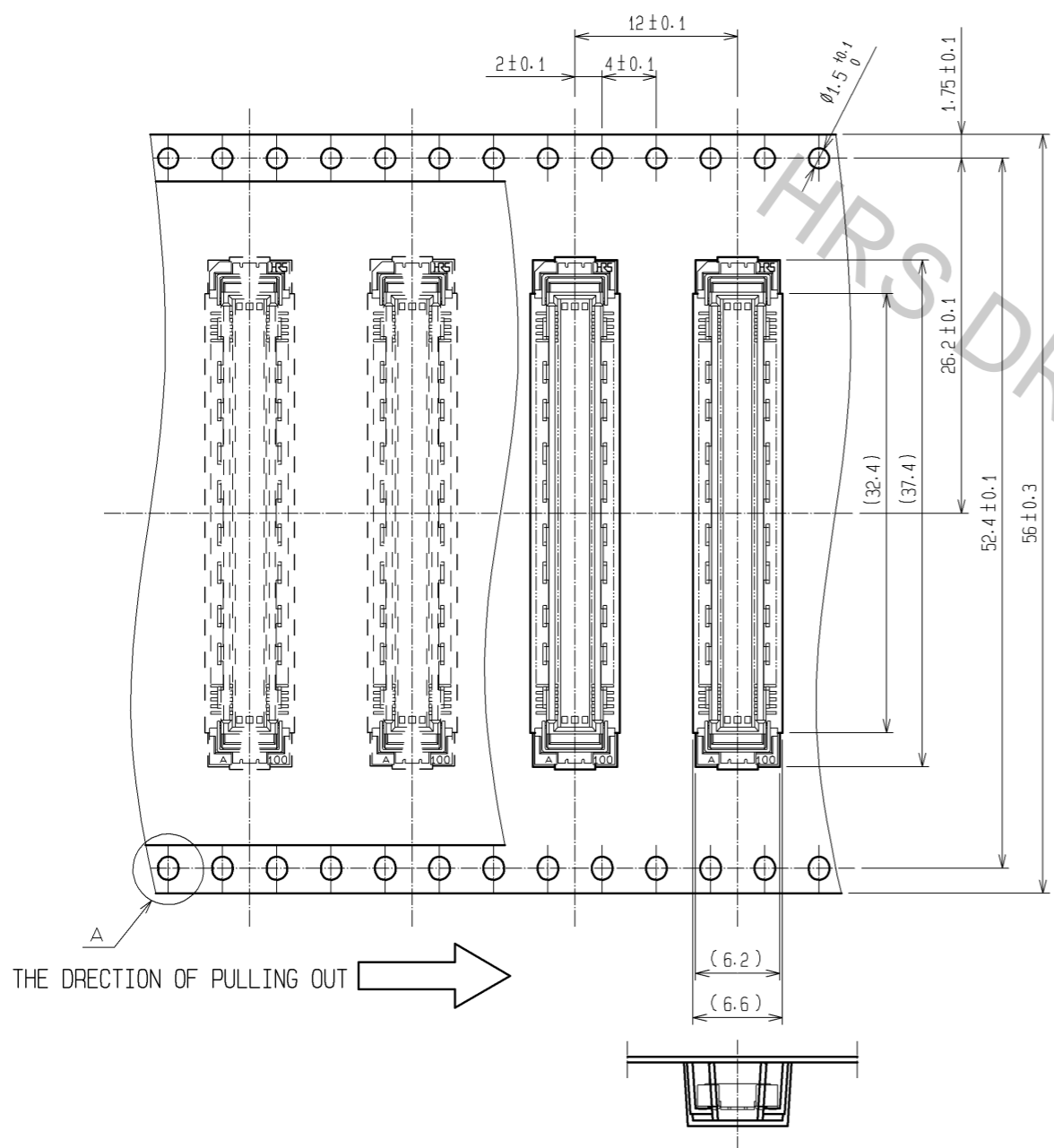


- NOTES
- 1 SMT LEAD-COPLANARITY: 0.1 MAX.
  - 2 THIS PRODUCT HAS NO POLARITY TO PATTERN FOR MOUNTING.
  - ③ MAKE SURE WIDTH OF PATTERN IS WITHIN THAT OF LAND, OR LEAD MAY TOUCH PATTERN. (THIS APPLIES TO HATCHED AREA.)
  - 4 EMBOSS CARRIER TAPE PACKAGE IS APPLIED ON THIS PRODUCT. PLEASE REFER TO THE SHEET 2/2 FOR THE DETAILS.
  - 5 THE DIMENSIONS IN PARENTHESES ARE FOR REFERENCE.

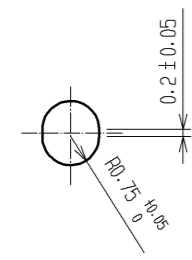
| 3     | PHOSPHOR BRONZE | TIN-PLATING  |         |  |                          |          |         |      |
|-------|-----------------|--|---------|--|--------------------------|----------|---------|------|
| 2     | PHOSPHOR BRONZE | CONTACT AREA: GOLD 0.1μm min.<br>LEAD AREA: TIN-PLATING 1μm min.<br>UNDER PLATING: NICKEL 1μm min.                                       | 5       | POLYESTER  | TOP COVER TAPE           |          |         |      |
| 1     | LCP             | BEIGE UL94V-0  | 4       | POLYSTYRENE  | EMBOSSED CARRIER TAPE    |          |         |      |
| NO.   | MATERIAL        | FINISH   | REMARKS | NO.  | MATERIAL                 | FINISH   | REMARKS |      |
| UNITS | mm              | SCALE  | 4 : 1   | COUNT  | DESCRIPTION OF REVISIONS | DESIGNED | CHECKED | DATE |
|       |                 | APPROVED : HT. YAMAGUCHI 10.07.29<br>CHECKED : HT. YAMAGUCHI 10.07.29<br>DESIGNED : SY. KAMIGA 10.07.29<br>DRAWN : HK. SUNADORI 10.07.28 |         | DRAWING NO. EDC3-151957-21<br>PART NO. FX10B-120P-SV(91)<br>CODE NO. CL570-0052-6-91 |                          | DATE 1/2 |         |      |

# DRAWING FOR PACKING(2:1)

REELED DIMENSION(Free)



A (5:1)



- NOTES
- 1 REEL : 1000 CONNECTORS.
  - 2 MINIMUM 10 COMPARTMENTS FROM BOTH REEL ENDS REMAIN EMPTY.
  - 3 THIS PRODUCT HAS NO POLARITY TO TAPE AND REEL PACKAGING.
  - 4 THE DIMENSIONS IN PARENTHESES ARE FOR REFERENCE.

|            |             |                   |     |
|------------|-------------|-------------------|-----|
| <b>HRS</b> | DRAWING NO. | EDC3-151957-21    | 2/2 |
|            | PART NO.    | FX10B-120P-SV(91) |     |
|            | CODE NO.    | CL570-0052-6-91   |     |
|            |             |                   |     |

Apr.1.2017 Copyright 2017 HIROSE ELECTRIC CO., LTD. All Rights Reserved.