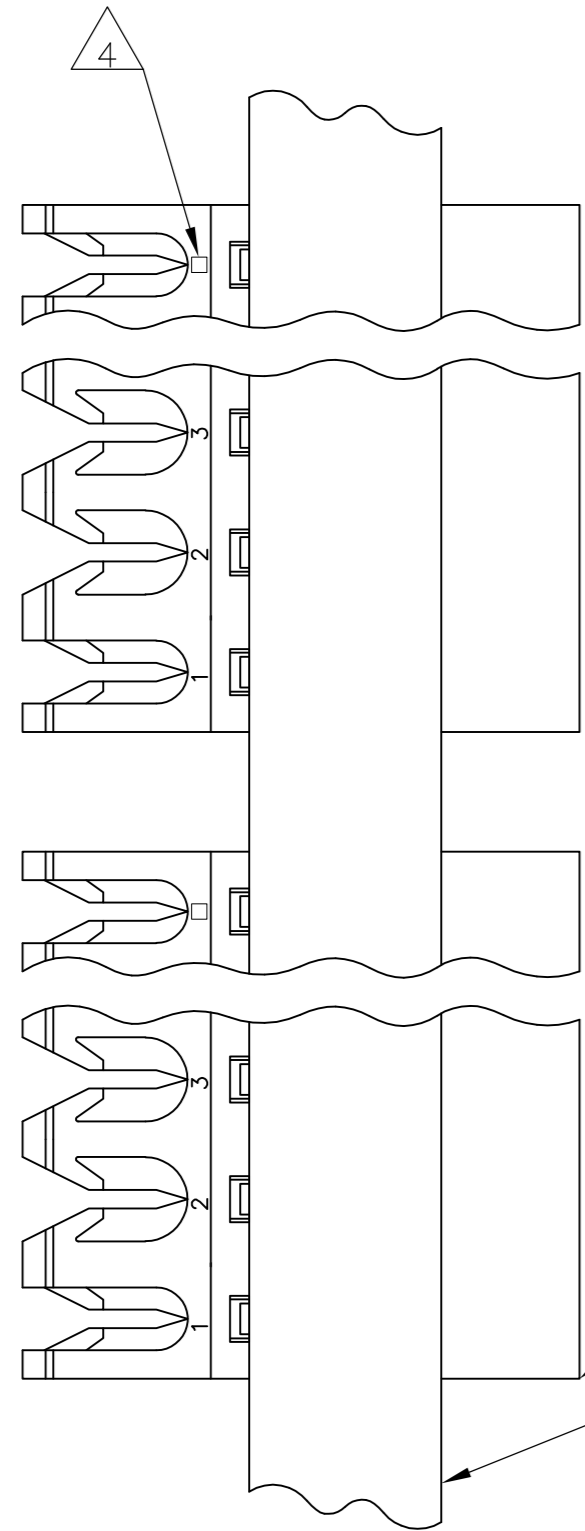


THIS DRAWING IS UNPUBLISHED. RELEASED FOR PUBLICATION  
 © COPYRIGHT BY TYCO ELECTRONICS CORPORATION. ALL RIGHTS RESERVED.

LOC		DIST		REVISIONS			
P	LTR	DESCRIPTION	DATE	DWN	APVD		
	G	ECO-07-012868	14JUN07	KW	DB		
	G1	REVISED PER ECO-09-021510	12SEP09	KK	AEG		



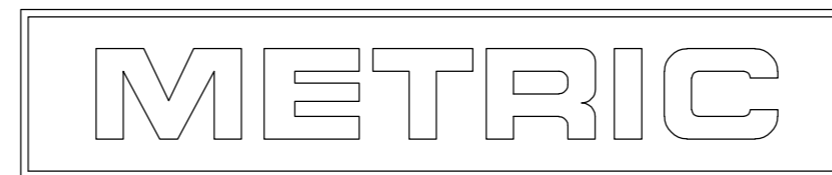
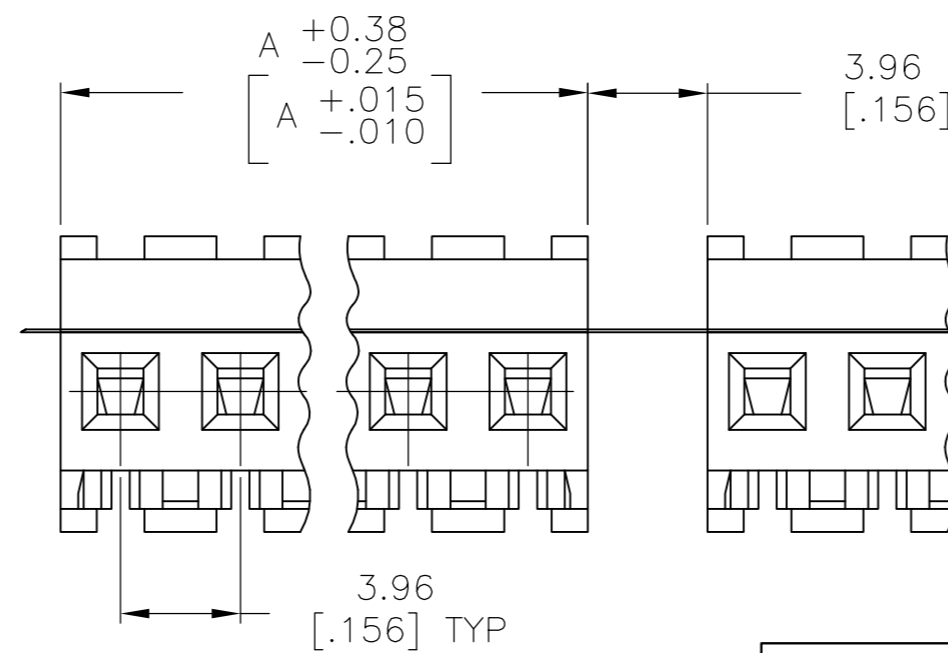
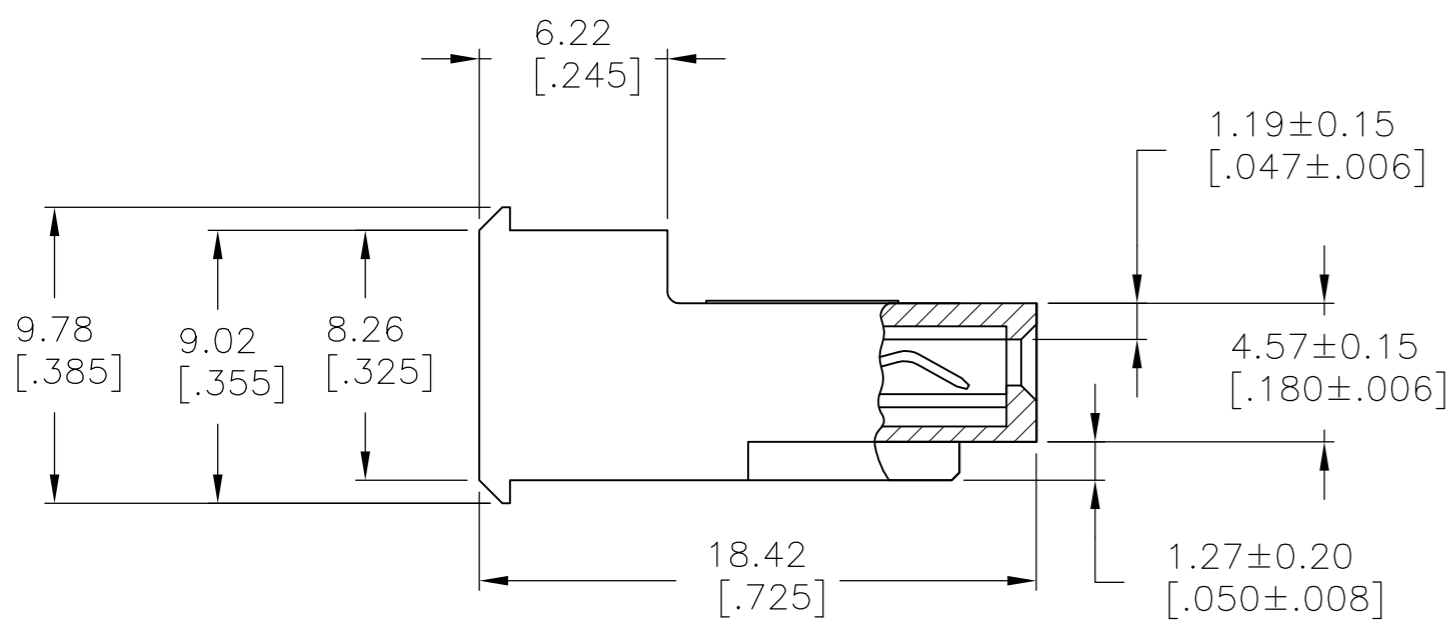
1 MATERIAL: CONNECTOR - NYLON UL94V-2 (BLUE)  
 CONTACTS - 0.30[.012] THICK COPPER ALLOY  
 BRIGHT TIN-LEAD 0.00203[.000080] MIN THICK  
 FOR CONTACTS 641310-2 THRU 2-641310-4  
 MATTE WHISKER MITIGATED TIN 0.00203[.000080] MIN  
 THICKNESS OVER NICKEL UNDERPLATE FOR  
 3-641310-2 THRU 5-641310-4.

- 2. CONTACTS ACCEPT 26 AWG WIRE WITH 2.41[.095] MAX INSULATION DIAMETER.
- 3. CONTACTS MUST ACCEPT 1.14±0.03 [.045±.001] SQUARE POST AND REMAIN LOCKED IN POSITION.
- 4 IDENTIFICATION NUMBER FOR LAST CIRCUIT MAY NOT APPEAR ON ALL ASSEMBLIES.
- 5. DIMENSIONS IN BRACKETS ARE IN INCHES.
- 6. HOUSING FEATURES ARE: FEED-THRU WITHOUT LOCKING RAMP
- 7 OBSOLETE PARTS: OBSOLETE CIS STREAMLINING PER D.RENAUD/D.SINISI

CONNECTOR ASSEMBLY

TAPE

DIM A	NO OF CIRCUITS	PART NO
95.10 [3.744]	24	5-641310-4
91.14 [3.588]	23	5-641310-3
87.17 [3.432]	22	5-641310-2
83.21 [3.276]	21	5-641310-1
79.25 [3.120]	20	5-641310-0
75.29 [2.964]	19	4-641310-9
71.32 [2.808]	18	4-641310-8
67.36 [2.652]	17	4-641310-7
63.40 [2.496]	16	4-641310-6
59.44 [2.340]	15	4-641310-5
55.47 [2.184]	14	4-641310-4
51.51 [2.028]	13	4-641310-3
47.55 [1.872]	12	4-641310-2
43.59 [1.716]	11	4-641310-1
39.62 [1.560]	10	4-641310-0
35.66 [1.404]	9	3-641310-9
31.70 [1.248]	8	3-641310-8
27.74 [1.092]	7	3-641310-7
23.77 [.936]	6	3-641310-6
19.81 [.780]	5	3-641310-5
15.85 [.624]	4	3-641310-4
11.89 [.468]	3	3-641310-3
7.92 [.312]	2	3-641310-2
95.10 [3.744]	24	2-641310-4
91.14 [3.588]	23	2-641310-3
87.17 [3.432]	22	2-641310-2
83.21 [3.276]	21	2-641310-1
79.25 [3.120]	20	2-641310-0
75.29 [2.964]	19	1-641310-9
71.32 [2.808]	18	1-641310-8
67.36 [2.652]	17	1-641310-7
63.40 [2.496]	16	1-641310-6
59.44 [2.340]	15	1-641310-5
55.47 [2.184]	14	1-641310-4
51.51 [2.028]	13	1-641310-3
47.55 [1.872]	12	1-641310-2
43.59 [1.716]	11	1-641310-1
39.62 [1.560]	10	1-641310-0
35.66 [1.404]	9	641310-9
31.70 [1.248]	8	641310-8
27.74 [1.092]	7	641310-7
23.77 [.936]	6	641310-6
19.81 [.780]	5	641310-5
15.85 [.624]	4	641310-4
11.89 [.468]	3	641310-3
7.92 [.312]	2	641310-2



THIS DRAWING IS A CONTROLLED DOCUMENT.

DIMENSIONS: mm [INCHES]	TOLERANCES UNLESS OTHERWISE SPECIFIED: 0 PLC ± - 1 PLC ± - 2 PLC ± - 3 PLC ± 0.13 [.005] 4 PLC ± - ANGLES ± -	DWN B. LEWIS 02 MAY 96 CHK R. SWING 02 MAY 96 APVD D. CLARK 02 MAY 96	Tyco Electronics Corporation Harrisburg, Pa 17105-3608	
MATERIAL 1	FINISH 1	PRODUCT SPEC 108-1051 APPLICATION SPEC 114-1020	NAME MTA-156 CONNECTOR ASSEMBLY, 26 AWG, STANDARD TAPE MOUNTED	
CUSTOMER DRAWING		WEIGHT -	SIZE A2	RESTRICTED TO -
		SCALE 4:1	CAGE CODE 00779	DRAWING NO C-641310
		SHEET 1 OF 1	REV G1	