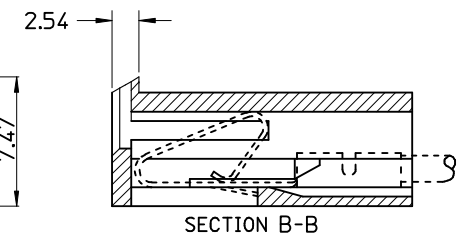
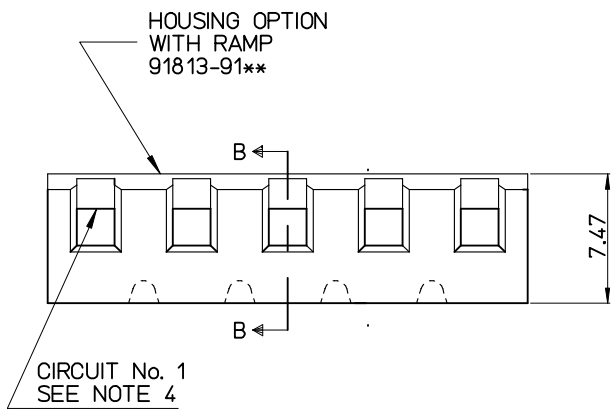
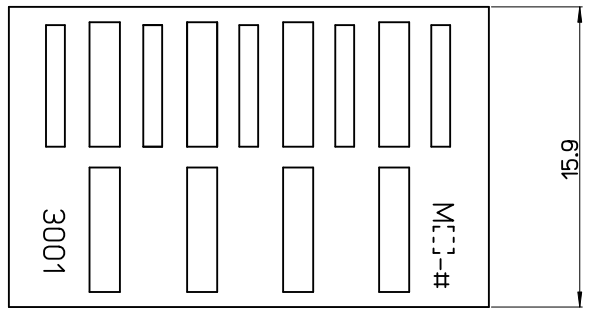


12	91813-9012	91813-9112	55.88	±0.25	60.96	^{+0.3} / _{-0.3}
11	▲-9011	▲-9111	50.80	±0.20	55.88	^{+0.3} / _{-0.3}
10	-9010	-9110	45.72	±0.20	50.80	^{+0.3} / _{-0.3}
9	-9009	-9109	40.64	±0.20	45.72	^{+0.3} / _{-0.3}
8	-9008	-9108	35.56	±0.20	40.64	^{+0.3} / _{-0.3}
7	-9007	-9107	30.48	±0.20	35.56	^{+0.3} / _{-0.3}
6	-9006	-9106	25.40	±0.10	30.48	^{+0.3} / _{-0.3}
5	-9005	-9105	20.32	±0.10	25.40	^{+0.3} / _{-0.3}
4	-9004	-9104	15.24	±0.10	20.32	^{+0.3} / _{-0.3}
3	▼-9003	▼-9103	10.16	±0.10	15.24	^{+0.3} / _{-0.3}
2	91813-9002	91813-9102	5.08	±0.10	10.16	^{+0.3} / _{-0.3}
CKT. SIZE	PART NO. WITHOUT RAMP	PART NO. WITH RAMP	A		B	
DIMENSION						

HOUSINGS WITH VOIDED CIRCUITS

5	91813-9121	20.32	±0.10	25.40	^{+0.3} / _{-0.3}	2.4
CKT. SIZE	PART NO. WITHOUT RAMP	PART NO. WITH RAMP	A		B	
DIMENSION						
VOIDED CIRCUIT						



- NOTE:**
1. MATERIAL: POLYAMIDE (PA6), UL-94V-2
COLOR: WHITE
 2. FINISH: N/A
 3. PRODUCT SPECIFICATION: PS-99020-0087
 4. CIRCUIT 1 MAY OR MAY NOT LINE UP WITH CIRCUIT 1 OF THE MATING PART.
 5. THIS PART CONFORMS TO CLASS B REQUIREMENTS OF COSMETIC SPECIFICATION PS-45499-002.
 6. THIS HOUSING USES KK TERM. No's. 2478, 2578 & 2878.
 7. COLOR VARIATION MAY BE VISIBLE ON THE HOUSING SURFACES.

ADD 91813-9121 EC NO: UCP/2013-1655 DRWN:KIPPER 2012/10/26 CHKD:NGUYEN 2012/10/26 APPR:FSM:TH 2012/11/20	QUALITY SYMBOLS	GENERAL TOLERANCES (UNLESS SPECIFIED)	DIMENSION STYLE	SCALE	DESIGN UNITS	THIRD ANGLE PROJECTION
	$\nabla_A=0$ $\nabla_C=0$ $\nabla_P=0$	mm INCH 4 PLACES ± --- ± --- 3 PLACES ± --- ± --- 2 PLACES ± 0.25 ± --- 1 PLACE ± 0.35 ± --- 0 PLACE ± ±	MM ONLY	7:1	METRIC	
		ANGULAR ±1/2° DRAFT WHERE APPLICABLE MUST REMAIN WITHIN DIMENSIONS	DRAWN BY: DWASZKIEWICZ CHECKED BY: J. DENNEHY APPROVED BY: FSMITH DATE: 2006/06/08 DATE: 2010/12/06	TITLE: 5.08MM KK CRP TERM HSG GLOW WIRE COMPATIBLE		
	C1		SEE CHART THIS DRAWING CONTAINS INFORMATION THAT IS PROPRIETARY TO MOLEX INCORPORATED AND SHOULD NOT BE USED WITHOUT WRITTEN PERMISSION	MATERIAL NO. SD-91813-001 DOCUMENT NO.		SHEET NO. 1 OF 1