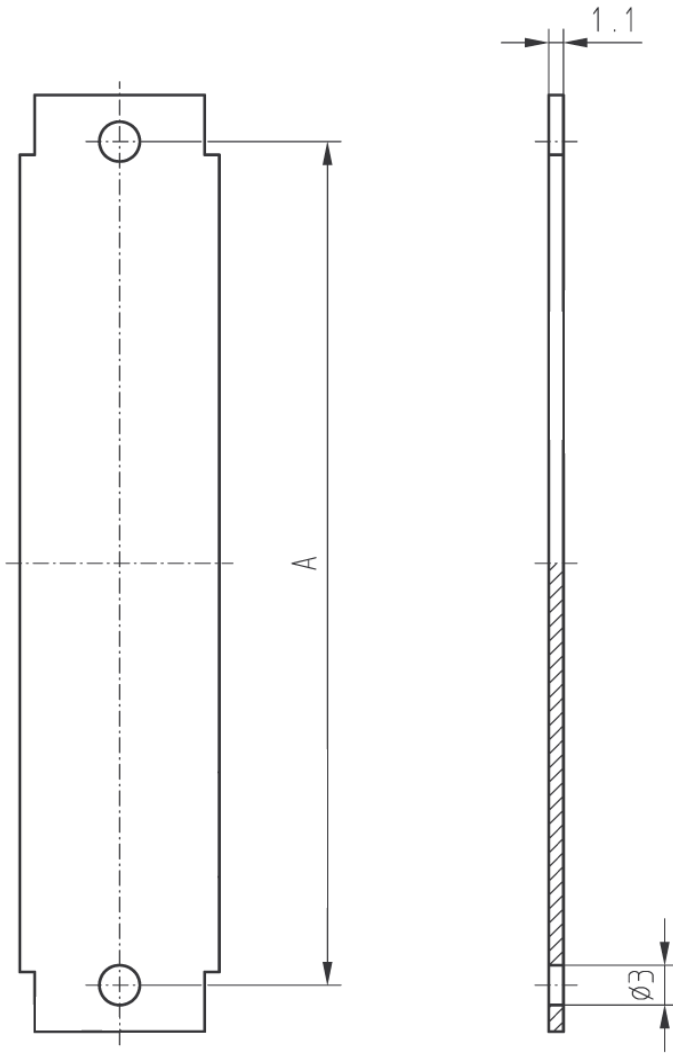


used for:



Position	A	Part Number
9	25.00	160X01879A
15	33.30	160X01889A
25	47.04	160X01899A
37	63.50	160X01819A

Directive 2002/95/EC  
„RoHS“  
Compliant

THIS DRAWING MAY NOT BE COPIED OR REPRODUCED IN ANY WAY, AND MAY NOT BE PASSED ON TO A THIRD PARTY WITHOUT WRITTEN PERMISSION.  
 OWNERSHIP AND COPYRIGHT OF CONEC GmbH  
 DO NOT ALTER CAD DRAWING BY HAND

CONEC CORPORATION BRAMPTON, ONTARIO				tolerance			
				2007	date	name	
				drawn	May 24	Vincent Ke	
				appd.	May 24	J. Chaudry	
				norm			
				d-old			
a	origin						
rev.	description	date	name				

scale: 2:1	
material: DIE-CAST ZINC	
title: COVER PLATES	
RoHS compliant	
dwg no: 16K1A1652	AutoCAD 2005
part no: SEE P/N ABOVE	
DIN-A 4	sh: 1/1