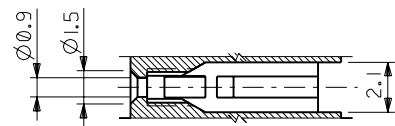
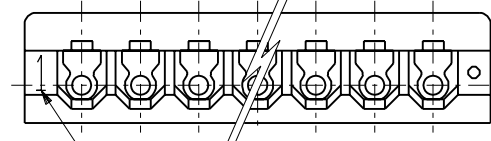
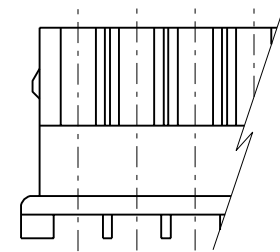
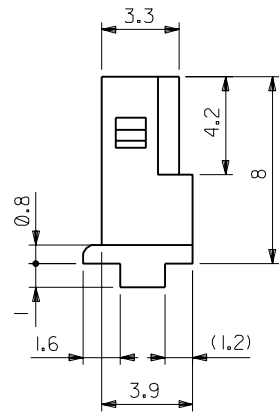
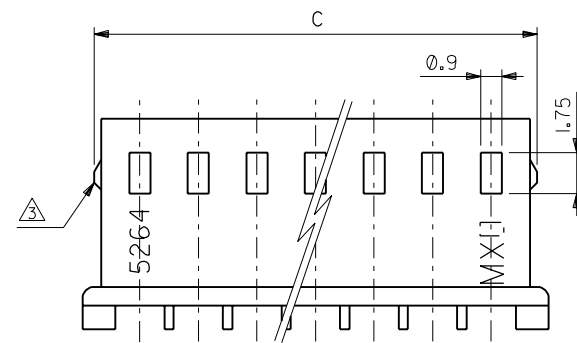


SECT.Z-Z



SECT.Y-Y



CIRCUIT NO.

	50.8	47.5	20	
	48.3	45	19	
	45.8	42.5	18	
	43.3	40	17	
	40.8	37.5	16	
	38.3	35	15	
	35.8	32.5	14	
	33.3	30	13	
	30.8	27.5	12	
	28.3	25	11	
	25.8	22.5	10	
	23.3	20	9	
	21.4	20.8	17.5	8
	18.9	18.3	15	7
	16.4	15.8	12.5	6
	13.9	13.3	10	5
	11.4	10.8	7.5	4
	8.9	8.3	5	3
	6.4	5.8	2.5	2
DIM. C	DIM. B	DIM. A	NO. OF CKTS.	

角度 ANGLE ±3° 30以上 OVER +0.3 10以上 30未満 UNDER +0.25 10未満 UNDER +0.2 一般公差 GENERAL TOLERANCES		記号 LTR 変更内容 REVISION RECORD		DR. CHK. 日付 DATE		材料 MATERIAL 66NYLON, UL94V-0 仕上げ FINISH — — 適用電線範囲 WIRE RANGE — — 被覆外径 INS. RANGE — — DRAWN BY 〆/VII K.I.OJO APP'D BY 〆/〆〆〆 〆/〆〆〆 M.FURUKOSHIMA		MOLEX-JAPAN CO.,LTD. 日本モレックス株式会社 REVISE ONLY ON CAD SYSTEM TITLE 名称 2.5 LOW PROFILE RECEPTACLE HOUSING (DYED COLOR) DWG. NO. SHEET 1 OF 2 REV A SD-5264-N-***	
--	--	--	--	-----------------------------------	--	--	--	--	--

DWG. NO. SHEET 2 OF 2
SD-5264-N-**-**

E

D

C
B
A
DIMENSIONS IN METRIC DO NOT SCALE DRAWING

F

E

D

C

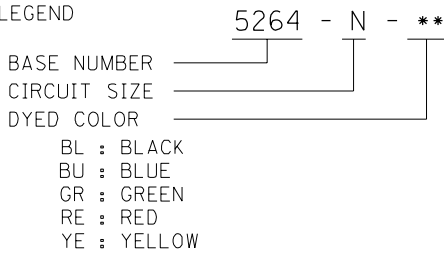
B

A

5264-N-**-**

NOTES

1. SUITABLE TERMINAL : 5263 SERIES
2. MATES WITH : 5267, 5268 SERIES
- △ 3 9 CIRCUITS OR MORE WITHOUT LOCK.
4. LEGEND



39-02-6205	5264-20-YE	39-02-6204	5264-20-RE	39-02-6203	5264-20-GR	39-02-6202	5264-20-BU	39-02-6201	5264-20-BL	20
▲ -6195	▲ -19-YE	▲ -6194	▲ -19-RE	▲ -6193	▲ -19-GR	▲ -6192	▲ -19-BU	▲ -6191	▲ -19-BL	19
-6185	-18-YE	-6184	-18-RE	-6183	-18-GR	-6182	-18-BU	-6181	-18-BL	18
-6175	-17-YE	-6174	-17-RE	-6173	-17-GR	-6172	-17-BU	-6171	-17-BL	17
-6165	-16-YE	-6164	-16-RE	-6163	-16-GR	-6162	-16-BU	-6161	-16-BL	16
-6155	-15-YE	-6154	-15-RE	-6153	-15-GR	-6152	-15-BU	-6151	-15-BL	15
-6145	-14-YE	-6144	-14-RE	-6143	-14-GR	-6142	-14-BU	-6141	-14-BL	14
-6135	-13-YE	-6134	-13-RE	-6133	-13-GR	-6132	-13-BU	-6131	-13-BL	13
-6125	-12-YE	-6124	-12-RE	-6123	-12-GR	-6122	-12-BU	-6121	-12-BL	12
-6115	-11-YE	-6114	-11-RE	-6113	-11-GR	-6112	-11-BU	-6111	-11-BL	11
-6105	-10-YE	-6104	-10-RE	-6103	-10-GR	-6102	-10-BU	-6101	-10-BL	10
-6095	-09-YE	-6094	-09-RE	-6093	-09-GR	-6092	-09-BU	-6091	-09-BL	9
-6085	-08-YE	-6084	-08-RE	-6083	-08-GR	-6082	-08-BU	-6081	-08-BL	8
-6075	-07-YE	-6074	-07-RE	-6073	-07-GR	-6072	-07-BU	-6071	-07-BL	7
-6065	-06-YE	-6064	-06-RE	-6063	-06-GR	-6062	-06-BU	-6061	-06-BL	6
-6055	-05-YE	-6054	-05-RE	-6053	-05-GR	-6052	-05-BU	-6051	-05-BL	5
-6045	-04-YE	-6044	-04-RE	-6043	-04-GR	-6042	-04-BU	-6041	-04-BL	4
▼ -6035	▼ -03-YE	▼ -6034	▼ -03-RE	▼ -6033	▼ -03-GR	▼ -6032	▼ -03-BU	▼ -6031	▼ -03-BL	3
39-02-6025	5264-02-YE	39-02-6024	5264-02-RE	39-02-6023	5264-02-GR	39-02-6022	5264-02-BU	39-02-6021	5264-02-BL	2
EDP NO.	ENG. NO.	EDP NO.	ENG. NO.	EDP NO.	ENG. NO.	EDP NO.	ENG. NO.	EDP NO.	ENG. NO.	NO. OF CKTS.
5264-N-YE		5264-N-RE		5264-N-GR		5264-N-BU		5264-N-BL		

<table border="1" style="width: 100%; border-collapse: collapse;"> <tr> <td>角度 ANGLE</td><td>±3°</td></tr> <tr> <td>30°以上 OVER</td><td>+0.3</td></tr> <tr> <td>10°以上 30°未満 UNDER</td><td>+0.25</td></tr> <tr> <td>10°未満 UNDER</td><td>+0.2</td></tr> <tr> <td>一般公差 GENERAL TOLERANCES</td><td>記号 LTR 変更内容 REVISION RECORD</td></tr> </table>		角度 ANGLE	±3°	30°以上 OVER	+0.3	10°以上 30°未満 UNDER	+0.25	10°未満 UNDER	+0.2	一般公差 GENERAL TOLERANCES	記号 LTR 変更内容 REVISION RECORD	<table border="1" style="width: 100%; border-collapse: collapse;"> <tr> <td>材料 MATERIAL</td><td>66NYLON, UL94V-0</td></tr> <tr> <td>仕上げ FINISH</td><td>—</td></tr> <tr> <td>適用電線範囲 WIRE RANGE</td><td>—</td></tr> <tr> <td>被覆外径 INS. RANGE</td><td>—</td></tr> <tr> <td>DRAWN BY 02/07/11 H.HIRAMOTO</td><td>CHK'D BY 02/07/11 H.HIRAMOTO</td></tr> <tr> <td>APP'D BY 02/07/11 M.NAKAMURA</td><td>尺 度 SCALE 5 - 1</td></tr> <tr> <td>DR. 日付 DATE</td><td>DR. 日付 DATE</td></tr> </table>	材料 MATERIAL	66NYLON, UL94V-0	仕上げ FINISH	—	適用電線範囲 WIRE RANGE	—	被覆外径 INS. RANGE	—	DRAWN BY 02/07/11 H.HIRAMOTO	CHK'D BY 02/07/11 H.HIRAMOTO	APP'D BY 02/07/11 M.NAKAMURA	尺 度 SCALE 5 - 1	DR. 日付 DATE	DR. 日付 DATE	<table border="1" style="width: 100%; border-collapse: collapse;"> <tr> <td colspan="2" style="text-align: center;"> MOLEX-JAPAN CO.,LTD. 日本モレックス株式会社 </td> </tr> <tr> <td colspan="2" style="text-align: center;"> REVISE ONLY ON CAD SYSTEM TITLE 名称 2.5 LOW PROFILE RECEPTACLE HOUSING (DYED COLOR) </td> </tr> <tr> <td>DWG. NO.</td><td>SHEET 2 OF 2</td><td>REV</td> </tr> <tr> <td>SD-5264-N-**-**</td><td></td><td>A</td> </tr> </table>	MOLEX-JAPAN CO.,LTD. 日本モレックス株式会社		REVISE ONLY ON CAD SYSTEM TITLE 名称 2.5 LOW PROFILE RECEPTACLE HOUSING (DYED COLOR)		DWG. NO.	SHEET 2 OF 2	REV	SD-5264-N-**-**		A
		角度 ANGLE	±3°																																		
30°以上 OVER	+0.3																																				
10°以上 30°未満 UNDER	+0.25																																				
10°未満 UNDER	+0.2																																				
一般公差 GENERAL TOLERANCES	記号 LTR 変更内容 REVISION RECORD																																				
材料 MATERIAL	66NYLON, UL94V-0																																				
仕上げ FINISH	—																																				
適用電線範囲 WIRE RANGE	—																																				
被覆外径 INS. RANGE	—																																				
DRAWN BY 02/07/11 H.HIRAMOTO	CHK'D BY 02/07/11 H.HIRAMOTO																																				
APP'D BY 02/07/11 M.NAKAMURA	尺 度 SCALE 5 - 1																																				
DR. 日付 DATE	DR. 日付 DATE																																				
MOLEX-JAPAN CO.,LTD. 日本モレックス株式会社																																					
REVISE ONLY ON CAD SYSTEM TITLE 名称 2.5 LOW PROFILE RECEPTACLE HOUSING (DYED COLOR)																																					
DWG. NO.	SHEET 2 OF 2	REV																																			
SD-5264-N-**-**		A																																			
		<p style="font-size: small;">THIS DRAWING CONTAINS INFORMATION THAT IS PROPRIETARY TO MOLEX(JAPAN) AND SHOULD NOT BE USED WITHOUT WRITTEN PERMISSION 本図面は日本モレックス(株)の所有する情報を含むもので 当社の許可なく複製を禁止する。</p> <p style="text-align: right;">EN-01C(032)MXJ-32</p>																																			

8

7

6

5

4

3

2

1