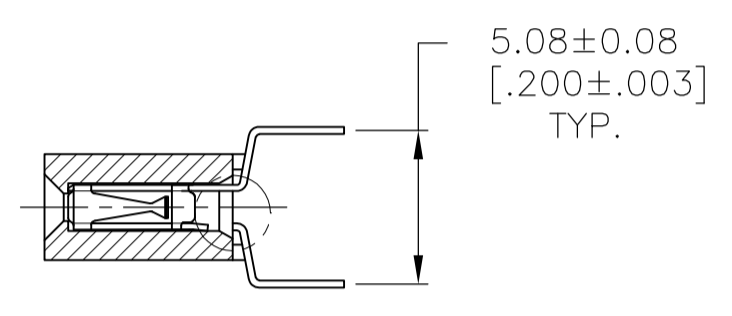


RECOMMENDED HOLE LAYOUT



- 1 MARK PART NUMBER AND DATE CODE IN APPROXIMATE LOCATION SHOWN, EITHER SIDE.
- 2 CONTACT FINISH: DUPLEX PLATED 0.25µm [.000010] GOLD IN CONTACT AREA, 3.81-7.62µm [.000150-.000300] BRIGHT TIN-LEAD ON LEADS ALL OVER 1.27µm [.000050] MIN NICKEL.
- 3 TOLERANCE NON CUMULATIVE.
- 4 THESE DIMENSIONS PERTAIN TO CAVITY CENTERLINES ONLY, NOT TO CONTACT LOCATION
- 5 HOUSING: FLAME RETARDANT, GLASS FILLED POLYESTER, BLACK. CONTACT: PHOSPHOR BRONZE.
- 6 FOR 2 POS, DATE CODE IS STAMPED OPPOSITE SIDE OF TE LOGO.
- 7 TE LOGO AND CSA LOGO ARE MOLDED INTO HOUSING.
- 8 NO PART NUMBER MARKING REQUIRED FOR THIS PART.
- 9 CONTACT FINISH: DUPLEX PLATED 0.25µm [.000010] GOLD IN CONTACT AREA, 3.81-7.62µm [.000150-.000300] MATTE TIN ON LEADS ALL OVER 1.27µm [.000050] MIN NICKEL.
- 10 ROHS 2002/95/EC COMPLIANT

99.06	[3.900]	101.60	[4.000]	40	10	8-147726-9
96.52	[3.800]	99.06	[3.900]	39	10	8-147726-8
93.98	[3.700]	96.52	[3.800]	38	10	8-147726-7
91.44	[3.600]	93.98	[3.700]	37	10	8-147726-6
88.90	[3.500]	91.44	[3.600]	36	10	8-147726-5
86.34	[3.400]	88.90	[3.500]	35	10	8-147726-4
83.82	[3.300]	86.34	[3.400]	34	10	8-147726-3
81.28	[3.200]	83.82	[3.300]	33	10	8-147726-2
78.74	[3.100]	81.28	[3.200]	32	10	8-147726-1
76.20	[3.000]	78.74	[3.100]	31	10	8-147726-0
73.66	[2.900]	76.20	[3.000]	30	10	7-147726-9
71.12	[2.800]	73.66	[2.900]	29	10	7-147726-8
68.58	[2.700]	71.12	[2.800]	28	10	7-147726-7
66.04	[2.600]	68.58	[2.700]	27	10	7-147726-6
63.50	[2.500]	66.04	[2.600]	26	10	7-147726-5
60.96	[2.400]	63.50	[2.500]	25	10	7-147726-4
58.42	[2.300]	60.96	[2.400]	24	10	7-147726-3
55.88	[2.200]	58.42	[2.300]	23	10	7-147726-2
53.34	[2.100]	55.88	[2.200]	22	10	7-147726-1
50.80	[2.000]	53.34	[2.100]	21	10	7-147726-0
48.26	[1.900]	50.80	[2.000]	20	10	6-147726-9
45.72	[1.800]	48.26	[1.900]	19	10	6-147726-8
43.18	[1.700]	45.72	[1.800]	18	10	6-147726-7
40.64	[1.600]	43.18	[1.700]	17	10	6-147726-6
38.10	[1.500]	40.64	[1.600]	16	10	6-147726-5
35.56	[1.400]	38.10	[1.500]	15	10	6-147726-4
33.02	[1.300]	35.56	[1.400]	14	10	6-147726-3
30.48	[1.200]	33.02	[1.300]	13	10	6-147726-2
27.94	[1.100]	30.48	[1.200]	12	10	6-147726-1
25.40	[1.000]	27.94	[1.100]	11	10	6-147726-0
22.86	[.900]	25.40	[1.000]	10	10	5-147726-9
20.32	[.800]	22.86	[.900]	9	10	5-147726-8
17.78	[.700]	20.32	[.800]	8	10	5-147726-7
15.24	[.600]	17.78	[.700]	7	10	5-147726-6
12.70	[.500]	15.24	[.600]	6	10	5-147726-5
10.16	[.400]	12.70	[.500]	5	10	5-147726-4
7.62	[.300]	10.16	[.400]	4	10	5-147726-3
5.08	[.200]	7.62	[.300]	3	10	5-147726-2
2.54	[.100]	5.08	[.200]	2	10	5-147726-1

99.06	[3.900]	101.60	[4.000]	40	3-147726-9
96.52	[3.800]	99.06	[3.900]	39	3-147726-8
93.98	[3.700]	96.52	[3.800]	38	3-147726-7
91.44	[3.600]	93.98	[3.700]	37	3-147726-6
88.90	[3.500]	91.44	[3.600]	36	3-147726-5
86.34	[3.400]	88.90	[3.500]	35	3-147726-4
83.82	[3.300]	86.34	[3.400]	34	3-147726-3
81.28	[3.200]	83.82	[3.300]	33	3-147726-2
78.74	[3.100]	81.28	[3.200]	32	3-147726-1
76.20	[3.000]	78.74	[3.100]	31	3-147726-0
73.66	[2.900]	76.20	[3.000]	30	2-147726-9
71.12	[2.800]	73.66	[2.900]	29	2-147726-8
68.58	[2.700]	71.12	[2.800]	28	2-147726-7
66.04	[2.600]	68.58	[2.700]	27	2-147726-6
63.50	[2.500]	66.04	[2.600]	26	2-147726-5
60.96	[2.400]	63.50	[2.500]	25	2-147726-4
58.42	[2.300]	60.96	[2.400]	24	2-147726-3
55.88	[2.200]	58.42	[2.300]	23	2-147726-2
53.34	[2.100]	55.88	[2.200]	22	2-147726-1
50.80	[2.000]	53.34	[2.100]	21	2-147726-0
48.26	[1.900]	50.80	[2.000]	20	1-147726-9
45.72	[1.800]	48.26	[1.900]	19	1-147726-8
43.18	[1.700]	45.72	[1.800]	18	1-147726-7
40.64	[1.600]	43.18	[1.700]	17	1-147726-6
38.10	[1.500]	40.64	[1.600]	16	1-147726-5
35.56	[1.400]	38.10	[1.500]	15	1-147726-4
33.02	[1.300]	35.56	[1.400]	14	1-147726-3
30.48	[1.200]	33.02	[1.300]	13	1-147726-2
27.94	[1.100]	30.48	[1.200]	12	1-147726-1
25.40	[1.000]	27.94	[1.100]	11	1-147726-0
22.86	[.900]	25.40	[1.000]	10	147726-9
20.32	[.800]	22.86	[.900]	9	147726-8
17.78	[.700]	20.32	[.800]	8	147726-7
15.24	[.600]	17.78	[.700]	7	147726-6
12.70	[.500]	15.24	[.600]	6	147726-5
10.16	[.400]	12.70	[.500]	5	147726-4
7.62	[.300]	10.16	[.400]	4	147726-3
5.08	[.200]	7.62	[.300]	3	147726-2
2.54	[.100]	5.08	[.200]	2	147726-1

11 6 8 OBSOLETE

6 8 OBSOLETE

FINISH		B	A	NO. OF POSN.	PART NUMBER
THIS DRAWING IS A CONTROLLED DOCUMENT. DIM M. BINNER 22JAN11. CHK J. JOLSON 20MAY02. APVD J. JOLSON 20MAY02. NAME RECP. ASSY., MOD IV, SINGLE ROW, .100 CL, VERTICAL BD. MOUNT, CLOSED ENTRY, DUAL ENTRY, SHORT PT OF CONTACT. PRODUCT SPEC 108-25022. APPLICATION SPEC 114-25018. SIZE CASE CODE DRAWING NO. RESTRICTED TO A1 00779 147726. WEIGHT - 147726. CUSTOMER DRAWING. SCALE 4:1. SHEET 1 OF 1. REV J5.					