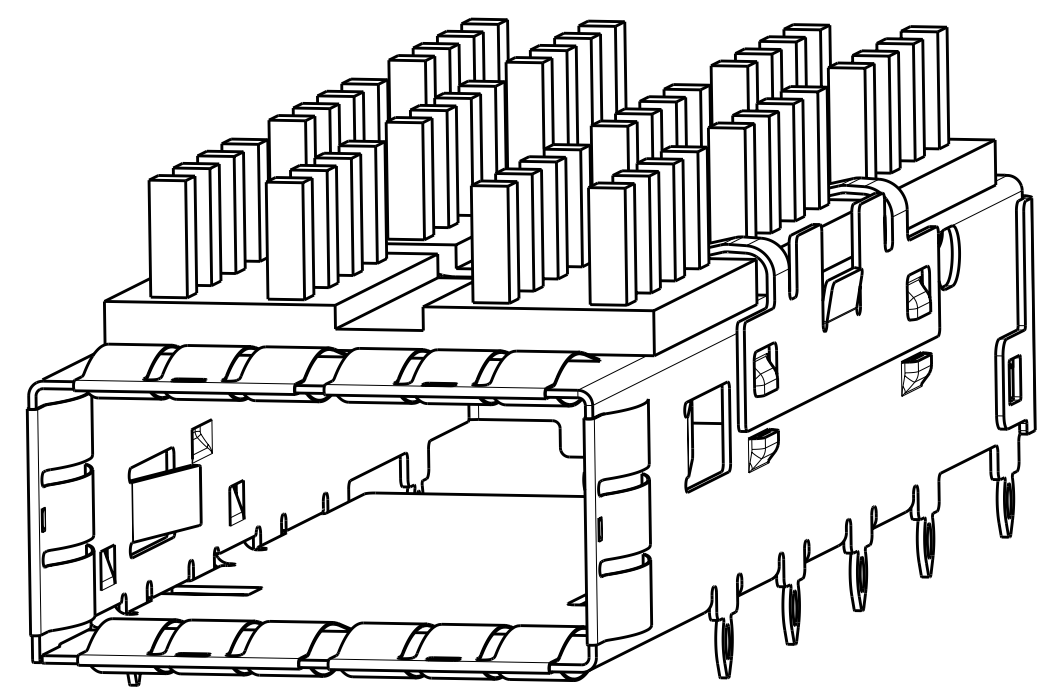
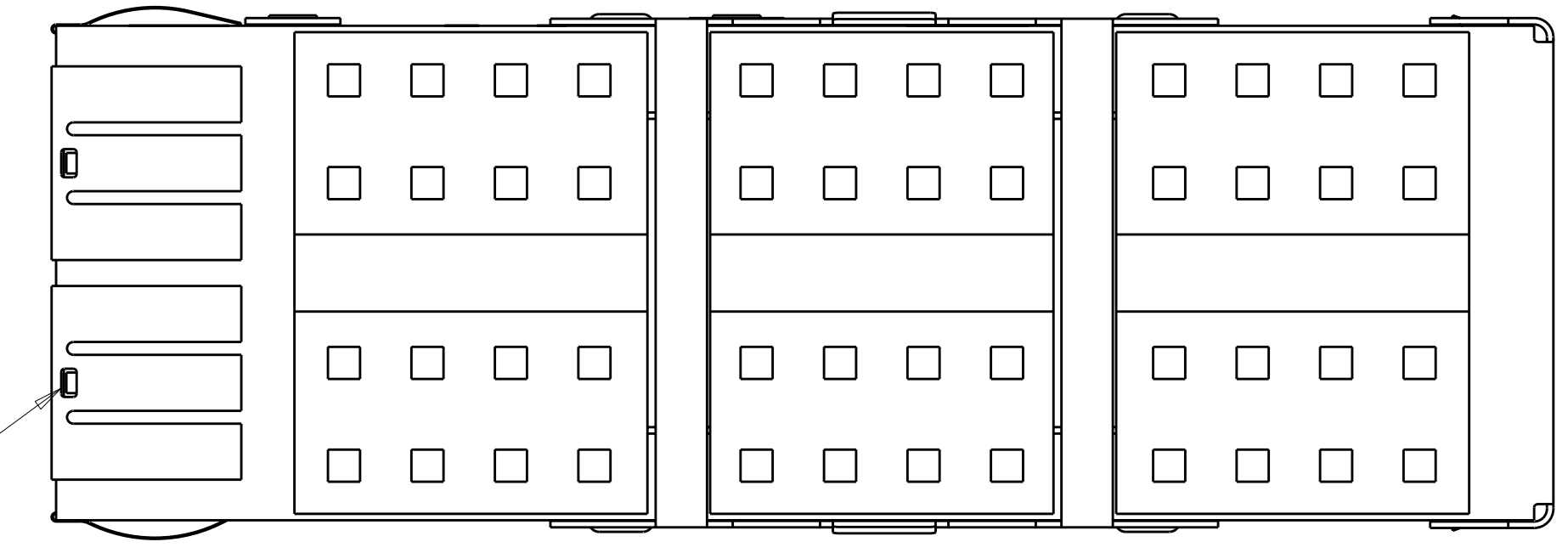


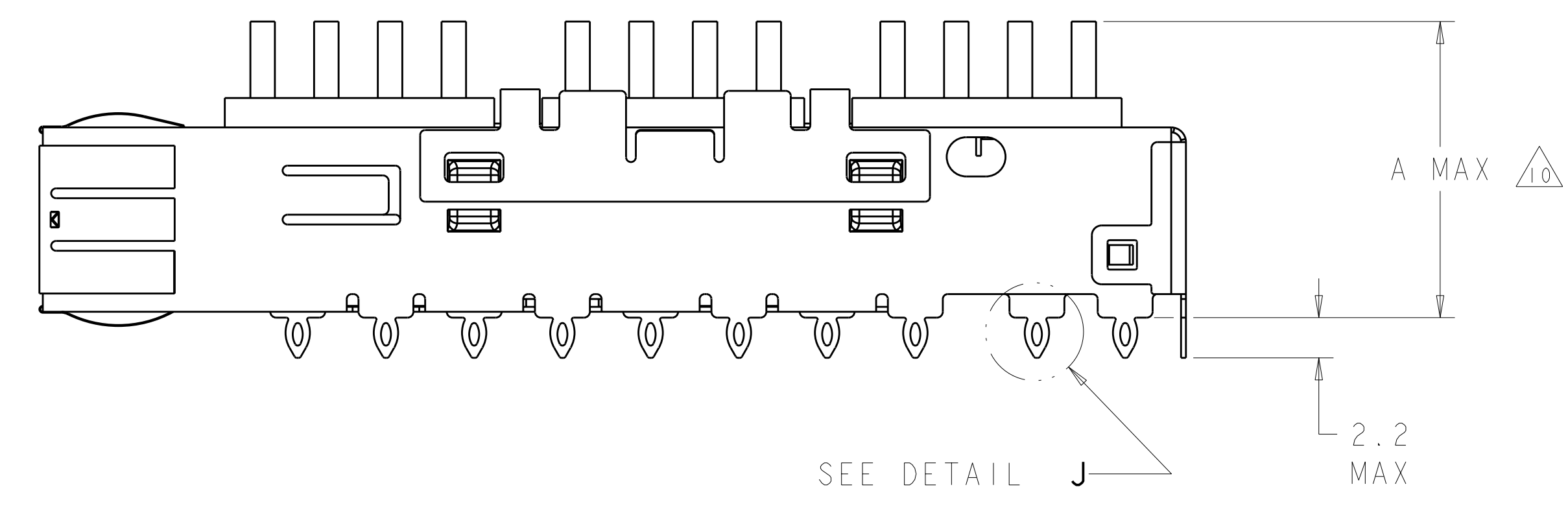
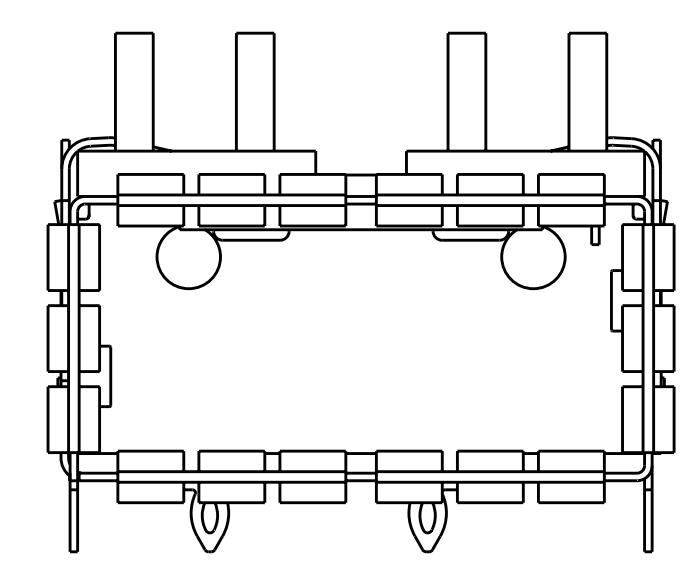
LOC	DIST	REVISIONS			
GP	00	REV	DATE	BY	APPD
		B	REV PER ECO-09-020440	11SEP2009	CR JP



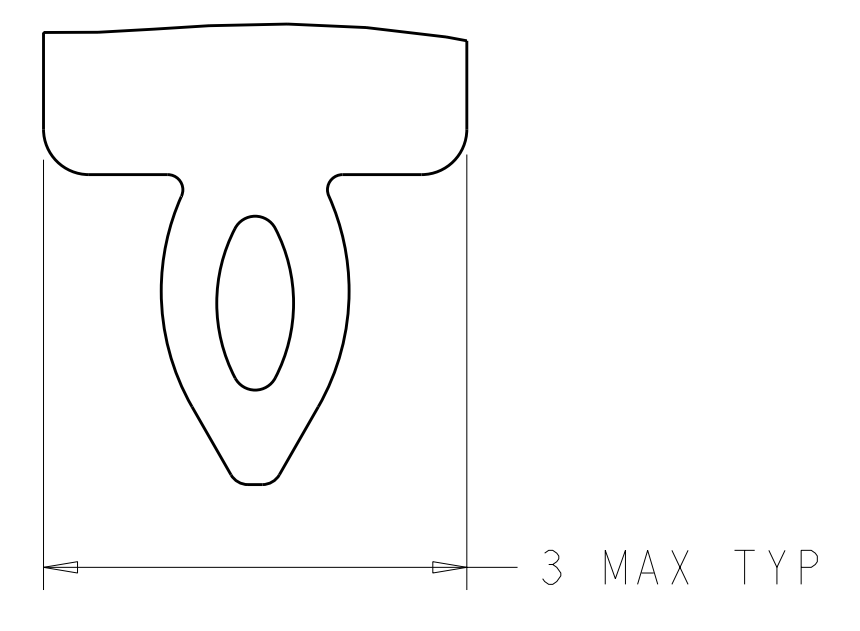
Sn42Bi58 SOLDER
6 PLACES



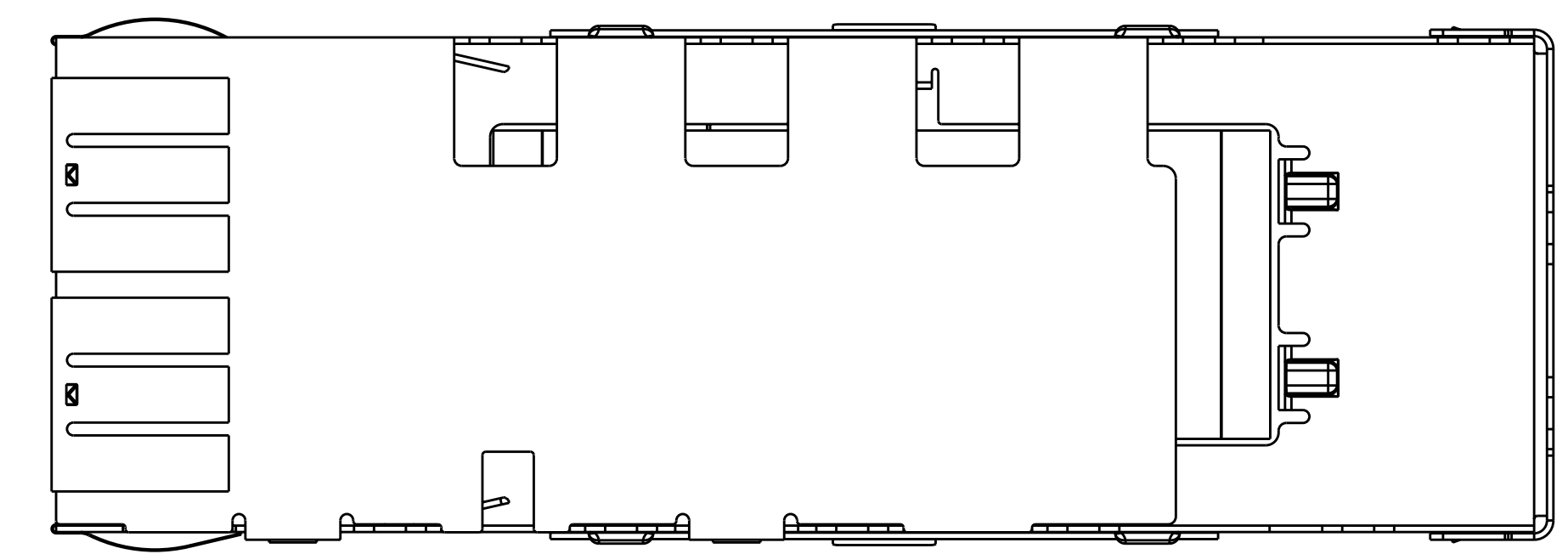
- 1. CAGE MATERIAL: NICKEL SILVER, 0.25 THICK
 HEAT SINK MATERIAL: ALUMINUM
 HEAT SINK CLIP MATERIAL: STAINLESS STEEL
 EMI SPRINGS MATERIAL: COPPER ALLOY
 - 2. MINIMUM PITCH DIMENSION.
 - 3. MATES WITH QSFP MSA COMPATIBLE TRANSCEIVER.
 - 4. REFERENCE APPLICATION SPEC 114-13217 FOR RECOMMENDED DRILL HOLE DIAMETER AND PLATING THICKNESS.
 - 5. DATUMS AND BASIC DIMENSIONS ESTABLISHED BY CUSTOMER.
 - 6. MINIMUM PC BOARD THICKNESS:
 SINGLE SIDED = 1.45mm (shown, pg. 4)
 DOUBLE SIDED = 2.2mm
 - 7. HEATSINK AND CLIP SHIPPED ASSEMBLED TO CAGE ASSEMBLY. CAGE ASSEMBLY MAY BE PRESSED INTO THE PCB AS SHIPPED.
 - 8. DATUM [-A-] IS TOP SURFACE OF HOST BOARD.
 - 9. SURFACE TRACES PERMITTED WITHIN THIS AREA EXCEPT WHERE CAGE STANDOFFS, SHOWN IN DETAIL J, CONTACT PC BOARD.
 - 10. DIMENSION APPLIES WITH MODULE INSTALLED IN THE CAGE.
 - 11. DATE CODE (YYWWD) MARKED ON TOP OF CAGE AND CONCEALED BY HEAT SINK APPLIES TO CAGE ASSEMBLY ONLY.
 - 12. SPRING FINISH: 0.8µm MIN TIN OVER 0.8µm MIN NICKEL. NON-PLATED EDGES PERMISSIBLE. HEAT SINK FINISH: 0.076 µm MIN NICKEL.
13. PRODUCT HAS NOT COMPLETED QUALIFICATION TESTING.



SEE DETAIL J



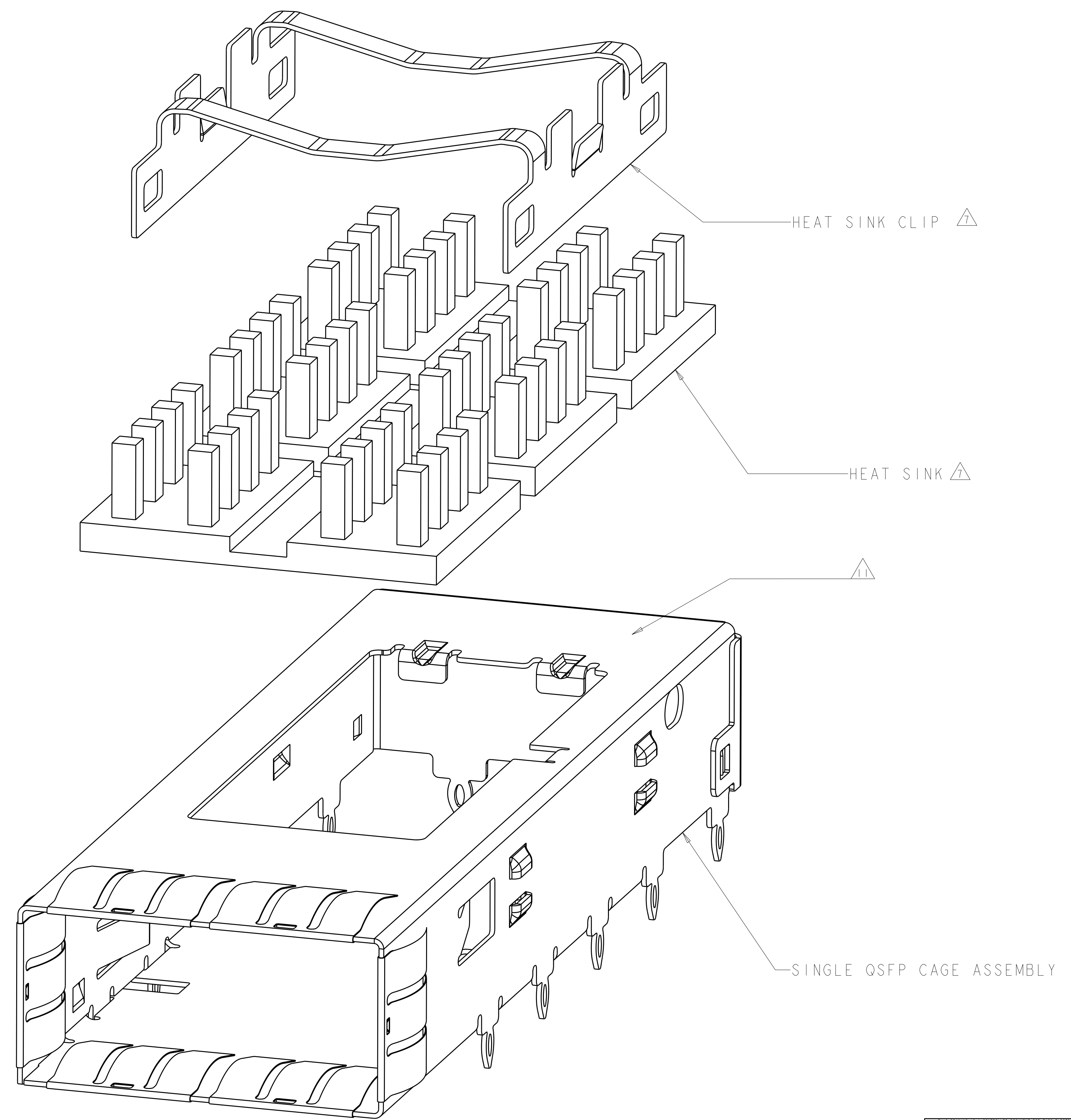
DETAIL J
SCALE 20:1



23.0	NETWORKING HEAT SINK	1888631-3
16.0	SAN HEAT SINK (SHOWN)	1888631-2
13.7	PCI HEAT SINK	1888631-1
A	DESCRIPTION	PART NUMBER

DIMENSIONS: mm 		TOLERANCES UNLESS OTHERWISE SPECIFIED: 9 PLC ± 1 PLC ±0.25 2 PLC ±0.13 3 PLC ± 4 PLC ± ANGLES ± FINISH 12		DWN B MCMASTER DTSEP06 CHK E J BRIGHT DTSEP06 APVD E J BRIGHT DTSEP06 PRODUCT SPEC 108-2286 APPLICATION SPEC 114-13217 WEIGHT CUSTOMER DRAWING		Tyco Electronics Harrisburg, PA 17105-3608 NAME CAGE ASSEMBLY, THRU BEZEL, QSFP, WITH HEAT SINK SIZE CAGE CODE DRAWING NO RESTRICTED TO A 100779 C=1888631 SCALE 4:1 SHEET 1 OF 4 REV B	
-----------------------	--	--	--	--	--	--	--

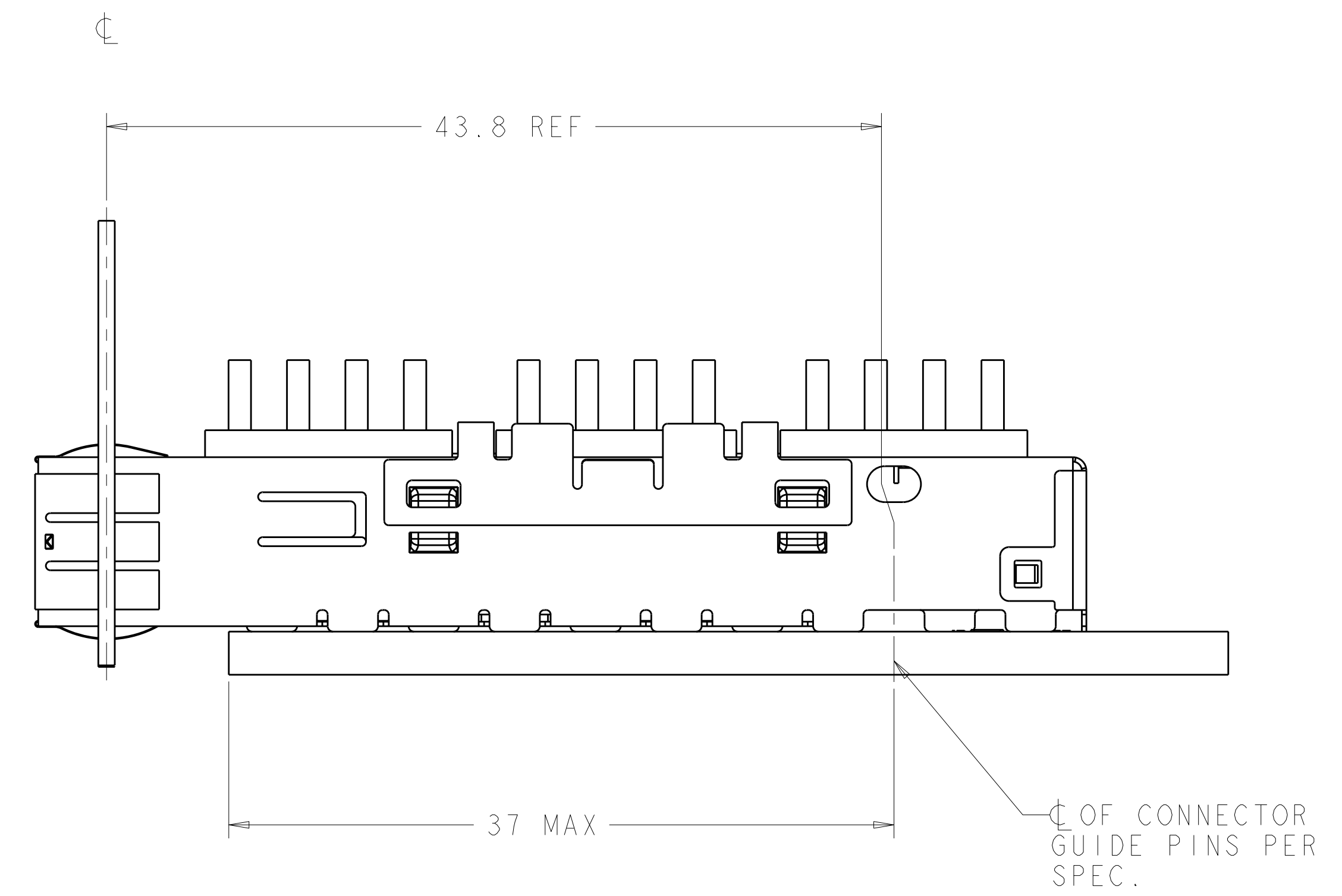
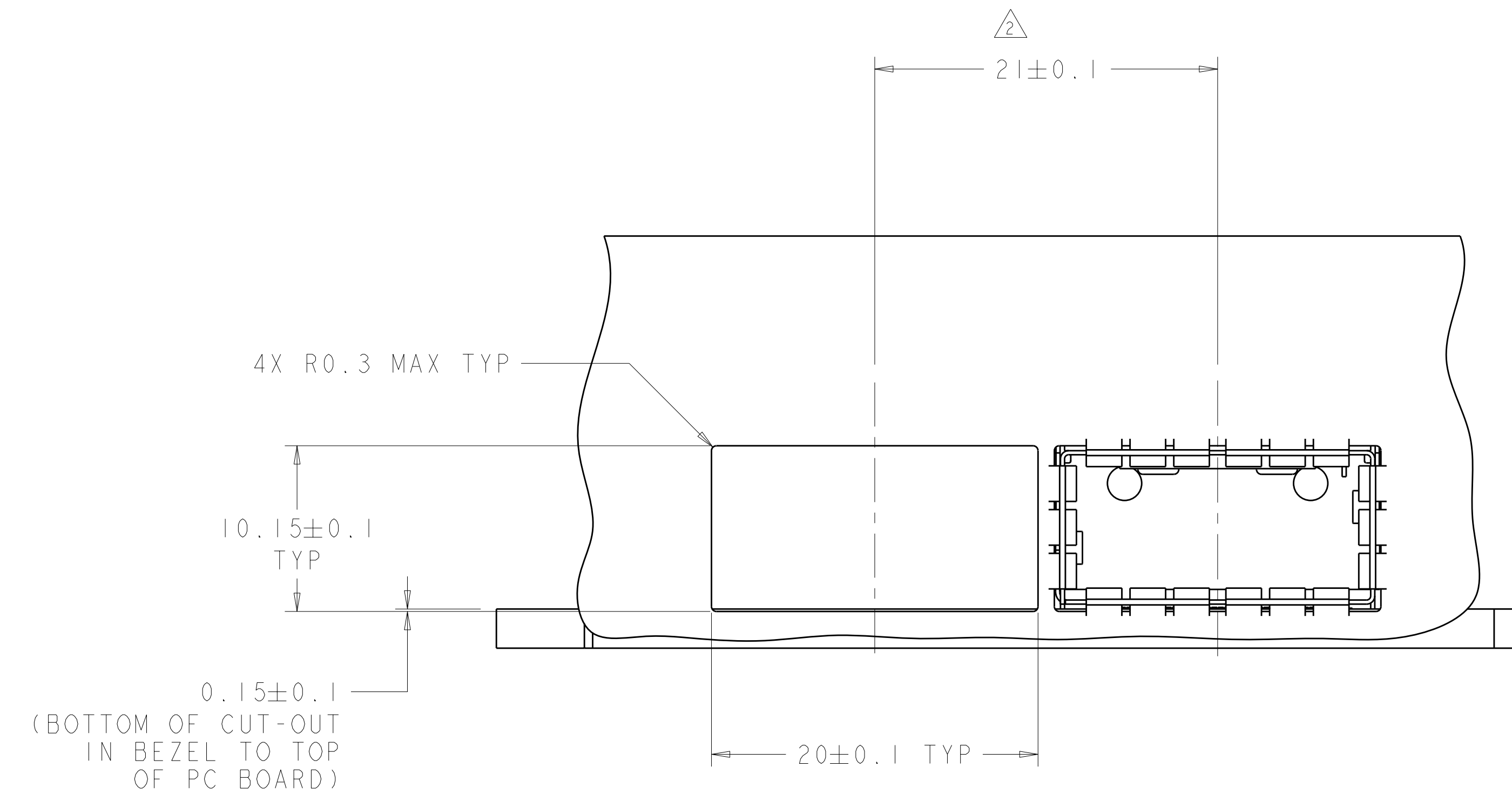
LOC	DIST	REVISIONS			
P	LTB	DESCRIPTION	DATE	DWN	APVD
GP	00	SEE SHEET 1	-	-	-



EXPLODED ASSEMBLY
 SCALE 8:1

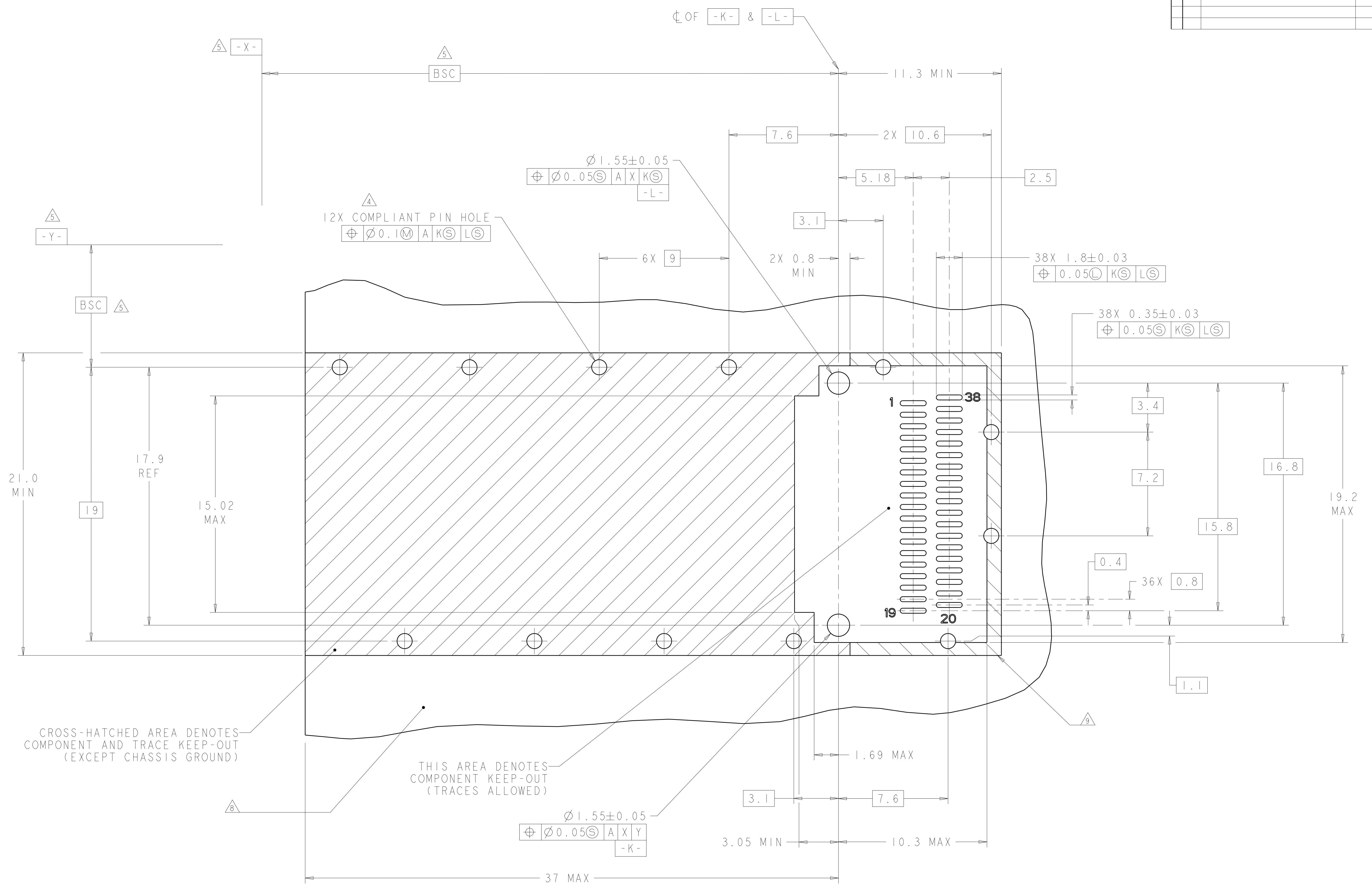
<small>THIS DRAWING IS UNPUBLISHED. RELEASED FOR PUBLICATION 2007. THIS IS SUBJECT TO CHANGE WITHOUT NOTICE AND WITHOUT OBLIGATION. SHOULD BE CONTACTED FOR THE LATEST REVISION.</small>		DWN: B. MCMASTER CHK: E. J. BRIGHT APVD: E. J. BRIGHT	DTSEP06 OTSEP06 OTSEP06	Tyco Electronics Harrisburg, PA 17105-3608
DIMENSIONS: mm	TOLERANCES UNLESS OTHERWISE SPECIFIED: 9 PLC ± 1 PLC ±0.25 3 PLC ±0.13 4 PLC ± ANGLES ± FINISH	PRODUCT SPEC: 108-2286 APPLICATION SPEC: 114-13217 WEIGHT: -	NAME: CAGE ASSEMBLY, THRU BEZEL, QSFP, WITH HEAT SINK SIZE: A CAGE CODE: 100779 DRAWING NO: C-1888631	RESTRICTED TO: - SCALE: 4:1 SHEET: 2 OF 4 REV: B
MATERIAL:		CUSTOMER DRAWING		

LOC	DIST	REVISIONS			
GP	00	REV	DATE	BY	APPD
-	-	SEE SHEET 1	-	-	-



<small>THIS DRAWING IS UNPUBLISHED. RELEASED FOR PUBLICATION 2007. IT IS SUBJECT TO CHANGE WITHOUT NOTICE AND WITHOUT OBLIGATION. SHOULD BE CONTACTED FOR THE LATEST REVISION.</small>		DWN: B. MCMASTER OTSEP06 CHK: E. J. BRIGHT OTSEP06 APVD: E. J. BRIGHT OTSEP06	Tyco Electronics Harrisburg, PA 17105-3608
DIMENSIONS: mm 	TOLERANCES UNLESS OTHERWISE SPECIFIED: 0 PLC ± 1 PLC ±0.25 2 PLC ±0.13 3 PLC ± 4 PLC ± ANGLES ±	PRODUCT SPEC: 108-2286 APPLICATION SPEC: 114-13217 WEIGHT: - FINISH: -	NAME: CAGE ASSEMBLY, THRU BEZEL, QSFP, WITH HEAT SINK SIZE: A 00779 C=1888631 RESTRICTED TO: -
MATERIAL:		CUSTOMER DRAWING	SCALE: 4:1 SHEET 3 OF 4 REV B

LOC	DIST	REV	DATE	BY	APPD
GP	00				
DESCRIPTION			DATE	BY	APPD
SEE SHEET 1					



CROSS-HATCHED AREA DENOTES COMPONENT AND TRACE KEEP-OUT (EXCEPT CHASSIS GROUND)

THIS AREA DENOTES COMPONENT KEEP-OUT (TRACES ALLOWED)

RECOMMENDED PCB LAYOUT
SCALE 8:1

DIMENSIONS:		TOLERANCES UNLESS OTHERWISE SPECIFIED:		DWN		REV	
mm	0.125	PLC	±0.25	B. MCMASTER	0TSEP06	Tyco Electronics	
		PLC	±0.13	E. J. BRIGHT	0TSEP06	Harrisburg, PA 17105-3608	
		PLC	±	E. J. BRIGHT	0TSEP06	NAME	
		PLC	±			CAGE ASSEMBLY, THRU BEZEL, OSFP, WITH HEAT SINK	
		ANGLES	±			SIZE CAGE CODE DRAWING NO	
MATERIAL	FINISH	WEIGHT				RESTRICTED TO	
						A100779C=1888631	
CUSTOMER DRAWING				SCALE	4:1	SHEET	4 OF 4
				REV	B		