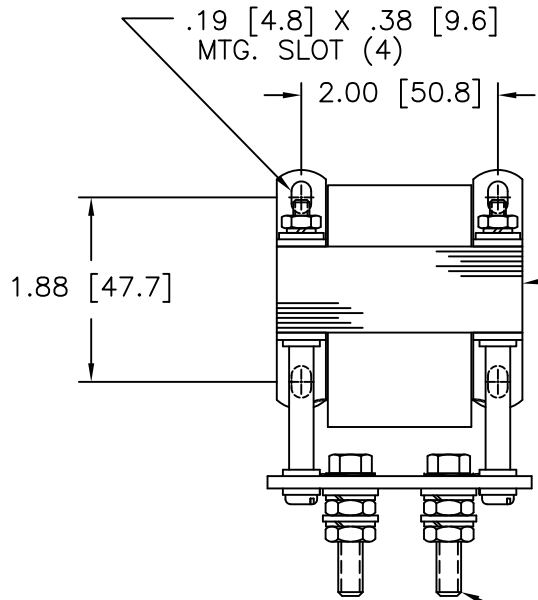
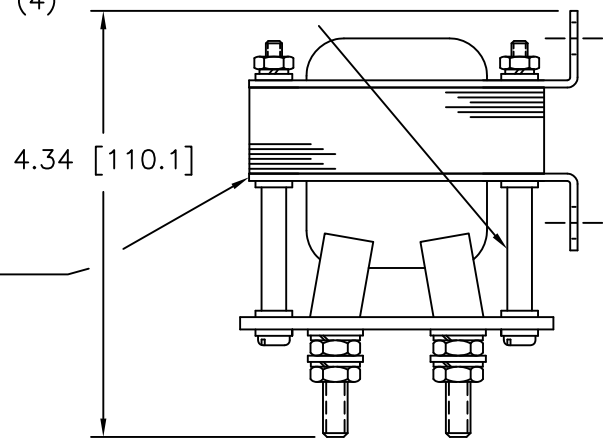


DWG. NO.	850-0180		
DWG. SIZE	C		
REVISIONS			
SYL.	E.C.N.	DATE	APVD.
P	24803	4/10/02	REDRAWN TO CAD
R	24950	9/12/02	REVISED & UPDATED



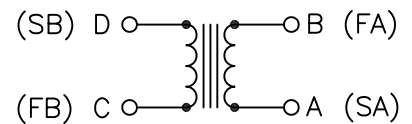
- 620-0908 SPACER (4)
- 596-0229-N6 #8-32 X 3 PHSMS (4)
- 732-0545-N6 #8 FWS (16)
- 732-0351-N6 #8 SLWS (4)
- 472-0101-N6 #8-32 HMSNS (4)



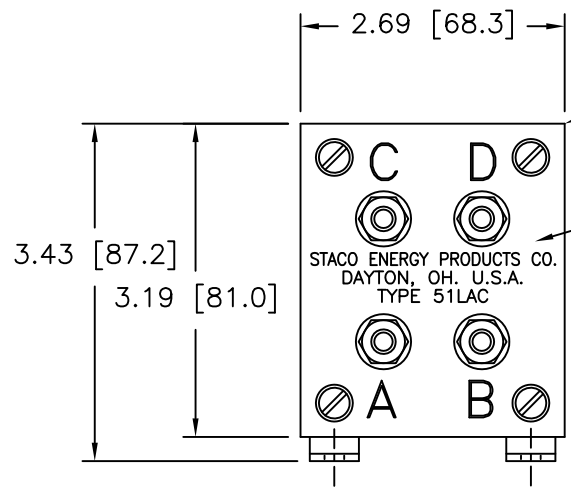
023-1488 CHOKE AS PUR.  
273-0234 AS MOD. - PROC.

657-0018-C7 BRACKET (4)

- 596-2145-N6 1/4-20 X 1-1/4 HHSMS (4)
- 472-0163-N6 1/4-20 HMSNS X .156 THK. (8)
- 732-0381-N6 1/4 SLWS (8)
- 732-0565-N6 #12 FWS (8)

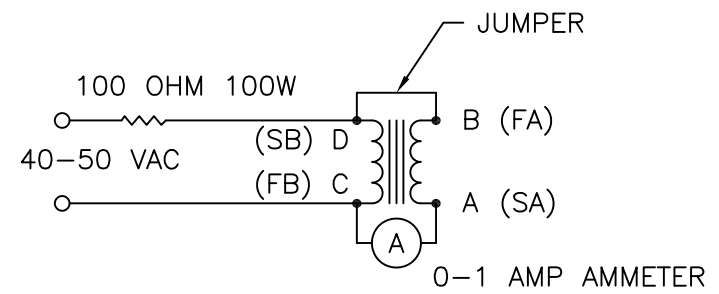


SCHEMATIC




682-0375 TERMINAL BOARD

639-1240 SCREEN



TEST CIRCUIT

READ APPROX. 0.2 AMPERES BETWEEN "C" AND "D" IF THE START AND FINISH OF EITHER WINDING IS REVERSED THE AMMETER WILL READ ZERO

UNLESS OTHERWISE SPECIFIED, TOLERANCE IS ±		UNITS		TITLE:											
DECIMALS	Holes	ANGLES	DRAFT	IN [mm]				OUTLINE CHOKE TYPE: 51LAC							
.XX	.0005	1°	1-1/2°	MATERIAL:		DRAWN BY TIM RAU									
ALL DIMENSIONS APPLY AFTER PLATING				DATE		FIRST USED ON		DO NOT SCALE DWG.							
The information and design disclosed herein was originated by and is the property of STACO ENERGY PRODUCTS CO., which reserves all patent, proprietary, design, manufacturing, reproduction, use and sole rights thereto, and to any article disclosed therein except to the extent rights are expressly granted to others. The foregoing does not apply to vendor proprietary parts.				CHECKER		DATE		WEIGHT APPROX.		CAGE CODE		DWG. SIZE			
				ENGINEER		DATE		SCALE		SHEET 1 OF 1		DWG. NO.		850-0180	
								1=1				C			