

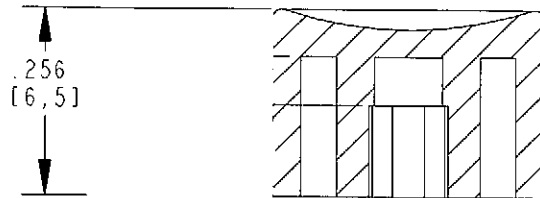
ENG112D

DWG. NO. 38HH2042-X

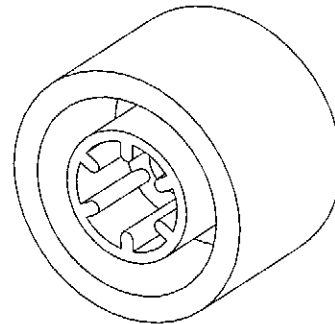
PART NUMBER COLOR SELECTION  
 EXAMPLE: 38HH2042-2

MODEL #	COLOR
38HH2042-	1 = WHITE
	2 = BLACK
	3 = RED
	4 = ORANGE
	5 = YELLOW
	6 = GREEN
	7 = BLUE
	8 = BROWN
	9 = GRAY

ALL REVISIONS TO THIS DRAWING  
 MUST BE MADE ON THE PRO/E SYSTEM



NOTES:  
 1. CAPS FIT SUB-MINIATURE PUSHBUTTON SWITCHES GRAYHILL SERIES 38C,



ISSUE	APP/DATE	DESCRIPTION
REVISIONS		
<i>Grayhill</i>		GRAYHILL, INC. 561 HILLGROVE AVE. LA GRANGE, IL 60525 PHONE (708) 354-1040
UNLESS OTHERWISE SPECIFIED TOLERANCES AND DIMENSIONS ARE IN INCHES LINEAR ± REF. DIAMETERS ± REF. ANGULAR ± REF. LIMITS APPLY BEFORE FINISHING DO NOT SCALE THIS PRINT		
CRITICAL CHARACTERISTIC FLAGS PER GRAYHILL SPEC. SOP2338		
	--	CRITICAL CHARACTERISTIC FLAG
	--	Cpk REQUIRED
	--	S.P.C. FLAG (CONTROL CHART REQ'D ON FEATURE SPECIFIED)
FINISH	NONE	APPROVED DATE PR 10-23-06
MATERIAL	NYLON	CHECKED DATE CWS 10-23-06
NAME	BUTTON CAP	DRAWN DATE CMC 10-23-06
CAGE NO.	81073	38HH2042-X
A SIZE	DWG. NO. 38HH2042-X	ISSUE A
SCALE 4.000	SHEET	OF 1

ALL DIMENSIONS ARE FOR REFERENCE ONLY.