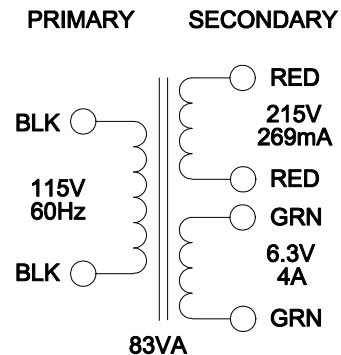
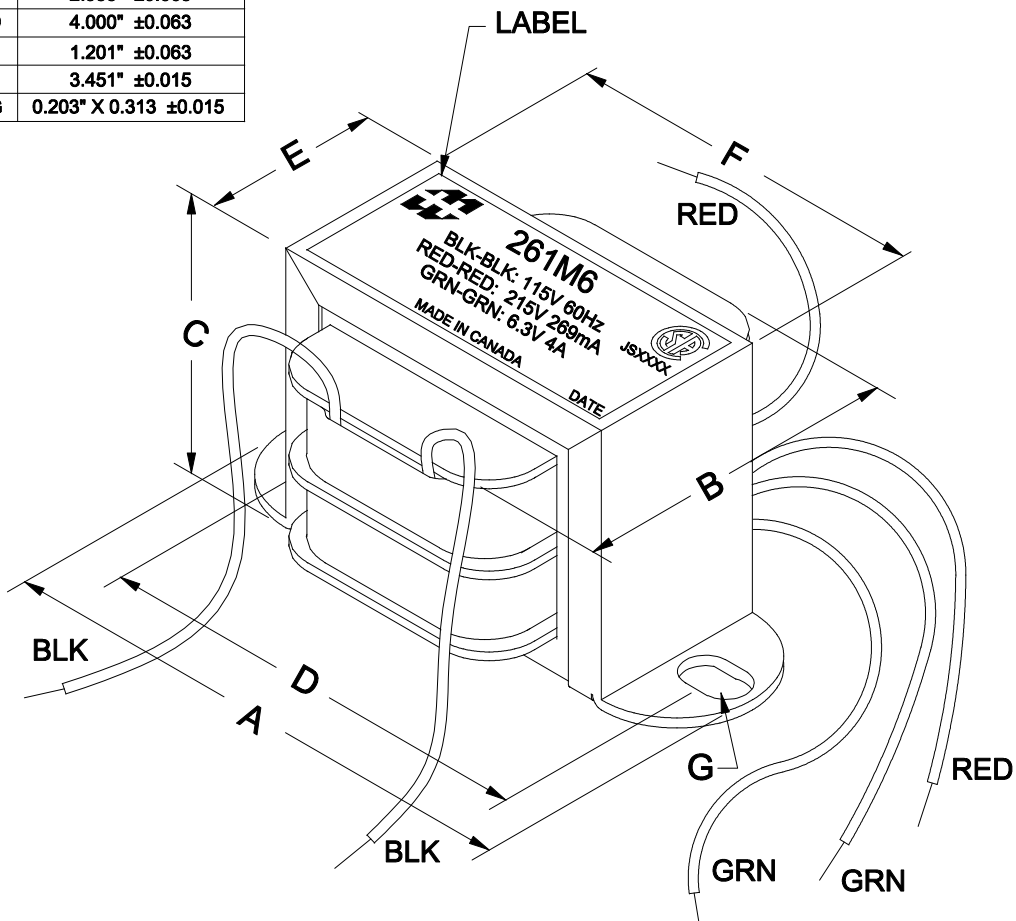


DIMENSIONS:	
A	4.500" ±0.063
B	2.470" ±0.125
C	2.933" ±0.063
D	4.000" ±0.063
E	1.201" ±0.063
F	3.451" ±0.015
G	0.203" X 0.313 ±0.015



NOTE: ALL LEADS 6" OUT MIN. STRIPPED 0.5"

ELECTRICAL DATA:		
TESTS	CONDITIONS	ACCEPTANCE CRITERIA
I <sub>ex</sub>	@ 115V, 60Hz, BLK - BLK	226mA Max.
Sec. N.L.V	@ 115V, 60Hz, BLK - BLK	
	RED - RED =	225.9V ±2%
	GRN - GRN =	6.662V ±2%
DCR	@ 20°C, BLK - BLK =	3.288 Ω ±20%
	@ 20°C, RED - RED =	19.10 Ω ±20%
	@ 20°C, GRN - GRN =	0.042 Ω ±20%
HIPOT	PRIMARY - SECONDARY	2000V, 60Hz, 1 SEC

REV.#	REVISION	DATE	HAMMOND ELECTRONIC DIVISION		
0	RELEASED. C.I.	04/30/15	MANUFACTURING™ 52 RANKIN PLACE, WATERLOO, ONTARIO, N2J 3Z5		
			DWG. BY: C. ILIE	CHK'D BY:	TITLE: POWER TRANSFORMER
			DATE: 04/30/15	APP'D. BY:	DWG. NO. 261M6
				DIMENSIONS: IN(X) MM( )	

PH # (519) 886-6181  
FAX # (519) 886-9540