

AMPHENOL PART NUMBER CONFIGURATION
 UX75 - A 20 - X 0 0 X T

SFP RECEPTACLE
 U75 = NON-RoHS
 UE75 = RoHS COMPLIANT

CONTACT PLATING
 (FOR U75 NON-RoHS)
 1 = PLATING OPTION 1 (SEE MATERIAL NOTES)
 4 = PLATING OPTION 4 (SEE MATERIAL NOTES)
 (FOR UE75 RoHS)
 2 = PLATING OPTION 2 (SEE MATERIAL NOTES)
 3 = PLATING OPTION 3 (SEE MATERIAL NOTES)
 5 = PLATING OPTION 5 (SEE MATERIAL NOTES)
 6 = PLATING OPTION 6 (SEE MATERIAL NOTES)

LUBRICANT OPTION ON MATING AREA
 0 = NO
 1 = YES

REVISIONS				
SYM	ZONE	ECN, ERN NO.	DATE	APPRD.
K		UPDATED MATERIAL FOR HOUSING	MAY29/07	J.S.
L		UPDATED	APR16/08	A.G.
M		UPDATED	MAR 14/11	J.S.
N		UPDATED	NOV 21/11	J.S.
P		UPDATED	JUL 16/12	J.S.

THIS IS A CAD DRAWING. DO NOT MANUALLY REVISE.

MATERIAL NOTES:

PLASTIC HOUSING:
 HIGH TEMPERATURE LCP
 FLAMMABILITY RATING UL94V-0.

CONTACTS:

PHOSPHOR BRONZE
PLATING OPTION 1: (U75 ONLY)
 30µ" [0.76 µm] MIN. GOLD ON MATING AREA AND 150-300 µ" (3.81-7.62 µm) MIN. TIN/LEAD (90/10) PLATING ON TERMINATION OVER 50µ" [1.27 µm] MIN. NICKEL UNDER LAYER.
PLATING OPTION 2: (RoHS FOR UE75 ONLY)
 30µ" [0.76 µm] MIN. GOLD ON MATING AREA AND 2 µ" (0.05 µm) GOLD FLASH PLATING ON TERMINATION OVER 50µ" [1.27 µm] MIN. NICKEL UNDER LAYER.
PLATING OPTION 3: (RoHS FOR UE75 ONLY)
 30µ" [0.76 µm] MIN. GOLD ON MATING AREA AND 150-300 µ" (3.81-7.62 µm) MIN. LOW WHISKER MATTE TIN PLATING ON TERMINATION OVER 50µ" [1.27 µm] MIN. NICKEL UNDER LAYER.
PLATING OPTION 4: (FOR U75 ONLY)
 15µ" [0.38 µm] MIN. GOLD ON MATING AREA AND 150-300 µ" (3.81-7.62 µm) MIN. TIN/LEAD (90/10) PLATING ON TERMINATION OVER 50µ" [1.27 µm] MIN. NICKEL UNDER LAYER.
PLATING OPTION 5: (RoHS FOR UE75 ONLY)
 15µ" [0.38 µm] MIN. GOLD ON MATING AREA AND 2 µ" (0.05 µm) GOLD FLASH PLATING ON TERMINATION OVER 50µ" [1.27 µm] MIN. NICKEL UNDER LAYER.
PLATING OPTION 6: (RoHS FOR UE75 ONLY)
 15µ" [0.38 µm] MIN. GOLD ON MATING AREA AND 150-300 µ" (3.81-7.62 µm) MIN. LOW WHISKER MATTE TIN PLATING ON TERMINATION OVER 50µ" [1.27 µm] MIN. NICKEL UNDER LAYER.
LUBRICANT OPTION: LUBRICANT CAN BE ADDED ON THE CONTACTS MATING AREA (SEE P/N FOR THE OPTION)

PACKAGING:
 TAPE AND REEL.

TEMPERATURE RANGE:
 -40°C TO +85°C

DRAWN	J.SI	DATE	2005/03/08
DESIGNED	J.SI	DATE	2005/03/08
CHECKED	X		X
I. E. APPRD.			
Q. A. APPRD.			

Amphenol Canada Corp.

TITLE
 SFP 20 POSITION HIGH SPEED CONNECTOR RECEPTACLE FIXED BOARD, RIGHT ANGLE SMT OPTIONAL PLATING AND LUBRICANT ON MATING

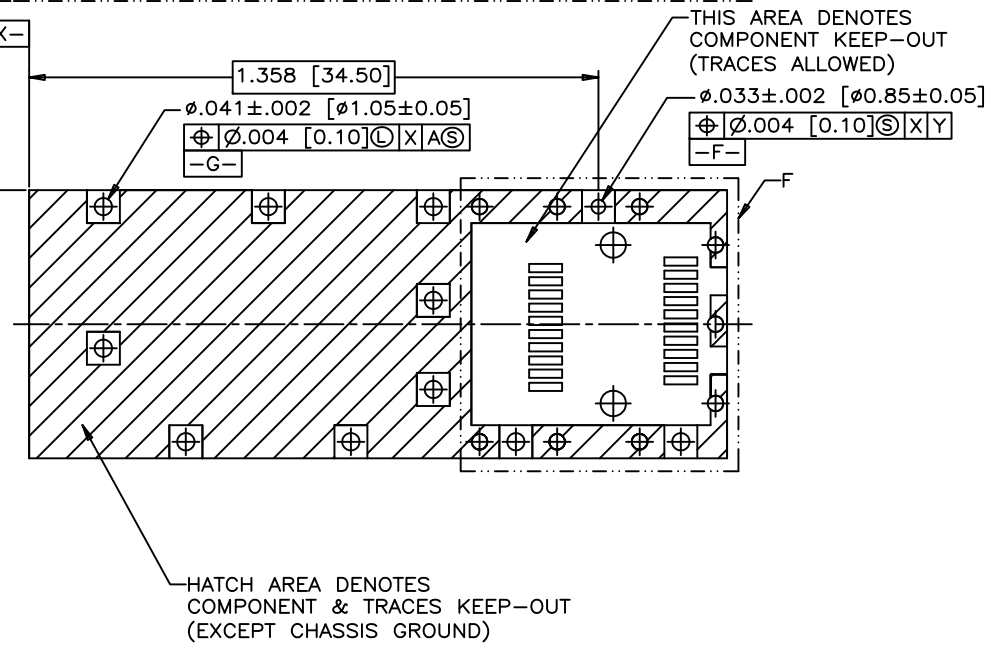
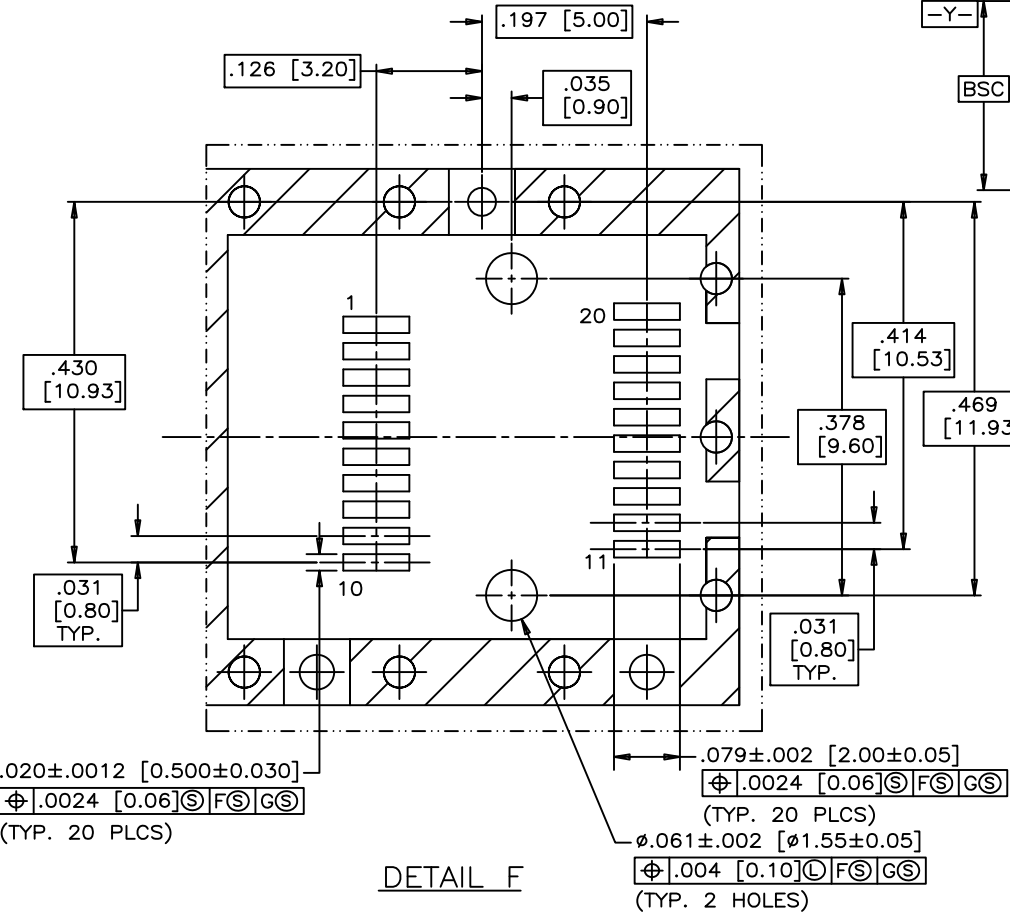
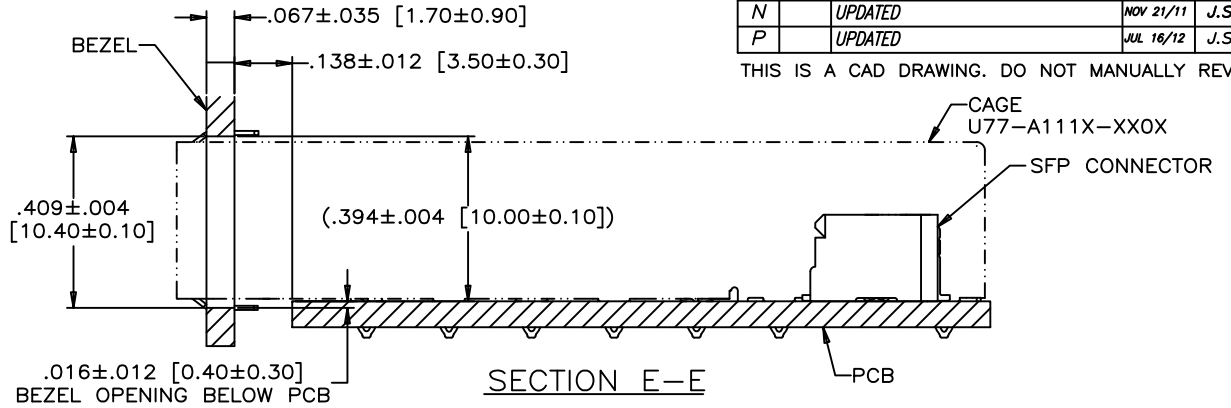
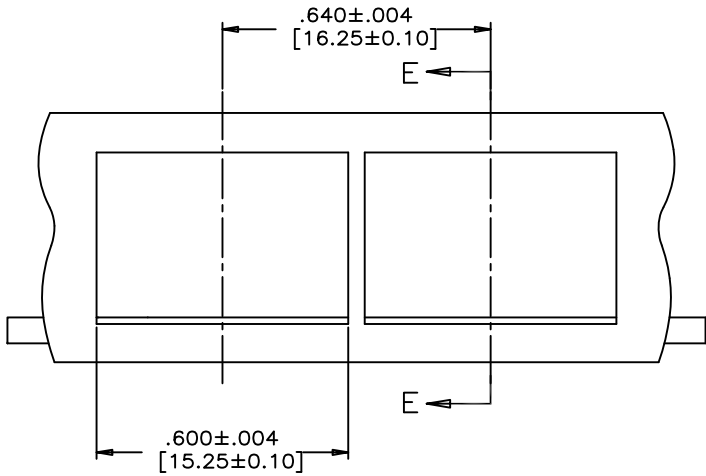
GENERAL TOLERANCES		DWG. APPRD.	
DECIMALS	INCH	MILLIMETERS	ENG. REL. NO.
	X.XX±0.010	X.X±0.25	REF.
	X.XXX±0.006	X.XX±0.15	X
ANGLES	X°±1'	DIMENSIONS ARE IN INCHES [mm]	CODE ID. NO. 03554
	X.X°±0.5'		

DWG	A	DRAWING NO.	P-UX75-A20-X00XX	REV.	P
SCALE	4/1	WT.	-----	SURF.	-----
			SHEET	1 OF 3	

THIS DOCUMENT CONTAINS PROPRIETARY INFORMATION AND SUCH INFORMATION MAY NOT BE DISCLOSED TO OTHERS FOR ANY PURPOSE OR USED FOR MANUFACTURING PURPOSES WITHOUT WRITTEN PERMISSION FROM AMPHENOL CANADA CORP.

REVISIONS				
SYM	ZONE	ECN, ERN NO.	DATE	APPRD.
K		UPDATED MATERIAL FOR HOUSING	MAY29/07	J.S.
L		UPDATED	APR16/08	A.G.
M		UPDATED	MAR 14/11	J.S.
N		UPDATED	NOV 21/11	J.S.
P		UPDATED	JUL 16/12	J.S.

THIS IS A CAD DRAWING. DO NOT MANUALLY REVISE.



DRAWN	J.SI	DATE	2005/03/08
DESIGNED	J.SI	DATE	2005/03/08
CHECKED	X		
APPROVED			

Amphenol Canada Corp.
 TITLE
 SFP 20 POSITION HIGH SPEED CONNECTOR RECEPTACLE FIXED BOARD, RIGHT ANGLE SMT
 OPTIONAL PLATING AND LUBRICANT ON MATING

GENERAL TOLERANCES		DWG. APPRD.	DWG. NO.	SCALE	WT.	SURF.	SHEET
DECIMALS	X.XX±0.010 X.XXX±0.006	X.X±0.25 X.XX±0.15	ENG. REL. NO.	2/1			3
ANGLES	X°±1° X.X°±0.5°		DIMENSIONS ARE IN INCHES [mm]				
			REF. X				
			CODE ID. NO. 03554				

THIS DOCUMENT CONTAINS PROPRIETARY INFORMATION AND SUCH INFORMATION MAY NOT BE DISCLOSED TO OTHERS FOR ANY PURPOSE OR USED FOR MANUFACTURING PURPOSES WITHOUT WRITTEN PERMISSION FROM AMPHENOL CANADA CORP.

