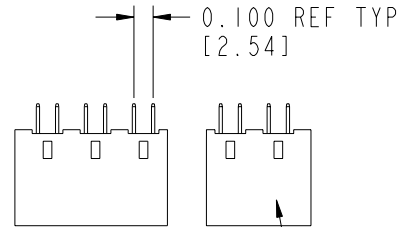


Tous droits strictement reserves. Reproduction ou communication a des tiers interdite sous quelque forme que ce soit sans autorisation écrite du propriétaire. Propriete de c FCI. Droits de reproduction FCI.

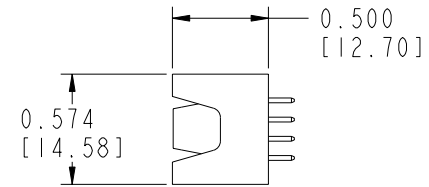
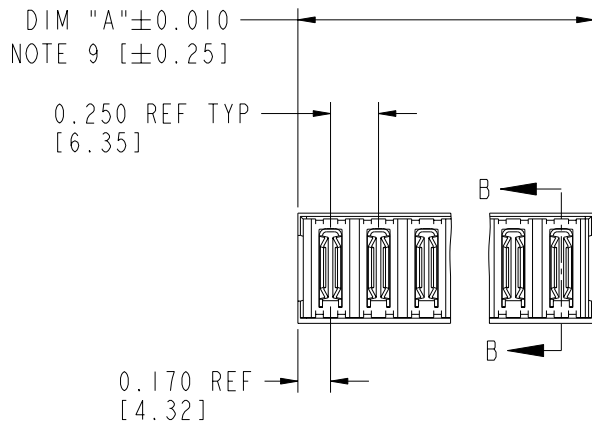


All rights strictly reserved. Reproduction or issue to third parties in any form whatever is not permitted without written authority from the proprietor. Property of FCI. Copyright FCI.

PRODUCT NUMBER
51707-ABB00000EF__ NOTE: 3
SEE NOTE 1



SEE NOTE 8



mat'l code				SEE NOTE 2				tolerances unless otherwise specified				CUSTOMER		FCI		www.fciconnect.com	
ltr	ecn no.	dr	date	linear	.XX±.01/.X±0.3				COPY		projection		title				
A	V11842	JRW	07-17-01		.XXX±.005/.XX±0.13				A				VERTICAL HEADER w/o GUIDE PIN POWER				
B	V12500	DAI	10-16-01	angles	.XXXX±.0020/.XXX±.051				INCH/MM		product family		code				
C	V12513	DAI	11-07-01		0°±2°						PWRBLADE		213				
D	V21104	TAB	09-30-02	dr	JRW	10-16-01	scale		1:1		size		sheet				
E	DG06-0475	JULIA	11-15-06	engr	J. ALLISON	10-16-01					A		51707		1 of 3		
sheet index				revision sheet	E	E	E										
				1	2	3											

Pro/E

cage code 22526

PDM: Rev:E

STATUS: Released

Printed: Dec 20, 2010

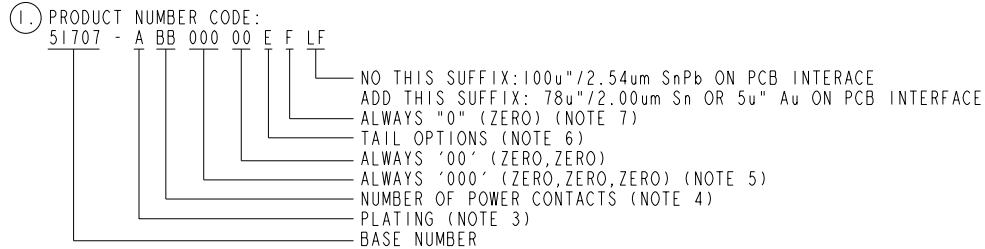
Tous droits strictement réservés. Reproduction ou communication a des tiers interdite sous quelque forme que ce soit sans autorisation écrite du propriétaire. Propriété de c FCI. Droits de reproduction FCI.



All rights strictly reserved. Reproduction or issue to third parties in any form, whenever is not permitted without written authority from the proprietor. Property of FCI. Copyright FCI.

PRODUCT NUMBER	DIM	LENGTH FORMULAS (SEE NOTE 9)
51707-ABB00000EF__ NOTE: 3	DIM "A"	.250 [6.35] x BB + .090 [2.29] (NOTE 9)
SEE NOTE 1	DIM "F"	.250 [6.35] x BB + .120 [3.05]

CONNECTOR NOTES:



- ②. HOUSING MATERIAL: UL94 V-0 HIGH GLASS FILLED TEMP THERMO PLASTIC
POWER CONTACT MATERIAL: COPPER ALLOY
- ③. 51707-1BB00000EF;51707-1BB00000EFLF;51707-3BB00000EFLF PLATING SPEC.
SEE PRINT:10064183
- ④. POWER CONTACTS, 01 TO 20 AVAILABLE.
MAXIMUM OF 20 POWER CONTACTS PER CONNECTOR
- ⑤. THIS PART IS NOT AVAILABLE WITH SIGNAL CONTACTS.
- ⑥. TAIL OPTIONS:
A = 0.135 +0.015/-0.010 [3.43 +0.38/-0.25] SOLDER TO BOARD
B = 0.165 +0.015/-0.010 [4.19 +0.38/-0.25] SOLDER TO BOARD
C = 0.165 +0.015/-0.010 [4.19 +0.38/-0.25] PRESS FIT

- ⑦. BOARD RETENTION NOT AVAILABLE WITH GUIDELESS ENDS.
 - ⑧. MANUFACTURE'S NAME, P/N, AND DATE CODE TO APPEAR ON THIS SURFACE.
 - ⑨. THE MAXIMUM OVERALL LENGTH (DIM A) OF A PART IS 8.00 [203.2]
 - 10. PRODUCT SPECIFICATION GS-12-149
 - 11. SEE PWRBLADE VERTICAL HEADER SPECIAL WORKSHEET (51696) FOR MATING LENGTH OPTIONS.
 - 12. DIMENSIONS AND TOLERANCES ARE IN ACCORDANCE WITH ASME Y14.5M, 1994 UNLESS OTHERWISE
- PCB NOTES:
- 13. ALL DIMENSIONS ARE BASIC UNLESS OTHERWISE SPECIFIED.
 - 14. ALL THROUGH HOLES ARE LOCATED WITH A TRUE POSITION OF 0.004 [0.10]
 - 15. ALL HOLE DIAMETERS ARE FINISHED HOLE SIZE.
 - 16. $\varnothing 0.0453 \pm 0.0010$ [1.151 ± 0.025] DRILLED HOLES PLATED WITH 0.0003 [0.008] MIN SnPb OVER 0.001 [0.03] TO 0.003 [0.08] Cu PLATING TO ACHIEVE A $\varnothing 0.040 \pm 0.003$ [1.02 ± 0.07] HOLE.
 - 17. FOR PRESS FIT APPLICATION USE FCI CAM TOOL 430169-XXX.

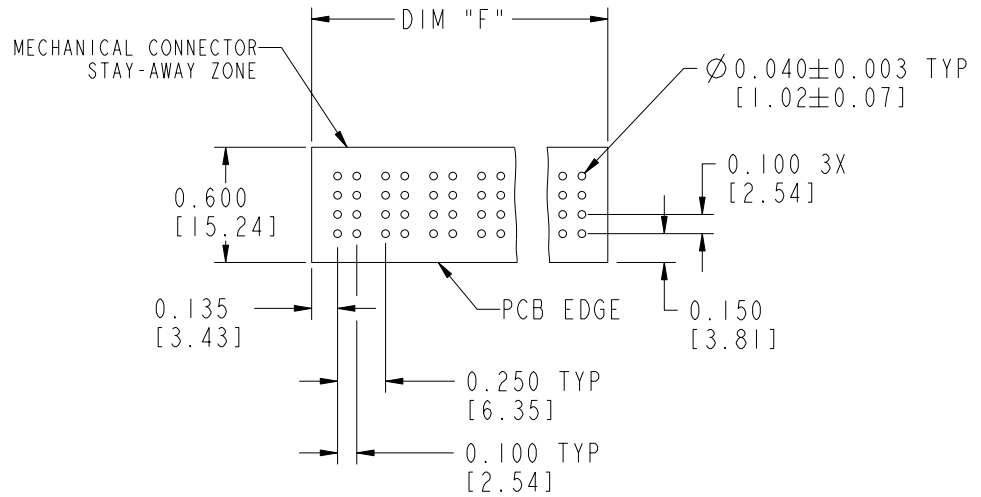
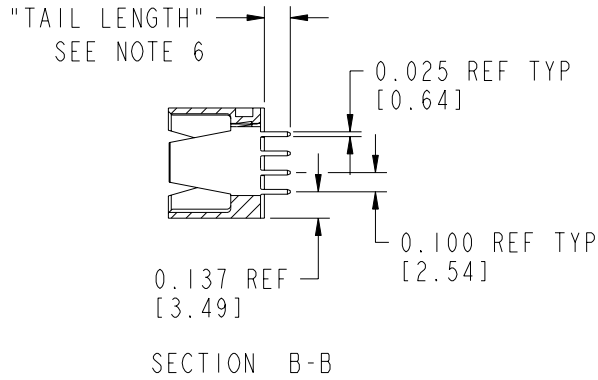
mat'l code				SEE NOTE 2		tolerances unless otherwise specified		CUSTOMER		FCI www.fciconnect.com	
ltr	ecn no.	dr	date	linear	.XX±.01/.X±0.3		COPY		title	VERTICAL HEADER w/o GUIDE PIN POWER	
E					.XXX±.005/.XX±0.13		projection				
				angles	.XXX±.0020/.XXX±.051		INCH/MM		product family		code
				dr	JRW	10-16-01	←→		PWRBLADE		213
				engr	J.ALLISON	10-16-01	scale		size		sheet
				chr	J.ALLISON	10-16-01	3:2		A		2
				appd	J.ALLISON	10-16-01			51707		
sheet index	revision sheet										

Tous droits strictement réservés. Reproduction ou communication a des tiers interdite sous quelque forme que ce soit sans autorisation écrite du propriétaire. Propriété de c FCI. Droits de reproduction FCI.



All rights strictly reserved. Reproduction or issue to third parties in any form whatever is not permitted without written authority from the proprietor. Property of FCI. Copyright FCI.

PRODUCT NUMBER
51707-ABB00000EF__
NOTE: 3
SEE NOTE 1



RECOMMENDED PCB LAYOUT

mat'l code				SEE NOTE 2		tolerances unless otherwise specified		CUSTOMER		FCI		www.fciconnect.com		
ltr	ecn no.	dr	date	linear	.XX±.01/.X±0.3		COPY		projection	title			VERTICAL HEADER w/o GUIDE PIN POWER	
E					.XXX±.005/.XX±0.13		INCH/MM			product family		code		
					.XXX±.0020/.XXX±.051		←→			PWRBLADE		213		
				angles	0°±2°		scale		size		dwg no		sheet	
				dr	JRW	10-16-01	1:1		A		51707		3	
				enr	J. ALLISON	10-16-01								
				chr	J. ALLISON	10-16-01								
				appd	J. ALLISON	10-16-01								
sheet index		revision sheet												

cage code 22526

Pro/E

PDM: Rev:E

STATUS: Released

Printed: Dec 20, 2010