



MICRO SWITCH

FREEPORT, ILLINOIS, U.S.A.
A DIVISION OF HONEYWELL

FED. MFG. CODE 91929

SWITCH-BASIC

CATALOG LISTING

YZ-2RW812-A2

AYF2000

YZ-2RW812-A2
PAGE 1 OF 1

M

DRAWING NUMBER

ISSUE 11

REPLACES

RELEASE NO.

CHECK

09JAN06

RJ

CHECK

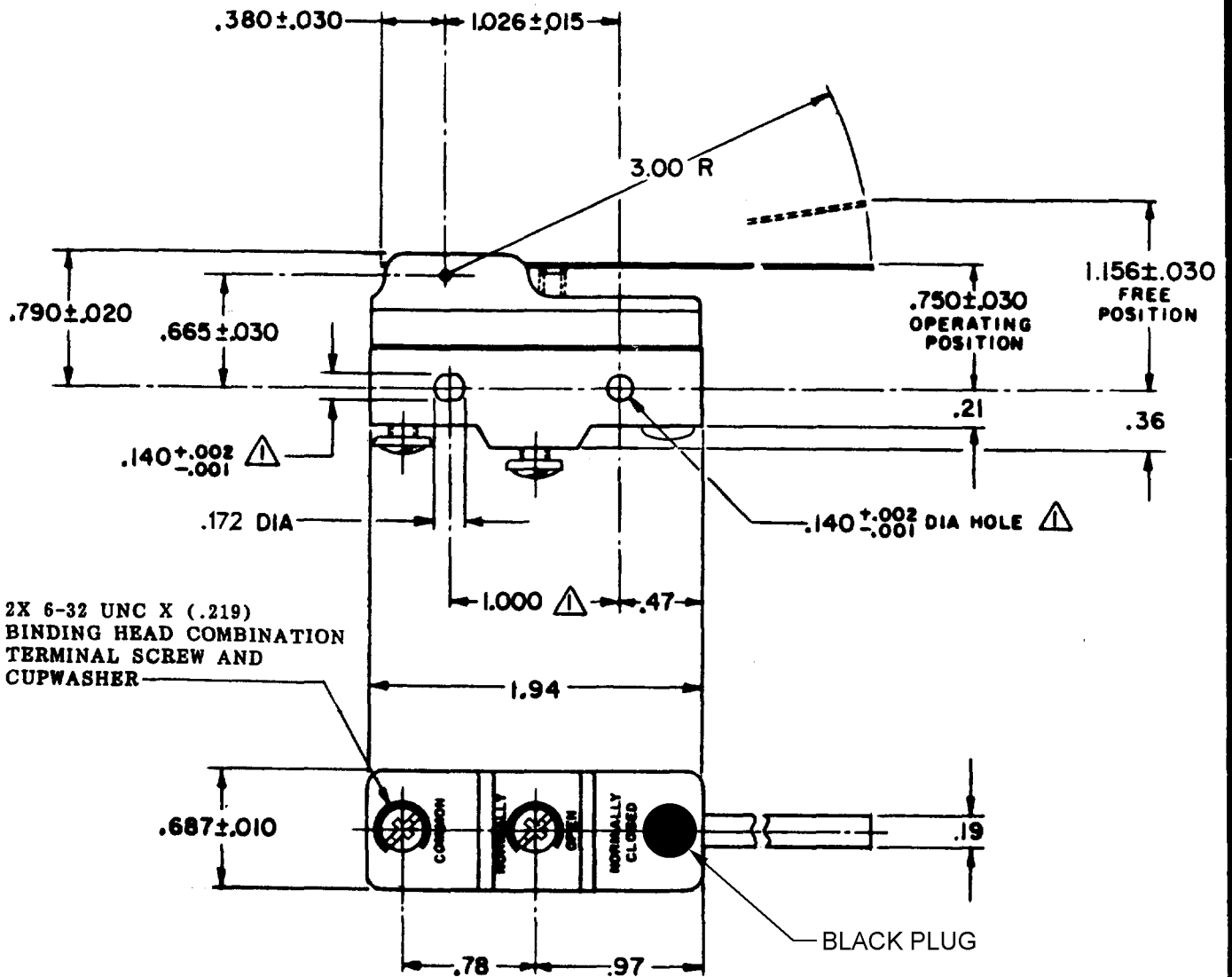
03

RAW

CHECK

63

RAW



2X 6-32 UNC X (.219)
BINDING HEAD COMBINATION
TERMINAL SCREW AND
CUPWASHER

BLACK PLUG

NOTE
▲ MOUNTING HOLES WILL ACCEPT PINS OR SCREWS
OF .139 MAX DIA ON 1.000 ±.002 CENTERS

THIS DRAWING COVERS A PROPRIETARY ITEM AND IS THE PROPERTY OF MICRO SWITCH, A DIVISION OF MINNEAPOLIS-HONEYWELL REGULATOR CO. THIS DRAWING IS NOT TO BE COPIED OR USED WITHOUT THE APPROVAL OF MICRO SWITCH.

CHARACTERISTICS

OPERATING FORCE-----3/4 - 2 1/4 OZ

RELEASE FORCE-----1/4 OZ MIN

DIFFERENTIAL TRAVEL-----.009-.060

OVERTRAVEL-----.266 MIN

ELECTRICAL DATA

CONTACT ARRANGEMENT

S P N O

-L95- 1/2 A-125, 250, OR 400 VAC
1/2 A-125 VDC, 1/4 A-250 VDC
1/8 HP-125 VAC; 1/4 HP-250 VAC

-L288-
-L306-
-L315-



16A 250V ~ T85 5E4

SCALE FULL

DO NOT SCALE PRINT

UNLESS OTHERWISE NOTED
DIMENSIONS ARE IN INCHES
TOLERANCES ARE:

| | | |
|-------------|--------|-------|
| ONE PLACE | (.0) | ±.030 |
| TWO PLACE | (.00) | ±.015 |
| THREE PLACE | (.000) | ±.005 |
| ANGLES | | ± |

WEIGHT .073 LB

RASTER

DRAWN

L E B 3 OCT 63 CHECK

REVISIONS

| | | | |
|---|---------|-----|-----------|
| A | CO17262 | LEB | 06 OCT 83 |
| B | 73287-J | JAL | 22 NOV 93 |
| C | 77588 | KDR | 29 MAR 94 |
| D | CO93346 | DLT | 22 SEP 98 |
| E | 0000677 | JLH | 25 JUL 03 |
| F | 0017586 | TSG | 09 JAN 06 |