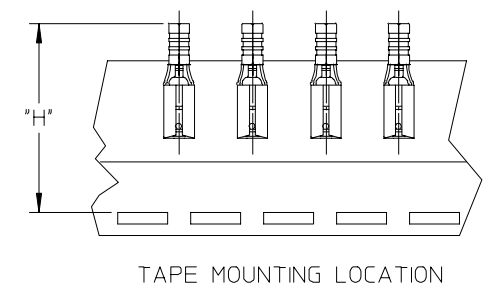
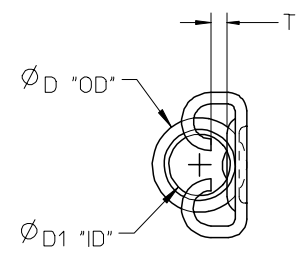
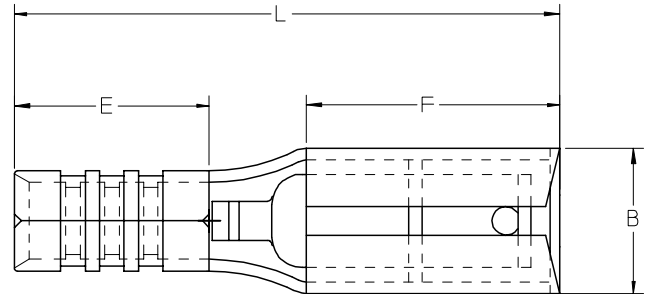


MATERIAL NUMBER	ENGINEERING NUMBER	WIRE RANGE AWG	TAPED MATERIAL NUMBER	TAPED ENGINEERING NUMBER	T	B	F	L	E	D1	D	H
					MAX	MAX	MIN	MAX	MIN	MIN	MAX	NOMINAL
192030373	192030373	16-14	192030467	192030373T	.030/1.75	.239/6.06	.252/6.40	.587/14.92	.173/4.40	.083/2.10	.138/3.50	1.184/30.07
192030390	192030390	16-14	192030469	192030390T	.030/1.75	.302/7.66	.307/7.80	.666/16.92	.173/4.40	.083/2.10	.138/3.50	1.184/30.07
192030379	192030379	12-10	192030468	192030379T	.030/1.75	.302/7.66	.307/7.80	.706/17.92	.213/5.40	.130/3.30	.185/4.70	1.235/31.37



NOTE(S):
 1. MATERIAL: STEEL .016/0.40 THICK REF.
 2. FINISH: NICKEL PLATED
 3. PART IS ROHS COMPLIANT.
 4. AMBIENT OPERATING TEMPERATURE UP TO 900 °F (483 °C).

ADDED OPERATING TEMP	2007/03/13
EC NO: ETC2007-0297	2007/03/13
DRW: NEHLE	2007/03/13
CHKD: JMACNEIL	2007/03/13
APPR: JMACNEIL	2007/03/14

QUALITY SYMBOLS	DESCRIPTION
$\nabla=0$	
$\nabla=0$	

GENERAL TOLERANCES (UNLESS SPECIFIED)	
	INCH
4 PLACES	± .005
3 PLACES	± .004
2 PLACES	± .003
1 PLACE	± .002
ANGULAR ± .005°	
DRAFT WHERE APPLICABLE MUST REMAIN WITHIN DIMENSIONS	

DIMENSION STYLE	
IN/MM	
DRAWN BY	DATE
ASAYDEH	05/12/02
CHECKED BY	DATE
R DEROSS	05/12/02
APPROVED BY	DATE
R DEROSS	05/12/02
MATERIAL NO.	SEE CHART

SCALE	DESIGN UNITS	THIRD ANGLE PROJECTION
1:1	INCH	
TITLE		
KRIPTITE QUICK DISCONNECT, STEEL, 900 DEG F (483 DEG C)		
MOLEX INCORPORATED		
MATERIAL NO.	DOCUMENT NO.	SHEET NO.
SEE CHART	SD-19203-025	1 OF 1
THIS DRAWING CONTAINS INFORMATION THAT IS PROPRIETARY TO MOLEX INCORPORATED AND SHOULD NOT BE USED WITHOUT WRITTEN PERMISSION		