

CODE	DIM "M" MATING LENGTH	CONTACT TYPE
PA	[N/A]	POWER
E	[6.86]	SIGNAL
HA	[N/A]	HOLD-DOWN

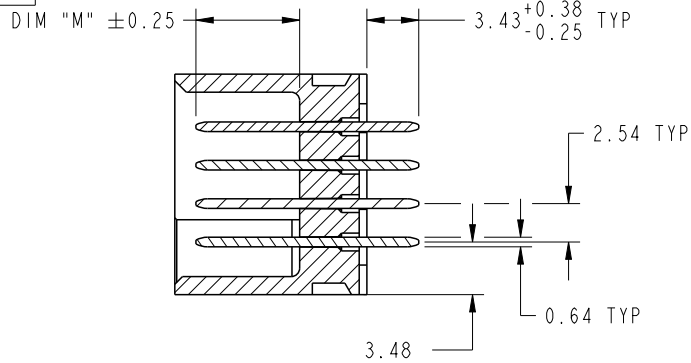
spec ref	See Notes			dr	Luo Weller	2013/09/20	projection 	MM 	size	A4	scale	1:1	
tolerance std	TOLERANCES UNLESS OTHERWISE SPECIFIED			eng	Luo Weller	2013/10/16			ecn no	-			
See Notes				chr	-	-			rel level	Released			
surface	linear	0.X	±0.50	www.fci.com	FCj	title	6P+20S	dwg no	51952-263	rev	A	sheet 1 of 4	
		0.XX	±0.25										cat. no.
	angular	0°	±2°										



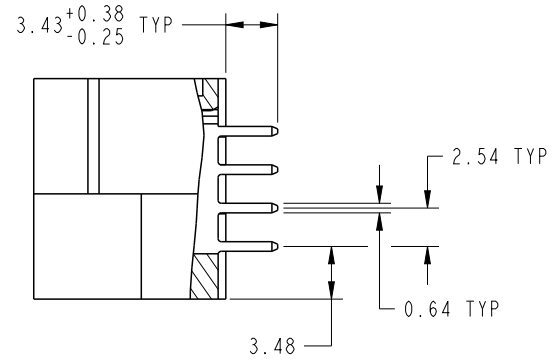
Copyright FCI.

PrdE File - REV C - 2009-06-09

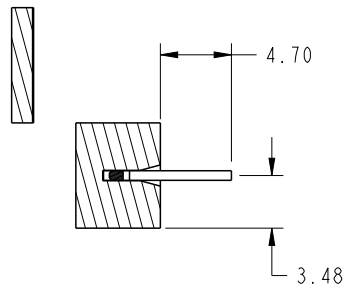
PRODUCT NUMBER
51952-263--
NOTE 3



SECTION A-A
SCALE 2:1



SECTION B-B
SCALE 2:1

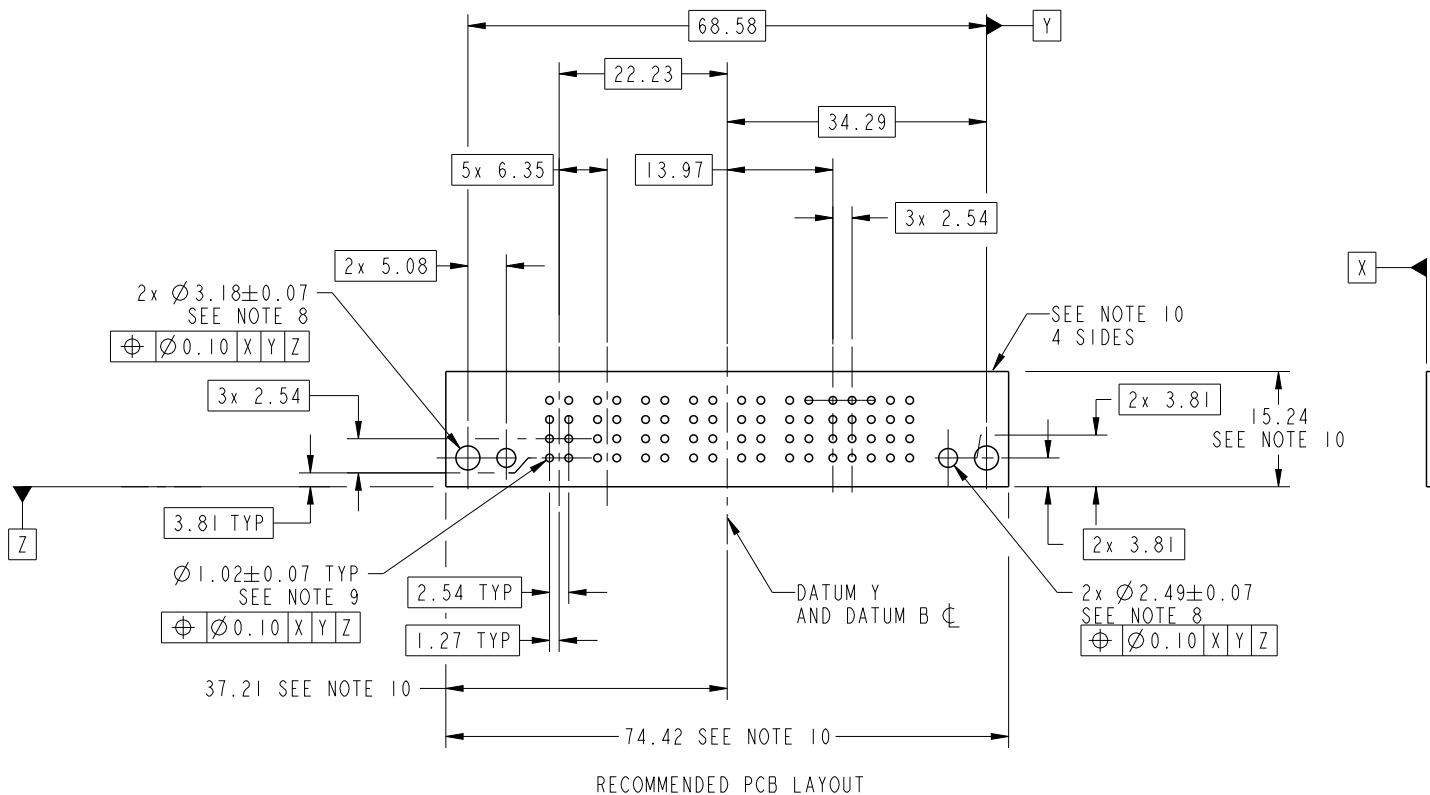


SECTION C-C
SCALE 2:1

dr	Luo Weller	2013/09/20	projection 	MM 	size	A4	scale	1:1	
eng	Luo Weller	2013/10/16			ecn no	-			
chr	-	-			rel level	Released			
appr	Pei-Ming Zheng	2013/10/16	product family	PwrBlade					
	title	6P+20S VERTICAL SOLDER HEADER			dwg no	51952-263		rev	A
www.fci.com	cat. no.	&model_name	Product - Customer Drw		sheet 2 of 4				

PRODUCT NUMBER

51952-263__
NOTE 3



Copyright FCI.

dr	Luo Weller	2013/09/20	projection 	MM 	size	A4	scale	1:1	
eng	Luo Weller	2013/10/16			ecn no	-			
chr	-	-			rel level	Released			
appr	Pei-Ming Zheng	2013/10/16	product family	PwrBlade					
		title	6P+20S VERTICAL SOLDER HEADER		dwg no	51952-263		rev	A
www.fci.com		cat. no.	&model_name	Product - Customer Drw		sheet 3 of 4			

PRODUCT NUMBER

51952-263__
NOTE 3

NOTES:

1. DIMENSIONS AND TOLERANCES ARE IN ACCORDANCE WITH ASME Y14.5M, 1994 UNLESS OTHERWISE SPECIFIED.

CONNECTOR NOTES:

- ② HOUSING MATERIAL: UL 94 V-0 GLASS FILLED HIGH-TEMP THERMOPLASTIC
POWER CONTACT MATERIAL: COPPER ALLOY
SIGNAL PIN MATERIAL: COPPER ALLOY
- 3. SEE ITEM 1 & 2 IN PRINT 10064183 FOR PLATING SPEC OF 51952-263 AND 51952-263LF RESPECTIVELY.
- ④ MANUFACTURER'S NAME, DATE CODE AND OPTIONAL P/N TO APPEAR ON THIS SURFACE. THE MARK CAN BE OMITTED IF THERE IS NOT ENOUGH SPACE ON THIS SURFACE.
- 5. PRODUCT SPECIFICATION GS-12-149.
APPLICATION SPECIFICATION BUS-20-067.

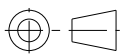
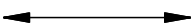

6. PACKAGED IN TRAYS.

PCB NOTES:

- 7. ALL HOLE DIAMETERS ARE FINISHED HOLE SIZE.
- 8. MOUNTING HOLES, WHERE APPLICABLE, ARE UNPLATED.

⑨ $\varnothing 1.151 \pm 0.025$ DRILLED HOLES PLATED WITH 0.008 MIN SnPb OR Sn OVER .001 [0.03] TO 0.08 Cu PLATING TO ACHIEVE $\varnothing 1.02 \pm 0.07$ HOLE.

⑩ CONNECTOR KEEP-OUT ZONE.

dr	Luo Weller	2013/09/20	projection 	MM 	size	A4	scale	1:1			
eng	Luo Weller	2013/10/16			ecn no	-					
chr	-	-			product family	PwrBlade	rel level	Released			
appr	Pei-Ming Zheng	2013/10/16			title	6P+20S		dwg no	51952-263	rev	A
www.fci.com		cat. no.	&model_name	Product - Customer Drw			sheet 4 of 4				



Copyright FCI.