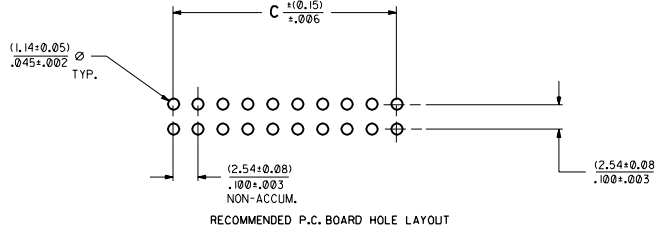
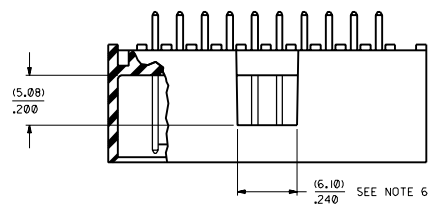
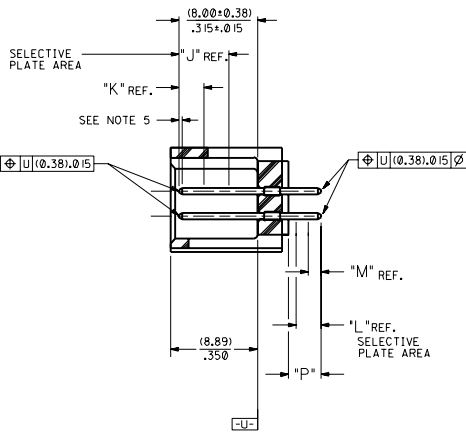
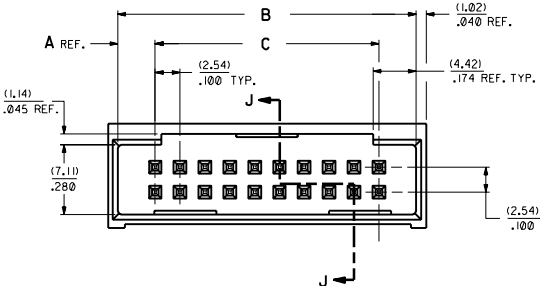




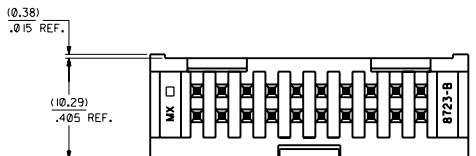
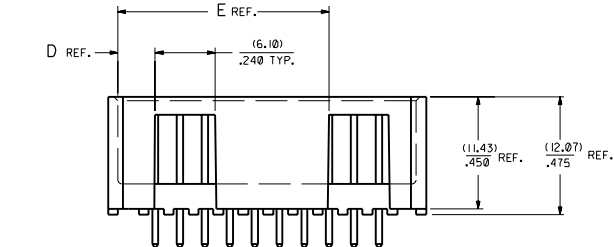
20 19 18 17 16 15 14 13 12 11 10 9 8 7 6 5 4 3 2 1



RECOMMENDED P.C. BOARD HOLE LAYOUT



SECTION J-J



CKT.	DIM. 'A'	DIM. 'B'	DIM. 'C'	DIM. 'D'	DIM. 'E'
06	(3.81) ±.150	(12.70) ±.500	(5.08) ±.200	(3.81) ±.150	
08	(3.81) ±.150	(15.24) ±.600	(7.62) ±.300	(3.81) ±.150	
10	(3.81) ±.150	(17.78) ±.700	(10.16) ±.400	(6.35) ±.250	
12	(3.81) ±.150	(20.32) ±.800	(12.70) ±.500	(6.35) ±.250	
14	(3.81) ±.150	(22.86) ±.900	(15.24) ±.600	(8.89) ±.350	
16	(3.81) ±.150	(25.40) ±.1000	(17.78) ±.700	(8.89) ±.350	
18	(3.81) ±.150	(27.94) ±.1100	(20.32) ±.800	(11.43) ±.450	
20	(3.81) ±.150	(30.48) ±.1200	(22.86) ±.900	(3.81) ±.150	(21.59) ±.850
22	(3.81) ±.150	(33.02) ±.1300	(25.40) ±.1000	(3.81) ±.150	(24.13) ±.950
24	(3.81) ±.150	(35.56) ±.1400	(27.94) ±.1100	(3.81) ±.150	(26.67) ±.1050
26	(3.81) ±.150	(38.10) ±.1500	(30.48) ±.1200	(3.81) ±.150	(29.21) ±.1150
28	(3.81) ±.150	(40.64) ±.1600	(33.02) ±.1300	(3.81) ±.150	(31.75) ±.1250
30	(3.81) ±.150	(43.18) ±.1700	(35.56) ±.1400	(3.81) ±.150	(34.29) ±.1350
32	(3.81) ±.150	(45.72) ±.1800	(38.10) ±.1500	(3.81) ±.150	(36.83) ±.1450
34	(3.81) ±.150	(48.26) ±.1900	(40.64) ±.1600	(3.81) ±.150	(39.37) ±.1550
36	(3.81) ±.150	(50.80) ±.2000	(43.18) ±.1700	(3.81) ±.150	(41.91) ±.1650
38	(3.81) ±.150	(53.34) ±.2100	(45.72) ±.1800	(3.81) ±.150	(44.45) ±.1750
40	(3.81) ±.150	(55.88) ±.2200	(48.26) ±.1900	(3.81) ±.150	(46.99) ±.1850
42	(3.81) ±.150	(58.42) ±.2300	(50.80) ±.2000	(3.81) ±.150	(49.53) ±.1950
44	(3.81) ±.150	(60.96) ±.2400	(53.34) ±.2100	(3.81) ±.150	(52.07) ±.2050
46	(3.81) ±.150	(63.50) ±.2500	(55.88) ±.2200	(3.81) ±.150	(54.61) ±.2150
48	(3.81) ±.150	(66.04) ±.2600	(58.42) ±.2300	(3.81) ±.150	(57.15) ±.2250
50	(3.81) ±.150	(68.58) ±.2700	(60.96) ±.2400	(3.81) ±.150	(59.69) ±.2350
52	(3.81) ±.150	(71.12) ±.2800	(63.50) ±.2500	(3.81) ±.150	(62.23) ±.2450
54	(3.81) ±.150	(73.66) ±.2900	(66.04) ±.2600	(3.81) ±.150	(64.77) ±.2550
56	(3.81) ±.150	(76.20) ±.3000	(68.58) ±.2700	(3.81) ±.150	(67.31) ±.2650
58	(3.81) ±.150	(78.74) ±.3100	(71.12) ±.2800	(3.81) ±.150	(69.85) ±.2750
60	(3.81) ±.150	(81.28) ±.3200	(73.66) ±.2900	(3.81) ±.150	(72.39) ±.2850
62	(3.81) ±.150	(83.82) ±.3300	(76.20) ±.3000	(3.81) ±.150	(74.93) ±.2950
64	(3.81) ±.150	(86.36) ±.3400	(78.74) ±.3100	(3.81) ±.150	(77.47) ±.3050
66	(3.81) ±.150	(88.90) ±.3500	(81.28) ±.3200	(3.81) ±.150	(80.01) ±.3150
68	(3.81) ±.150	(91.44) ±.3600	(83.82) ±.3300	(3.81) ±.150	(82.55) ±.3250
70	(3.81) ±.150	(93.98) ±.3700	(86.36) ±.3400	(3.81) ±.150	(85.09) ±.3350
72	(3.81) ±.150	(96.52) ±.3800	(88.90) ±.3500	(3.81) ±.150	(87.63) ±.3450

NOTES:

- 1- 20 CIRCUIT SIZE SHOWN FOR ILLUSTRATION PURPOSES.
- 2- PIN PUSHOUT FORCE: (17.79 N)/4 LBS.
- 3- PINS MUST MEET SOLDERABILITY SPEC. MIL-STD-202 METHOD 208B.
- 4- FOR CHARTED DIMENSIONS AND ASSEMBLY N.O.S. NOT SHOWN ON THIS SHEET - SEE SHEET 4.
- 5- ROW TO ROW PIN HEIGHT VARIATION MUST NOT EXCEED (0.13) ±.005 IN.
- 6- WINDOW NOT AVAILABLE ON 6 AND 8 CIRCUIT SIZE.
- 7- PRODUCT CONFORM TO PS-8723.

MATERIAL:

SHROUDED WAFER: 30% G.F. POLYESTER, 94V-0; COLOR: BLACK.  
 PINS: PHOS. BRONZE 510,  
 SEE SHEET 4 FOR FINISHES.

ASSEMBLY STYLES "C" AND "D"

R2	SEE SHEET 1
R	SEE SHEET 1
P	SEE SHEET 1
O	SEE SHEET 1
N	SEE SHEET 1

DIMENSIONS SHOWN UNLESS OTHERWISE SPECIFIED IN PARENTHESES ARE IN INCHES

PLATE	±.005	---
PLATE	±.01	±.013
PLATE	---	±.025

DATE: 10/15/82  
 SCALE: 4:1

MFG. | SH. | REV. | LTR. | REVISIONS

TITLE: SALES ASSEMBLY  
 WAFER-STRAIGHT MT. FULLY SHROUDED  
 .100 GRID-FOR USE W/ .025 SQ. PINS  
 WITH .150 END WALLS

MOLEX INCORPORATED  
 SHEET NO. 3  
 DATE: 92/07/17

SEE CHART SDA-8723-\*\*\*\*\*

DA D

