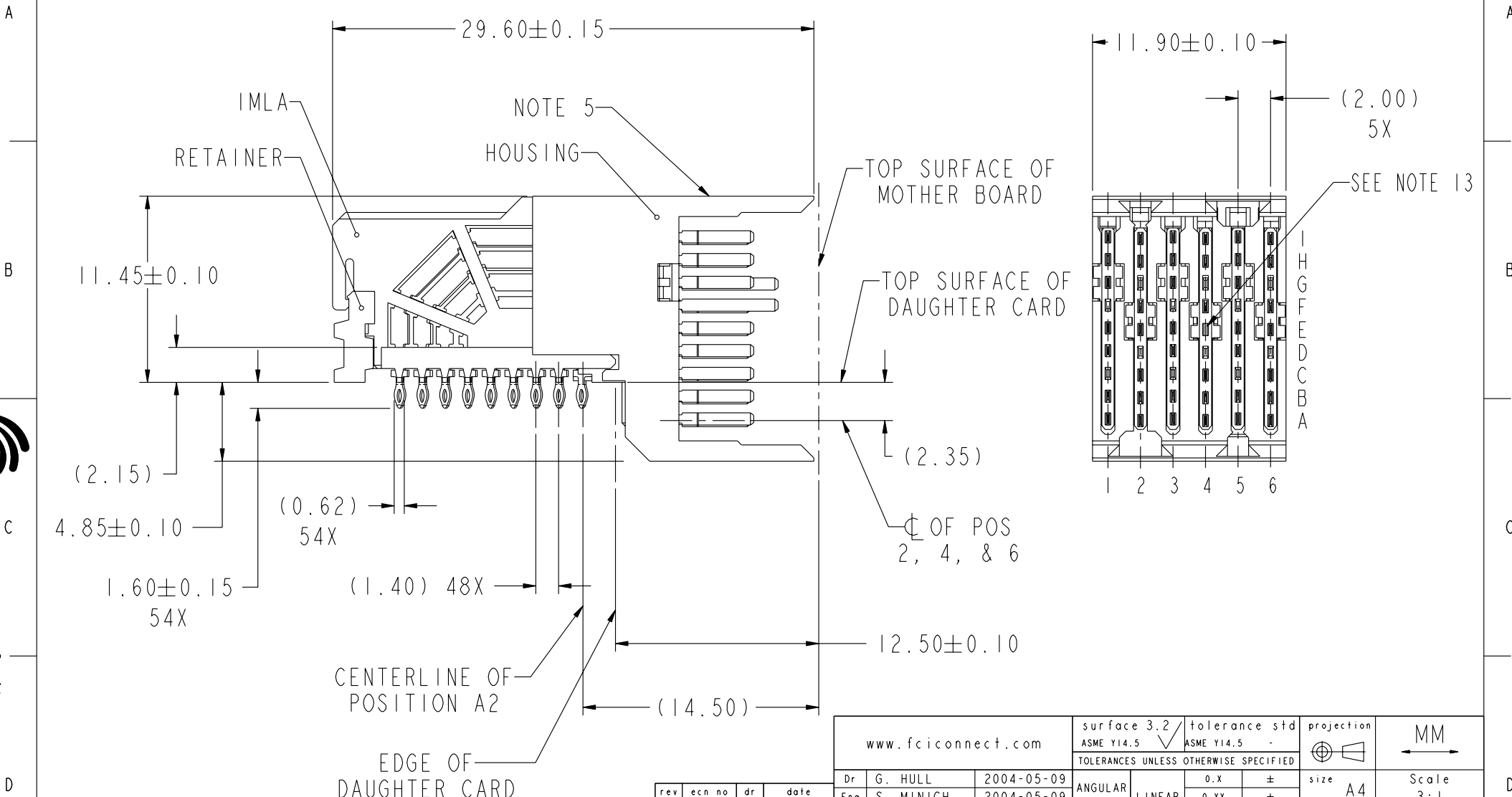


PRODUCT NUMBER
SEE TABLE, SHEET 5



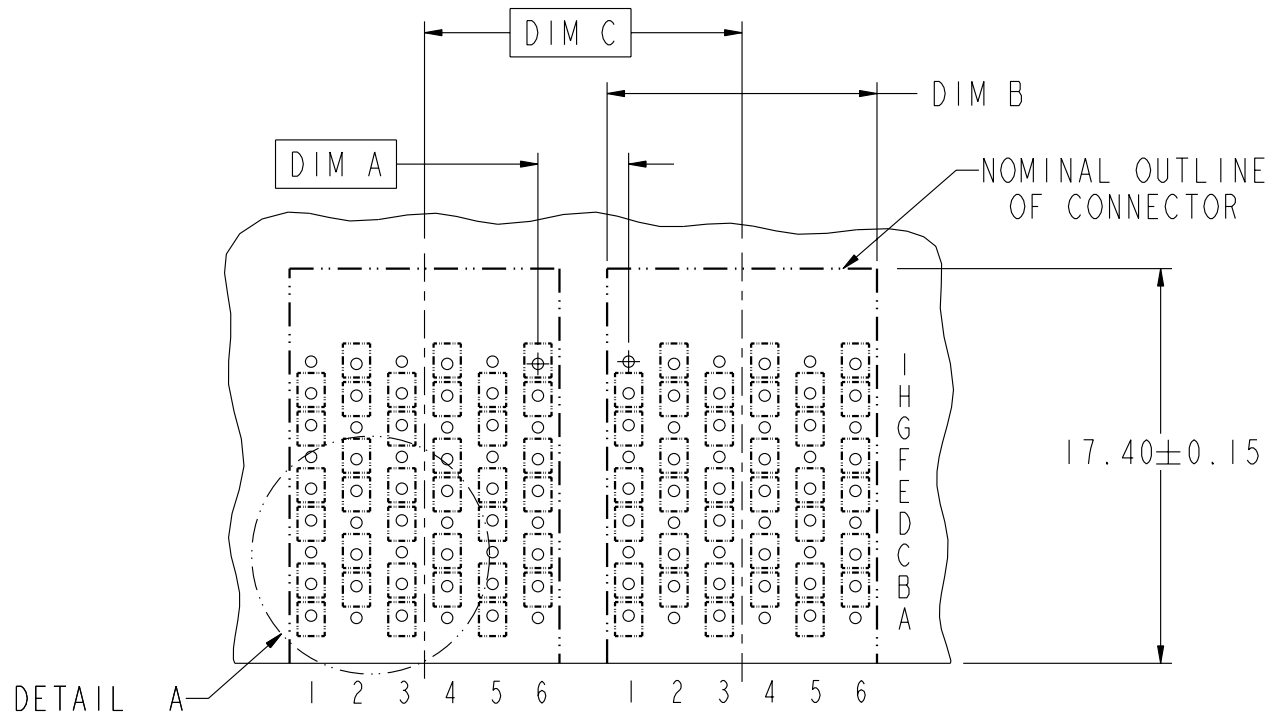
Copyright FCI.

rev	ecn no	dr	date
A	V05-0461	LRJ	2006-02-24
B	V06-0209	LRJ	2006-03-01
C	V06-0531	SCS	2006-06-07
D	S06-0374	DG	2006-12-21
-	-	-	-
-	-	-	-
-	-	-	-

www.fciconnect.com		surface 3.2 ASME Y14.5	tolerance std ASME Y14.5	projection MM
Dr	G. HULL	2004-05-09	ANGULAR	size A4
Eng	S. MINICH	2004-05-09	LINEAR	Scale 3:1
Chr	C. H. TAN	2006-12-21	0° ±°	ECN ***
Appr	JOEY NG	2006-12-21	Product family AirMax VS Spec ref	
FCI		AirMax VS R/A HEADER ASSY		Rev. D
		PRESS-FIT, 54 POS, 12MM		dwg no 10040862
		catalog no	CUSTOMER	sheet 1 of 5

REV F - 2006-04-17

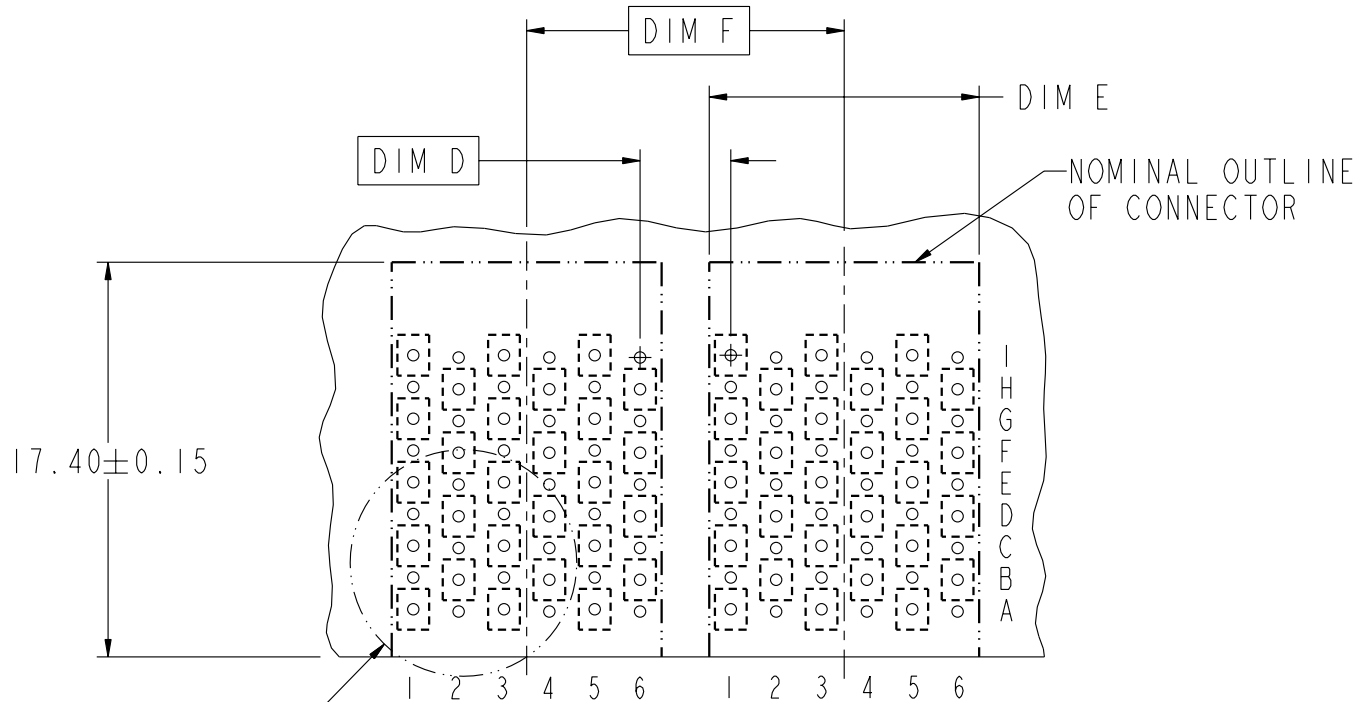
DESCRIPTION	DIM A	DIM B	DIM C
2-12MM MODULES PLACED END-TO-END	2.00	11.90 2X	12.00
1-12MM MODULE & 1-14MM MODULE PLACED END-TO-END	3.00	11.90 1X & 13.90 1X	13.00



RECOMMENDED PCB LAYOUT
FOR DIFFERENTIAL APPLICATIONS
COMPONENT SIDE
(TWO ADJACENT FOOTPRINTS SHOWN)
NOTES 6 & 7

	title AirMax VS R/A HEADER ASSY PRESS-FIT, 54 POS, 12MM	dwg no 10040862	Rev. D
	catalog no -	CUSTOMER	sheet 2 of 5

DESCRIPTION	DIM D	DIM E	DIM F
2-12MM MODULES PLACED END-TO-END	2.00	11.90 2X	12.00
1-12MM MODULE & 1-14MM MODULE PLACED END-TO-END	3.00	11.90 1X & 13.90 1X	13.00



DETAIL B

RECOMMENDED PCB LAYOUT
FOR SINGLE ENDED APPLICATIONS
COMPONENT SIDE
(TWO ADJACENT FOOTPRINTS SHOWN)
NOTES 6 & 7



AirMax VS R/A HEADER ASSY
PRESS-FIT, 54 POS, 12MM
catalog no -

dwg no 10040862

Rev. D

CUSTOMER sheet 3 of 5



Copyright FCI.

Ø SEE NOTE 9
0.10
ALL HOLES

GND POSITION

(0.100)

1.40 8X

2.100
CL OF POS
1, 3, & 5

DETAIL A
SCALE 4:1

ANTIPAD WIDTH=
2.0-(TRACE+SPACE+TRACE)
TYP

2.00 TYP

3.200
TYP

2.000
CL OF POS
2, 4, & 6

ANTIPAD WIDTH=
2.0-(TRACE+SPACE+TRACE)
TYP

2.00 TYP

Ø SEE NOTE 9
0.10
ALL HOLES

GND POSITION

(0.100)

1.40 8X

2.100
CL OF POS
1, 3, & 5

DETAIL B
SCALE 4:1

1.800
TYP

2.000
CL OF POS
2, 4, & 6



PART NUMBER	PRESS-FIT TAIL PLATING TYPE	SHORT DETECT CONTACT
10040862-101	TIN/LEAD ALLOY OVER NICKEL	NO
10040862-101LF	TIN OVER NICKEL (LEAD FREE)	
10040862-111	TIN/LEAD ALLOY OVER NICKEL	YES (SEE NOTE 13)
10040862-111LF	TIN OVER NICKEL (LEAD FREE)	

NOTES:

1. CONNECTOR MATERIALS:
 HOUSING & RETAINER: HIGH TEMP THERMOPLASTIC, NATURAL, UL94V-0
 IMLA PLASTIC: HIGH TEMP THERMOPLASTIC, BLACK, UL94V-0
 CONTACT: COPPER ALLOY

2. CONTACT PLATING:
 SEPARABLE INTERFACE:
 PERFORMANCE-BASED PLATING, QUALIFIED TO MEET THE REQUIREMENTS OF FCI PRODUCT SPECIFICATION GS-12-239 INCLUDING TELCORDIA GR-1217-CORE (NOVEMBER 1995) CENTRAL OFFICE TEST SEQUENCE

PRESS-FIT TAILS: SEE TABLE

3. PRODUCT SPECIFICATION: GS-12-239

4. APPLICATION SPECIFICATION: GS-20-035

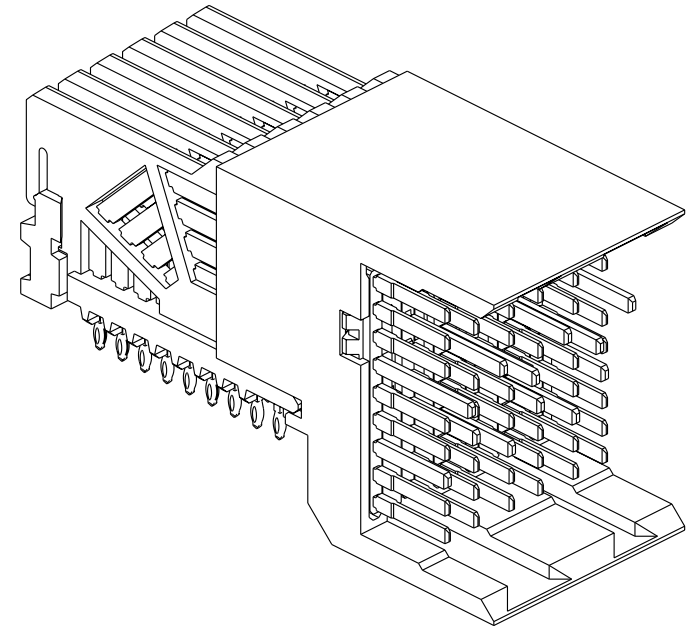
5. PRODUCT MARKING, (PART NUMBER & LOT CODE), ON THIS SURFACE

6. REFER TO CUSTOMER DRAWING 10035911 FOR INFORMATION REGARDING PCB LAYOUT OF POWER AND GUIDE MODULES RELATIVE TO SIGNAL MODULES

7. POSITIONS F OF ODD NUMBERED COLUMNS AND POSITIONS G OF EVEN NUMBERED COLUMNS CORRESPOND TO EARLY MATE HEADER PINS

8. THERE IS NO GROUND BUSSING WITHIN THE CONNECTOR SYSTEM

9. REFER TO CUSTOMER DRAWING 10045979 FOR INFORMATION ON PCB HOLE DIAMETERS AND PLATING OPTIONS.



10. LEAD FREE PRODUCT MEETS EUROPEAN UNION DIRECTIVES AND OTHER COUNTRY REGULATIONS AS DESCRIBED IN GS-22-008.

11. THE HOUSING WILL WITHSTAND EXPOSURE TO 260°C PEAK TEMPERATURE FOR 40 SECONDS IN A CONVECTION, INFRA-RED OR VAPOR PHASE REFLOW OVEN.

12. PACKAGING MEETS GS-14-920 LEAD FREE LABELING SPECIFICATION.

13. MATING PIN E4 HAS 0.5mm LESS NOMINAL WIPE THAN THE SHORTEST SIGNAL PIN.



Copyright FCI.



FCI	Part	AirMax VS R/A HEADER ASSY	Dwg no	10040862	Rev.	D
	Title	PRESS-FIT, 54 POS, 12MM				
	catalog no	-	CUSTOMER	sheet 5 of 5		