

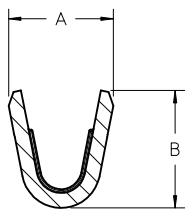
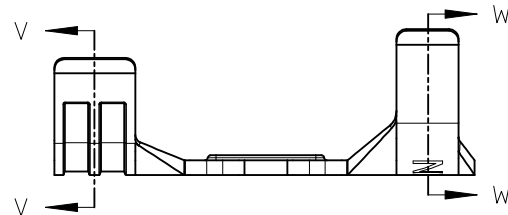
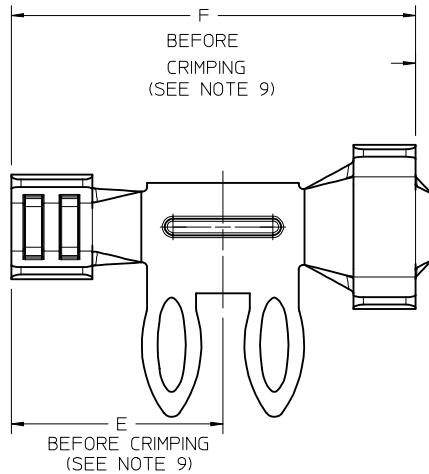
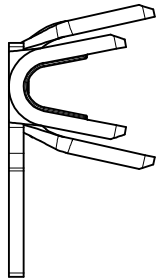
10	9	8	7	6	5	4	3	2	1		
MATERIAL NUMBER	MATERIAL	PLATING	COND SIZE	INS DIA RANGE (SEE NOTE 8)	MAX PCB THICKNESS (SEE NOTE 8)	A	B	C	D	E	F
172249-0100	BRASS	RMT	14-16 AWG	2.40-2.79 (UL 1007)	1.57 / .062"	3.40	3.55	4.20	3.65	4.33	8.27
172249-0200	BRASS	RMT	18-20 AWG	1.80-2.10 (UL 1007)	1.57 / .062"	2.14	2.40	3.36	2.99	4.33	8.27

LEGEND: 172249-WXYZ

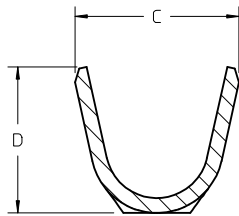
W = PLATING  
(0 = REFLOWED MATTE TIN)

X = CRIMP SIZE  
(1 = 14-16 AWG, (UL1007) INSUL / .062" PCB)  
(2 = 18-20 AWG, (UL1007) INSUL / .062" PCB)

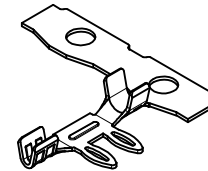
YZ = NOT USED  
(00)



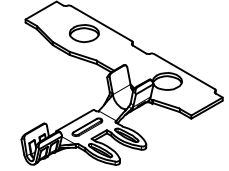
SECTION V-V  
CONDUCTOR CRIMP



SECTION W-W  
INSULATION CRIMP



ISOMETRIC VIEW  
SERIES 172249



FOR 22-24 AND  
26-28 AWG VERSIONS  
SEE SERIES NO  
172677

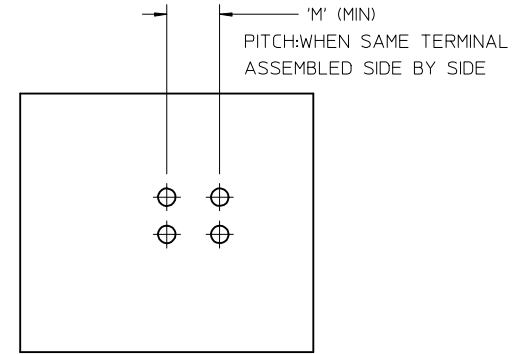
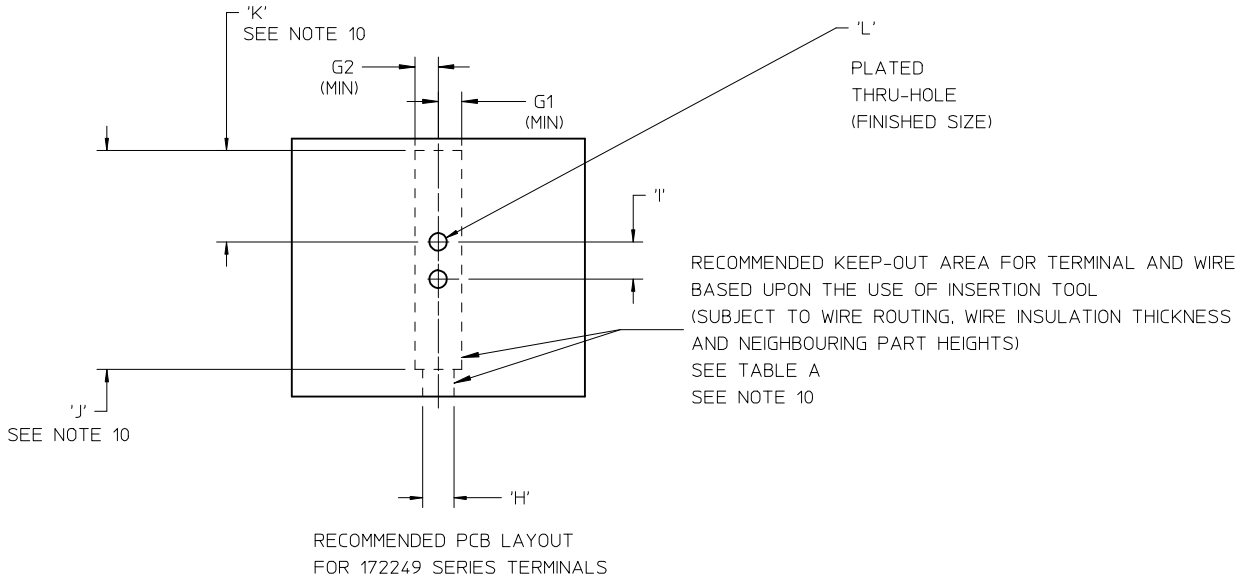
NOTES:

- MATERIAL: COPPER ALLOY
- FINISH:  
RMT = OVERALL REFLOWED MATTE TIN, 0.00152mm / .000060 inches MIN  
OVER 0.00127 mm / .000050 inches MIN NICKEL, OVERALL
- PRODUCT SPECIFICATION: PS-172249-001
- PACKAGING INFORMATION: PK-172249-001  
(24" CARDBOARD REEL)
- MATES WITH: N/A (FOR SOLDERING TO PCB)
- THIS PART CONFORMS TO CLASS B REQUIREMENTS OF COSMETIC SPEC PS-45499-002.
- TERMINAL DESIGNED FOR THRU-HOLE SOLDERING, NOT FOR PRESS-FIT. INTERFERENCE FIT PROVIDES RETENTION OF TERMINAL TO BOARD DURING SOLDERING ONLY.
- INSULATION DIAMETER RANGES AND MAX PCB THICKNESS SHOWN ARE GUIDELINES TO PRODUCE 0.50mm / (0.020 inches) OR MORE SOLDER-TAIL PROTRUSION.
- CRIMPING PROCESS CAUSES TERMINAL GROWTH OF APPROXIMATELY 1.0mm / (0.04 inches).
- INCLUDING TERMINAL GROWTH AND WIRE BRUSH LENGTH.

KEEP OUT AREA DIMS CHANGED EC NO: UCP2015-2785 DRAWN: SNAGARAVENKA 2015/08/14 CHKD: SHWARG 2015/08/14 APPR: KPRASAD 2015/09/02	QUALITY SYMBOLS	GENERAL TOLERANCES (UNLESS SPECIFIED)	DIMENSION STYLE MM ONLY	SCALE 10:1	DESIGN UNITS METRIC	THIRD ANGLE PROJECTION
	▽=0	4 PLACES ± --- ± ---	DRAWN BY DATE ISHWARG 2013/10/19	TITLE <b>14-20 AWG SOLDER RIGHT TERMINAL</b>		
	▽=0	3 PLACES ± --- ± ---	CHECKED BY DATE			
	▽=0	2 PLACES ± 0.25 ± ---	APPROVED BY DATE RHODGE 2013/11/19	<b>molex</b> DOCUMENT NO. SD-172249-001 SHEET NO. 1 OF 2		
▽=0	1 PLACE ± 0.35 ± ---	MATERIAL NO.				
		0 PLACE ± --- ± ---	SIZE B	THIS DRAWING CONTAINS INFORMATION THAT IS PROPRIETARY TO MOLEX INCORPORATED AND SHOULD NOT BE USED WITHOUT WRITTEN PERMISSION		
		ANGULAR ± 1/2° DRAFT WHERE APPLICABLE MUST REMAIN WITHIN DIMENSIONS				

TABLE A

MATERIAL NUMBER	KEEP OUT ZONE 1: WHEN THE NEIGHBOUR PARTS HEIGHT IS LESS THAN 4.0MM		KEEP OUT ZONE 2: WHEN THE NEIGHBOUR PARTS HEIGHT IS MORE THAN 4.0 MM AND LESS THAN 30.0 MM		H	I ±0.08	J	K	L ∅±0.05	'M' (MIN)
	G1	G2	G1	G2						
172249-0100	2.50	5.40	4.75	7.90	4.29	2.10	10.00	4.75	1.10	6.00
172249-0200	2.50	5.25	4.75	7.85	3.60	2.10	10.00	4.75	1.10	5.40



RECOMMENDED PCB LAYOUT FOR PITCH BETWEEN TERMINALS ( FOR 172249 SERIES )

KEEP OUT AREA DIMS CHANGED EC NO: UCP2015-2785 DRWN: SAGARAVENKA 2015/08/14 CHKD: SHWARG 2015/08/14 APPR: KPRASAD 2015/09/02	QUALITY SYMBOLS	GENERAL TOLERANCES (UNLESS SPECIFIED)	DIMENSION STYLE <b>MM ONLY</b>	SCALE <b>2:1</b>	DESIGN UNITS <b>METRIC</b>	THIRD ANGLE PROJECTION
	▽=0	4 PLACES ± --- ± ---	DRAWN BY DATE ISHWARG 2013/10/19	TITLE <b>14-20 AWG SOLDER RIGHT TERMINAL</b>		
	▽=0	3 PLACES ± --- ± ---	CHECKED BY DATE			
	▽=0	2 PLACES ± 0.25 ± ---	APPROVED BY DATE RHODGE 2013/11/19	<b>molex</b> DOCUMENT NO. SD-172249-001 SHEET NO. 2 OF 2		
		1 PLACE ± 0.35 ± ---	MATERIAL NO.			
	0 PLACE ± --- ± ---	SIZE <b>B</b>				
	ANGULAR ± 1/2° DRAFT WHERE APPLICABLE MUST REMAIN WITHIN DIMENSIONS	THIS DRAWING CONTAINS INFORMATION THAT IS PROPRIETARY TO MOLEX INCORPORATED AND SHOULD NOT BE USED WITHOUT WRITTEN PERMISSION				