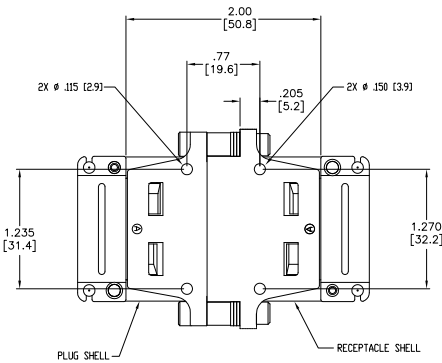
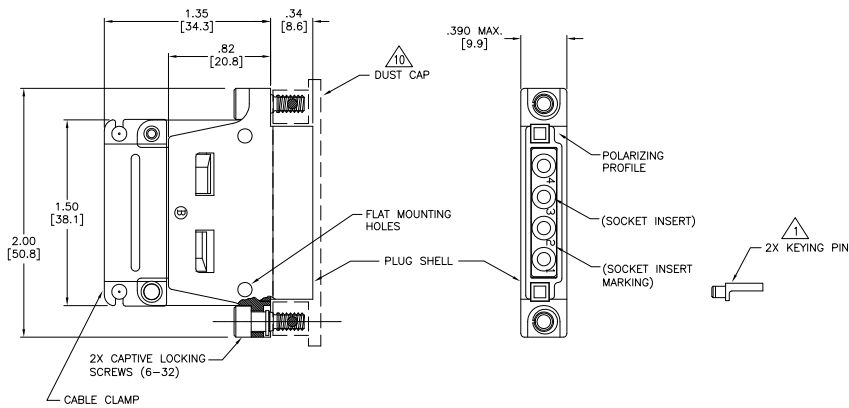
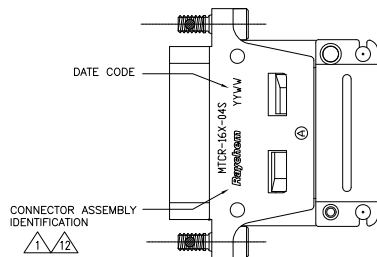


THIS DRAWING AND THE INFORMATION SET FORTH HEREON ARE THE PROPERTY OF TYCO ELECTRONICS, AND ARE TO BE HELD IN TRUST AND CONFIDENCE. PUBLICATION, DUPLICATION, DISCLOSURE, OR USE FOR ANY PURPOSE NOT EXPRESSLY AUTHORIZED IN WRITING BY TYCO ELECTRONICS IS PROHIBITED.

| REVISIONS | | | |
|-----------|-------------------------|------------|----------|
| LTR | DESCRIPTION | DATE | APPROVED |
| F | REVISED PER ECN T-19858 | 2/14/95 | R.H. |
| F1 | PER ECO-11-016179 | Aug/8/2011 | M.HIGGY |



FLAT MOUNTING INFORMATION



IDENTIFICATION VIEW

If this document is printed it becomes uncontrolled. Check for the latest revision

NOTES:

- KEYING CODE DOES NOT FORM A PART OF RAYCHEM PART NUMBER SYSTEM AND SHOULD BE OMITTED WHEN ORDERING. KEYING PINS SUPPLIED UN-INSTALLED. SEE TABLE II FOR KEYING POSITIONS.
- COMPLETE CONNECTORS AND ACCESSORIES ARE INDIVIDUALLY BAGGED AND LABELED.
- CONNECTOR IS ENVIRONMENTAL SEALED MEETING THE REQUIREMENTS PER CONNECTOR SPECIFICATION D-6015.
- REAR GROMMET INSERT WILL SEAL ON SMOOTH INSULATION FROM .097" TO .158" O.D.
- CONNECTOR DESIGNED FOR USE WITH POWER AND SHIELDED CONTACTS PER TABLE I.
- INSERTS ARE PERMANENTLY INSTALLED. CONTACTS MAY BE INSERTED AND REMOVED USING TOOL PER NOTE 9.
- ALL UNUSED CAVITIES TO BE SEALED USING SEALING PLUG NUMBER MS 27488-12.
- ALL CONTACT SIZE 12 ARE INSERTED AND REMOVED USING TOOL NUMBER M81969/14-04.
- REFER TO RAYCHEM SPECIFICATION D-6015 FOR COMPLETE DETAILS.
- CONNECTOR SUPPLIED WITH A SHIPPING DUST CAP OVER ENGAGING END.
- CONNECTOR MATING REQUIREMENTS: 9 IN. LBS. FOR TORQUE FOR CAPTIVE LOCKING SCREW.

PART NUMBER:
MTCR-16X-04S

- 1 = NICKEL PLATED PER MIL-C-26074
- 3 = CADMIUM PLATED PER QQ-P-416 OVER NICKEL UNDERPLATE

| TABLE II | | |
|-------------------|------------------|--|
| KEYING CODE CHART | | |
| PART NUMBERS | POSITION OF KEYS | |
| MTCR-16X-04S | -A A- | |
| | -A B- | |
| | -A C- | |
| | -A D- | |
| | -B A- | |
| | -B B- | |
| | -B C- | |
| | -B D- | |
| | -C A- | |
| | -C B- | |
| | -C C- | |
| | -C D- | |
| | -D A- | |
| | -D B- | |
| | -D C- | |
| | -D D- | |

| TABLE I | | | |
|--|----------------|---|---|
| SOCKET CONTACT AND TOOLING INFORMATION | | | |
| CONTACT TYPE | MILITARY P/N | WIRE STRIP LENGTH | TERMINATION TOOL |
| SHIELDED CONTACT FOR COAX CABLE D-602-0107 OR D-602-0095 | | SEE DRAWING D-602-0107 OR D-602-0095 | SEE DRAWING D-602-0107 OR D-602-0095 |
| CONTACT FOR TWISTED PAIR D-602-0105 | | SEE DRAWING D-602-0105 | SEE DRAWING D-602-0105 |
| POWER CONTACT SIZE 12 | M39029/5 12-12 | 1/4" TO 5/16" | M22520/1-01 POSITIONER M22520/1-02 |

© 2011 Tyco Electronics. All rights reserved.

Raychem MTC
CUSTOMER DRAWING

| | | | | |
|---|------------------------|--------------|-------------|--|
| UNLESS OTHERWISE SPECIFIED DIMENSIONS ARE IN INCHES. METRIC DIMENSIONS ARE IN BRACKETS. | DRAWN | ZS.ORBAN | Jul/29/2011 | TE Connectivity TITLE 1 INCH CONNECTOR, PLUG, RECTANGULAR ENVIRONMENTAL, FIXED SOCKET INSERT-ONE MTCR SERIES SIZE C CAGE CODE: 06090 DWG. NO. MTCR-16X-04S REV F1 SCALE: NONE SHEET 1 OF 1 |
| | CHECKED | | | |
| DECIMALS .XXX ± .005 [.13mm] .XX ± .02 [.5mm] | APPROVED | M.HIGGY | Jul/29/2011 | |
| ANGLES .X ± | APPROVED | | | |
| WEIGHT: | CAD NAME | MTCR-16X-04S | | |
| | THIRD ANGLE PROJECTION | | | |

SHEET MTCR-16X-04S