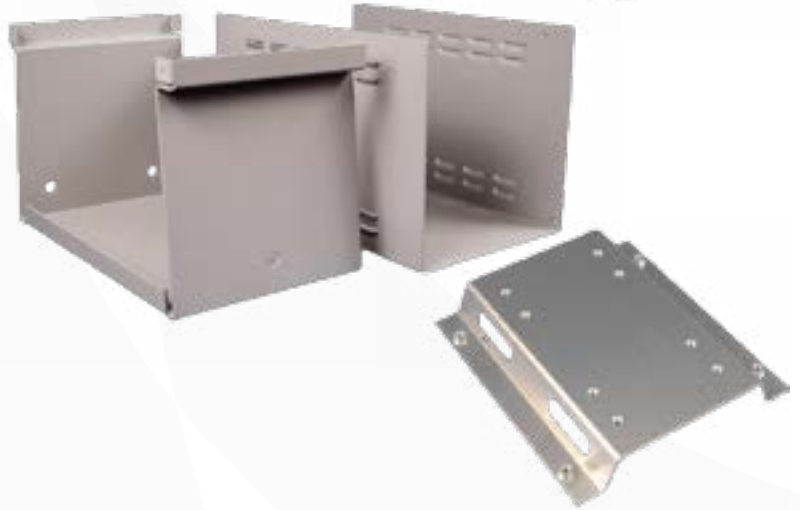


516

Ventilated Transformer Enclosure



internal mounting panel

Key Features:

- Heavy duty (0.1" thick) aluminum base and top - for extra strength (front & back panel will not push in from mounted buttons, controls, connectors , etc.).
- Sides include four horizontal rows of louvers for ventilation.

Includes heavy duty (0.1" thick) aluminum raised mounting panel. Mounting surface includes 8 press nuts for mounting & a 5" (127 mm) x 8.63" (219 mm) area.

- Front & back is recessed near the top with flange - to act as built in lifting handles (see photo features below).
- Sold pre-assembled in a light textured - dark grey powder coat finish.
- Comes with three cord grommets for front & rear holes and required assembly hardware.
- Assembled with 8 self-tapping Philips head screws.
- Replacement screws **SC18609-50** (Pkg. of 50, Philips head - #8 x 3/8" machine screws).

Part Number	Units	Width	Length	Depth
516-0010	in mm	8.5 216	14.38 365	9.25 235

