

Panel mounting frames - VS-PPC-F1-SCRJ-MNNA-1RP - 1608061

Please be informed that the data shown in this PDF Document is generated from our Online Catalog. Please find the complete data in the user's documentation. Our General Terms of Use for Downloads are valid (<http://download.phoenixcontact.com>)



SCRJ panel mounting frame, IP67, for push-pull interlocking, metal, for transceiver, for square panel cutout, with grommet, without mounting screws



Key commercial data

Packing unit	1 pc
Weight per Piece (excluding packing)	15.7 GRM
Custom tariff number	85366990
Country of origin	Germany

Technical data

Mechanical characteristics

Number of positions	2
Insertion/withdrawal cycles	≥ 500
Color	silver

Ambient conditions

Ambient temperature (operation)	-40 °C ... 80 °C
Degree of protection	IP65/67

Material data

Inflammability class according to UL 94	V0
Housing material	Zinc die-cast
Material	Metal
Sealing material	NBR
Seal material	NBR

Electrical characteristics

Number of positions	2
---------------------	---

Panel mounting frames - VS-PPC-F1-SCRJ-MNNA-1RP - 1608061

Technical data

Electrical characteristics

Pollution degree	2
------------------	---

Classifications

eCl@ss

eCl@ss 4.0	24190219
eCl@ss 4.1	24190219
eCl@ss 5.0	27141137
eCl@ss 5.1	27141137
eCl@ss 6.0	27141137
eCl@ss 7.0	27141137
eCl@ss 8.0	27141137

ETIM

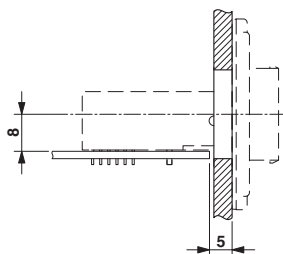
ETIM 3.0	EC001121
ETIM 4.0	EC001121
ETIM 5.0	EC002310

UNSPSC

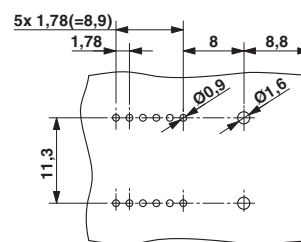
UNSPSC 6.01	31261501
UNSPSC 7.0901	31261501
UNSPSC 11	31261501
UNSPSC 12.01	31261501
UNSPSC 13.2	31261501

Drawings

Dimensioned drawing



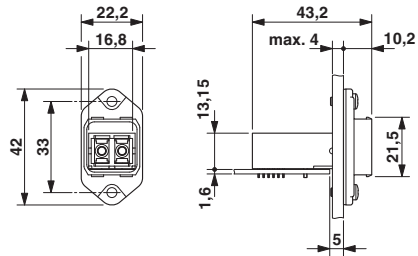
Drilling diagram



Drilling diagram

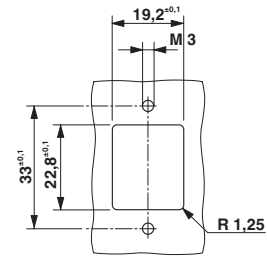
Panel mounting frames - VS-PPC-F1-SCRJ-MNNA-1RP - 1608061

Dimensioned drawing



Push-Pull SCRJ panel mounting frame

Dimensioned drawing



Panel cutout