

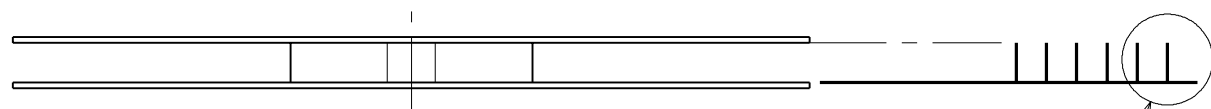
SJ018651-E

DWG. NO.

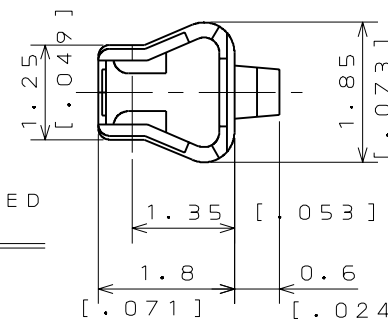
REFERENCE ONLY



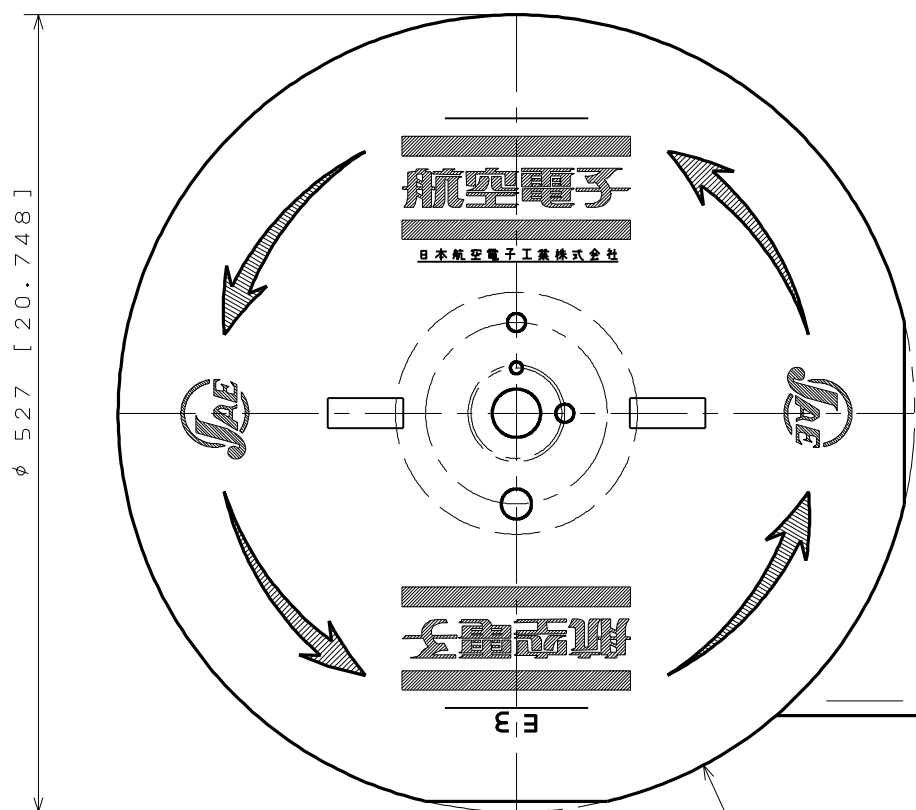
SYM.	DCN NO.	DESCRIPTION	DATE	DRAWN	CHECKED	APP'D	APP'D
2	25986	CHANGED MAGAZINE FORM	89. 10. 12		K. IBARAKI	T. MIYASHITA	H. FUJINO
3	29097	REMOVE NOTE. 5	91. JULY '91	J. HAYAKAWA (C. KITADA)	H. AMEMIYA	T. MIYASHITA	H. FUJINO



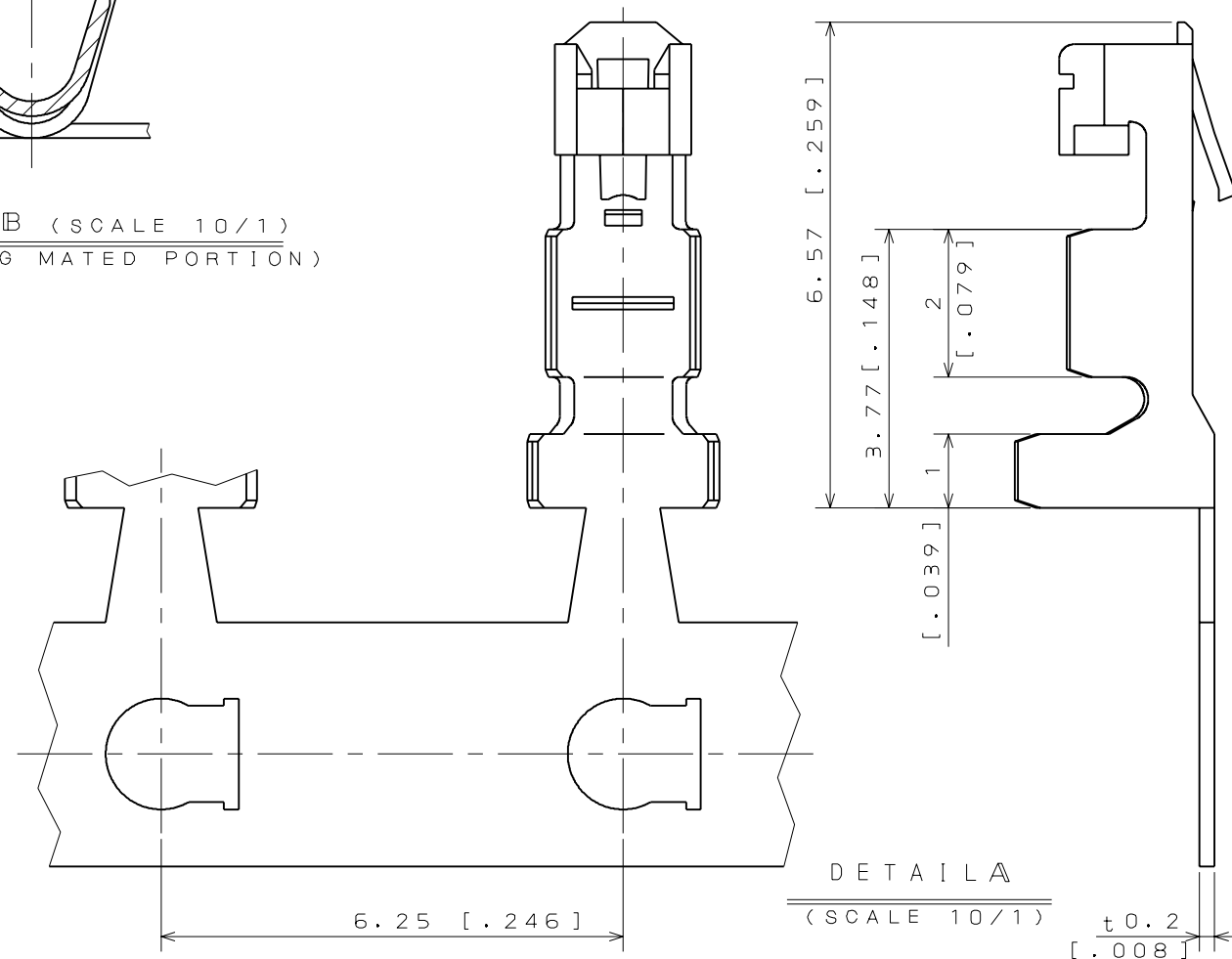
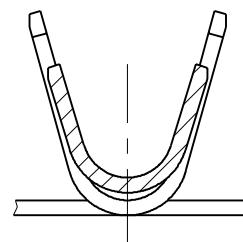
A



EXCLUDING MATED PORTION



DETAIL B (SCALE 10/1)
(EXCLUDING MATED PORTION)



DETAIL A
(SCALE 10/1)

NOTE

1. INSERT PIN : 0.64±0.05 SQU.
2. APPLICABLE WIRE : #22~#28AWG, STRANDED.
3. NO PLATING ON THE SEARING AREAS.
4. APPLICABLE CRIMPING MACHINE FOR THIS MAGAZINE ASS'Y IS CT350-2-***.
5. APPLICABLE WIRE INSULATION OUTER DIA:1.0~1.7mm
TUBE OUTER DIA COVERING SHIELDED WIRE:1.9mmMAX.

DIMENSIONS ARE IN MILLIMETERS
TOLERANCES ON: (INCHES)

DIMENSION	TOLERANCE	ANGLES	TOLERANCE
. ±	± 0.8 [.031]	X° ±	±
.X ±	± 0.5 [.020]	X°X ±	±
.XX ±	± 0.2 [.008]	CONCENTRICITY	WITHIN T.I.R.
.XXX ±			

ITEM	DESCRIPTION	Q'TY	MATERIAL	FINISH	REMARKS
3	SOCKET CONTACT	10000	PHOSPHOR BRONZE	TIN PLATING	
2	TAPE	1	PAPER		
1	MAGAZINE	1	PAPER		

REFERENCE DOCUMENT	DATE	SCALE	WT.	Q'TY	JAPAN AVIATION ELECTRONICS INDUSTRY, LTD. MUSASHINO, AKISHIMA-SHI TOKYO, JAPAN DWG. NO. SJ018651-E
	9. OCT. '88	5/1			
MATERIAL	DRAWN H. TSUCHIYA	TITLE IL-G-C2-SA-10000 (MAGAZINE ASSEMBLY)			
TREATMENT	CHECKED K. IBARAKI	SERIES IL-G			
FINISH	APP'D Y. NISHINO	APP'D H. FUJINO			

DCF-116A

