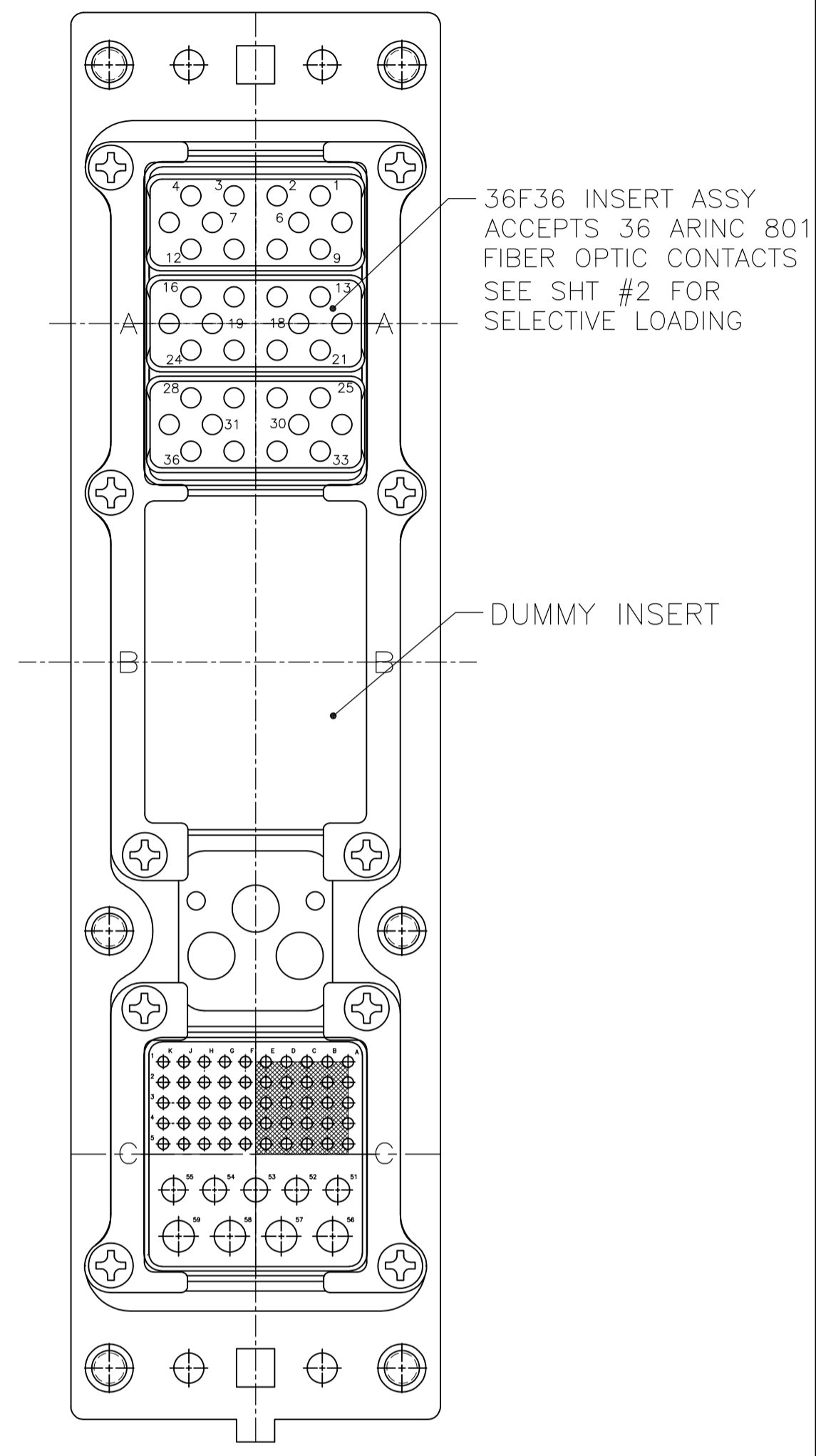
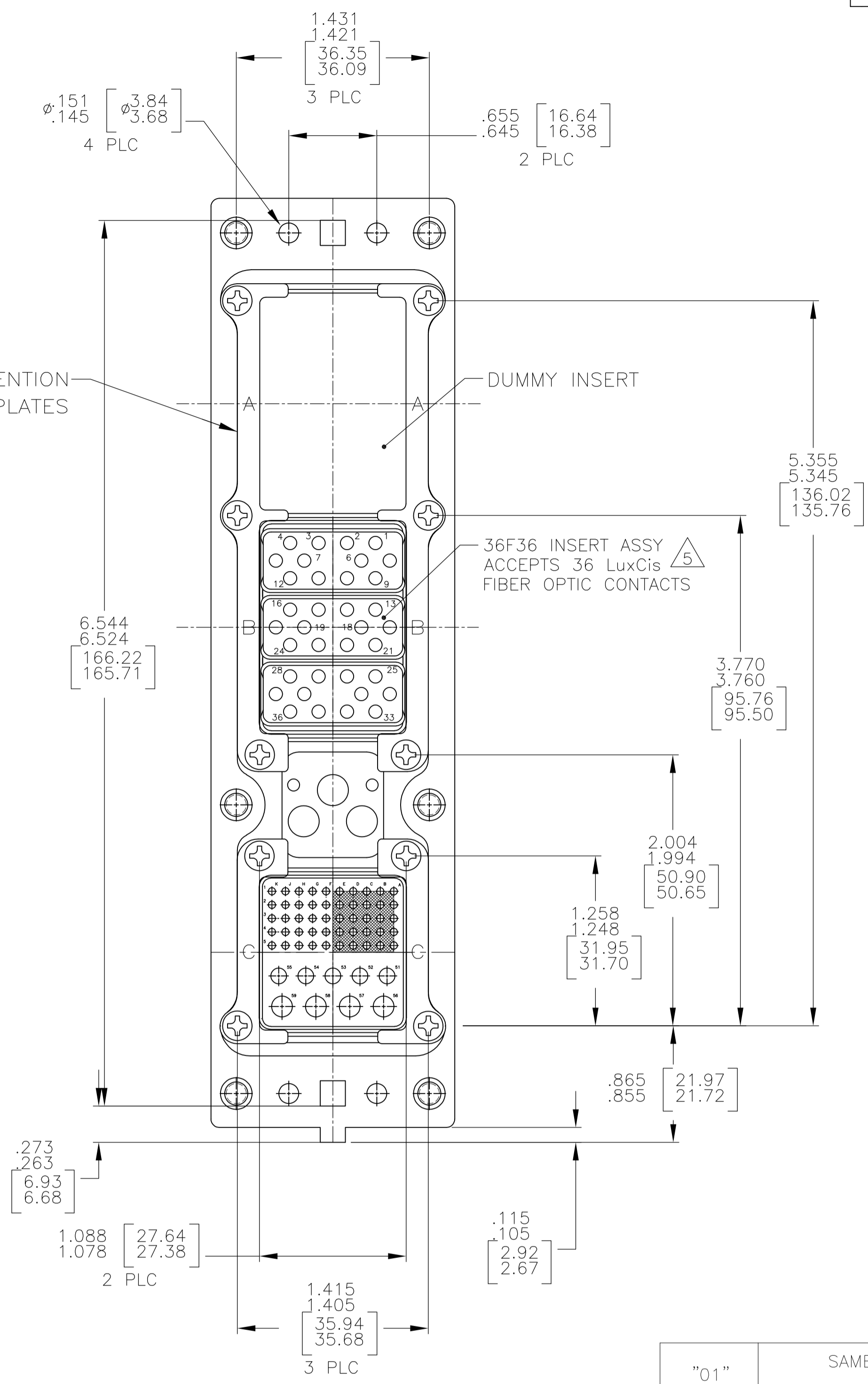
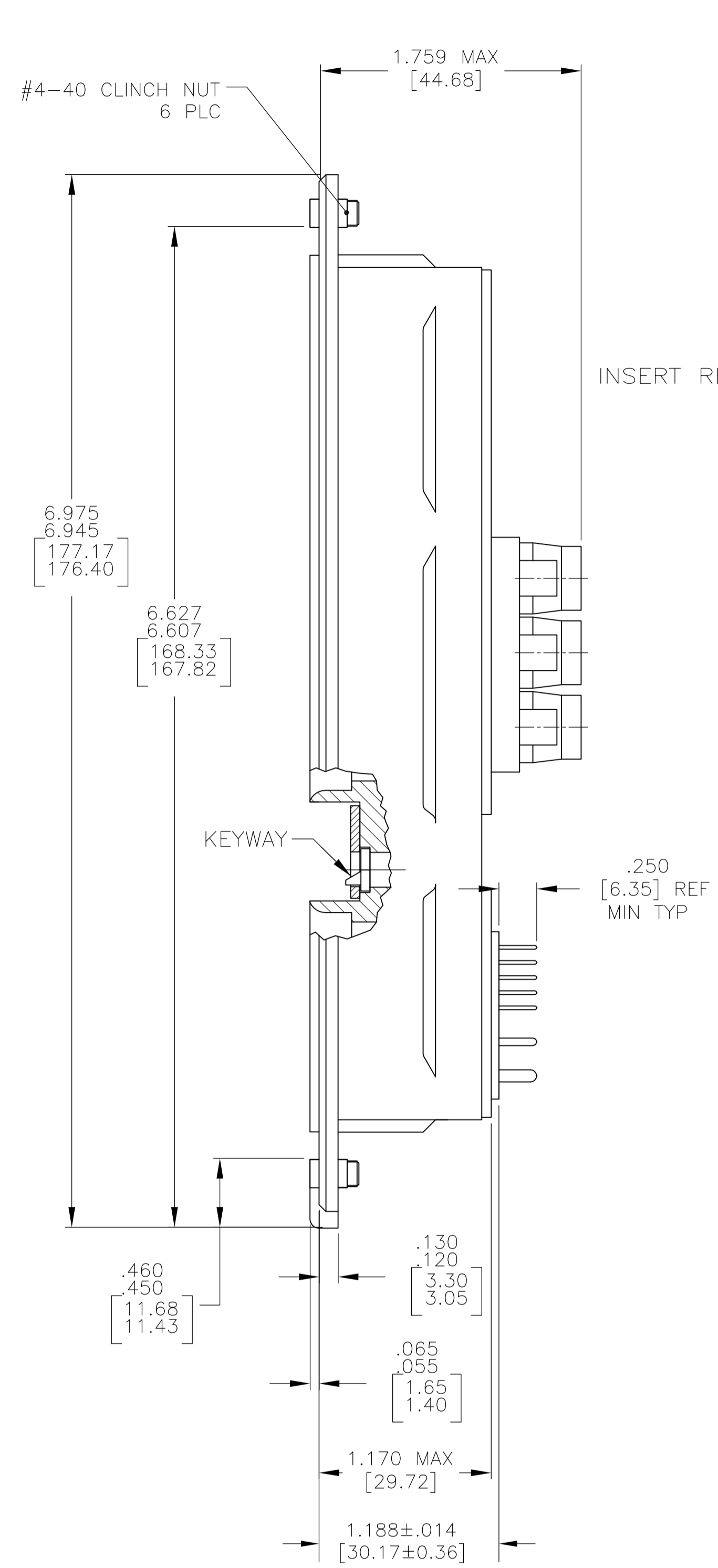
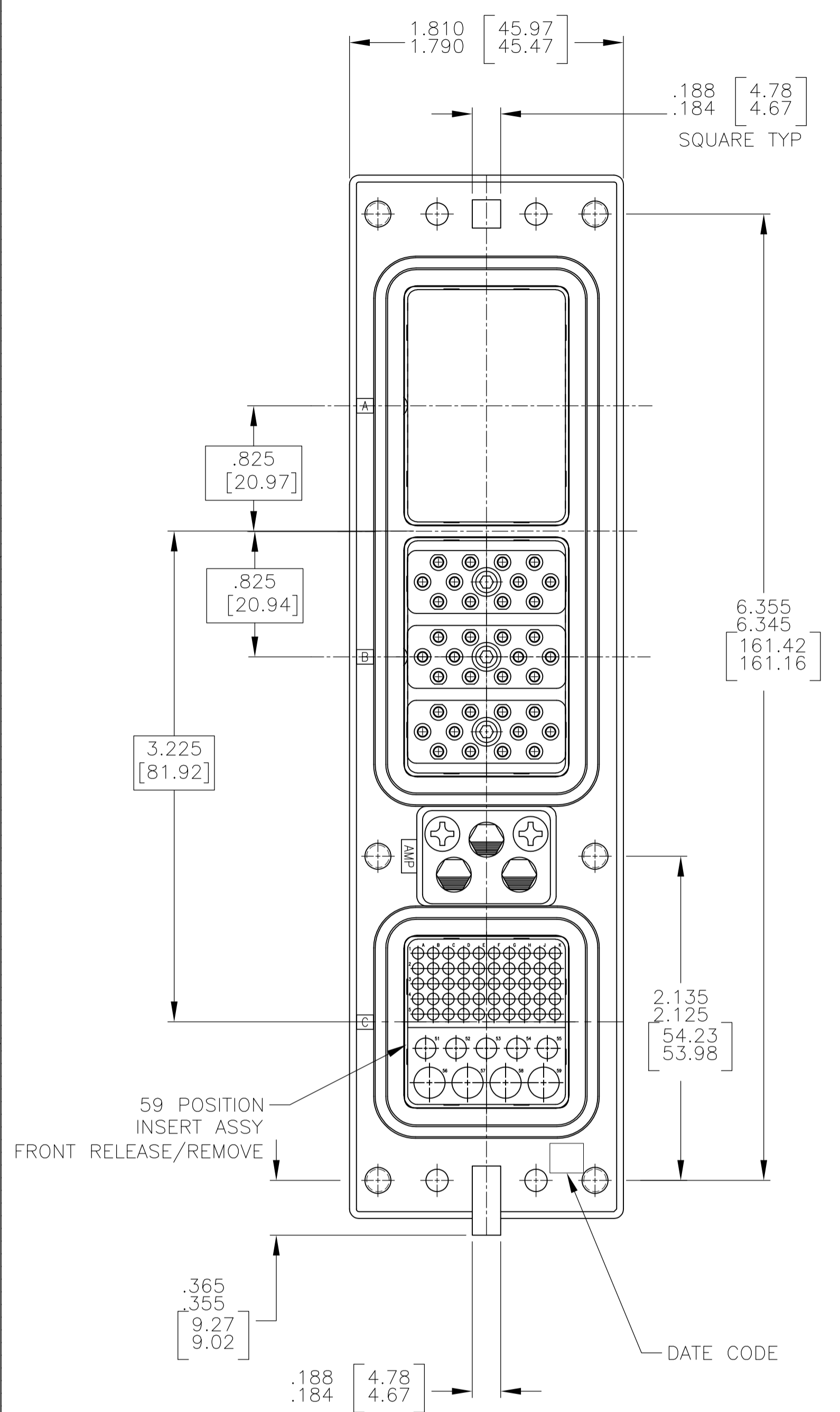


REVISONS		DATE	BY	APPV
F	LTR			
H	REV PER ECO-12-000109	24JAN12	PY	WB



1883150-2 VIEW

- CONNECTOR DIMENSIONS ARE PER ARINC 600 SPECIFICATION.
- CONNECTOR IS SUPPLIED WITH CONTACTS (PER TABLE) ASSEMBLED AS SHOWN.
- KEYING SHOWN IN POSITION "01" FOR ILLUSTRATION ONLY. CONNECTORS SHIPPED WITH KEYING INSTALLED IN POSITION PER TABLE. FOR POSITION "00" KEYING HARDWARE SHIPPED UNASSEMBLED.
- MODULE B (-1), MODULE A (-2) (36F36) IS SUPPLIED WITHOUT CONTACTS. MUST BE ORDERED SEPARATELY.
- DUST COVER IS INSTALLED BUT NOT SHOWN.

COMPONENT	MATERIAL	FINISH
SHELL	DIE CAST ALUMINUM PER ASTM-B-85	ELECTROLESS NICKEL PER MIL-C-26074
INSERT RETENTION PLATES	ALUMINUM ALLOY PER ASTM-B-209	ELECTROLESS NICKEL PER MIL-C-26074
FLAT HEAD SCREWS AND LOCKWASHERS	STAINLESS STEEL	PASSIVATED
POLARIZING KEYS	ZINC ALLOY PER ASTM-B-86	-
POLARIZING KEY RETAINING PLATE	ALUMINUM ALLOY PER ASTM-B-209	BLUE ANODIZED PER MIL-A-8625
CLINCH NUT	STEEL	TRIVALENT CHROMATE OVER ZINC PLATE WITH MOLY LUBE
36F36 INSERT	THERMOSET OR THERMOPLASTIC PPS PER MIL-M-24519	-
DUMMY INSERT	ALUMINUM ALLOY PER ASTM-B-85	ELECTROLESS NICKEL PER MIL-C-26074
59 POSITION INSERT	THERMOSET OR THERMOPLASTIC PPS PER MIL-M-24519	-

KEYING POSITION	CONTACTS INCLUDED AND INSTALLED	PART NUMBER
"01"	SAME AS 1183150-2 EXCEPT USING TE 801 INSERTS	1883150-3
"01"	MODULE C 1663767-3 SZ 16 FILLER PLUG (QTY=5) 1663767-1 SZ 22 FILLER PLUG (QTY=15) 203839-2 SZ 16 SEALING PLUG (QTY=22) 211431-4 SZ 22 SOCKET CONTACT (QTY=35) 448140-3 SZ 12 PIN CONTACT (QTY=4) SELECTIVE LOADED (SEE SHEET #2) PURCHASED INSERTS USED IN THIS ASSEMBLY	1883150-2
"01"	MODULE C 211431-4 SZ 22 SOCKET CONTACT (QTY=50) 1-448139-1 SZ 16 PIN CONTACT (QTY=5) 448140-3 SZ 12 PIN CONTACT (QTY=4)	1883150-1

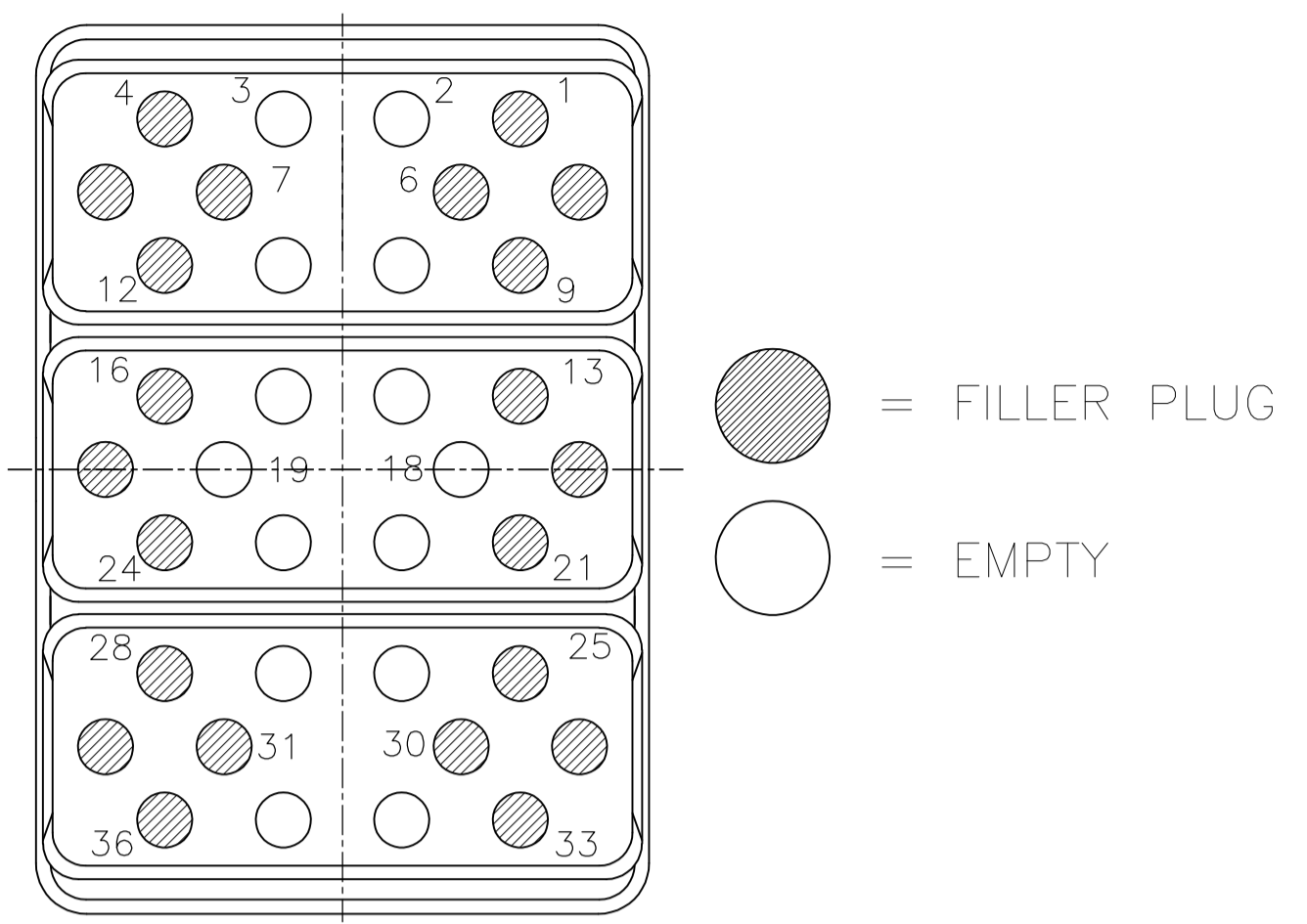
THIS DRAWING IS A CONTROLLED DOCUMENT. DIMENSIONS: INCHES. TOLERANCES UNLESS OTHERWISE SPECIFIED: 0 PLC ± .005, 1 PLC ± .004, 2 PLC ± .003, 3 PLC ± .002, 4 PLC ± .001, ANGLES ± .001.

DIN C.C.THOMAS 1-3-07, C.K.HOGAN 1-3-07, K.HOGAN 1-3-07

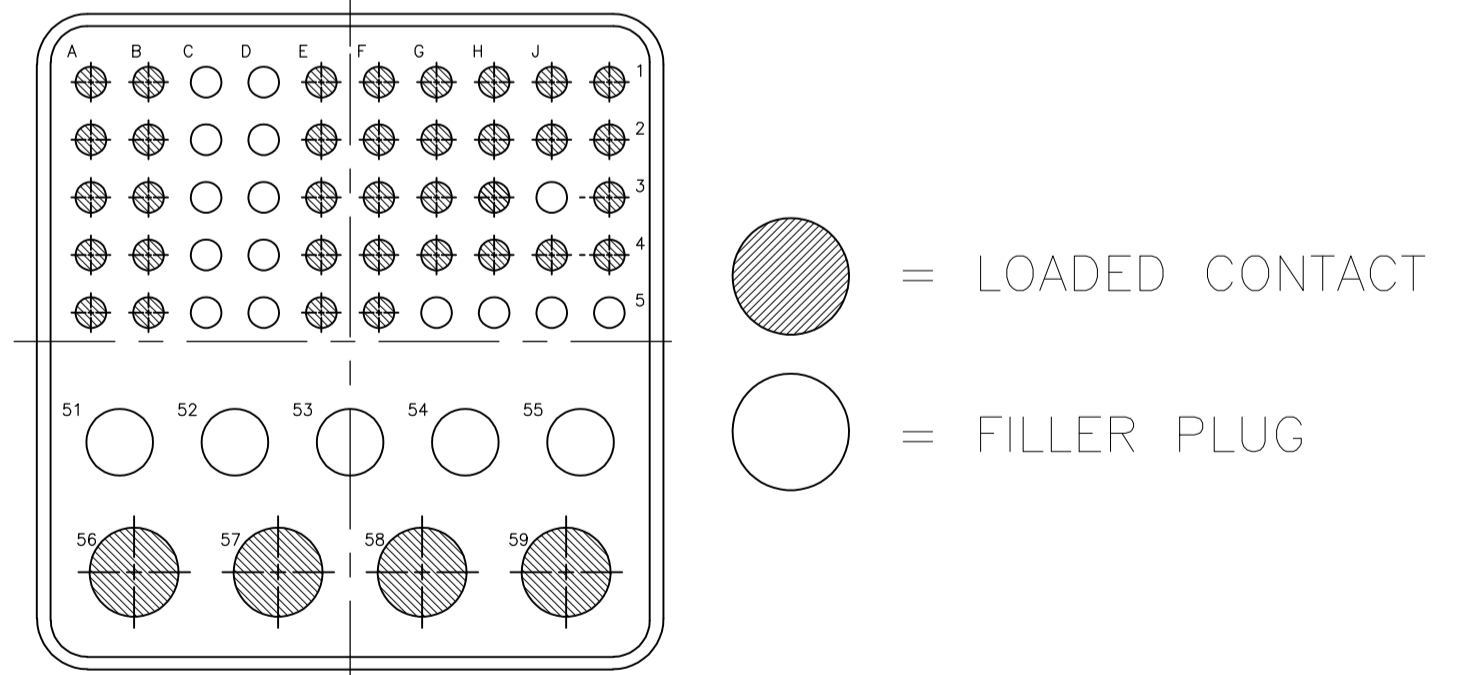
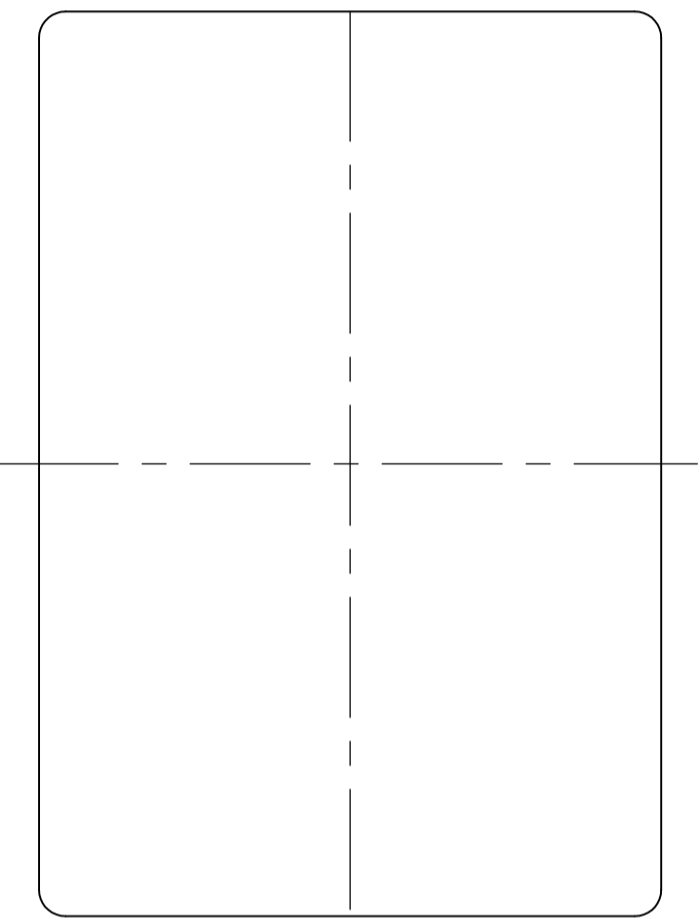
NAME: RCPT ASSY, SIZE 2, ARINC 600

SIZE: A1, CAGE CODE: 00779, DRAWING NO: 1883150

CUSTOMER DRAWING, SCALE: 1.5:1, SHEET 1 OF 2, REV H

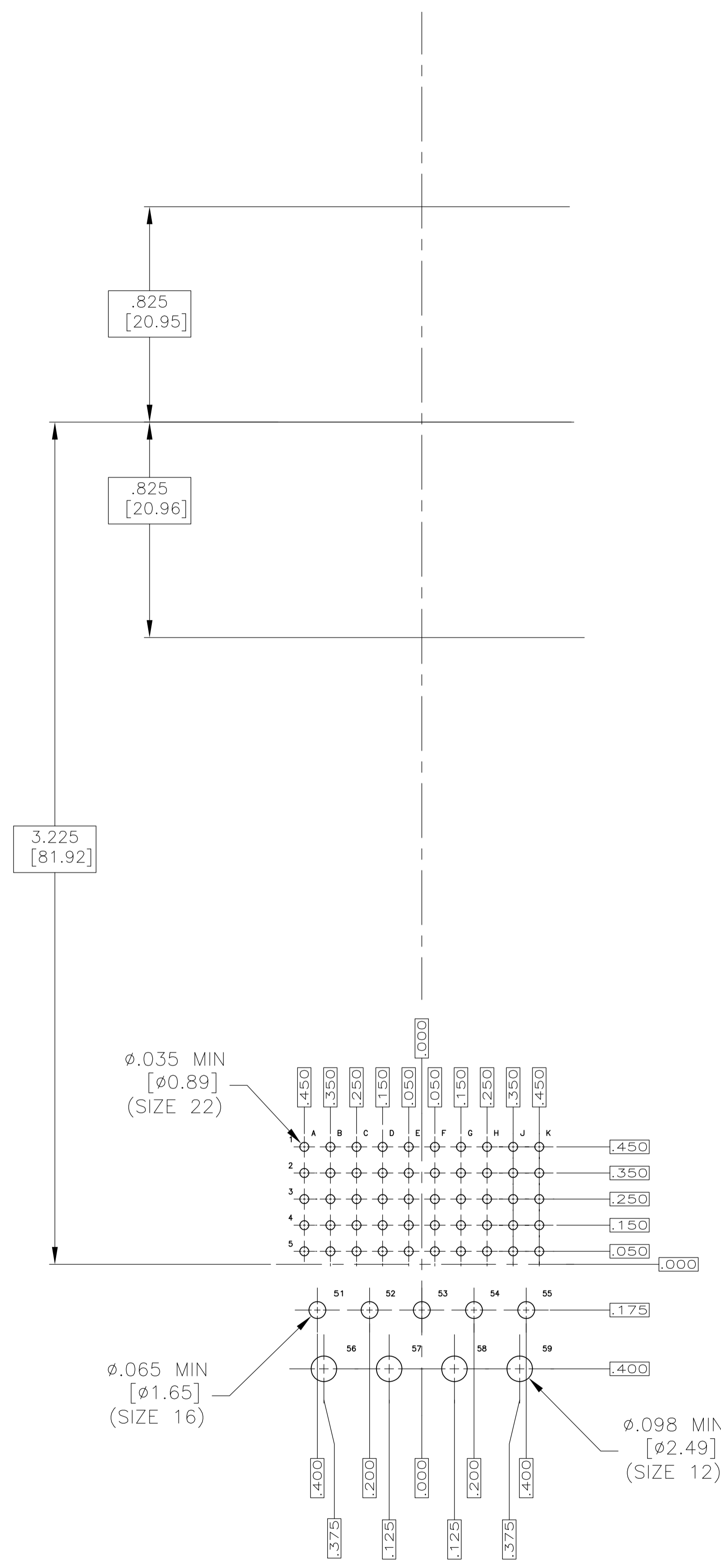


= FILLER PLUG
 = EMPTY



= LOADED CONTACT
 = FILLER PLUG

1883150-2
SELECTIVE LOAD VIEW
SCALE 3:1



RECOMMENDED
P.C. BOARD LAYOUT
SCALE 3:1

THIS DRAWING IS A CONTROLLED DOCUMENT.		DIN C.C.THOMAS 1-3-07	TE Connectivity
		CHK K.HOGAN 1-3-07	
DIMENSIONS: INCHES	TOLERANCES UNLESS OTHERWISE SPECIFIED:	APVD K.HOGAN 1-3-07	NAME RCPT ASSY,SIZE 2,ARINC 600
	0 PLG ± -	PRODUCT SPEC	
	1 PLG ± -	APPLICATION SPEC	
MATERIAL SEE TABLE	FINISH SEE TABLE	WEIGHT -	SIZE A1
		CAGE CODE 00779	DRAWING NO 1883150
		CUSTOMER DRAWING	SCALE 1.5:1 SHEET 2 OF 2 REV H