



Communication Unit Supporting Code Scanner
WB9Z-CU100

Support Tool User's Manual



Introduction

This document is the user's manual for the WB9Z-CU100 support tool, a support tool for the Communication Unit Supporting Code Scanner WB9Z-CU100. The WB9Z-CU100 support tool is provided "as-is" free of charge, whether express or implied, without warranty of any kind, including, but not limited to merchantability, compatibility for specific purposes, non-defect, and non-infringement of third party rights. You may operate this WB9Z-CU100 support tool only under your responsibility and IDEC Corporation ("IDEC") will not be responsible for any damage whatsoever, including but not limited to consequential damage, indirect damage, special damage, incidental damage, loss of profit, business interruptions, loss of business information, and other monetary damages, that occurs from the use or the inability to use this WB9Z-CU100 support tool, even if IDEC is informed of the possibility of such damages.

Before using the WB9Z-CU100 support tool, please read this manual and understand the specifications of the software so that it can be used correctly.

Attention

- IDEC Corporation holds all rights related to this manual. Unauthorized duplication, reproduction, sales, transfers, or leasing without the express consent of IDEC is prohibited.
- The content of this manual may change without prior notification.
- We have taken all possible measures with the content of this product, but if you notice any portions that are unclear, or any mistakes, please contact the dealer where purchased or an IDEC sales representative.

Terms of use

Software End User License Agreement

Important

Carefully read the following license agreement.

This agreement, regarding this software product (hereinafter called "this software") which you are in possession of, is a legal agreement that is concluded between the customer (individual or corporation) and the IDEC Corporation (hereinafter called "IDEC"). This software may include computer software and related media, printed materials (manuals and other documents) as well as "online" or electronic documents. By installing, copying or using this software, the customer is regarded to agree to the terms of this agreement. If you do not agree to the terms of this agreement, IDEC cannot grant the customer permission to install, use, or copy this software product.

1. SCOPE

When the customer uses this software, the conditions of its application are as follows.

- (1) GRANT. Without any charge, IDEC CORPORATION (IC) hereby grants to you a non-exclusive license to use its accompanying software product and accompanying documentation (Software).
- (2) You may: copy the Software for archival purposes, provided any copy must contain all of the original Software's proprietary notices.
- (3) You may not: copy the Software (except as specified above); rent, lease, sell, transfer or otherwise transfer rights to the Software; permit other individuals to use the Software except under the terms listed above; or remove any proprietary notices or labels on the Software.
- (4) IDEC does not guarantee the absence of flaws, compatibility, operability, usability, and non-infringement of this software. Additionally, IDEC bears absolutely no responsibility for any and all types of loss including loss of trust, suspension of operations, hardware failure, and all other commercial loss whether direct or indirect.

2. PROHIBITIONS

- 2.1. You may not: permit other individuals to use the Software except under the terms listed above; modify, translate, reverse engineer, decompile, disassemble (except to the extent applicable laws specifically prohibit such restriction), or create derivative works based on the Software.
- 2.2. Use of this software for profit-making purposes is forbidden.
- 2.3. The use of content for this software to conduct illegal or improper behavior is forbidden.
- 2.4. EXPORT CONTROLS. None of the Software or underlying information or technology may be downloaded or otherwise exported or reexported (i) into (or to a national or resident of) Iraq, Libya, North Korea, Iran or any other country to which the U.S. has embargoed goods; or (ii) to anyone on the U.S. Treasury Department's list of Specially Designated Nationals or the U.S. Commerce Department's Table of Deny Orders.
- 2.5. In the event that the customer is in violation of this agreement or prohibited items resulting in damage to IDEC, IDEC can bill the user in question for compensation for damages and recovery measures, as well as confiscate this software and/or take any other actions deemed necessary.

3. MISCELLANEOUS

- 3.1. TITLE. Title, ownership rights, and intellectual property rights in and to the Software shall remain in IC and/or its suppliers. The Software is protected by the copyright laws of the United States and international copyright treaties. If you receive your first copy of the Software electronically, and a second copy on media, the second copy may be used for archival purposes only. Title, ownership rights, and intellectual property rights in and to the content accessed through the Software is the property of the applicable content owner and may be protected by applicable copyright or other law. This License gives you no rights to such content.
- 3.2. Checking the environment in which this software will be installed and ensuring data retention through backup and other such actions are the sole responsibility of the customer.

- 3.3. This agreement contains the entire agreement between the parties pertaining to the licensing of this software and supersedes all prior agreements and understandings. Revision of this agreement is only performed in writing that is concluded by both parties.
- 3.4. The governing law of this agreement is the law of Japan.

Version up information



This is version up information for WB9Z-CU100 Support Tool. Please check Software Version and Database Version before using.

Refer to  [Version information] in [3. 2. 5 Help] on page 3-10 before checking the version

Fixes and Improvements	WB9Z-CU100 Support Tool Version	
	Software Version	Database Version
Initial release	001.000.00	001.000.00

General terms, abbreviations, and terminology used in this manual


The general terms, abbreviations, and terminology used in this manual are as follows.

Item	Definition
Communication unit	Indicates "WB9Z-CU100".
Control character	ASCII code 00H - 1FH, 7FH. In this document,  is used for expressing these values. For details, refer to  [4. 2 ASCII Code Table] on page 4-2.
Our website	www.idec.com/

Graphic Symbol Glossary

This manual uses the following graphic symbols to simplify explanations:

Notes

Graphic Symbol	Description
	Notes information that should be carefully noted. Failure to operate the product in accordance with the information provided may affect the appearance and performance of the main unit as well as any peripheral devices.

Related Manuals

Related manuals are published on our website. Download and use the latest manuals from our website. Please use this document together with the other manuals related to this communication unit as follows.

Model	Manual name	Contents
B-1968	Communication Unit Supporting Code Scanner WB9Z-CU100 Support Tool Use's Manual (This manual)	Included with the support tool for the communication unit. Explains about support tool.
B-1945	Instruction Sheet: WB2F 2D Code Scanner	Included with the product.
B-1946	Instruction Sheet: WB9Z-CU100 Communication Unit	Included with the product.
B-1952	WB2F 2D Code Scanner User's Manual	Gives an overview of the functions and capabilities of the WB2F, and instructions on its use.
B-1960	WB2F 2D Code Scanner PLC Connection User's Manual	Explains about PLC Connection.
B-1962	WB2F 2D Code Scanner Menu Sheet	Explains about menu sheet.
B-1964	WB9Z-CU100 Communication Unit User's Manual	Gives an overview of the functions and capabilities of the communication unit as well as instructions on its use.

Contents

Introduction i

Attention	i
Terms of use	ii
Version up information	iv
General terms, abbreviations, and terminology used in this manual.....	iv
Graphic Symbol Glossary	iv
Related Manuals.....	v

Contents vi

1 Overview 1-1

1.1 Overview	1-1
1.2 Usage precautions	1-1

2 Operation confirmation 2-1

2.1 System requirements.....	2-1
2.2 WB9Z-CU100 Support Tool setup	2-2
2.2.1 Installing the WB9Z-CU100 Support Tool	2-2
2.2.2 Uninstalling the WB9Z-CU100 Support Tool.....	2-2
2.3 Operation confirmation method.....	2-3
2.3.1 Installing the device driver.....	2-3
2.3.2 Connecting the WB9Z-CU100 to the computer	2-3
2.3.3 Running the WB9Z-CU100 Support Tool.....	2-4
2.3.4 Checking the IP address.....	2-4

3 Menu 3-1

3.1 Menu items list.....	3-1
3.2 Menu item descriptions.....	3-2
3.2.1 File.....	3-2
3.2.2 Function	3-3
3.2.3 Window	3-9
3.2.4 Language.....	3-10
3.2.5 Help	3-10

4 Appendix **4-1**

- 4.1 Troubleshooting4-1
 - 4.1.1 The communication port is not displayed 4-1
- 4.2 ASCII Code Table.....4-2

Index **A-1**

Revision history **A-2**

1 Overview

Explains an overview of WB9Z-CU100 Support Tool and cautions for use.

1.1 Overview

"WB9Z-CU100 Support Tool" is software for configuring the communication unit and checking its operation.

1.2 Usage precautions

In order to use the support tool correctly, please be aware of the following precautions.

- When the communication unit and the WB9Z-CU100 Support Tool are connected, do not turn off the communication unit power supply.
The WB9Z-CU100 Support Tool may be forcibly terminated.
After stopping the connection between the communication unit and the WB9Z-CU100 Support Tool, turn off the communication unit power supply.
- When the communication unit and the WB9Z-CU100 Support Tool are connected, do not allow the computer to enter sleep mode. The WB9Z-CU100 Support Tool may be forcibly terminated.
If the communication unit and the WB9Z-CU100 Support Tool are connected and left for a long period of time, configure the computer so that it does not enter sleep mode.
- Do not run multiple instances of the WB9Z-CU100 Support Tool at the same time. The support tool may not operate correctly.

2 Operation confirmation

This chapter explains the system requirements for WB9Z-CU100 Support Tool, setup, and how to check operation.

2.1 System requirements

This table shows the WB9Z-CU100 Support Tool System requirements.

Item	Details
Computer	PC-AT or compatible
OS	Windows 7 (32/64bit), Windows 8 (32/64bit), Windows 8.1 (32/64bit), Windows 10 (32/64bit)
CPU	1.0 GHz or higher
Memory	1 GB or higher
Hard disk	100 MB or higher
Screen resolution	XGA (1024x768) or higher
Communication port	USB port (USB 2.0 or higher)

* Microsoft and Windows are either registered trademarks or trademarks of Microsoft Corporation in the United States and/or other countries.

2.2 WB9Z-CU100 Support Tool setup

2.2.1 Installing the WB9Z-CU100 Support Tool

To use the WB9Z-CU100 Support Tool it must be installed on a computer. Do so with the following procedure.

Unzip the compressed "wb9z-cu100_support_tool_001-000-00-a.zip" file to the desktop or any desired location. After you unzip the file, double-click "wb9z-cu100_support_tool.exe" inside the "wb9z-cu100_support_tool_001-000-00-a" folder to run the support tool. The support tool may not run correctly if the files in the folder are deleted or moved.

2.2.2 Uninstalling the WB9Z-CU100 Support Tool

When you no longer need the WB9Z-CU100 Support Tool, it may be uninstalled from the computer. Do so with the following procedure.

Delete the entire folder (including the files) that was created by unzipping the compressed "wb9z-cu100_support_tool_001-000-00-a.zip" file. The support tool does not use the registry, so you will not need to delete any registry entries.

2.3 Operation confirmation method

Use WB9Z-CU100 Support Tool to get the IP address of the communication unit.

The example here shows the communication unit in its factory default state where no settings have been changed.

Be aware that some steps may be different if you have changed any settings.

2.3.1 Installing the device driver

A device driver must be installed to allow the communication unit and WB9Z-CU100 Support Tool to communicate.

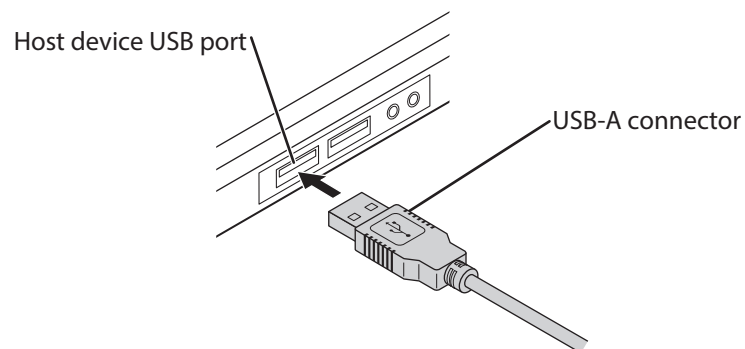
Download the latest device driver installer from the IDEC website and use it to install the device driver. For details on the installer, check the readme that is included with the installer.

IDEC website URL : <http://www.idec.com>

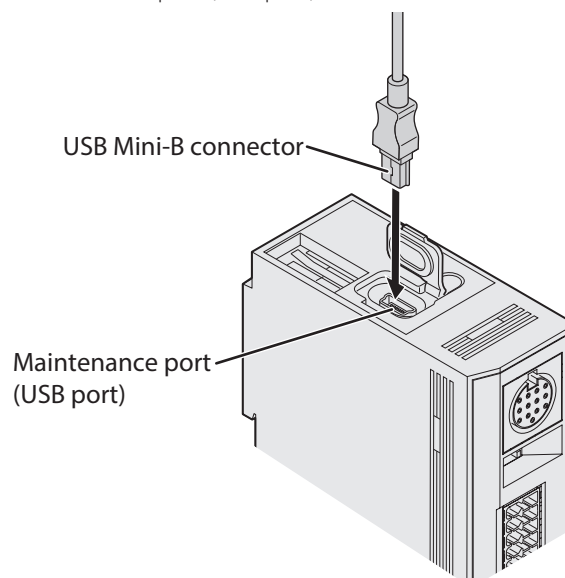
2.3.2 Connecting the WB9Z-CU100 to the computer

● Connection of USB connector

To connect to the host device, firmly insert the USB-A connector straight into the USB port on the host device in the correct orientation.



To connect to the communication unit, open the cover on the maintenance port (USB port) and firmly insert the USB Mini-B connector straight into the maintenance port (USB port) on the communication unit in the correct orientation.



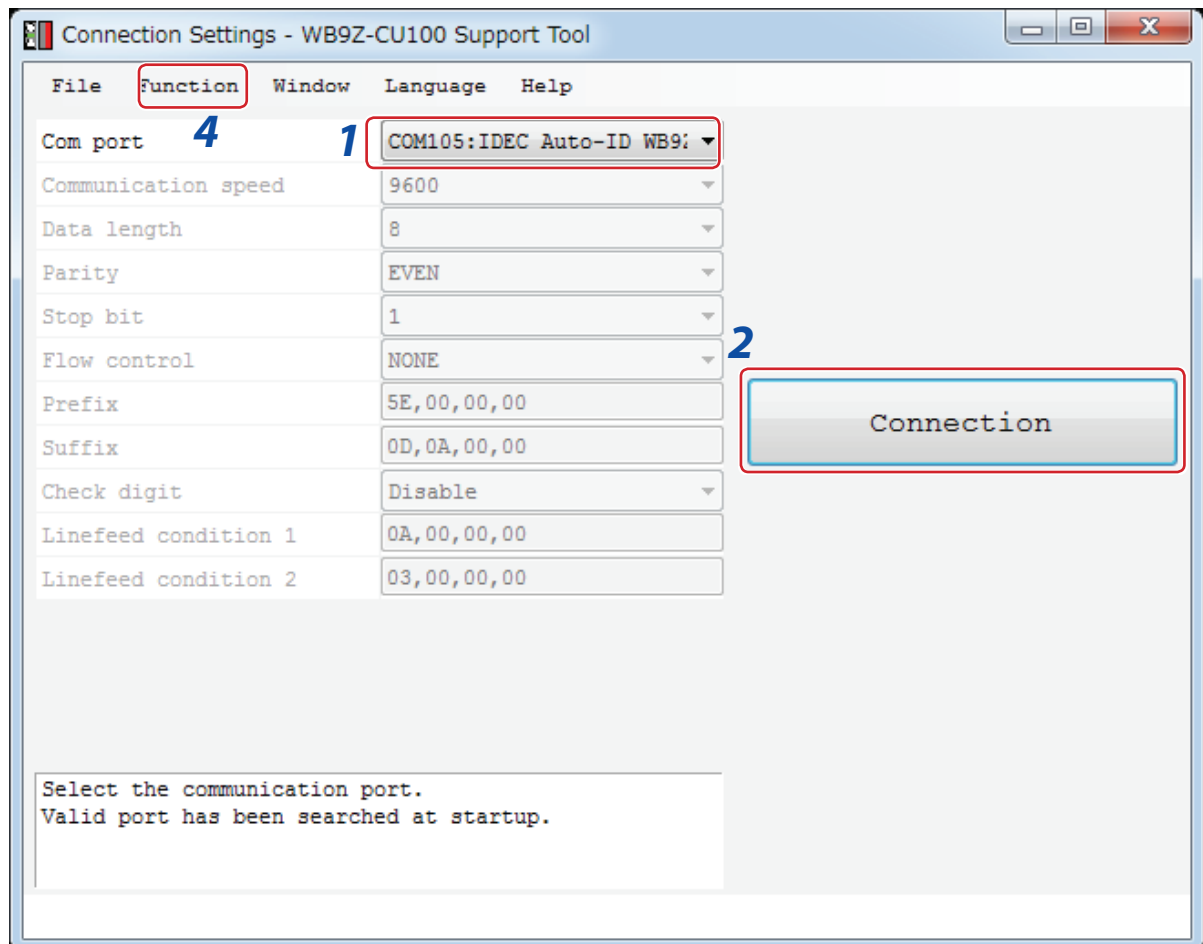
2.3.3 Running the WB9Z-CU100 Support Tool

Double-click "wb9z-cu100_support_tool.exe".

When you double-click the file, the **Connection Settings** screen is displayed.

2.3.4 Checking the IP address

- 1 Select the communication port that the Communication Unit is connected to.



How to check the communication port

•For Windows 7

- (1) Click **Start**, right-click **Computer**, and click **Properties** on the displayed menu.
The **System** screen is displayed.
- (2) Click **Device Manager** on the screen.
The **Device Manager** screen is displayed.
- (3) Double-click **Ports (COM & LPT)**.
- (4) Check the port number for the port that is displayed as "IDEC Auto-ID WB1F USB CDC (COM**)".

- For Windows 8, 8.1, 10

- (1) Press the **Windows** key and the **X** key.
- (2) Click **Device Manager** on the displayed menu.
The **Device Manager screen** is displayed.
- (3) Double-click **Ports (COM & LPT)**.
- (4) Check the port number for the port that is displayed as "IDEC Auto-ID WB1F USB CDC (COM**)".



If the port you checked in "How to check the communication port" is not displayed in the communication port on the Connection Settings screen.

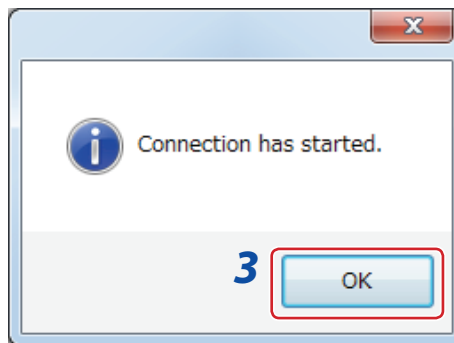
Close the WB9Z-CU100 Support Tool and cycle the power supply to the communication unit, then start the WB9ZCU100 Support Tool again.

2 After you select the communication port, click **Automatic connection**.

3 Check if connection succeeded or failed.

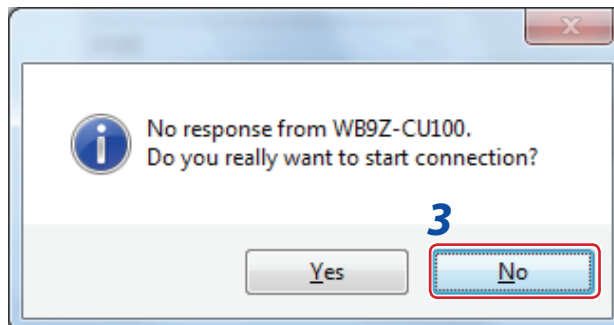
- Connection succeeded

Click the OK and go to step 4.



- Connection failed

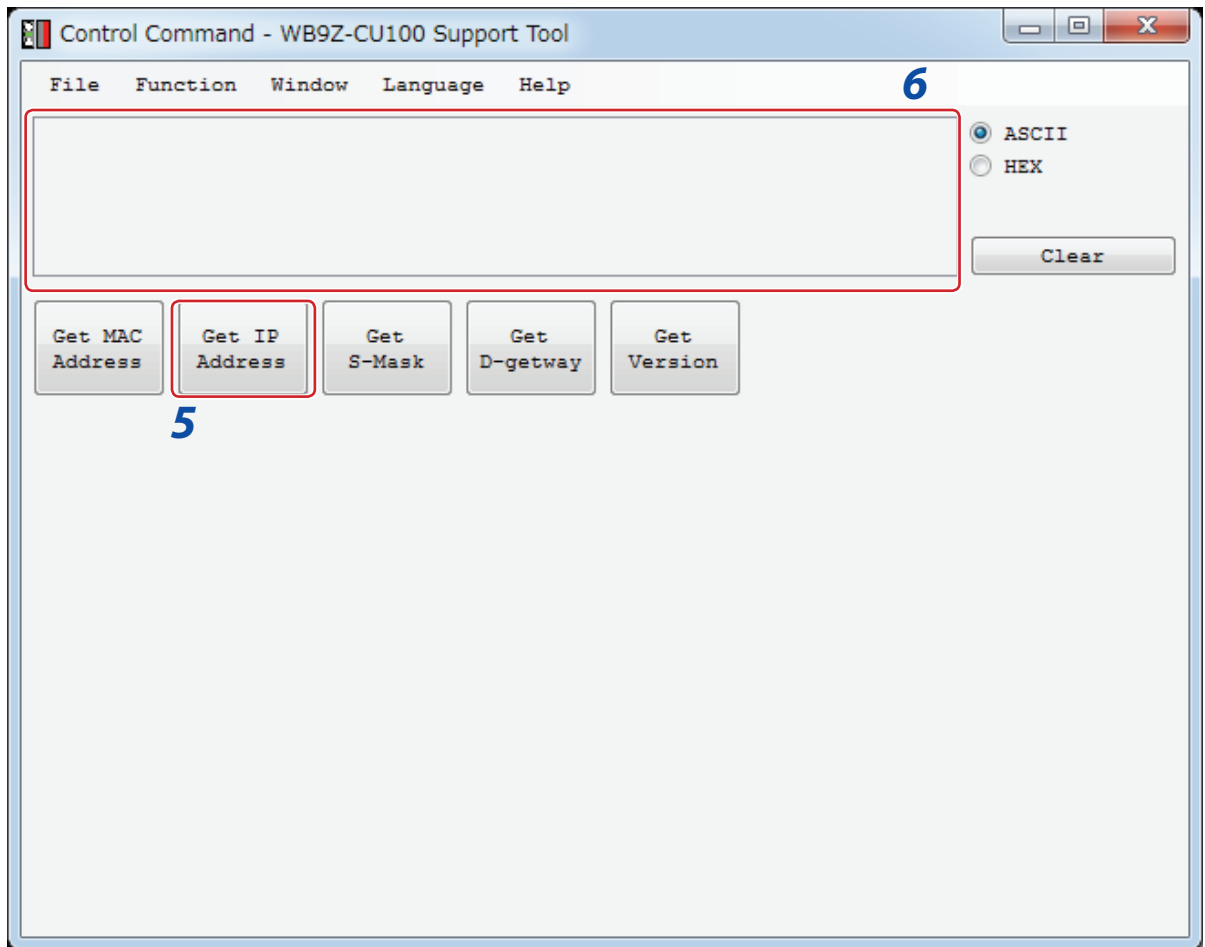
Click the No and repeat the procedure from step 1.



4 After the connection succeeds, click **Function - Control command** on the menu bar.

The **Control Command** screen is displayed.

5 Click the **Get IP address** to get the IP address.



6 The reading results are displayed.

Blue text indicates "Request (Computer → Communication Unit)". Red text indicates "Response (Communication Unit → Computer)".

When the IP address is successfully acquired, it will be returned as the response.

The following shows an example.

Example: ASCII display example

^netipa·↵ Request: Click the Get IP address
 ^192.168.001.100·↵ Response: IP address "192.168.001.100" (successfully acquired)

·↵ Represents the ASCII code control characters **CR** and **LF**. Since the control characters cannot be displayed as characters, they have been replaced with other characters. **LF** alone is displayed as "↵" and the other control characters are displayed as "·". Check the control characters by switching to the HEX display mode.

3 Menu

This chapter explains the WB9Z-CU100 Support Tool menu.

3.1 Menu items list

This table shows the WB9Z-CU100 Support Tool menu items.

	Menu items	Details
File	Connection setting load	Loads settings for connection to the communication unit from a file.
	Connection setting save	Saves settings for connection to the communication unit to a file.
	Exit	Exits the WB9Z-CU100 Support Tool.
Function	Connection settings	Displays the configuration screen for connecting the communication unit and the computer.
	Control command	Displays the screen for sending control commands to the communication unit.
	Scanner settings	Displays the screen for checking and changing the communication unit settings.
	Firmware version up	Displays the screen for updating the communication unit firmware.
Window	Console	Displays the console screen.
Language	日本語 (Japanese)	Sets the WB9Z-CU100 Support Tool display language to Japanese.
	English	Sets the WB9Z-CU100 Support Tool display language to English.
	中文 (Chinese)	Sets the WB9Z-CU100 Support Tool display language to Chinese.
Help	User's manual	Displays the user's manual (this manual).
	Version information	Displays WB9Z-CU100 Support Tool version information.

3.2 Menu item descriptions

3.2.1 File

- **Connection setting load**

Loads a saved connection settings file.
Only XML is supported as the file extension.

- **Connection setting save**

Saves the current connection settings to a file.
The file extension is XML.

- **Exit**

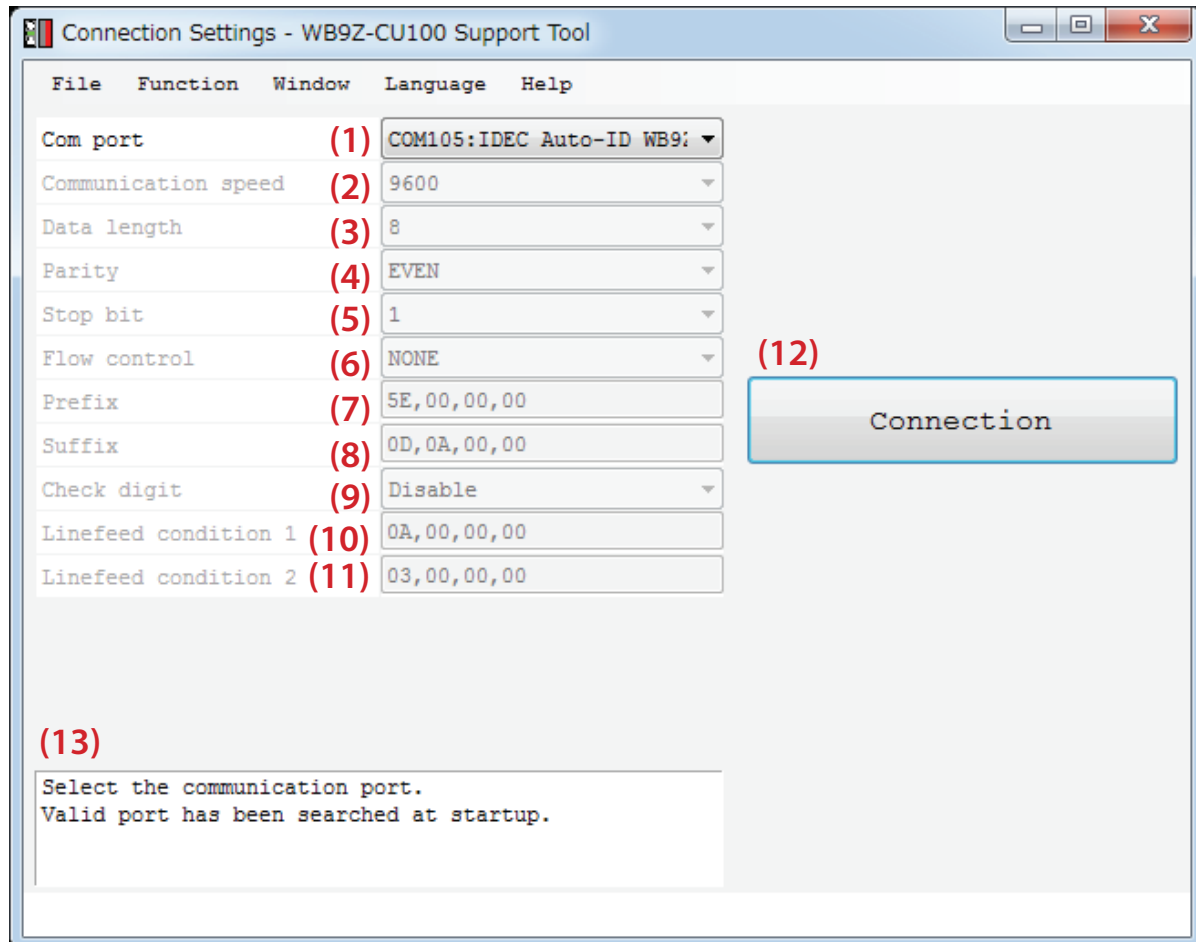
Exits the WB9Z-CU100 Support Tool.

3.2.2 Function

● Connection settings

This configuration screen is for connecting the communication unit and the computer.

When WB9Z-CU100 Support Tool is started, the following connection settings screen is initially displayed.

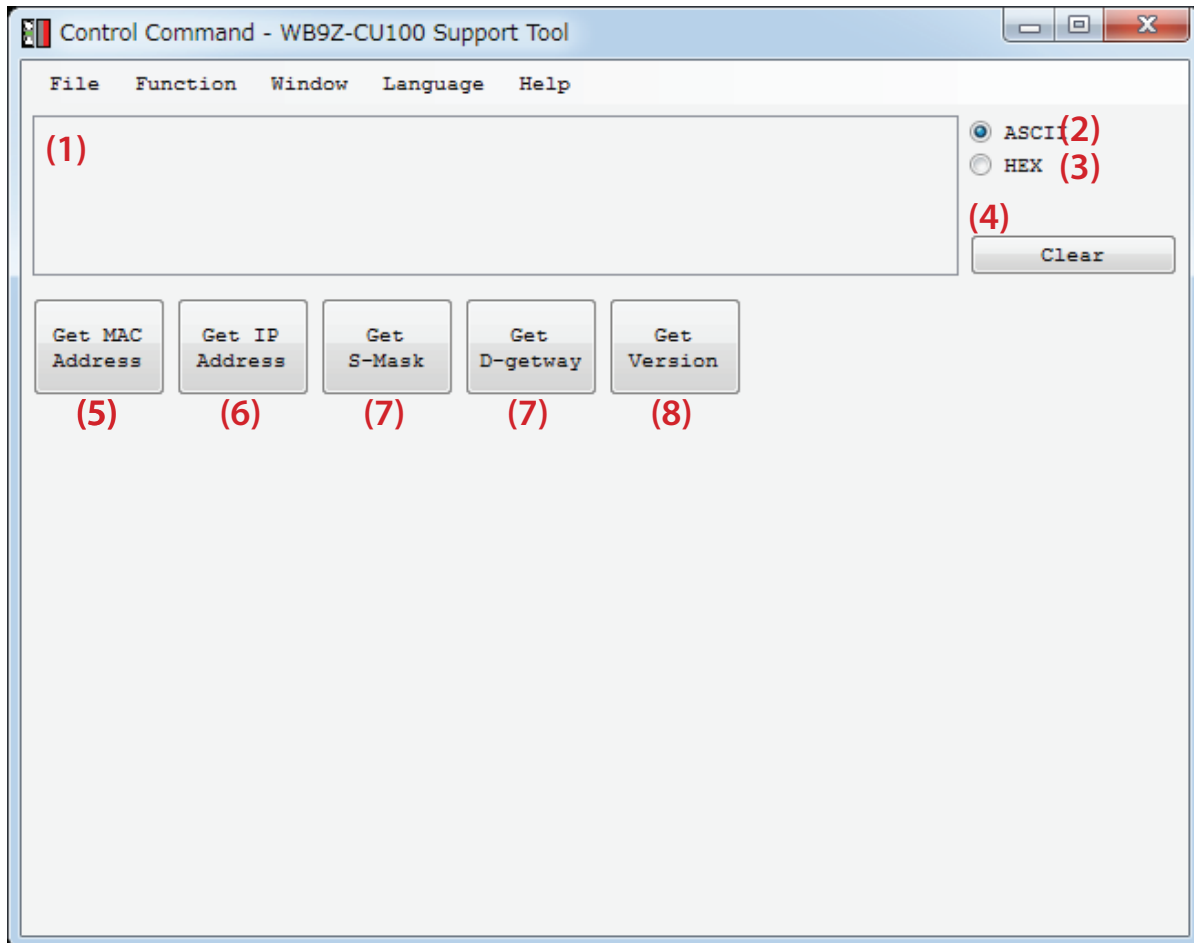


No.	Name	Description
(1)	Com port	Selects the communication port. You can select a valid port.
(2)	Communication speed	Not used.
(3)	Data length	
(4)	Parity	
(5)	Stop bit	
(6)	Flow control	
(7)	Prefix	
(8)	Suffix	
(9)	Check digit	
(10)	Linefeed condition 1	
(11)	Linefeed condition 2	
(12)	Connection /Disconnection	Starts or stops the connection between the communication unit and the computer.
(13)	Message output 1	Displays a description of the selected item.

● Control command

This screen is for sending control commands to the WB9Z-CU100.

Here you can execute operations on the WB9Z-CU100 such as barcode reading and turning the indicator LEDs on and off.

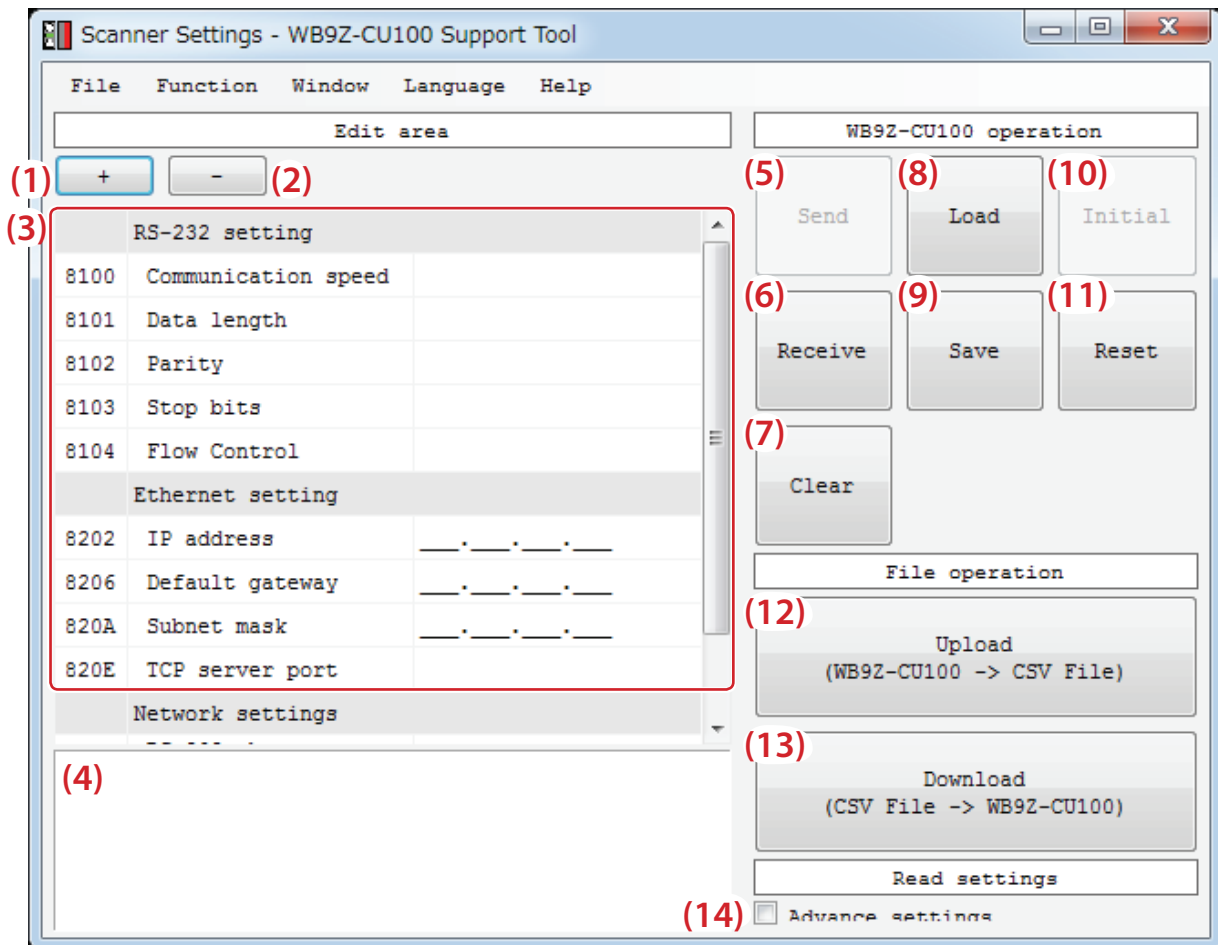


No.	Name	Description
(1)	Communication monitor	Displays communication requests and responses. Blue text: request, Red text: response
(2)	ASCII	Sets the communication monitor to the ASCII display mode.
(3)	HEX	Sets the communication monitor to the hexadecimal display mode.
(4)	Clear	Clears the communication monitor.
(5)	Get MAC address	Gets the MAC address. Sends the "Get MAC address" control command to the communication unit.
(6)	Get IP address	Gets the IP address. Sends the "Get IP address" control command to the communication unit.
(7)	Get subnet mask	Gets the subnet mask. Sends the "Get subnet mask" control command to the communication unit.
(8)	Get default gateway	Gets the default gateway. Sends the "Get default gateway" control command to the communication unit.
(9)	Get version	Gets the firmware version. Sends the "Get version" control command to the communication unit.

● Scanner settings

This screen is for checking and changing communication unit settings.

You can configure advanced settings such as communication unit RS-232 settings and Ethernet settings.



■ Edit area

No.	Name	Description
(1)	+	Displays the major and minor items on the configuration items list.
(2)	-	Displays only the major items on the configuration items list.
(3)	Configuration items list	This list is for checking and changing communication unit settings. For details on the settings, check the configuration items table in the user's manual.
(4)	Message output 3	Displays a description of the configuration item.

■ File operation

No.	Name	Description
(5)	Send	Reflects the changed setting values in the communication unit operation.
(6)	Receive	Displays the setting values set on the communication unit in configuration items list (3).
(7)	Clear	Clears the setting values displayed in configuration items list (3) from the screen.
(8)	Load	Loads the setting values from the setting value region (non-volatile).
(9)	Save	Saves the setting values to the setting value region (non-volatile).
(10)	Initial	Resets the communication unit to the factory defaults. Returns the communication unit to the factory state. (When advanced settings (14) is enabled)
(11)	Reset	Resets the communication unit power supply.

■ File operation

No.	Name	Description
(12)	Upload	Uploads all communication unit setting values to a CSV file.
(13)	Download	Downloads a CSV file created with Upload (12) to the communication unit.

■ Read settings

No.	Name	Description
(14)	Advance settings	You can select the checkbox to execute Initial (10).

Receiving and sending setting values

Follow the appropriate procedure below to receive or send setting values.

• Receiving setting values

1 Click **Receive** (No. 6).

The setting values set on the communication unit are displayed in configuration items list (3).

• Sending setting values

1 After receiving the setting values, edit them in the edit area.

2 After you finish editing them, click **Send** (No. 5).

The setting values are reflected in the communication unit operation.

3 Click the **Save setting values** (9).

Saves the setting values to the setting value region (non-volatile).



If you turn off the communication unit power supply without performing the setting value sending procedure, any setting changes you made will not be reflected in the communication unit operation. The setting values of RS-232 setting items are reflected by resetting the unit after you click the **Save setting values** (9).

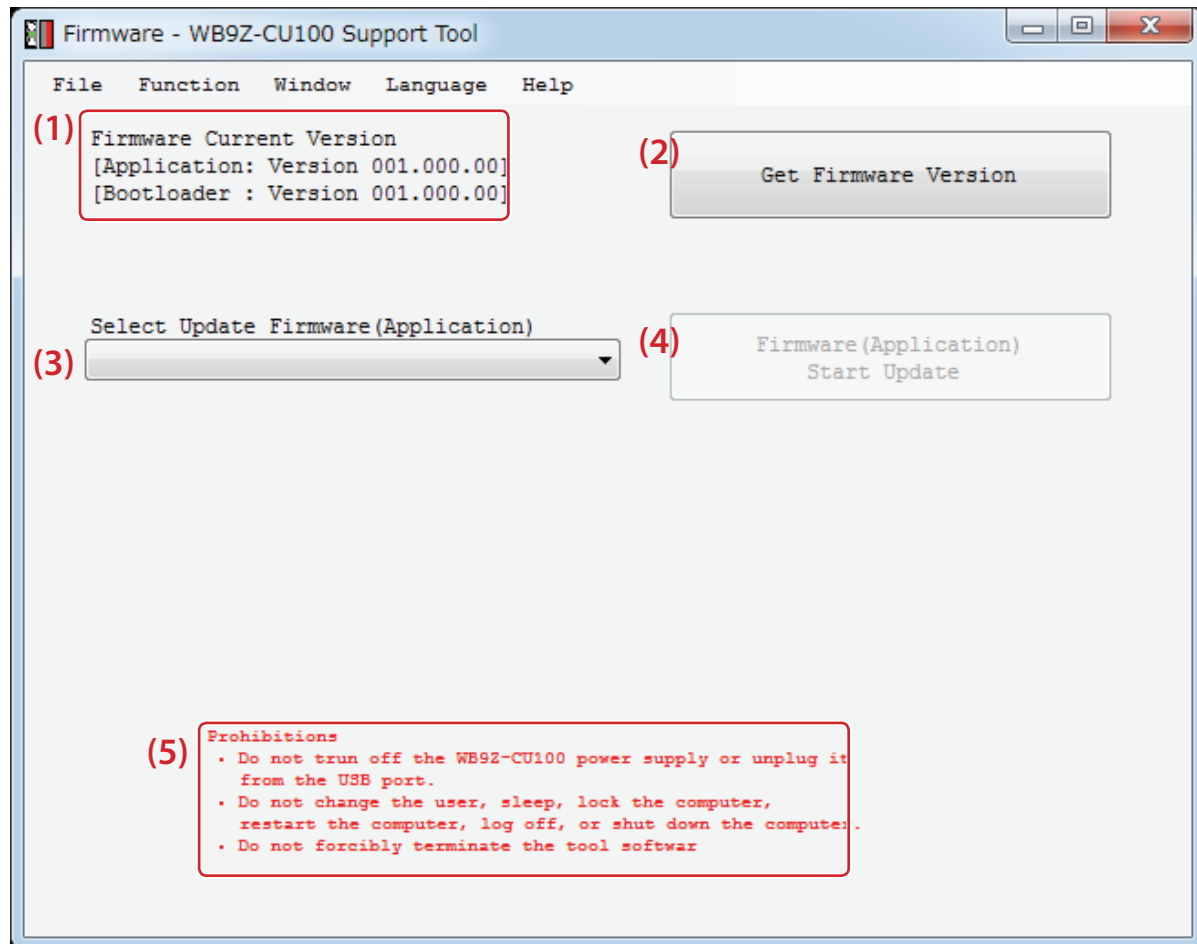
● Firmware version up

This screen is for updating the communication unit firmware.

The communication unit can be made to support new functions and to increase performance and product reliability by updating the firmware.

IDEC recommends that you use the communication unit with the latest firmware.

The firmware is available on the IDEC website <http://www.idec.com/>.



No.	Name	Description
(1)	Check version	You can check the communication unit firmware version.
(2)	Get Firmware Version	You can get the communication unit firmware version.
(3)	Select Update Firmware	Select the firmware that you want to update with.
(4)	Start Update ^{*1}	Starts updating the firmware.
(5)	Prohibitions ^{*2}	Describes the prohibitions when using this function.

*1 **Start Update** (4) is only available when **Select Update Firmware** (3) is selected.


*2 Pay careful attention to the **Prohibitions** (5) before updating the firmware.

Updating the firmware

The firmware updating method is as follows.

- 1** Select the firmware that you want to update with in **firmware selection** (No. 3).
- 2** Click **Start Update** (No. 4).
Starts updating the firmware.
- 3** Follow the on-screen instructions.



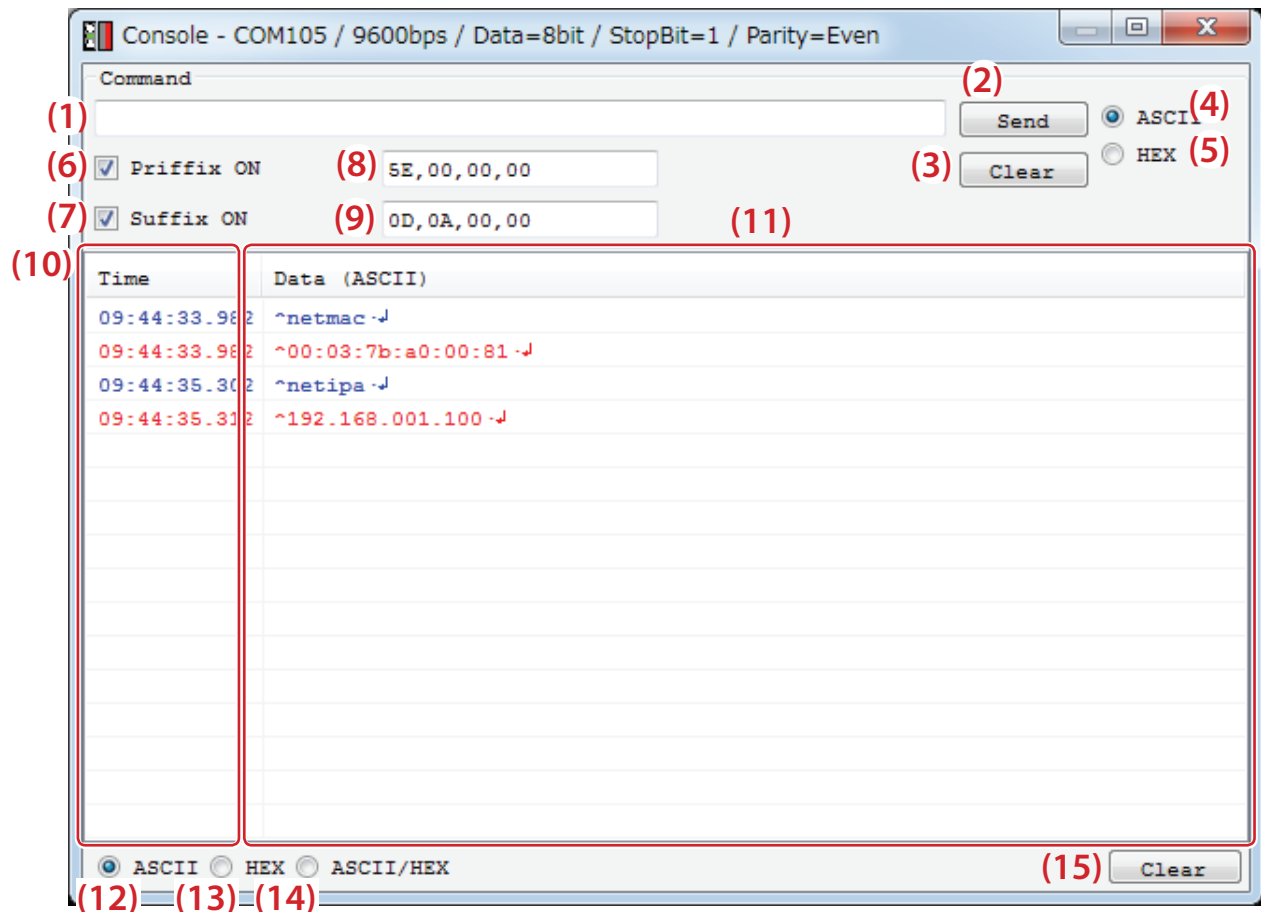
When firmware is updated, all setting value of communication unit returns in the factory shipment state. Please upload the setting value from Scanner Setting Form as necessary. For details, refer to  [\[Firmware version up\]](#) on [page 3-7](#).

3.2.3 Window

● Console

Displays the console screen.

Use this screen to manually enter commands and check detailed communication.



No.	Name	Description
(1)	Command entry field	Enter the desired command.
(2)	Send	Sends the string in the command entry field.
(3)	Clear	Clears the string in the command entry field.
(4)	ASCII	The command entry field is entered in ASCII.
(5)	HEX	The command entry field is entered in hexadecimal values.
(6)	Prifix ON	Automatically adds the communication command prefix.
(7)	Suffix ON	Automatically adds the communication command suffix.
(8)	Prefix entry field	Enter the prefix to set.
(9)	Suffix entry field	Enter the suffix to set.
(10)	Time	Displays the time of the communication requests and responses. Blue text: request, Red text: response
(11)	Communication monitor	Displays communication requests and responses. Blue text: request, Red text: response
(12)	ASCII	Displays the communication monitor as ASCII values.
(13)	HEX	Displays the communication monitor as hexadecimal values.
(14)	ASCII/HEX	Displays the communication monitor as ASCII and hexadecimal values.
(15)	Clear	Clears the communication monitor.

3.2.4 Language

- **日本語 (Japanese)**

Sets the WB9Z-CU100 Support Tool display language to Japanese.

- **English**

Sets the WB9Z-CU100 Support Tool display language to English.

- **中文 (Chinese)**

Sets the WB9Z-CU100 Support Tool display language to Chinese.

3.2.5 Help

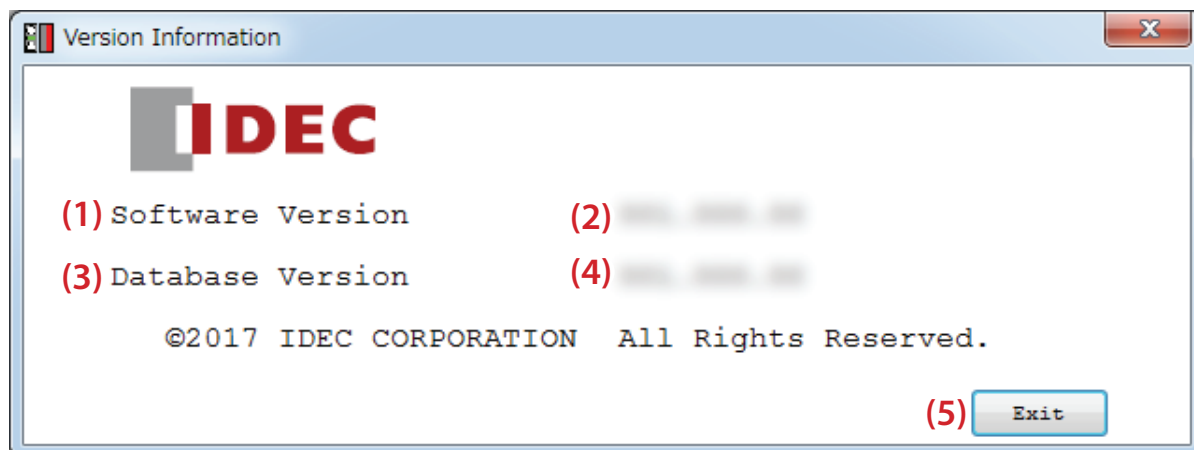
- **User's manual**

Displays the WB9Z-CU100 Support Tool user's manual (this manual).

- **Version information**

Displays version information.

The version information screen is as follows.



No.	Name	Description
(1)	Software Version	The version name.
(2)	Version display 1	Displays the software version.
(3)	Database Version	The version name.
(4)	Version display 2	Displays the database version.
(5)	Exit	Closes the version information screen.

4 Appendix

This chapter explains troubleshooting and the ASCII code table.

4.1 Troubleshooting

If a problem occurs while using the WB9Z-CU100 Support Tool, please check the following items.
If you cannot resolve the problem, contact our technical support.

4.1.1 The communication port is not displayed

■ Is the WB9Z-CU100 correctly connected?

Check if the computer and the communication unit are correctly connected.

■ Has the communication port been recognized in Device Manager?

Check communication port to which the communication unit is connected in Device Manager.

■ Is the device driver installed?

Check that the device driver has been correctly installed.

■ If the problem is not resolved by trying the above

Try the following procedure.

- 1** Exit the WB9Z-CU100 Support Tool.
- 2** Turn on the power supply for the communication unit again.
(Turn off the power supply, then turn it back on again.)
- 3** Run the WB9Z-CU100 Support Tool.



There are three systems for supplying power to the communication unit: external power, PoE, and the maintenance port (USB port).

To turn off the power supply, all three systems must be disconnected.

4.2 ASCII Code Table

Character	Decimal	Hexadecimal	Binary
NUL	0	00	00000000
SOH	1	01	00000001
STX	2	02	00000010
ETX	3	03	00000011
EOT	4	04	00000100
ENQ	5	05	00000101
ACK	6	06	00000110
BEL	7	07	00000111
BS	8	08	00001000
HT	9	09	00001001
LF / NL	10	0A	00001010
VT	11	0B	00001011
FF / NP	12	0C	00001100
CR	13	0D	00001101
SO	14	0E	00001110
SI	15	0F	00001111
DLE	16	10	00010000
DC1	17	11	00010001
DC2	18	12	00010010
DC3	19	13	00010011
DC4	20	14	00010100
NAK	21	15	00010101
SYN	22	16	00010110
ETB	23	17	00010111
CAN	24	18	00011000
EM	25	19	00011001

Character	Decimal	Hexadecimal	Binary
SUB	26	1A	00011010
ESC	27	1B	00011011
FS	28	1C	00011100
GS	29	1D	00011101
RS	30	1E	00011110
US	31	1F	00011111
(SP)	32	20	00100000
!	33	21	00100001
"	34	22	00100010
#	35	23	00100011
\$	36	24	00100100
%	37	25	00100101
&	38	26	00100110
'	39	27	00100111
(40	28	00101000
)	41	29	00101001
*	42	2A	00101010
+	43	2B	00101011
,	44	2C	00101100
-	45	2D	00101101
.	46	2E	00101110
/	47	2F	00101111
0	48	30	00110000
1	49	31	00110001
2	50	32	00110010
3	51	33	00110011
4	52	34	00110100
5	53	35	00110101
6	54	36	00110110
7	55	37	00110111
8	56	38	00111000
9	57	39	00111001
:	58	3A	00111010

Character	Decimal	Hexadecimal	Binary
;	59	3B	00111011
<	60	3C	00111100
=	61	3D	00111101
>	62	3E	00111110
?	63	3F	00111111
@	64	40	01000000
A	65	41	01000001
B	66	42	01000010
C	67	43	01000011
D	68	44	01000100
E	69	45	01000101
F	70	46	01000110
G	71	47	01000111
H	72	48	01001000
I	73	49	01001001
J	74	4A	01001010
K	75	4B	01001011
L	76	4C	01001100
M	77	4D	01001101
N	78	4E	01001110
O	79	4F	01001111
P	80	50	01010000
Q	81	51	01010001
R	82	52	01010010
S	83	53	01010011
T	84	54	01010100
U	85	55	01010101
V	86	56	01010110
W	87	57	01010111
X	88	58	01011000
Y	89	59	01011001
Z	90	5A	01011010
[91	5B	01011011
\	92	5C	01011100
]	93	5D	01011101
^	94	5E	01011110
_	95	5F	01011111
`	96	60	01100000
a	97	61	01100001
b	98	62	01100010

Character	Decimal	Hexadecimal	Binary
c	99	63	01100011
d	100	64	01100100
e	101	65	01100101
f	102	66	01100110
g	103	67	01100111
h	104	68	01101000
i	105	69	01101001
j	106	6A	01101010
k	107	6B	01101011
l	108	6C	01101100
m	109	6D	01101101
n	110	6E	01101110
o	111	6F	01101111
p	112	70	01110000
q	113	71	01110001
r	114	72	01110010
s	115	73	01110011
t	116	74	01110100
u	117	75	01110101
v	118	76	01110110
w	119	77	01110111
x	120	78	01111000
y	121	79	01111001
z	122	7A	01111010
{	123	7B	01111011
	124	7C	01111100
}	125	7D	01111101
~	126	7E	01111110
DEL	127	7F	01111111

DEL indicates a control character.

(SP) indicates a space character.

The other characters indicate graphic characters.

Index

A

ASCII Code Table.....4-2

C

Checking the IP address 2-4

Chinese.....3-10

Connecting the WB9Z-CU100 to the computer.....2-3

Connection of USB connector2-3

Connection setting load3-2

Connection settings.....3-3

Connection setting save3-2

Console 3-9

Control command.....3-4

E

English.....3-10

Exit.....3-2

F

File3-2

Firmware version up.....3-7

Function.....3-3

H

Help3-10

How to check the communication port.....2-4

I

Installing the device driver.....2-3

Installing the WB9Z-CU100 Support Tool2-2

J

Japanese.....3-10

L

Language.....3-10

M

Menu items list3-1

O

Operation confirmation method2-3

Overview 1-1

R

Receiving and sending setting values3-6

Running the WB9Z-CU100 Support Tool 2-4

S

Scanner settings 3-5

Software End User License Agreement.....ii

System requirements.....2-1

T

The communication port is not displayed4-1

Troubleshooting4-1

U

Uninstalling the WB9Z-CU100 Support Tool2-2

Updating the firmware.....3-8

Usage precautions 1-1

User's manual3-10

V

Version information3-10

W

WB9Z-CU100 Support Tool setup.....2-2

Window.....3-9

Revision history

Edition	Published	Revised content	
		Page	Points
1st	2017.5		

Communication Unit Supporting Code Scanner WB9Z-CU100

Support Tool User's Manual

- B-1968(0)
- Published: May 2017 1st edition
- 6-64, Nishi-Miyahara 2-Chome, Yodogawa-ku, Osaka, Japan

IDEC CORPORATION © 2017 IDEC CORPORATION All Rights Reserved.

- The specifications and content in this manual may be changed without prior notification.
- Reproduction of this manual without prior permission is prohibited. All rights reserved.

IDEC CORPORATION

 www.idec.com

Head Office

6-64, Nishi-Miyahara-2-Chome, Yodogawa-ku, Osaka 532-0004, Japan

USA	IDEC Corporation	Tel: +1-408-747-0550	opencontact@idec.com	Hong Kong	IDEC Izumi (H.K.) Co., Ltd.	Tel: +852-2803-8989	info@hk.idec.com
Australia	IDEC Australia Pty. Ltd.	Tel: +61-3-8523-5900	sales@au.idec.com	China/Shanghai	IDEC (Shanghai) Corporation	Tel: +86-21-6135-1515	idec@cn.idec.com
Germany	IDEC Electrotechnik GmbH	Tel: +49-40-25 30 54 - 0	service@eu.idec.com	China/Shenzen	IDEC (Shenzen) Corporation	Tel: +86-755-8356-2977	idec@cn.idec.com
Singapore	IDEC Izumi Asia Pte. Ltd.	Tel: +65-6746-1155	info@sg.idec.com	China/Beijing	IDEC (Beijing) Corporation	Tel: +86-10-6581-6131	idec@cn.idec.com
Thailand	IDEC Asia (Thailand) Co., Ltd	Tel: +66-2-392-9765	sales@th.idec.com	Japan	IDEC Corporation	Tel: +81-6-6398-2527	marketing@idec.co.jp
Taiwan	IDEC Taiwan Corporation	Tel: +886-2-2698-3929	service@tw.idec.com				

Specifications and other descriptions in this brochure are subject to change without notice.
2017 IDEC Corporation, All Rights Reserved.

B-1968(0) MAY 2017





IDEC CORPORATION