

# Customer Information Sheet

DRAWING No.: M80-2060005

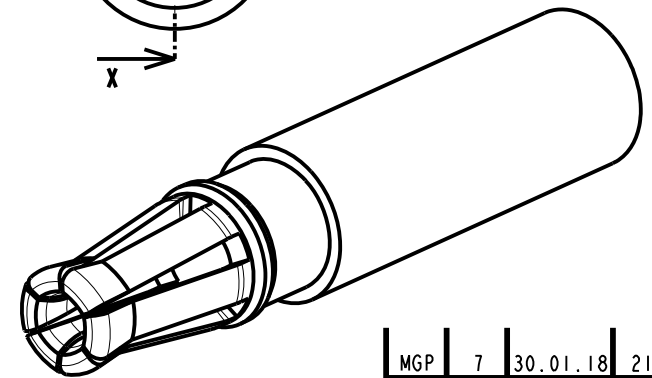
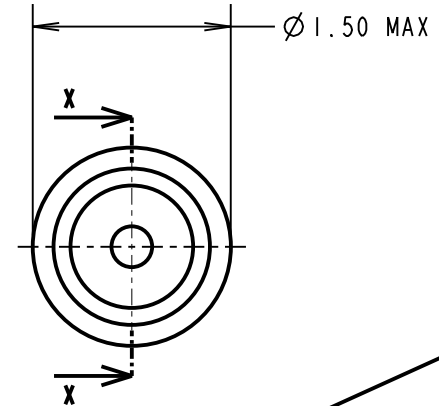
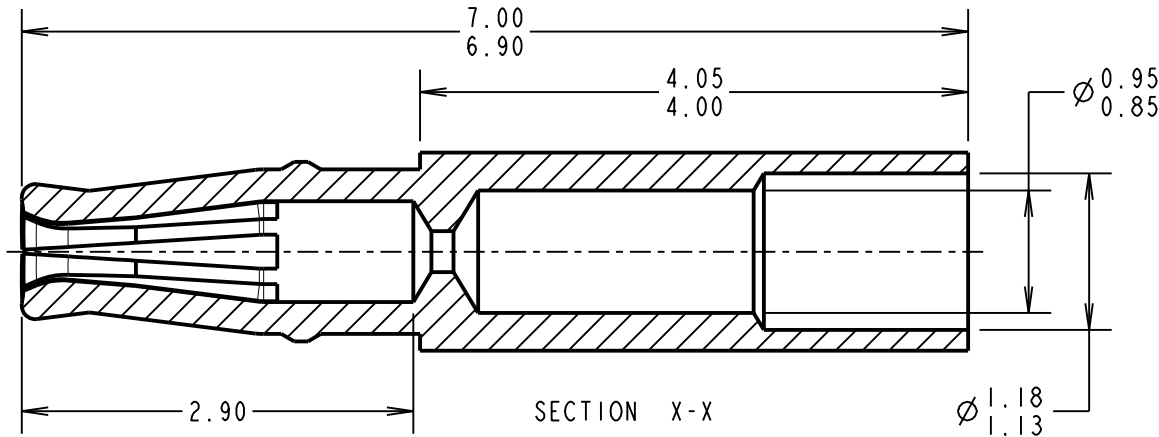
IF IN DOUBT - ASK



NOT TO SCALE

THIRD ANGLE PROJECTION

ALL DIMENSIONS IN mm



**SPECIFICATION:**

**MATERIAL:**

BERYLLIUM COPPER

**FINISH:**

0.76-1.00µm GOLD OVER 1.5-2.5µm NICKEL

**MECHANICAL:**

INSERTION FORCE = 4.0N MAX

WITHDRAWAL FORCE = 0.5N MIN

DURABILITY = 1000 OPERATIONS

**ENVIRONMENTAL:**

OPERATING TEMPERATURE = -55°C TO +125°C

FOR COMPLETE CONNECTOR SPECIFICATION, SEE COMPONENT SPECIFICATION COO5XX (LATEST ISSUE).

**NOTES:**

- SUITABLE FOR WIRE GAUGE 22AWG. MAXIMUM INSULATION DIAMETER 1,10mm, BS3G210 TYPE A RECOMMENDED.
- RECOMMENDED HAND CRIMP TOOL = M22520/2-01 WITH POSITIONER Z80-444.
- FOR INSTRUCTIONS ON HAND CRIMP TOOL M22520/2-01, SEE INSTRUCTION SHEET IS-01.
- PACKING: 100 PIECES PER BAG.
- PATENT PENDING: GB 1616011.1.

MGP	7	30.01.18	21057
NAME	ISS.	DATE	C/NOTE
APPROVED: MGP			
CHECKED: SB			
DRAWN: M.PERREN			
CUSTOMER REF.:			
ASSEMBLY DRG:			

**HARWIN**

www.harwin.com  
technical@harwin.com

THIS DRAWING AND ANY INFORMATION OR DESCRIPTIVE MATTER SET OUT HEREON ARE CONFIDENTIAL AND COPYRIGHT PROPERTY OF THE HARWIN GROUP AND MUST NOT BE DISCLOSED, LOANED, COPIED OR USED FOR MANUFACTURING, TENDERING OR FOR ANY OTHER PURPOSE WITHOUT THEIR WRITTEN PERMISSION.

**TOLERANCES**

X. = ±1mm  
X.X = ±0.50mm  
X.XX = ±0.10mm  
X.XXX = ±0.01mm

ANGLES = ±5°  
UNLESS STATED

**MATERIAL:**

SEE ABOVE

**FINISH:**

SEE ABOVE

**S/AREA:**

51.2 mm<sup>2</sup>

**TITLE:**

T-CONTACT FEMALE 22AWG CRIMP

**DRAWING NUMBER:**

M80-2060005

SHT  
2 OF 2