

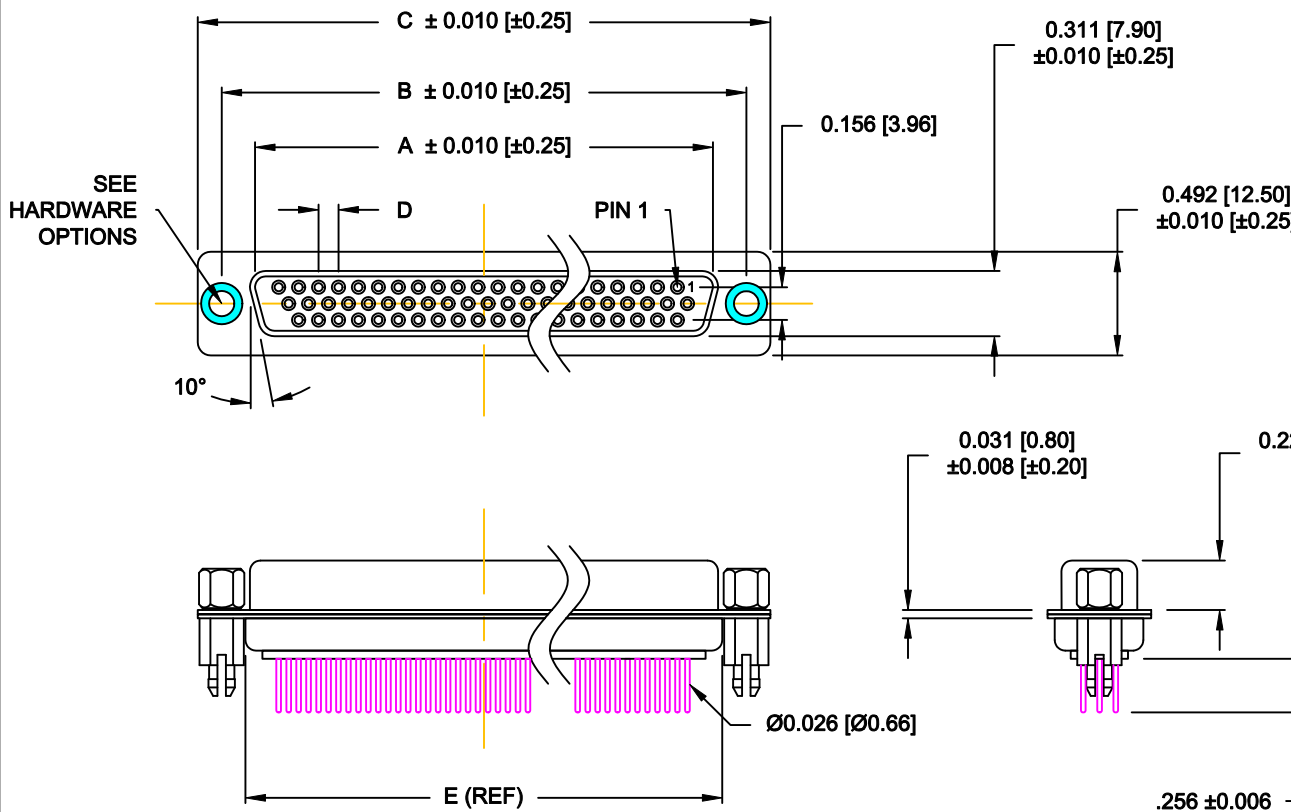
DESCRIPTION: HIGH DENSITY - MACHINED CONTACTS - VERTICAL

MATERIALS AND FINISH:

SHELL: STEEL MATERIAL, NICKEL FINISH
 INSULATOR: (SEE CHART) = 260°C,
 UL 94V-0 RATED, BLACK
 CONTACT MATERIAL: COPPER ALLOY
 CONTACT FINISH: SELECT GOLD PLATING

ELECTRICAL:

CONTACT CURRENT RATING: 5 AMPS
 CONTACT RESISTANCE: 10 Milliohms Max.
 DIELECTRIC WITHSTANDING VOLTAGE: 1,000VAC Min.
 INSULATION RESISTANCE: 5 GOHMS Min.
 TEMPERATURE RATING: -55° ~ +125° C



180-MYY-21YRYYY

- SERIES _____
- MACHINED CONTACTS _____
- POSITIONS _____
- 015 _____
- 026 _____
- 044 _____
- 062 _____
- GENDER _____
- 2 = FEMALE
- X = CONTACT LENGTH _____
- 1 = 0.256"
- A = 0.140"
- SHELL PLATING _____
- 3 = NICKEL
- RoHS COMPLIANT (260°C) _____
- HARDWARE OPTIONS _____
- 00 = NO HARDWARE, Ø.120" HOLE
- 01 = .098" CLINCH NUT (BOARD SIDE)
- 02 = .250" CLINCH NUT (BOARD SIDE)
- 03 = .250" CLINCH NUT (MATING SIDE)
- 05 = .224" 4-40 BOARD LOCK
- 08 = .228" BOARD LOCK, BOARD SIDE
- 90 = .224" 4-40 BOARD LOCK FOR 0.093" BOARD MAX.
- 91 = .224" 4-40 SPACER/BOARD LOCK
- 92 = .224" 4-40 SPACER/BOARD LOCK FOR 0.093" BOARD MAX.
- PLATING OPTIONS _____
- 1 = GOLD FLASH, ENTIRE CONTACT
- 2 = 30u" GOLD, ENTIRE CONTACT
- 3 = 50u" GOLD, ENTIRE CONTACT

DIMENSIONS (IN.)						
No. OF PINS	A	B	C	D	E	INSULATOR MATERIAL
15	0.642	0.984	1.213	0.090	0.756	PA9T
	16.30	25.00	30.80	2.29	19.20	
26	0.969	1.311	1.543	0.090	1.091	PA9T
	24.60	33.30	39.20	2.29	27.70	
44	1.512	1.852	2.089	0.090	1.618	PA9T
	38.40	47.05	53.05	2.29	41.10	
62	2.159	2.500	2.732	0.095	2.256	PA6T
	54.84	63.50	96.40	2.41	57.30	

DO NOT SCALE FROM DRAWING



THESE DRAWINGS AND SPECIFICATIONS ARE THE PROPERTY OF NorComp AND SHALL NOT BE REPRODUCED, COPIED OR USED AS THE BASIS FOR THE MANUFACTURE OF SALE OF APPARATUS WITHOUT WRITTEN PERMISSION.

DRAWN: C. SMITH		DATE: 03-16-07	
CHECKED:		DATE:	
SCALE: 1:1	SHEET 1 OF 3	REV 14	
DWG NO. 180-MYY-21YRYYY			

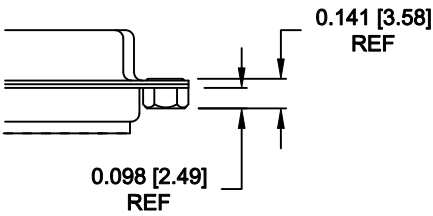
RoHS COMPLIANT

NorComp

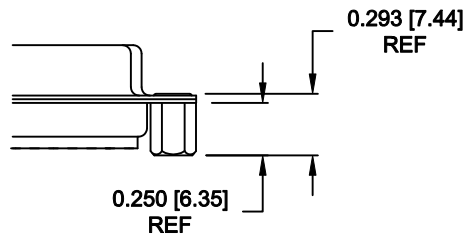
ALL CLINCH-NUTS ARE 4-40 INTERNAL THREADS

TOLERANCE:
ALL DIMENSIONS ARE ±0.010

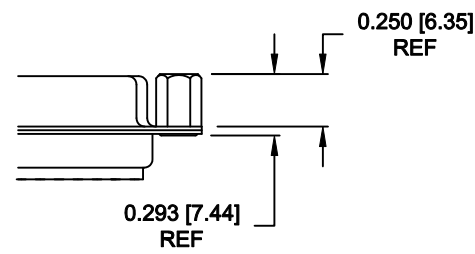
01X 0.098" (BOARD SIDE) - CN1



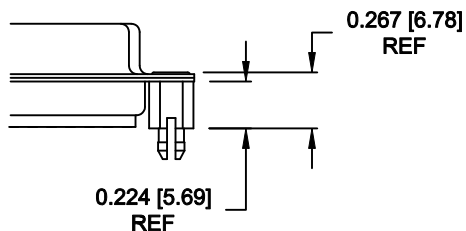
02X 0.250" (BOARD SIDE) - CN2



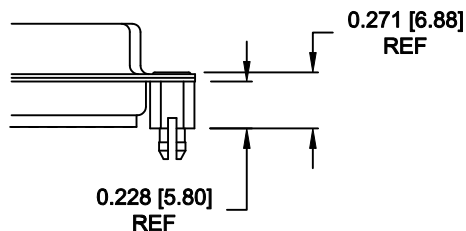
03X..... 0.250" (MATING SIDE) - CN8



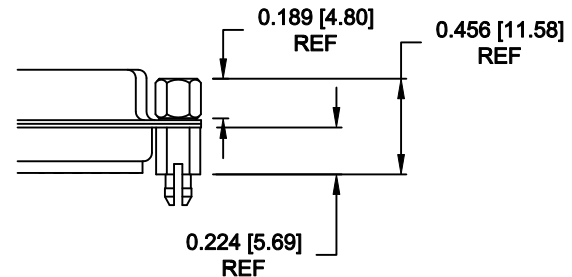
05X 0.224" BOARD SIDE - CN10



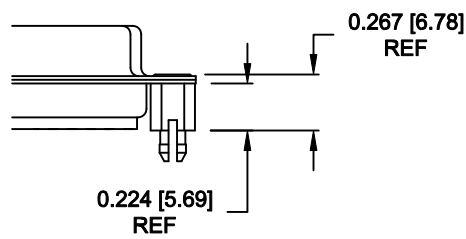
08X 0.228" BOARD SIDE - CN10



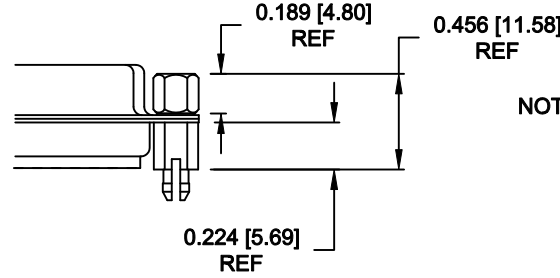
91X 0.224" BOARD SIDE
0.189 MATING SIDE
CN10/SFSO4404



90X 0.224" BOARD SIDE - CN10



92X 0.224" BOARD SIDE
0.189 MATING SIDE
CN10/SFSO4404




NOTE: 4-40 FEMALE SCREW LOCK IS REMOVABLE

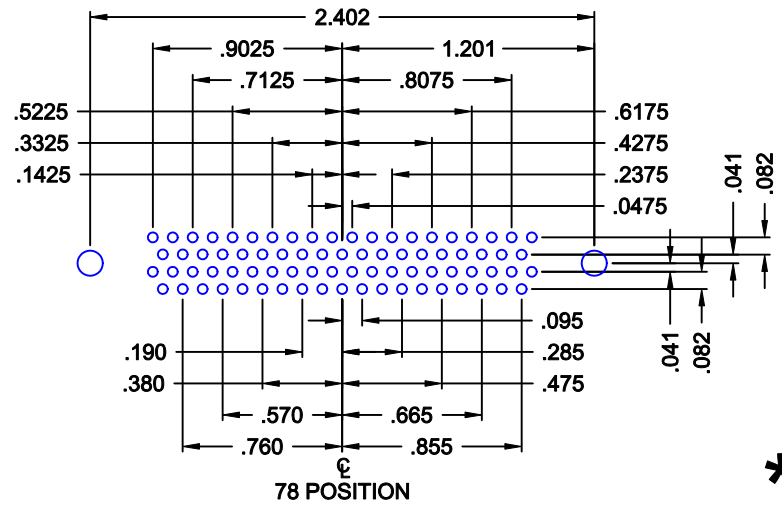
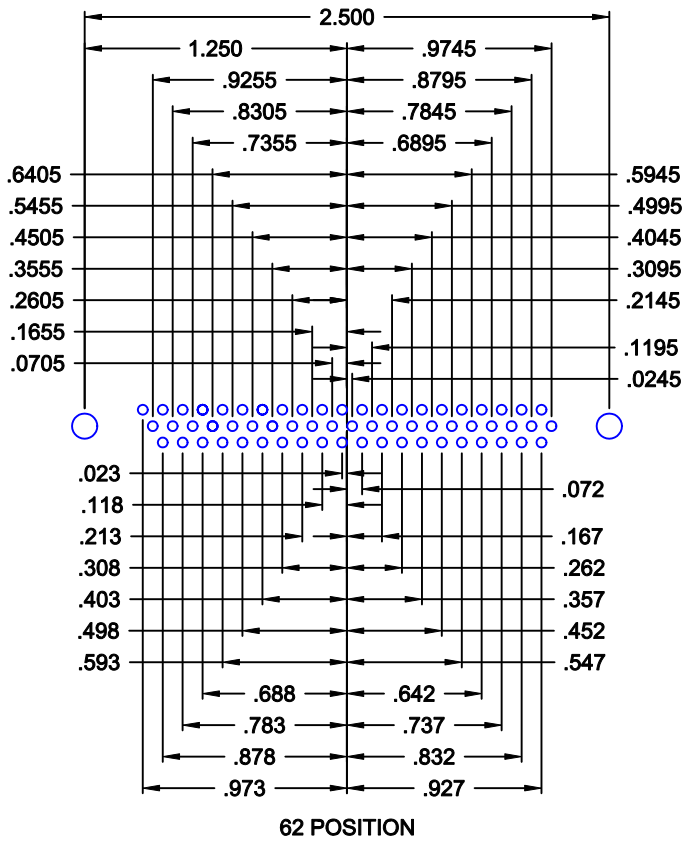
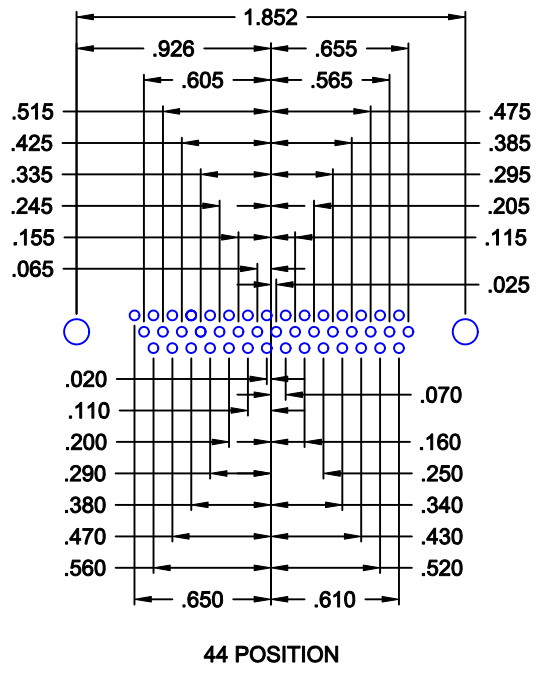
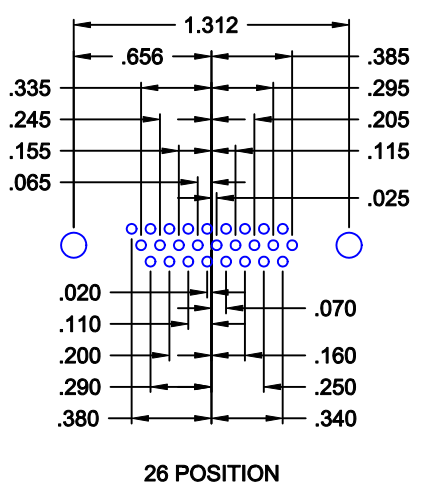
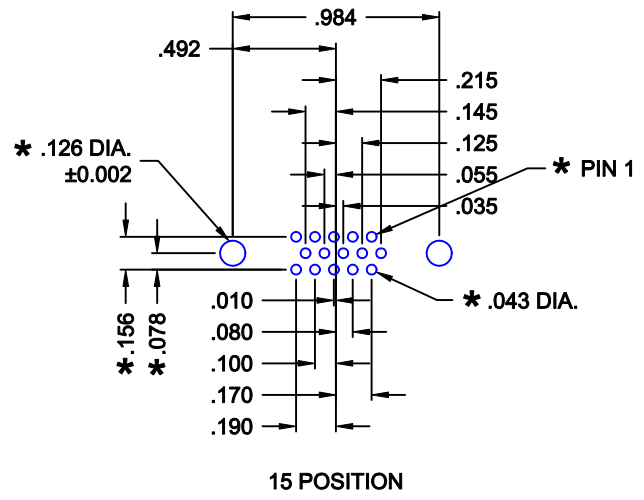
NOTE: 4-40 FEMALE SCREW LOCK IS REMOVABLE

NOTE: 90 & 92 OPTION FOR 0.093" MAX. BOARD THICKNESS

DO NOT SCALE FROM DRAWING

RoHS COMPLIANT

	THESE DRAWINGS AND SPECIFICATIONS ARE THE PROPERTY OF NorComp AND SHALL NOT BE REPRODUCED, COPIED OR USED AS THE BASIS FOR THE MANUFACTURE OF SALE OF APPARATUS WITHOUT WRITTEN PERMISSION.		DRAWN: C. SMITH	DATE: 02-12-08
			CHECKED:	DATE:
<h1>NorComp</h1>		SCALE:	SHEET 2 OF 3	REV 14
		DWG NO. 180-MYY-21YRYYY		



* TYP. ON ALL SIZES

DO NOT SCALE FROM DRAWING

	THESE DRAWINGS AND SPECIFICATIONS ARE THE PROPERTY OF NorComp AND SHALL NOT BE REPRODUCED, COPIED OR USED AS THE BASIS FOR THE MANUFACTURE OF SALE OF APPARATUS WITHOUT WRITTEN PERMISSION.		DRAWN: C. SMITH	DATE: 03-16-07
			CHECKED:	DATE:
NorComp		SCALE: 1 : 1	SHEET 3 OF 3	REV 14
		DWG NO. 180-MYY-21YRYYY		