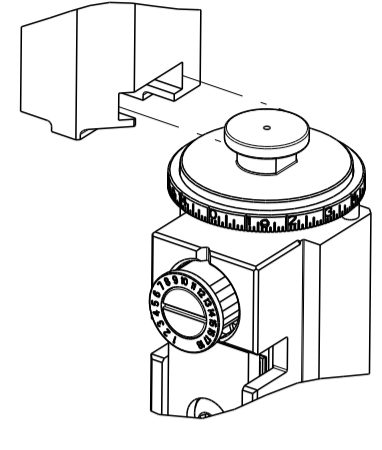


PART NUMBER	REVISION	DESCRIPTION	FEED TYPE	CONVERT TO						
				PART NUMBERS REQUIRED						
2266607-1	A	FINE CRIMP HEIGHT ADJUST	MECHANICAL	PNEUMATIC FEED	2119950-1	1338685-1	5-18022-5	2119641-1	2119799-1	2063440-1
				SERVO LATCH PLATE	2119951-1	-	8-2266607-5	1901094-3	-	2168400-6 (QUANTITY 2)
				SMART APPLICATOR	2161326-1	-	8-2266607-4	-	-	-
				MECHANICAL FEED	2119949-1	1338685-1	5-18022-5	2119653-1	-	-
2266607-2	A	FINE CRIMP HEIGHT ADJUST	PNEUMATIC	SERVO LATCH PLATE	2119951-1	-	8-2266607-5	1901094-3	-	2168400-6 (QUANTITY 2)
				SMART APPLICATOR	2161326-1	-	8-2266607-4	-	-	-
				MECHANICAL FEED	2119949-1	1338685-1	5-18022-5	2119653-1	-	-
2266607-5	A	FINE CRIMP HEIGHT ADJUST	SERVO LATCH PLATE	PNEUMATIC FEED	2119950-1	1338685-1	5-18022-5	2119641-1	2119799-1	2063440-1
				-	-	-	-	-	-	-
2266607-6	A	NON-CRIMP HEIGHT ADJUST	SERVO LATCH PLATE	-	-	-	-	-	-	-
2266607-7	A	FINE CRIMP HEIGHT ADJUST	NONE	-	-	-	-	-	-	-
7-2266607-7	A	CRIMP TOOLING KIT	-	-	-	-	-	-	-	-



APPLICATOR DATA		
CRIMP	SIZE	TYPE
WIRE	1.85 mm [.073]	F
INSUL	2.54 mm [1.00]	F

APPLICATOR INSTRUCTIONS 408-10389

TERMINAL DATA: DELPHI TERMINAL	DELPHI CRIMP SPECIFICATION		
TERMINAL NAME: CTS 2.8MM ASSEMBLY			
WIRE STRIP LENGTH	INSULATION DIAMETER RANGE		
3.62-4.38 mm [1.43-.172 IN]	Ø1.40-2.10 mm [0.055-.083 IN]		
TERMINAL APPLICATION SPECIFICATION	15457850 Rev 01		
TERMINALS APPLIED			
TE TERMINAL	DELPHI TERMINAL	TE TERMINAL	DELPHI TERMINAL
2113630-1	15457848		

WIRE SIZE	CRIMP HEIGHT mm [INCH]	CRIMP HEIGHT REFERENCE SETTING
1.00mm2	1.40 +/- 0.05 [0.055 +/- .002]	7.4
0.75mm2	1.35 +/- 0.05 [0.053 +/- .002]	7.9
0.50mm2	1.25 +/- 0.05 [0.049 +/- .002]	8.9

- RECOMMENDED SPARE PARTS
- GREASE BEARING SURFACES LIGHTLY
- LUBRICATE DAILY PER THE APPLICATOR INSTRUCTION SHEET SUPPLIED WITH THE APPLICATOR.
- APPLICATOR SPECIFIC DATA TO BE ENTERED INTO BLANK MEMORY CHIP AT ASSEMBLY. SEE BELOW FOR PART NUMBER:
 MECHANICAL FEED WITH "SMART APPLICATOR" CONVERSION: 8-2266607-4
 PNEUMATIC FEED WITH "SMART APPLICATOR" CONVERSION: 8-2266607-4
 SERVO FEED WITH "FINE CRIMP HEIGHT ADJUST": 8-2266607-5
 SERVO FEED WITH "NON-CRIMP HEIGHT ADJUST": 8-2266607-6
- ADJUSTMENT OF THE STRIPPER MAY BE REQUIRED WHEN MOVING THE APPLICATOR BETWEEN BENCH AND LEADMAKER APPLICATIONS.
- APPLY PART NUMBER 1-23419-5 LOCTITE TO THREADS OF ITEM 62. APPLY PART NUMBER 2-23419-6 LOCTITE TO THREADS OF ITEM 242. FOR -6 ONLY APPLY PART NUMBER 1-23419-5 LOCTITE TO THREADS OF ITEM 37.
- GREASE THREADS, GROOVE AND O-RING ON ITEMS 35 & 252.
- MAGNET, ITEM 166 MUST BE ORIENTED CORRECTLY IN ORDER TO PROPERLY ACTUATE THE COUNTER.
- CRIMP HEIGHT REFERENCE SETTING WAS THE SETTING USED WHEN THE APPLICATOR WAS QUALIFIED AT THE FACTORY. ADJUSTMENT MAY BE NECESSARY WHEN RUNNING APPLICATOR IN THE FIELD.
- SPARE FEED CAM STORAGE LOCATION REFER TO INSTRUCTION SHEET FOR ADDITIONAL INFORMATION.
- TO CONVERT THE APPLICATOR TO A NON-CARRIER CUTTING STYLE, REMOVE ITEM 13 AND ATTACH TO THE LOCATION ON THE BACK SIDE OF THE HOUSING. REFER TO INSTRUCTION SHEET FOR ADDITIONAL INFORMATION.
- WHEN ASSEMBLING A NON CRIMP HEIGHT ADJUST APPLICATOR (-6) USE SHIMS FROM ITEM 260 TO ACHIEVE A NOMINAL SHIM HEIGHT OF 4.40.

***WARNING**
ON INSTALLATION, SET WIRE DISC, ITEM 40 TO LARGEST WIRE SIZE SETTING. USE OF SETTINGS BELOW MINIMUM REQUIRED CRIMP HEIGHT SETTING WILL CAUSE DAMAGE TO CRIMP TOOLING.

-77	-7	-6	-5	-2	-1	PART NO	DESCRIPTION	ITEM NO
-	-	1	-	-	-	2119957-2	APPLICATOR SHIM PACK	260

ATLANTIC VERSION
Shown on sheets 1 of 4 & 2 of 4
(Pacific version shown on sheets 3 of 4 & 4 of 4)

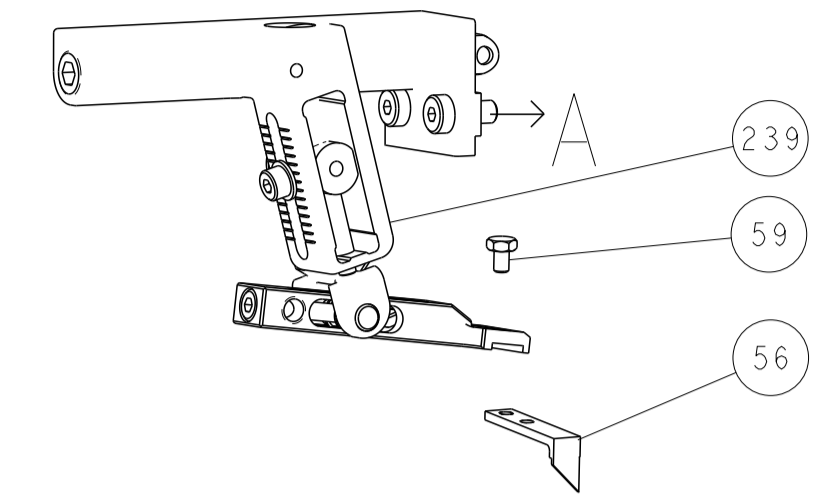
SET UP GAUGE	LOC	DIST	REVISIONS					
2119599-1	A	66	P	LTN	DESCRIPTION	DATE	DWN	APVD
			A		RELEASED	24FEB2015	MR	TE

8-21084-0	O-RING, .676 ID, .070 DIA. MAT.	252
2119640-1	PUSH ROD, AIR FEED	250
2079988-1	BUSHING, LCH5-12, MISUMI	249
2119641-1	FEED CAM, AIR FEED	248
2119798-1	DETENT PIN	247
1-22279-3	SPRING, COMPRESSION	246
2119758-1	RAM, AMP STYLE, SIDE FEED, NON-ADJ.	245
2119082-4	CAM, SNAIL, INSULATION ADJUSTMENT	244
2079764-1	WASHER, WAVE SPRING, CREST-TO-CREST	243
2119083-1	RETAINER, INSULATION DIAL	242
7-18023-7	SCR, SKT HD CAP M3 X 4.0	241
2168400-6	SHCS, LOW HEAD, RoHS, M5 X 16	240
2119580-1	MECHANICAL FEED ASSEMBLY	239
2063440-1	AIR FEED MODULE	238
2119740-2	TAG, IDENTIFICATION	213
1901094-3	SPACER, FEEDER	198
21045-3	RING, RETAIN, EXTERN, 3/16 CRESCENT	172
994969-1	MAGNET, RARE EARTH HIGH ENERGY	166
994970-2	COUNTER, MAGNETIC	164
240638-1	SPRING, FEED FINGER	163
3-23627-7	PIN, RETAIN, GRVD, 3/16 X .854	137
2119799-1	HOLDER, FEED FINGER, AF	136
SEE NOTE 4	MEMORY CHIP, PROGRAMMED	135
1633743-1	SERVO FEED LATCH ASM	133
2119944-1	FEED FINGER ASSEMBLY, SF	117
455888-7	SPACER, CRIMPER	82
2119956-1	DOCUMENTATION PACKAGE	71
2119740-1	TAG, IDENTIFICATION	67
2168078-1	SCREW, DRIVE, RH, RoHS, 2 x .188	66
2119793-1	LIMITER, ADJUSTMENT BOLT	63
992763-5	SCR, SET, SOC, CONE POINT, M3 x 4.0	62
2079383-4	SCR, BHSC, RoHS (M4 X 8)	60
5-18022-5	SCR, HEX HD CAP, M4 X 6.0	59
1338685-1	PAWL, FEED	56
2168400-1	SHCS, LOW HEAD, RoHS, M4 X 12	54
1-2168083-0	SCR, SKT HD CAP, RoHS, M4 X 10	53
5018030-1	NUT, HEX, REG, RoHS, M3	52
811242-5	BUMPER, HOLD DOWN	51
690753-2	SPACER, TONKER	50
18023-9	SCR, SKT HD CAP M4 X 6.0	49
2119652-1	FEED CAM, PRE FEED	48
2119653-1	FEED CAM, POST FEED	47
2119656-9	APPLICATOR BASIC ASSEMBLY, SF	46
2119370-1	RAM, AMP STYLE, SIDE FEED	44
2079383-7	SCR, BHSC, RoHS (M8 X 25)	41
2119645-1	DISC, NUMBERED FA WIRE ADJUSTMENT	40
2119957-1	APPLICATOR SHIM PACK	39
1-2119644-2	RAM WASHER, PRECISION	38
2119085-1	FA HEAD, ATLANTIC STYLE	37
2119092-1	BOLT, ADJUSTMENT	35
1-1752356-7	SUPPORT, TERMINAL	34
2079383-5	SCR, BHSC, RoHS (M4 X 20)	33
2161328-1	HEX HEAD, FLANGED, M5 x 8mm LONG	32
1320908-3	SPACER, STRIP GUIDE	30
2119959-1	ASSEMBLY, STRIP GUIDE	29
455888-3	SPACER, CRIMPER	28
1320928-2	STRIP GUIDE	24
2168083-2	SCR, SKT HD CAP, RoHS, M4 X 8.0	21
1-18028-2	WASHER, FLAT, REG M4	20
2119533-1	STRIPPER, SIDE FEED	19
2119806-1	INSERT, SHEAR	13
3-22280-3	SPRING, COMPRESSION	12
1-356885-4	STOP, SHEAR	11
2119805-1	SHEAR HOLDER, FRONT	10
1803095-1	FLOATING SHEAR, FRONT	9
7-1803054-4	ANVIL, COMBINATION	8
-	-	7
-	-	6
2119757-8	DEPRESSOR, SHEAR	5
238011-4	BLOCK, CRIMPER SPACER	4
7-1633962-9	CRIMPER, INSULATION F PREMIUM	3
455888-3	SPACER, CRIMPER	2
4-1633860-4	CRIMPER, WIRE	1

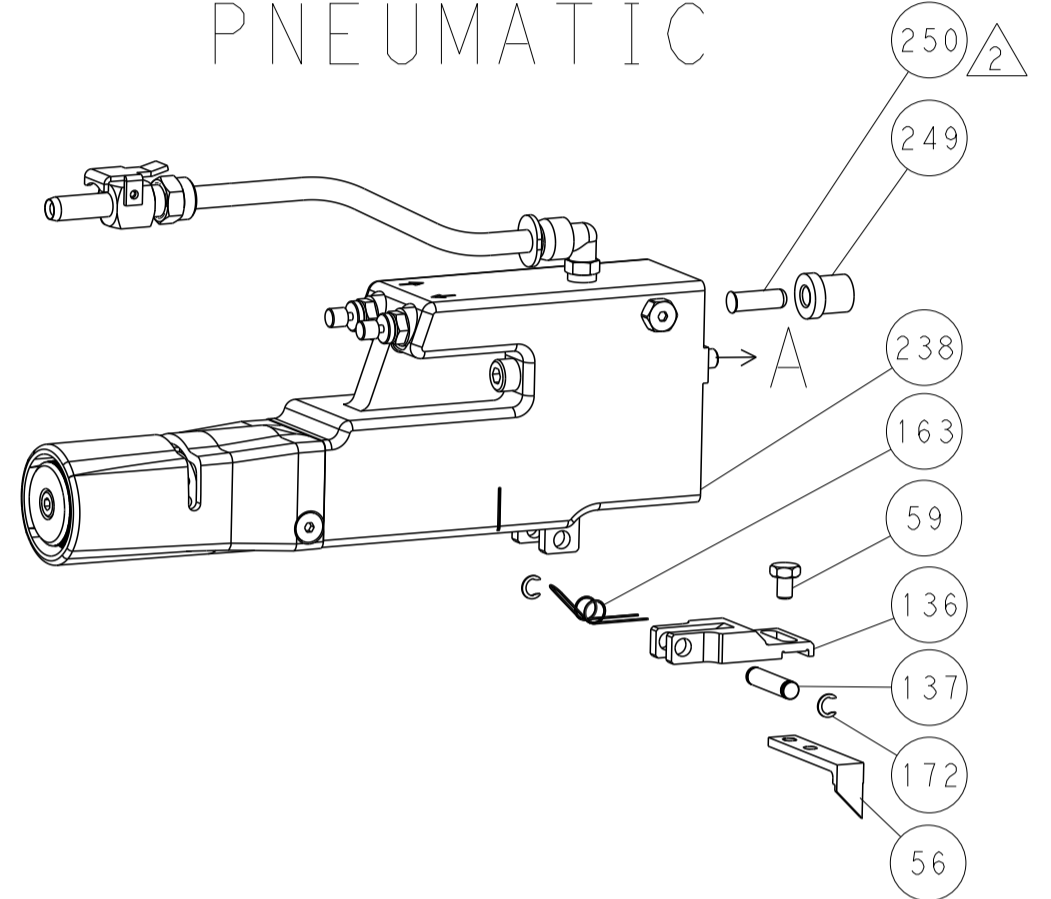
DIMENSIONS:		TOLERANCES UNLESS OTHERWISE SPECIFIED:		OWN	12MAR2014
mm	0 PLC ±.5	1 PLC ±0.5	2 PLC ±0.13	CHK	12MAR2014
	3 PLC ±0.013	4 PLC ±0.0001	ANGLES ±.0001	APVD	12MAR2014
MATERIAL	FINISH	WEIGHT	SCALE	NAME	
-	-	-	1:2	Ocean Side Feed Applicator	
Customer Accessible Production Drawing		SIZE	CAGE CODE	DRAWING NO	RESTRICTED TO
		A1	00779	©=2266607	-
		SHEET	1	OF	4
		REV	A		

LOC		DIST		REVISIONS			
A	66	P	LTM	DESCRIPTION	DATE	DWN	APVD
-	-	-	-	SEE SHEET 1	-	-	-

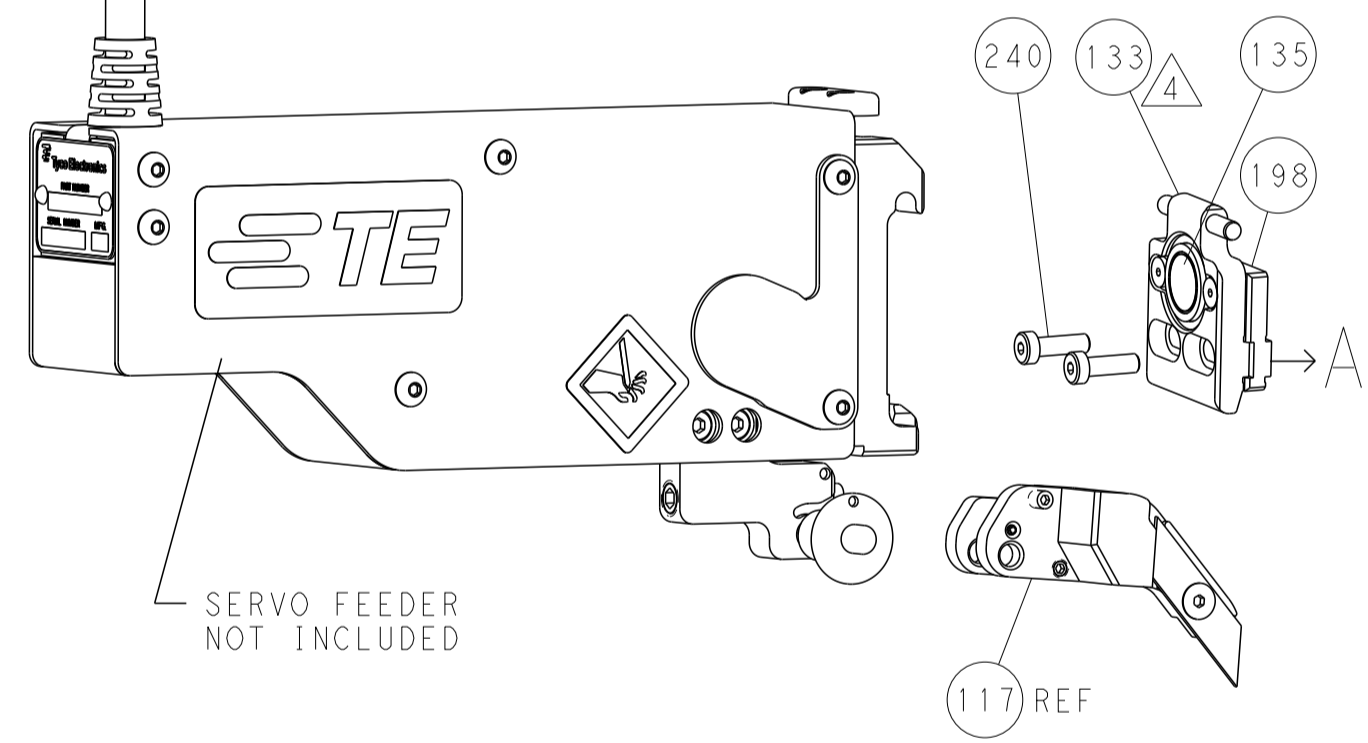
FEED TYPE MECHANICAL



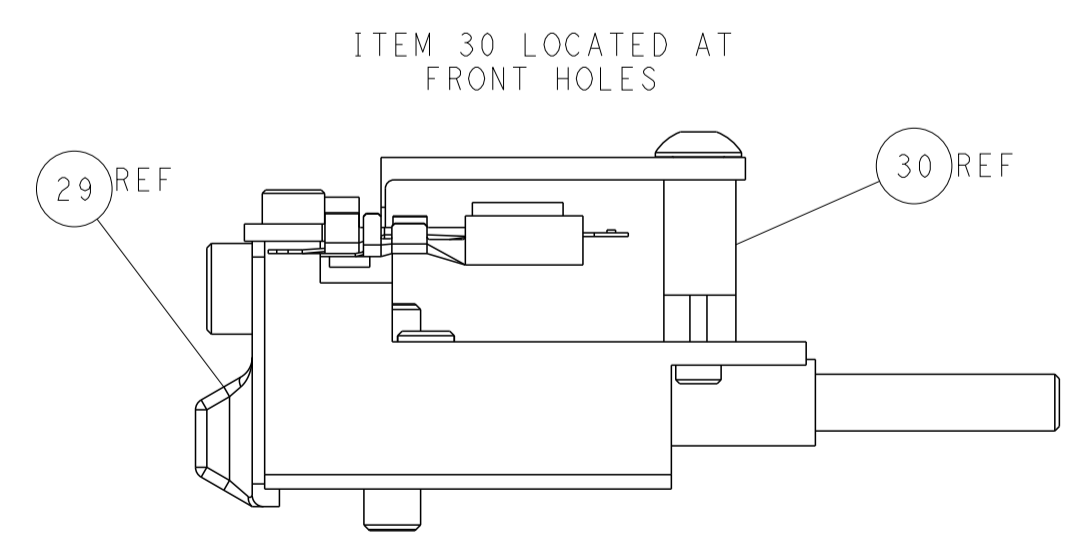
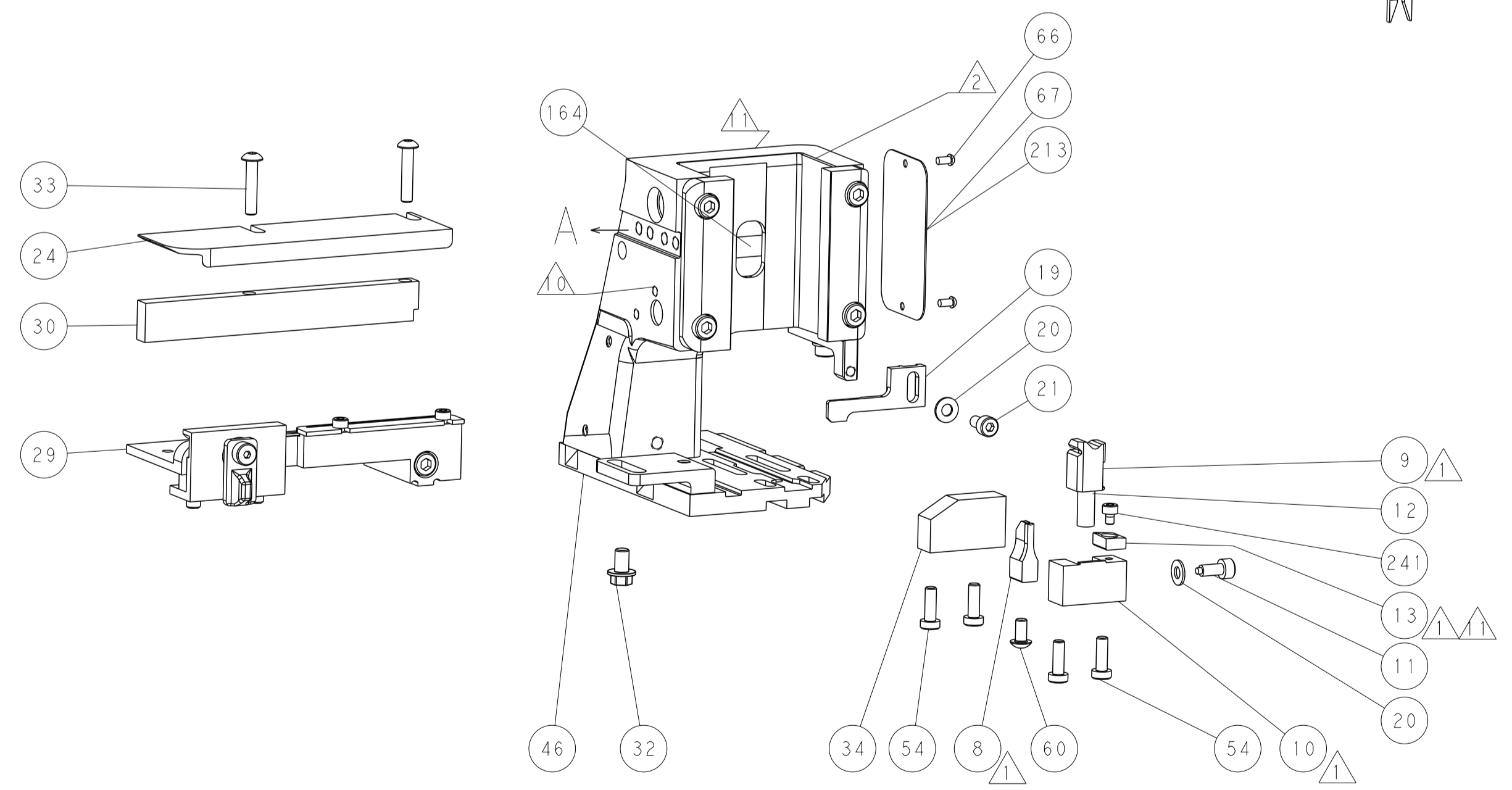
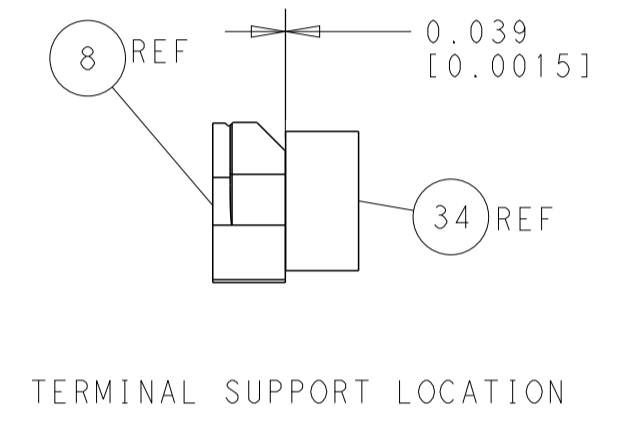
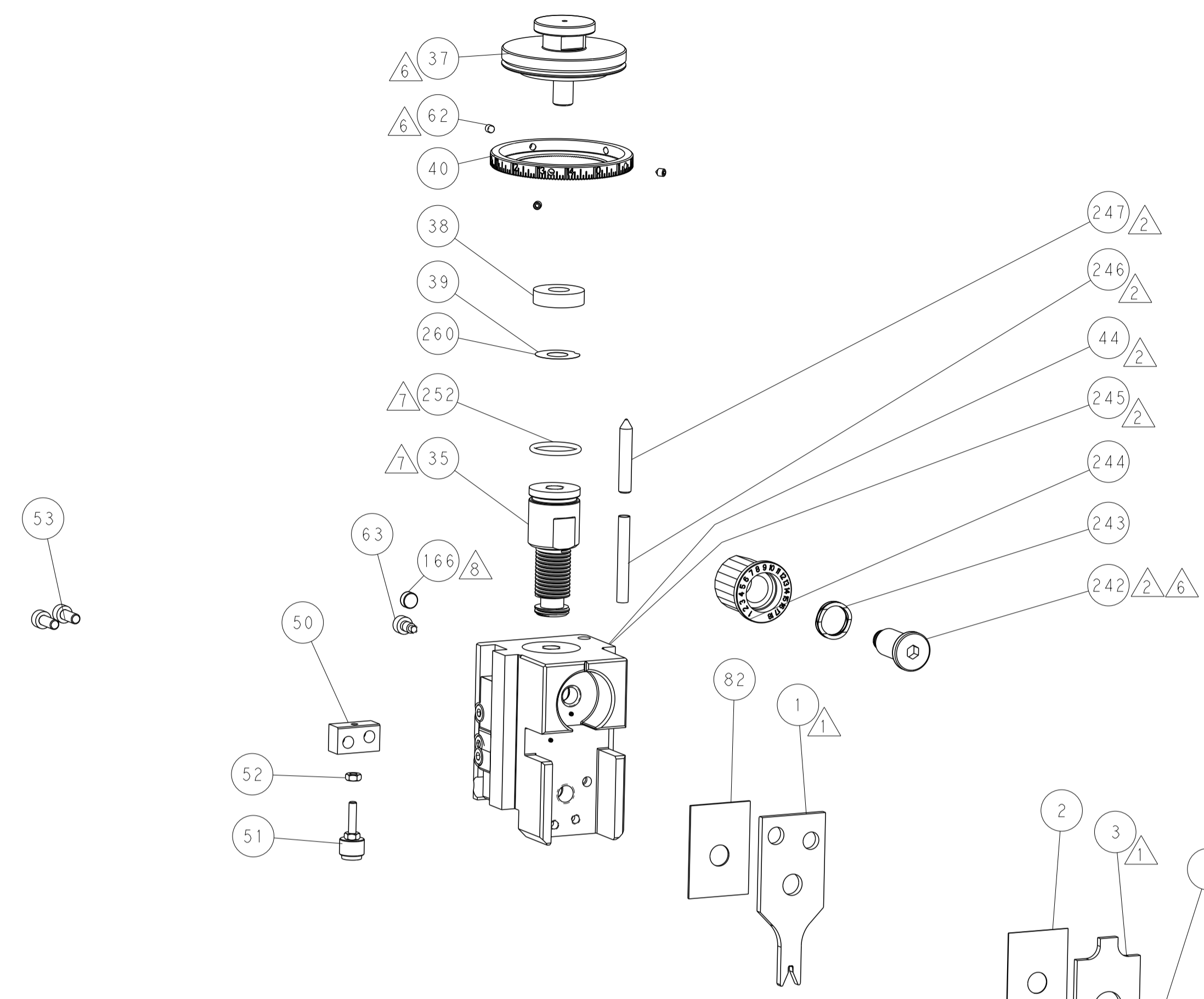
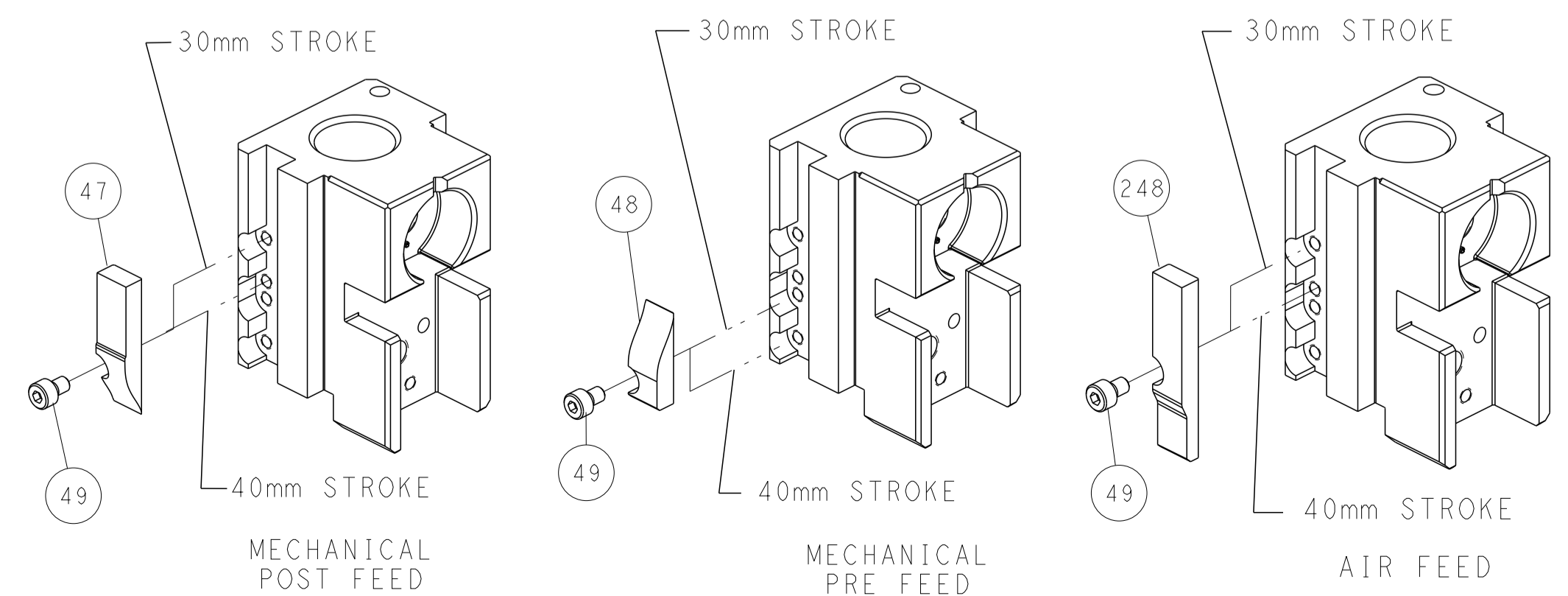
PNEUMATIC



SERVO LATCH PLATE



CAM POSITIONS



FEED TRACK POSITION
GUIDE BY INSULATION BARREL

ATLANTIC VERSION
 Shown on sheets 1 of 4 & 2 of 4
 (Pacific version shown on sheets 3 of 4 & 4 of 4)

DIMENSIONS:		TOLERANCES UNLESS OTHERWISE SPECIFIED:		DWN	12MAR2014	TE Connectivity Harrisburg, PA 17105-3608
mm	0 PLC ±0.5 1 PLC ±0.13 3 PLC ±0.013 4 PLC ±0.001	ANGLES	FINISH	CHK	12MAR2014	
MATERIAL		WEIGHT		APVD	12MAR2014	NAME
						Ocean Side Feed Applicator
						SIZE
						CAGE CODE
						DRAWING NO
						RESTRICTED TO
						A1 00779 ©=2266607
						Customer Accessible Production Drawing
						SCALE 1:2 SHEET 2 OF 4 REV A

THIS DRAWING IS UNPUBLISHED. RELEASED FOR PUBLICATION 20
COPYRIGHT 20 BY TYCO ELECTRONICS CORPORATION. ALL RIGHTS RESERVED.

APPLICATOR STYLE CONVERSION CHART

PACIFIC VERSION TERMINATOR INTERFACE ADAPTER	PART NUMBER	REVISION	DESCRIPTION	FEED TYPE	CONVERT TO							
					CONVERT TO	PART NUMBERS REQUIRED						
	2-2266607-1	A	FINE CRIMP HEIGHT ADJUST	MECHANICAL	PNEUMATIC FEED	2119950-1	1338685-1	5-18022-5	2119641-2	2119799-1	2063440-1	
	2-2266607-2	A	FINE CRIMP HEIGHT ADJUST	PNEUMATIC	SERVO LATCH PLATE	2119951-1	-	8-2266607-5	1901094-3	-	2168400-6 (QUANTITY 2)	
					SMART APPLICATOR	2161326-1	-	8-2266607-4	-	-		
					MECHANICAL FEED	2119949-1	1338685-1	5-18022-5	2119653-2	-	-	
	2-2266607-5	A	FINE CRIMP HEIGHT ADJUST	SERVO LATCH PLATE ⁴	SERVO LATCH PLATE	2119951-1	-	8-2266607-5	1901094-3	-	2168400-6 (QUANTITY 2)	
					SMART APPLICATOR	2161326-1	-	8-2266607-4	-	-		
	2-2266607-7	A	FINE CRIMP HEIGHT ADJUST	NONE	MECHANICAL FEED	2119949-1	1338685-1	5-18022-5	2119653-2	-	-	
					PNEUMATIC FEED	2119950-1	1338685-1	5-18022-5	2119641-2	2119799-1	2063440-1	
	7-2266607-7	A	CRIMP TOOLING KIT	-	-	-	-	-	-	-	-	-

APPLICATOR DATA

CRIMP	SIZE	TYPE
WIRE	1.85 mm [.073]	F
INSUL	2.54 mm [1.00]	F

APPLICATOR INSTRUCTIONS 408-10389

TERMINAL DATA: DELPHI TERMINAL DELPHI CRIMP SPECIFICATION

TERMINAL NAME: CTS 2.8MM ASSEMBLY

WIRE STRIP LENGTH 3.62-4.38 mm [1.43-1.72 IN]	INSULATION DIAMETER RANGE Ø1.40-2.10 mm [0.055-.083 IN]
--	--

TERMINAL APPLICATION SPECIFICATION 15457850 Rev 01

TERMINALS APPLIED

TE TERMINAL	DELPHI TERMINAL	TE TERMINAL	DELPHI TERMINAL
2113630-1	15457848		

WIRE SIZE CRIMP HEIGHT mm [INCH] CRIMP HEIGHT REFERENCE SETTING

1.00mm ²	1.40 +/- 0.05 [0.055 +/- .002]	7.4
0.75mm ²	1.35 +/- 0.05 [0.053 +/- .002]	7.9
0.50mm ²	1.25 +/- 0.05 [0.049 +/- .002]	8.9



- RECOMMENDED SPARE PARTS
- GREASE BEARING SURFACES LIGHTLY
- LUBRICATE DAILY PER THE APPLICATOR INSTRUCTION SHEET SUPPLIED WITH THE APPLICATOR.
- APPLICATOR SPECIFIC DATA TO BE ENTERED INTO BLANK MEMORY CHIP AT ASSEMBLY. SEE BELOW FOR PART NUMBER:
MECHANICAL FEED WITH "SMART APPLICATOR" CONVERSION: 8-2266607-4
PNEUMATIC FEED WITH "SMART APPLICATOR" CONVERSION: 8-2266607-4
SERVO FEED WITH "FINE CRIMP HEIGHT ADJUST": 8-2266607-5
- ADJUSTMENT OF THE STRIPPER MAY BE REQUIRED WHEN MOVING THE APPLICATOR BETWEEN BENCH AND LEADMAKER APPLICATIONS.
- APPLY PART NUMBER 1-23419-5 LOCTITE TO THREADS OF ITEM 62.
APPLY PART NUMBER 2-23419-6 LOCTITE TO THREADS OF ITEM 242.
- GREASE THREADS, GROOVE AND O-RING ON ITEMS 139 & 152.
- MAGNET MUST BE ORIENTED CORRECTLY IN ORDER TO PROPERLY ACTUATE THE COUNTER.
- CRIMP HEIGHT REFERENCE SETTING WAS THE SETTING USED WHEN THE APPLICATOR WAS QUALIFIED AT THE FACTORY. ADJUSTMENT MAY BE NECESSARY WHEN RUNNING APPLICATOR IN THE FIELD.
- SPARE FEED CAM STORAGE LOCATION REFER TO INSTRUCTION SHEET FOR ADDITIONAL INFORMATION.
- TO CONVERT THE APPLICATOR TO A NON-CARRIER CUTTING STYLE, REMOVE ITEM 13 AND ATTACH TO THE LOCATION ON BACK SIDE OF THE HOUSING. REFER TO INSTRUCTION SHEET FOR ADDITIONAL INFORMATION.

*WARNING
ON INSTALLATION, SET WIRE DISC, ITEM 40 TO LARGEST WIRE SIZE SETTING. USE OF SETTINGS BELOW MINIMUM REQUIRED CRIMP HEIGHT SETTING WILL CAUSE DAMAGE TO CRIMP TOOLING.

PACIFIC VERSION
Shown on sheets 3 of 4 & 4 of 4
(Atlantic version shown on sheets 1 of 4 & 2 of 4)

SET UP GAUGE 2119599-1
LOC A DIST 66

REVISIONS

REV	DATE	DESCRIPTION	BY	APPV
-	-	SEE SHEET 1	-	-

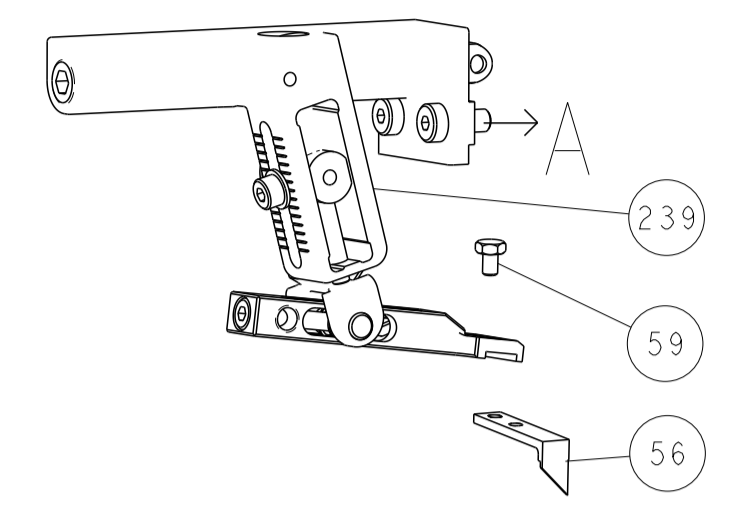
-	1	1	1	1	2119782-1	FINE ADJUST HEAD ASM, PACIFIC STYLE	251
-	-	-	1	-	2119640-1	PUSH ROD, AIR FEED	250
-	-	-	1	-	2079988-1	BUSHING, LCH5-12, MISUMI	249
-	1	1	1	1	1-22279-3	SPRING, COMPRESSION	246
-	1	1	1	1	2119082-4	CAM, SNAIL, INSULATION ADJUSTMENT	244
-	1	1	1	1	2079764-1	WASHER, WAVE SPRING, CREST-TO-CREST	243
-	1	1	1	1	2119083-1	RETAINER, INSULATION DIAL	242
-	1	1	1	1	7-18023-7	SCR, SKT HD CAP M3 X 4.0	241
-	-	2	-	-	2168400-6	SHCS, LOW HEAD, RoHS, M5 X 16	240
-	-	-	-	1	2119580-1	MECHANICAL FEED ASSEMBLY	239
-	-	-	1	-	2063440-1	AIR FEED MODULE	238
-	-	1	-	-	2119740-2	TAG, IDENTIFICATION	213
-	-	1	-	-	1901094-3	SPACER, FEEDER	198
-	-	-	2	-	21045-3	RING, RETAIN, EXTERN, 3/16 CRESCENT	172
-	1	1	1	1	994969-1	MAGNET, RARE EARTH HIGH ENERGY	166
-	REF	REF	REF	REF	994970-2	COUNTER, MAGNETIC	164
-	-	-	1	-	240638-1	SPRING, FEED FINGER	163
-	1	1	1	1	8-21084-1	O-RING, .801 ID, .070 DIA. MAT.	152
-	-	-	1	-	2119641-2	FEED CAM, AIR FEED	151
-	1	1	1	1	2119798-2	DETENT PIN	145
-	1	1	1	1	2079383-8	SCR, BHSC, RoHS (M4 X 16)	144
-	4	4	4	4	2168400-5	SHCS, LOW HEAD, RoHS, M4 X 20	143
-	-	-	-	1	2119653-2	FEED CAM, POST FEED	142
-	1	1	1	1	1-2119656-0	APPLICATOR BASIC ASSEMBLY, SF	141
-	1	1	1	1	2119650-1	RAM, ASIAN STYLE, SIDE FEED	140
-	1	1	1	1	2119092-2	BOLT, ADJUSTMENT	139
-	-	-	1	-	3-23627-7	PIN, RETAIN, GRVD, 3/16 X .854	137
-	-	-	1	-	2119799-1	HOLDER, FEED FINGER, AF	136
-	-	REF	-	-	SEE NOTE 4	MEMORY CHIP, PROGRAMMED	135
-	-	1	-	-	1633743-1	SERVO FEED LATCH ASM	133
-	-	REF	-	-	2119944-1	FEED FINGER ASSEMBLY, SF	117
-	1	1	1	1	455888-7	SPACER, CRIMPER	82
-	1	1	1	1	2119956-1	DOCUMENTATION PACKAGE	71
-	1	-	1	1	2119740-1	TAG, IDENTIFICATION	67
-	2	2	2	2	2168078-1	SCREW, DRIVE, RH, RoHS, 2 x .188	66
-	1	1	1	1	2119793-1	LIMITER, ADJUSTMENT BOLT	63
-	3	3	3	3	992763-5	SCR, SET, SOC, CONE POINT, M3 X 4.0	62
-	-	-	1	1	5-18022-5	SCR, HEX HD CAP, M4 X 6.0	59
-	-	-	1	1	1338685-1	PAWL, FEED	56
-	2	2	2	2	1-2168083-0	SCR, SKT HD CAP, RoHS, M4 X 10	53
-	1	1	1	1	5018030-1	NUT, HEX, REG, RoHS, M3	52
-	1	1	1	1	811242-5	BUMPER, HOLD DOWN	51
-	1	1	1	1	690753-2	SPACER, TONKER	50
-	-	-	1	2	18023-9	SCR, SKT HD CAP M4 X 6.0	49
-	-	-	-	1	2119652-1	FEED CAM, PRE FEED	48
-	1	1	1	1	2079383-7	SCR, BHSC, RoHS (M8 X 25)	41
-	1	1	1	1	2119645-1	DISC, NUMBERED FA WIRE ADJUSTMENT	40
-	1	1	1	1	2119957-1	APPLICATOR SHIM PACK	39
-	1	1	1	1	1-2119644-2	RAM WASHER, PRECISION	38
-	1	1	1	1	1-1752356-7	SUPPORT, TERMINAL	34
-	2	2	2	2	2079383-5	SCR, BHSC, RoHS (M4 X 20)	33
-	1	1	1	1	2161328-1	HEX HEAD, FLANGED, M5 X 8mm LONG	32
-	1	1	1	1	1320908-3	SPACER, STRIP GUIDE	30
-	1	1	1	1	2119959-1	ASSEMBLY, STRIP GUIDE	29
-	1	1	1	1	455888-3	SPACER, CRIMPER	28
-	1	1	1	1	1320928-2	STRIP GUIDE	24
-	1	1	1	1	2168083-2	SCR, SKT HD CAP, RoHS, M4 X 8.0	21
-	2	2	2	2	1-18028-2	WASHER, FLAT, REG M4	20
-	1	1	1	1	2119533-1	STRIPPER, SIDE FEED	19
-	1	1	1	1	2119806-1	INSERT, SHEAR	13
-	1	1	1	1	3-22280-3	SPRING, COMPRESSION	12
-	1	1	1	1	1-356885-4	STOP, SHEAR	11
-	1	1	1	1	2119805-1	SHEAR HOLDER, FRONT	10
-	1	1	1	1	1803095-1	FLOATING SHEAR, FRONT	9
1	1	1	1	1	7-1803054-4	ANVIL, COMBINATION	8
-	-	-	-	-	-	-	7
-	-	-	-	-	-	-	6
-	1	1	1	1	2119757-8	DEPRESSOR, SHEAR	5
-	1	1	1	1	238011-4	BLOCK, CRIMPER SPACER	4
1	1	1	1	1	7-1633962-9	CRIMPER, INSULATION F PREMIUM	3
-	1	1	1	1	455888-3	SPACER, CRIMPER	2
1	1	1	1	1	4-1633860-4	CRIMPER, WIRE	1

THIS DRAWING IS UNPUBLISHED. RELEASED FOR PUBLICATION 20

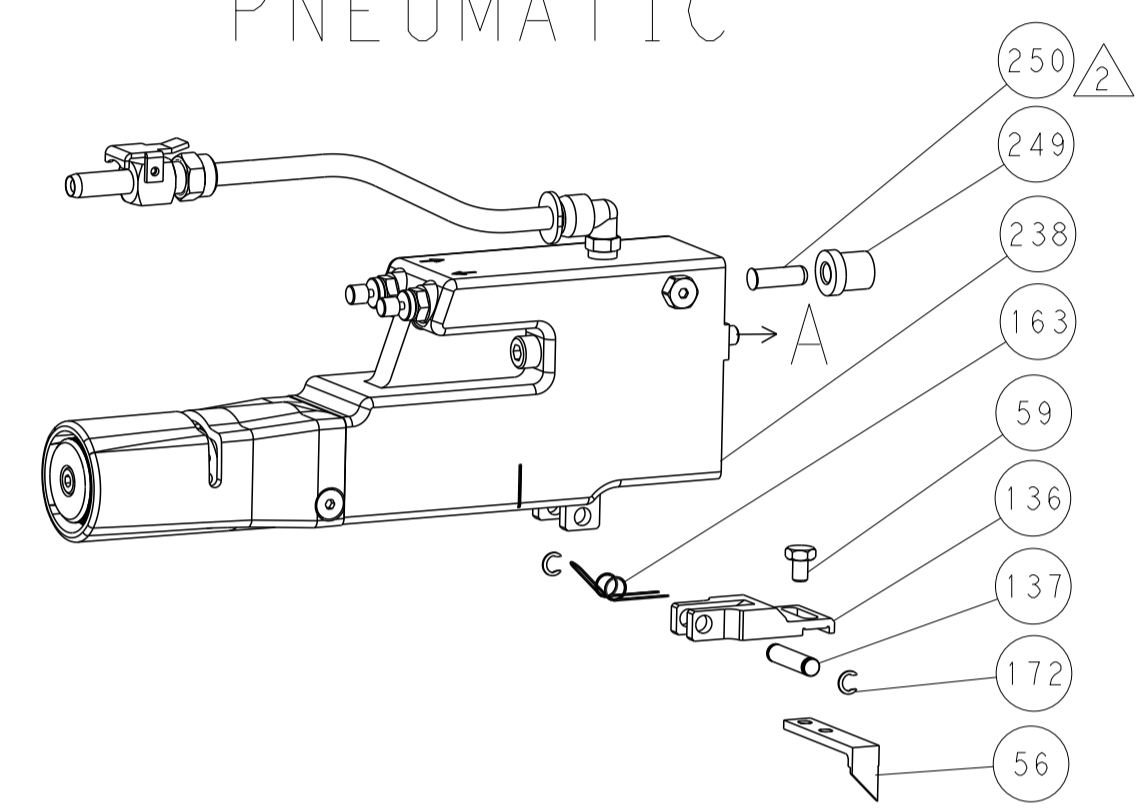
DIMENSIONS:	TOLERANCES UNLESS OTHERWISE SPECIFIED:	OWN 12MAR2014	STE TE Connectivity	
mm	0 PLC ±.5 1 PLC ±0.5 2 PLC ±0.13 5 PLC ±0.013 4 PLC ±0.001 ANGLES ±.1	CHK 12MAR2014	Harrisburg, PA 17105-3608	
		APVD 12MAR2014	NAME Ocean Side Feed Applicator	
MATERIAL	FINISH	PRODUCT SPEC	SIZE CAGE CODE DRAWING NO	
		APPLICATION SPEC	A1 00779 C=2266607	
		WEIGHT	RESTRICTED TO	
			Customer Accessible Production Drawing	
		SCALE 1:2	SHEET 3 of 4 REV A	

LOC		DIST		REVISIONS			
A	66	P	LTM	DESCRIPTION	DATE	DWN	APVD
		-	-	SEE SHEET 1	-	-	-

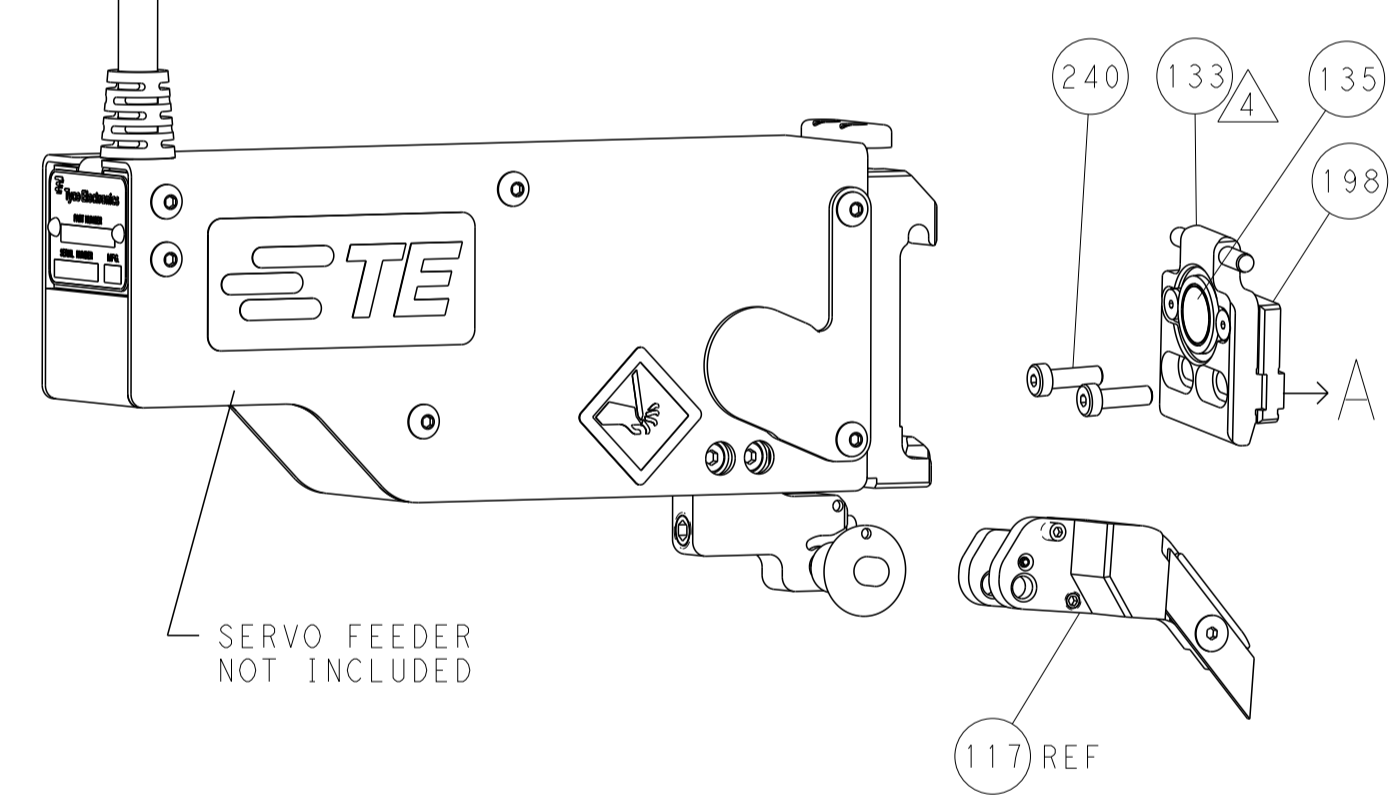
FEED TYPE MECHANICAL



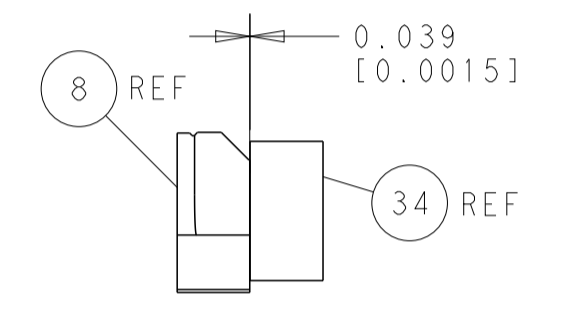
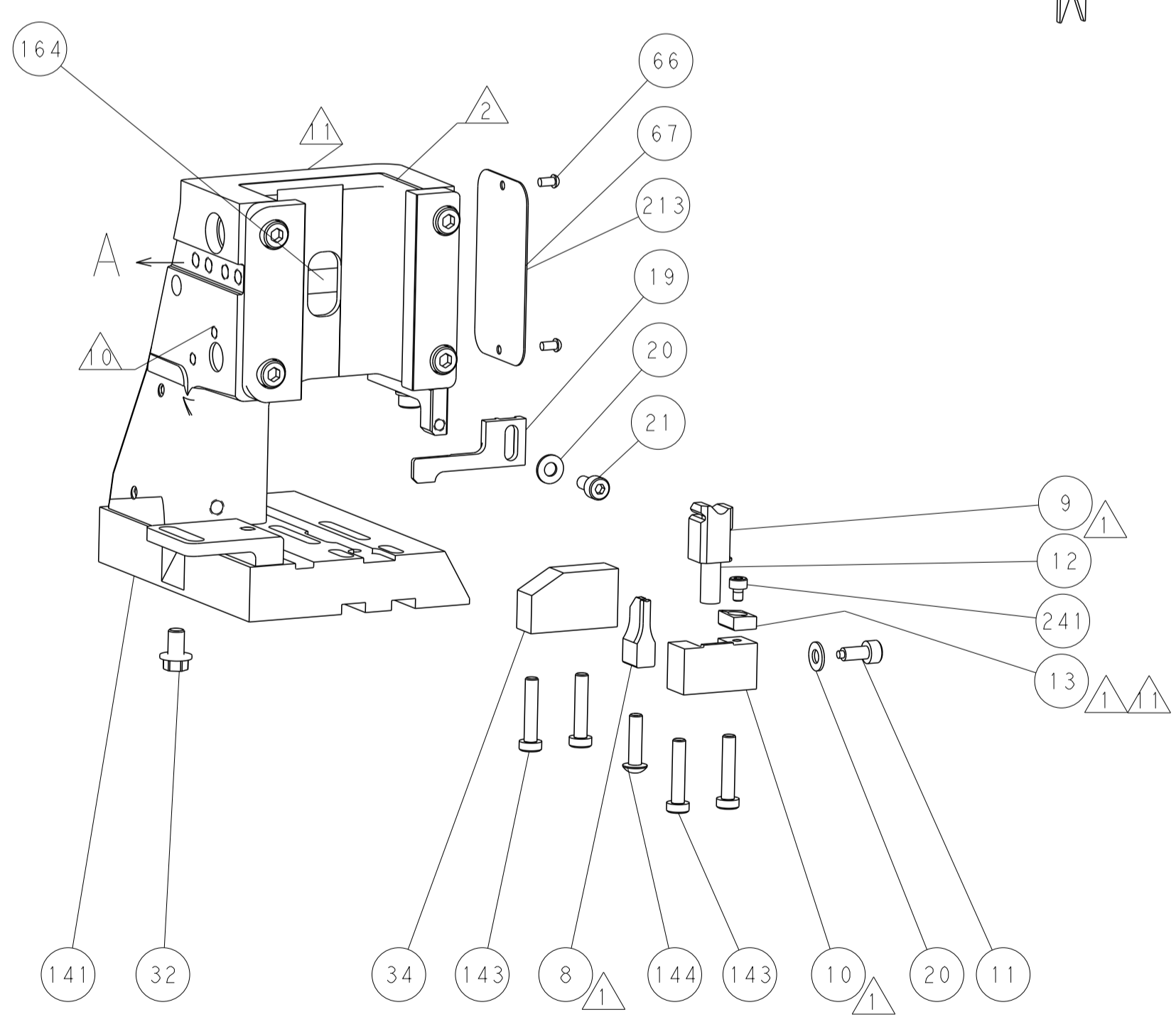
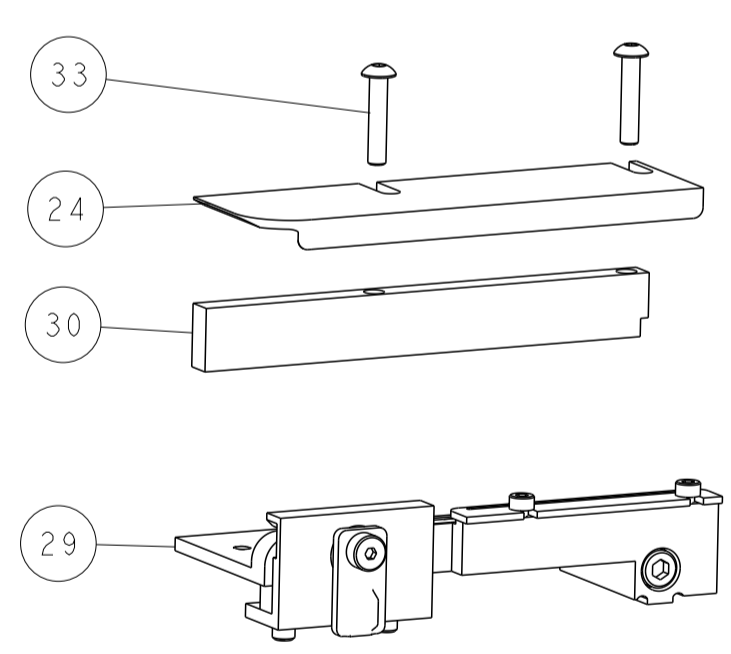
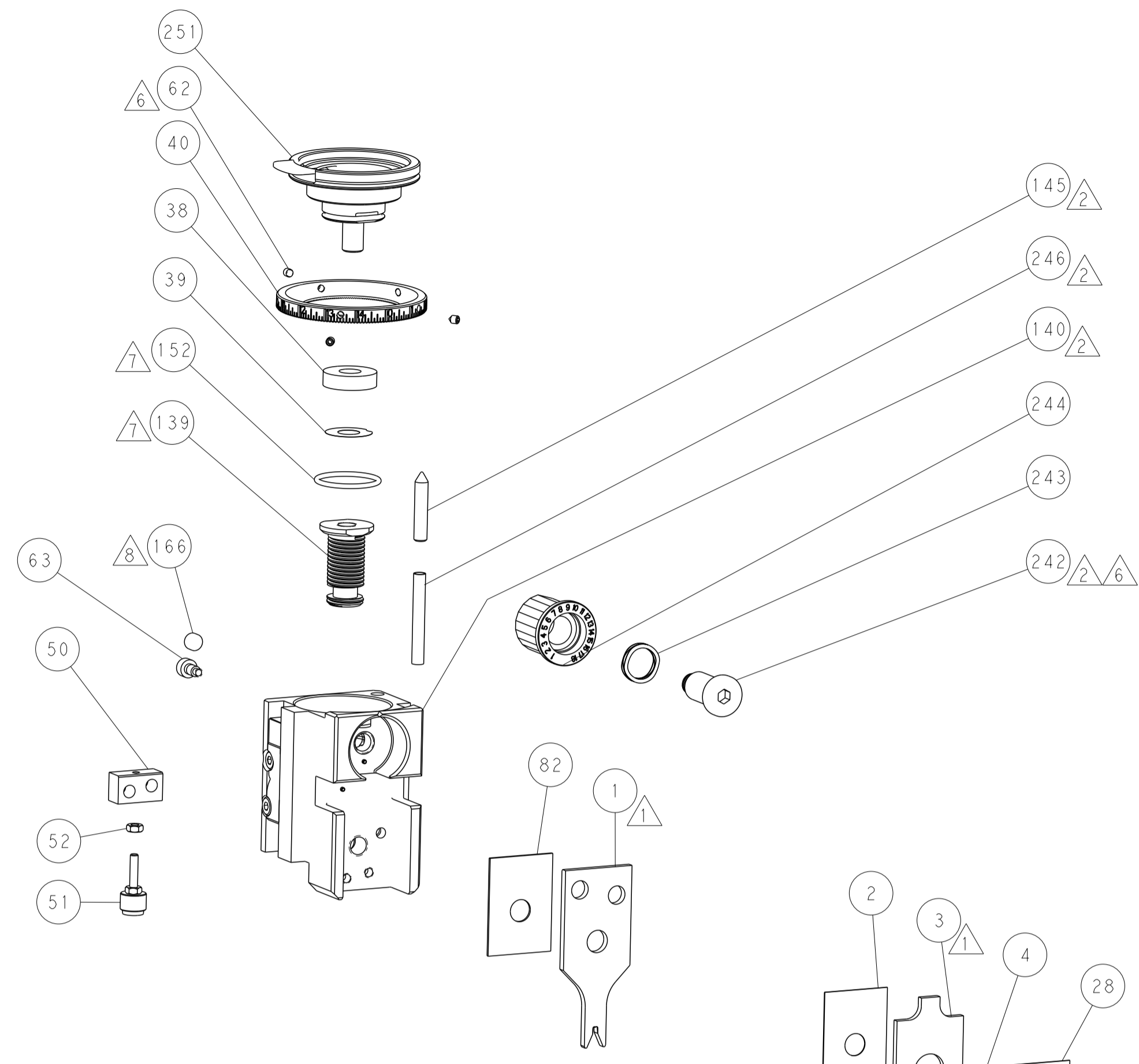
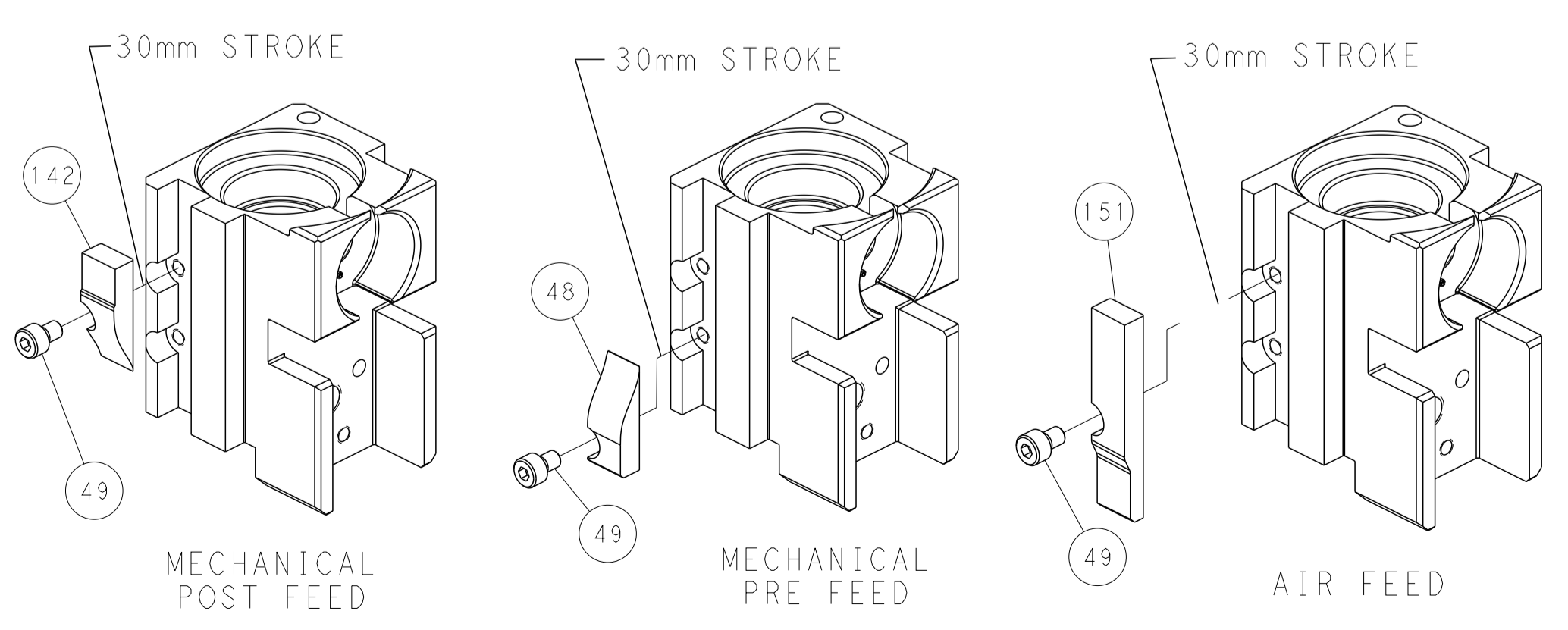
PNEUMATIC



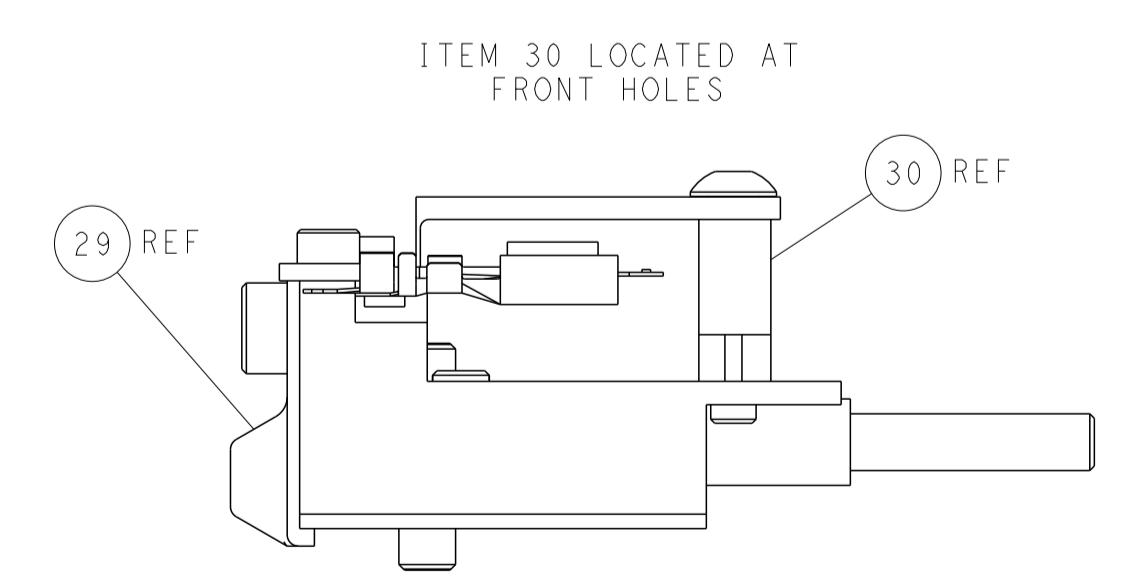
SERVO LATCH PLATE



CAM POSITIONS



TERMINAL SUPPORT LOCATION



FEED TRACK POSITION
GUIDE BY INSULATION BARREL

PACIFIC VERSION
 Shown on sheets 3 of 4 & 4 of 4
 (Atlantic version shown on sheets 1 of 4 & 2 of 4)

DIMENSIONS:		TOLERANCES UNLESS OTHERWISE SPECIFIED:		DWN	12MAR2014	TE Connectivity Harrisburg, PA 17105-3608
mm	0 PLC ±0.5	1 PLC ±0.5	2 PLC ±0.13	CHK	12MAR2014	
MATERIAL:		FINISH:		APVD	12MAR2014	NAME
						Ocean Side Feed Applicator
				WEIGHT		SIZE
						CAGE CODE
						DRAWING NO
						RESTRICTED TO
						A 00779 C=2266607
						Customer Accessible Production Drawing
						SCALE 1:2 SHEET 4 OF 4 REV A