

6

5

4

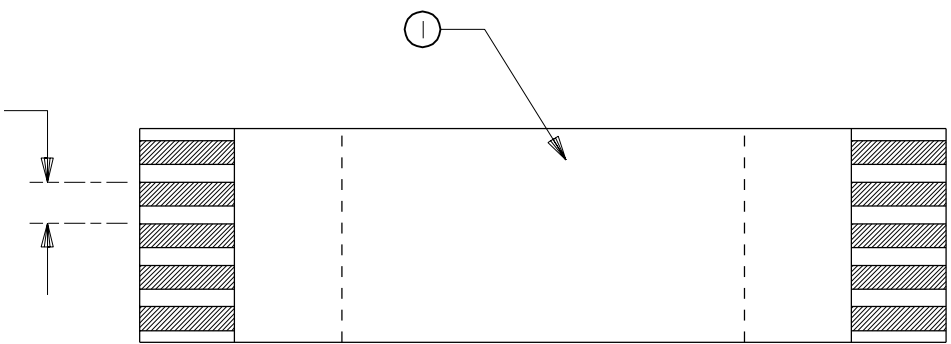
3

2

21020

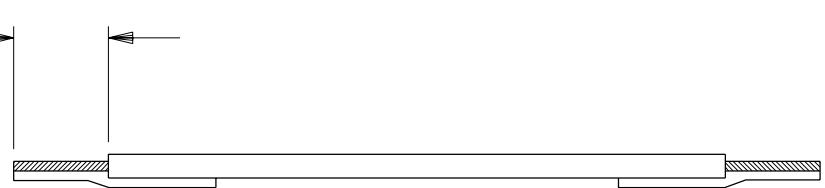
ITEM	DESCRIPTION	P/N	QTY	CKT. SIZE	TEMP. RATING
①	CABLE	21020-0543	2.008"	50	L

$.020 \pm .002$
(0.50 ± 0.05)



$2.008 \pm .118$
(51.00 ± 3.00)

$.157 \pm .039$
(4.00 ± 1.00) TYP



$.236$
(6.00) REF TYP

NOTE:

NO PRINTING TO BE ALLOWED ON CABLE

REF. PRODUCT SPEC. NO. SMPS-21020

DIMENSIONS SHOWN (METRIC) INCH

UNLESS OTHERWISE SPECIFIED
TOLERANCES: ANGULAR $\pm 1/2^\circ$

	INCH	METRIC
3 PLACE	$\pm .005$	---
2 PLACE	$\pm .01$	± 0.13
1 PLACE	---	± 0.25

DRAFT WHERE APPLICABLE MUST REMAIN WITHIN DIMENSIONS

$\nabla C = 0$ $\blacktriangledown = 0$

REVISE ONLY ON CAD SYSTEM

TITLE
0.5 mm \odot FFC JUMPER
STYLE TYPE "A"
PDR UAU-000944-00-00

MOLEX INCORPORATED
LISLE, ILL. 60532 U.S.A.
SHEET NO. 1 OF 1 DATE 02/06/19

PART NO. 21020-0543 DRWG. NO. 21020-0543

A
FINAL RELEASE
ECN UAU2002-0223
DEMO 02/06/19

DRWG. BY DRD CHK'D. BY TGP
APP'D. BY RLM SCALE -- : --

FILE NAME 21020-0543 SO1
THIS DRAWING CONTAINS INFORMATION THAT IS PROPRIETARY TO MOLEX INC. AND SHOULD NOT BE USED WITHOUT WRITTEN PERMISSION.
DIV. AU SIZE A

LTR. REVISIONS

LTR. REVISIONS

6

5

4

3

2

1