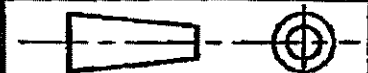


1 OBSOLETE PARTS: OBSOLETE CIS STREAMLINING PER D.RENAUD/D.SINISI
 2 OBSOLETE

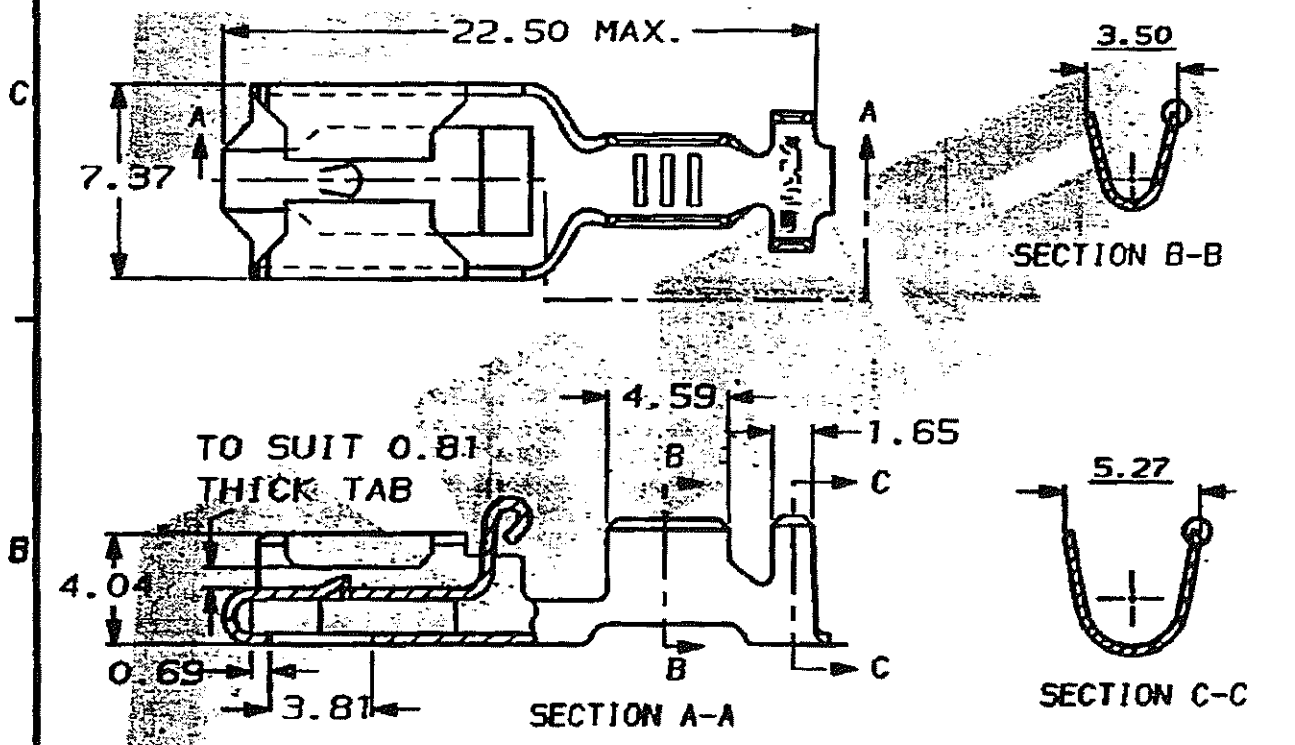
DO NOT SCALE

DIMENSIONS IN MM.



C.A.D. FILE CODE
S. C154718.AD

| PART NUMBER | MATERIAL | FINISH | REELING | LOOSE PIECE (REF. ONLY) |
|-----------------------|--------------|---------|---------------------|-------------------------|
| 154718-1 | BRASS | NONE | STANDARD | 341002-1 |
| 154718-2 | PHOS. BRONZE | NONE | STANDARD | 341002-2 |
| 154718-3 | BRASS | TIN | STANDARD | 341002-3 |
| 154718-4 | PHOS. BRONZE | TIN | STANDARD | 341002-4 2 |
| 1 154718-5 | PHOS. BRONZE | NONE | STANDARD | 341002-5 |
| 154718-6 | BRASS | PRE-TIN | STANDARD | 341002-6 |
| 154718-7 | PHOS. BRONZE | PRE-TIN | STANDARD | 341002-7 |
| 154718-8 | BRASS | SILVER | STANDARD | 341002-8 |
| 154718-9 | BRASS | SILVER | STANDARD | 341002-9 |
| 1-154718-0 | BRASS | PRE-TIN | STANDARD | --- |
| 1-154718-1 | BRASS | NONE | REV. REEL VERSION-1 | --- |
| 1-154718-2 | PHOS. BRONZE | NONE | REV. REEL VERSION-2 | --- |
| 1-154718-3 | PHOS. BRONZE | PRE-TIN | STANDARD | --- |
| 2 1-154718-4 | BRASS | TIN | REV. REEL VERSION-3 | --- |
| 1-154718-5 | PHOS. BRONZE | TIN | REV. REEL VERSION-4 | --- |



WIRE RANGE 0.7 TO 2.0mm²

INSULATION RANGE 2.4 TO 3.2mm DIA.

CUSTOMER DWG
FOR REFERENCE ONLY

RELEASED FOR PUBLICATION
ORIGINAL 1974

TOLERANCES
UNLESS OTHERWISE
STATED
DEC ± 0.5
ANGLES ± 1°

DR. D.A. BARRATT

27.11.91

CH. D. TERRY

APP. D.A. BARRATT



TE Connectivity

NAME POSITIVE LOCK RECEPTACLE

| | | | | | | | | | |
|-----|---------------------------|----------|---------|-------|-----|------|----------|-----|-------|
| AD2 | REVISED PER ECO-11.005150 | RK/HMR | 28MAR11 | SCALE | LOC | SIZE | DWG. No. | REV | SHEET |
| REV | ECN | APPROVED | DATE | 4/1 | E | A4 | C154718 | AD2 | 1/1 |