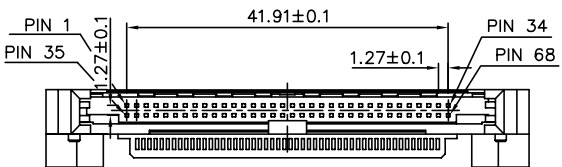
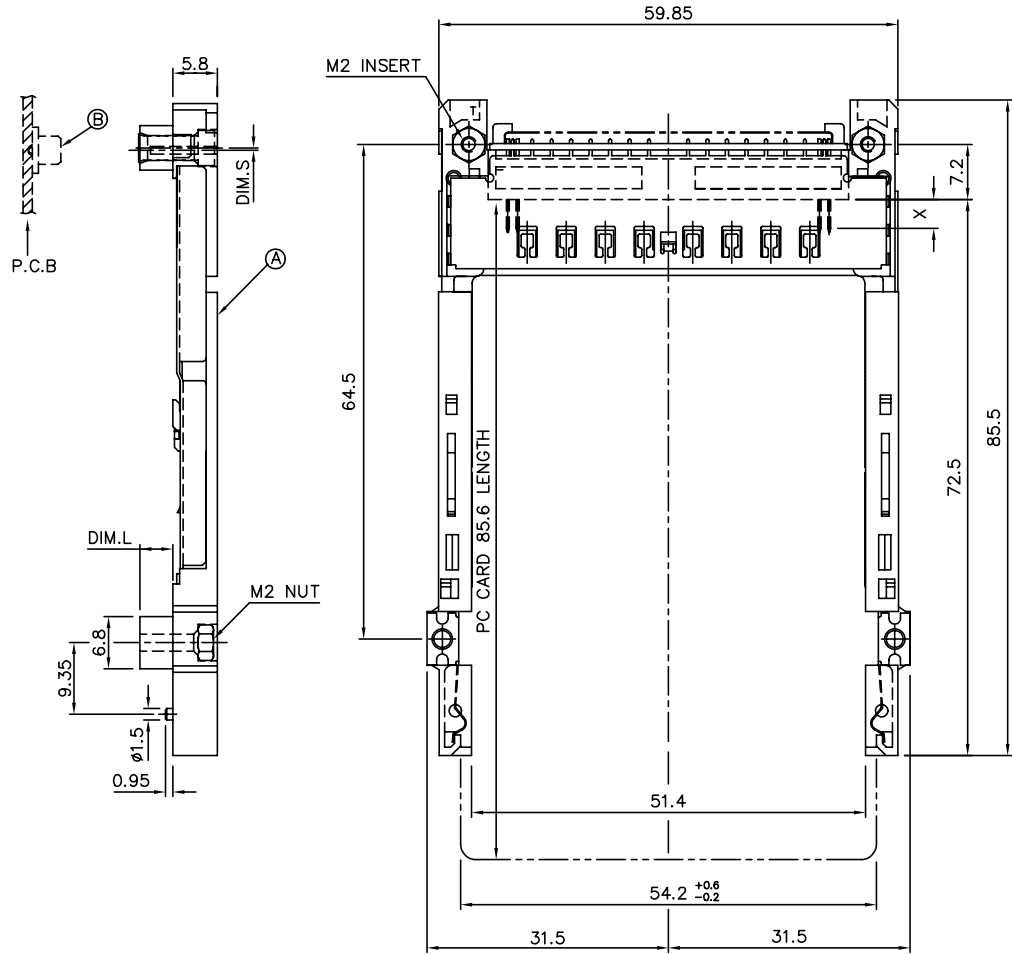


FCI CONFIDENTIAL

FCI CONFIDENTIAL

PRODUCT NO.	DIM.L	DIM.S
52599-022/022LF	2.2	1.0
52599-043/043LF	4.3	-0.3
52599-050/050LF	5.0	-0.3



P/N: 52599-***/***/LF
ABOVE P.C.B

NOTES:

- MATERIAL:
 - 1.1 EJECT HEADER ASS'Y
PLASTIC HOUSING: HIGH TEMPERATURE THERMOPLASTIC UL94V-0 BLACK
PIN: COPPER ALLOY
PCB: FR4
PLASTIC GUIDE: HIGH TEMPERATURE THERMOPLASTIC UL94V-0 BLACK
 - 1.2 RECEPTACLE
PLASTIC: HIGH TEMPERATURE THERMOPLASTIC UL94V-0 BLACK
PIN: BeCu
- FINISH
PIN :
UNDER PLATING: 1.27 um MIN. Ni
CONTACT AREA: 0.076 μm MIN. GOLD

SOLDER TAIL: 2.5 um MIN. Sn-Pb
: 2.5 um MIN. PURE Sn (FOR -***/LF)

GROUND SHIELD :
UNDER PLATING: 1.27 um MIN. Ni
CONTACT SURFACE: 0.2 um GOLD (ONE SIDE ONLY)
- P.C.B. ARE AS APPEARS INSTALLED
- DIM "X"

4.25±0.1	3.5±0.1	5.0±0.1
OTHERS	36,67	1,17,34,35,51,68
- DO NOT TOUCH AND KEEP CLEAN THE SURFACES OF PCB OF HEADER ASS'Y.
- IF LEAD FREE P/N. THE HOUSING WILL WITHSTAND EXPOSURE TO 260°C PEAK TEMPERATURE FOR 10 SECONDS IN A WAVE SOLDER APPLICATION WITH A 1.00MM MINIMUM THICK CIRCUIT BOARD.
- LEAD FREE PRODUCT MEETS EUROPEAN UNION DIRECTIVES AND OTHER COUNTRY REGULATIONS AS DESCRIBED IN GS-22-008
- IF LEAD FREE P/N. PACKAGING MEETS GS-14-920 SPECIFICATION
- PRODUCT SPEC:110-263

ORDERING INFORMATION

NAME	PART NO.	Q'TY
Ⓐ EJECT HEADER ASS'Y	52599-***/***/LF	1
Ⓑ MATING RECEPTACLE	73277-101000/101402LF	1

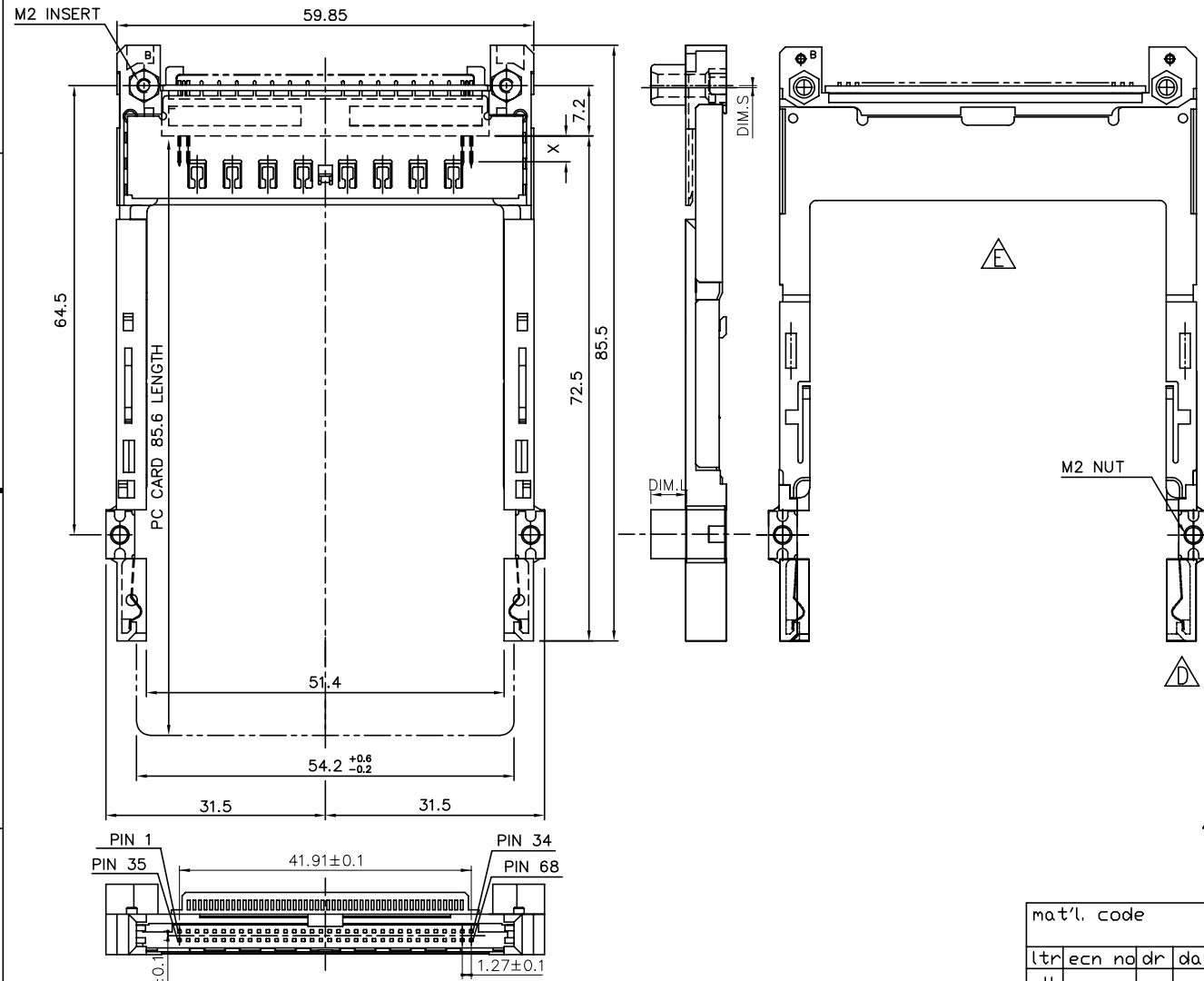
mat'l. code		surface ISO 1302		tolerance ISO 406 ISO 1101		projection 1:1		product family CARDBUS	
ltr ecn no dr		date		tolerances unless otherwise specified		title		CARDBUS NONE PUSH ROD, TYPE 1/2/3	
H	EX-N-011389	ZK	04/02/12	angles		linear		MM	
B	T00270	WL	08/04/00	± 0.30		scale 1:2:1		dwg no	
C	N05-0135	WB	05/27/05	± 2'		sheet 1 of 5		size	
D	N05-0316	MZ	11/18/05	chr	Mike Zhou	08/18/06	52599		A4
E	N06-0081	MZ	03/28/06	engr	Mike Zhou	08/18/06	type CUSTOMER		Drawing
F	N06-0220	MZ	08/18/06	chr	Mike Zhou	08/18/06			
G	N08-0028	MZ	11/21/06	appd	Qin David	08/18/06			
sheet index	revision	H	H	H	H	H			
	sheet	1	2	3	4	5			

FCI CONFIDENTIAL



This document is the property of and embodies CONFIDENTIAL PROPRIETARY information of FCI. No part of this information or this document may be used in any way or disclosed to others without the written consent of FCI.
Copyright FCI.

PRODUCT NO.	DIM.L	DIM.S
52599-550	5.0	-0.3
52599-550LF	5.0	-0.3
52599-550MLF	5.0	-0.3



- NOTES:
- MATERIAL:
 - 1.1 EJECT HEADER ASS'Y
PLASTIC HOUSING: HIGH TEMPERATURE THERMOPLASTIC UL94V-0 BLACK
PIN: COPPER ALLOY
PCB: FR4
PLASTIC GUIDE: HIGH TEMPERATURE THERMOPLASTIC UL94V-0 BLACK
 - 1.2 RECEPTACLE
PLASTIC: HIGH TEMPERATURE THERMOPLASTIC UL94V-0 BLACK
PIN: BeCu
 - FINISH
PIN :
UNDER PLATING: 1.27 um MIN. Ni
CONTACT AREA 1: 0.076 um MIN. GOLD

CONTACT AREA 2 : 0.076 um MIN. GOLD (FOR****-MLF)
SOLDER TAIL:1) 2.5 um MIN. Sn-Pb
:2) 2.5 um MIN. PURE Sn (FOR -***LF&-***MLF)
 - GROUND SHIELD :
UNDER PLATING: 1.27 um MIN. Ni
CONTACT SURFACE: 0.2 um GOLD (ONE SIDE ONLY)
 - P.C.B. ARE AS APPEARS INSTALLED
 - DIM "X"

4.25±0.1	3.5±0.1	5.0±0.1
OTHERS	36,67	1,17,34,35,51,68
 - DO NOT TOUCH AND KEEP CLEAN THE SURFACES OF PCB OF HEADER ASS'Y.
 - IF LEAD FREE P/N. THE HOUSING WILL WITHSTAND EXPOSURE TO 260°C PEAK TEMPERATURE FOR 10 SECONDS IN A WAVE SOLDER APPLICATION WITH A 1.00MM MINIMUM THICK CIRCUIT BOARD.
 - LEAD FREE PRODUCT MEETS EUROPEAN UNION DIRECTIVES AND OTHER COUNTRY REGULATIONS AS DESCRIBED IN GS-22-008
 - IF LEAD FREE P/N. PACKAGING MEETS GS-14-920 SPECIFICATION
 - PRODUCT SPEC:110-263

ORDERING INFORMATION

NAME	PART NO.	Q'TY
Ⓐ EJECT HEADER ASS'Y	52599-***/***/**LF	1
Ⓑ MATING RECEPTACLE	73277-101000/101402LF	1

P/N: 52599-550/550LF/550MLF
BELOW P.C.B

mat'l. code	surface ISO 1302	tolerance ISO 406 ISO 1101	projection 1:1	product family CARDBUS
ltr ecn no dr date	tolerances unless otherwise specified			title CARDBUS NONE PUSH ROD, TYPE 1/2/3
H	angles linear ± 0.30	scale 1:2:1	MM	dwg no 52599
dr	Mike Zhou 08/18/06	enrg	Mike Zhou 08/18/06	sheet 2 of 5 size A4
chr	Mike Zhou 08/18/06	appd	Qin David 08/18/06	type CUSTOMER Drawing

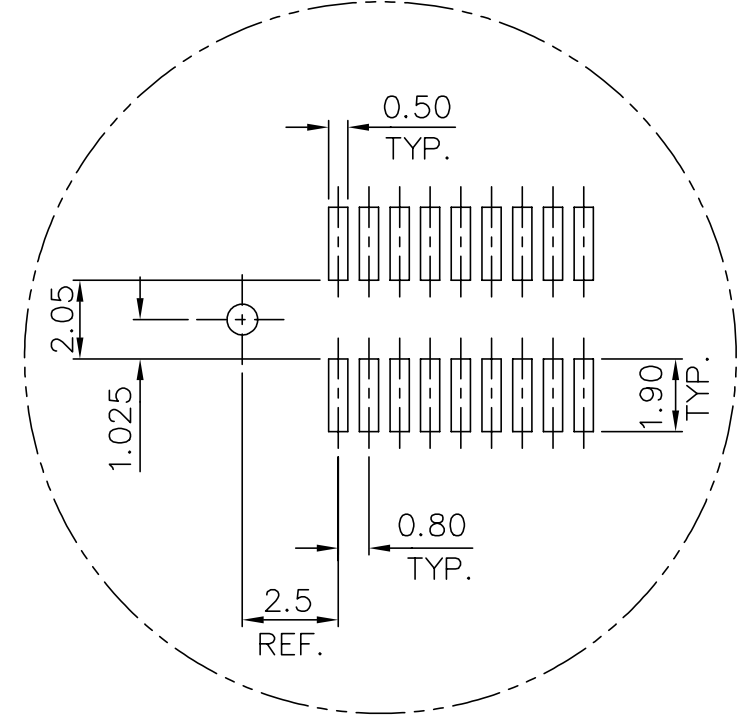
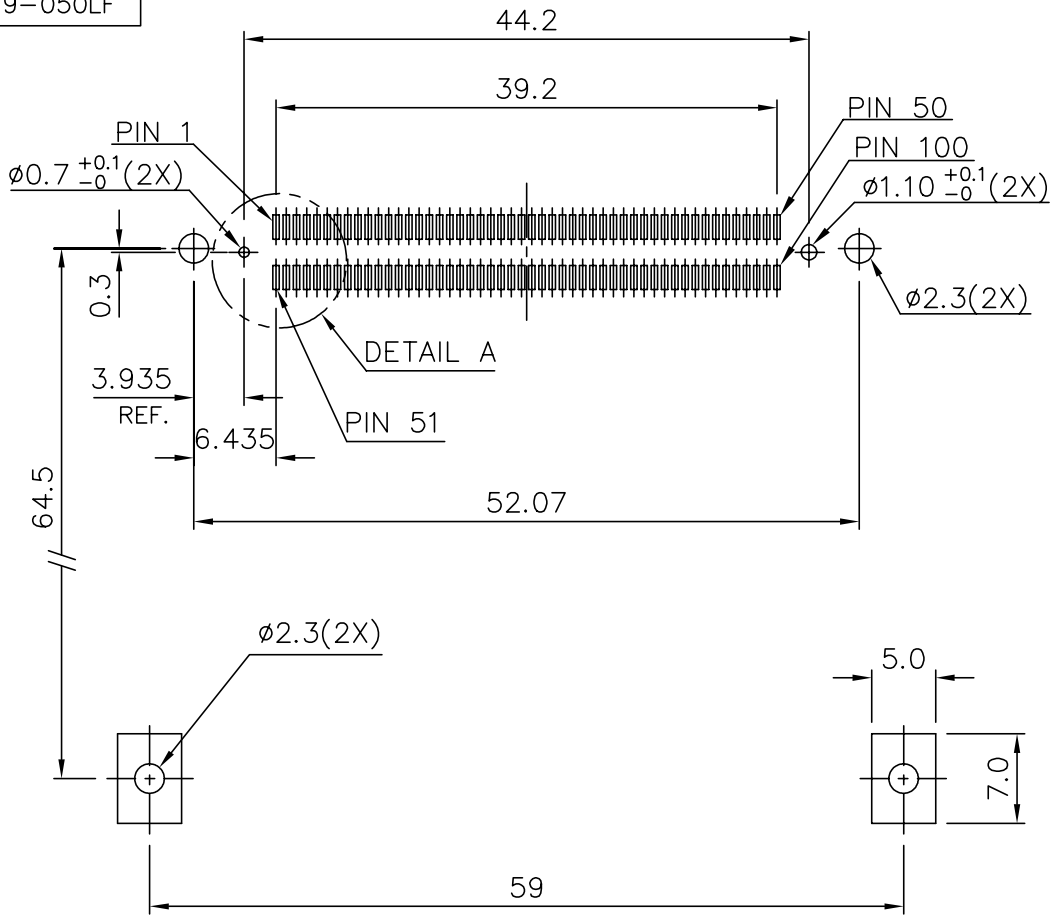
sheet index	revision sheet																		
-------------	----------------	--	--	--	--	--	--	--	--	--	--	--	--	--	--	--	--	--	--

FCI CONFIDENTIAL

FCI

This document is the property of and embodies CONFIDENTIAL PROPRIETARY information of FCI. No part of this information or this document may be used in any way or disclosed to others without the written consent of FCI. Copyright FCI.

PRODUCT NO.	
52599-043	
52599-050	
52599-043LF	
52599-050LF	



DETAIL A

4 CARD INSERTION DIRECTION

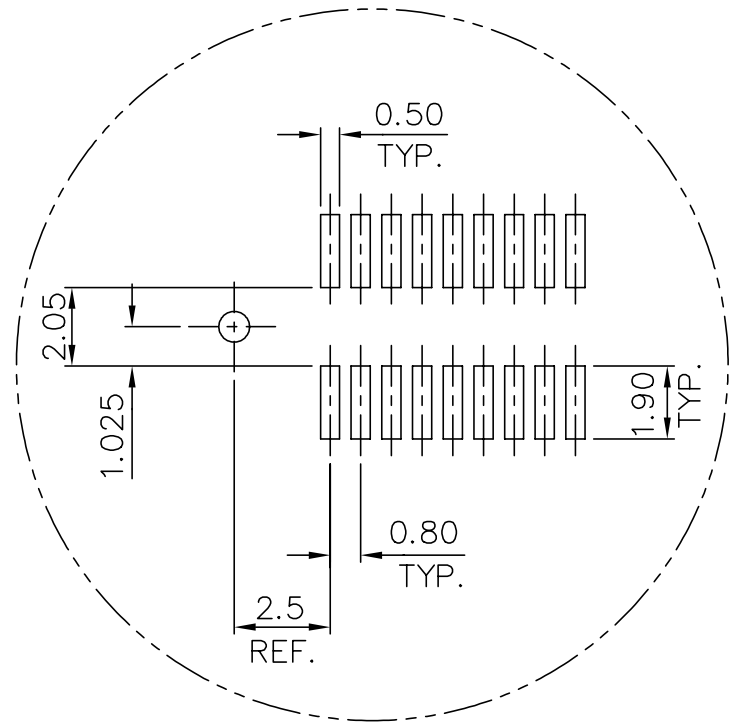
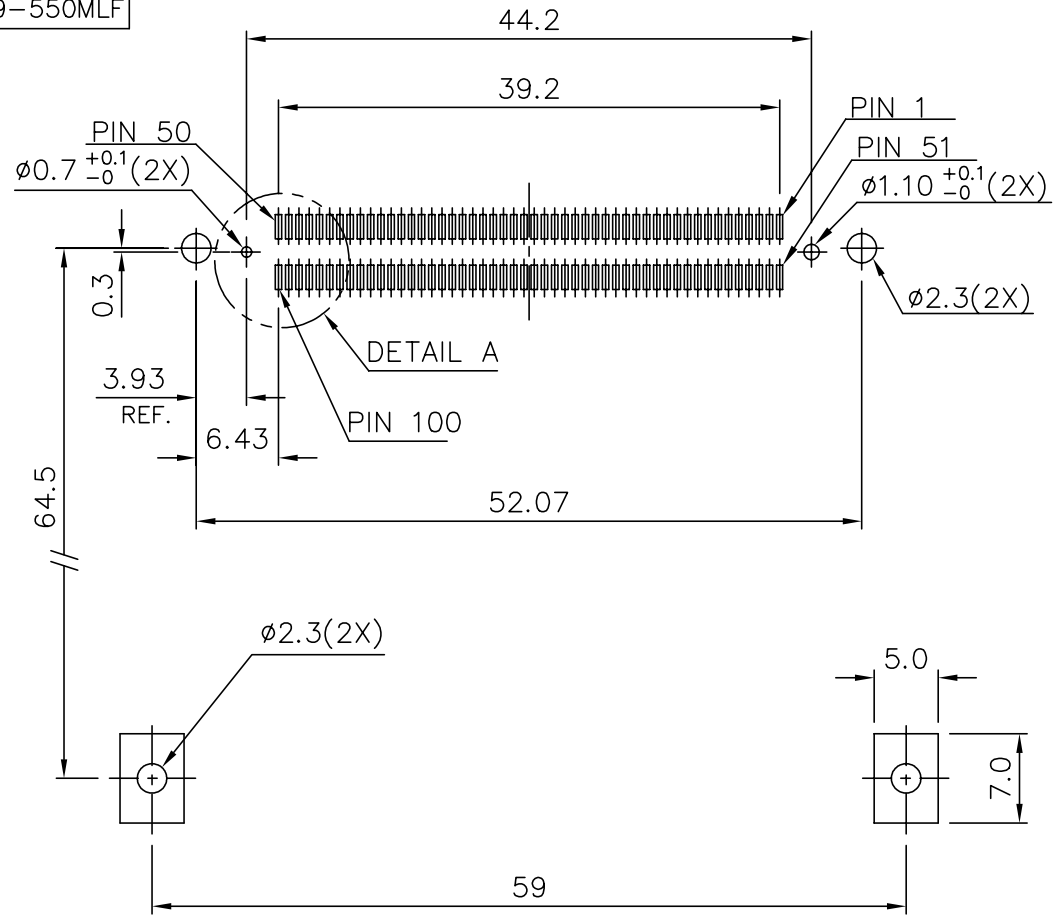
mat'l. code	surface	tolerance	projection	product family
	ISO 1302	ISO 406 ISO 1101	1:1	CARDBUS
tr	ecn	no	dr	date
tolerances unless otherwise specified				title
H		angles	linear	± 0.10
		±2'	MM	
			scale 1.5:1	
	dr	Mike Zhou	08/18/06	
	engr	Mike Zhou	08/18/06	
	chr	Mike Zhou	08/18/06	
	appd	Qin David	08/18/06	
dwg no				sheet 3 of 5
52599				A4
type				CUSTOMER Drawing

sheet	revision																		
index	sheet																		

FCI CONFIDENTIAL

FCI CONFIDENTIAL

PRODUCT NO.	
52599-550	
52599-550LF	
52599-550MLF	



DETAIL A

4 CARD INSERTION DIRECTION

mat'l. code	surface	tolerance	projection	product family
	ISO 1302	ISO 406 ISO 1101	1:1	CARDBUS
tr	ecn	n	dr	date
tolerances unless otherwise specified				title
H				
	angles	linear	± 0.10	CARDBUS NONE PUSH ROD, TYPE 1/2/3
	$\pm 2'$		scale 1.5:1	
	dr	Mike Zhou	08/18/06	dwg no
	enr	Mike Zhou	08/18/06	sheet 5 of 5
	chr	Mike Zhou	08/18/06	size
	app	Qin David	08/18/06	52599
				A4
				type CUSTOMER Drawing

sheet	revision																			
index	sheet																			

This document is the property of and embodies CONFIDENTIAL PROPRIETARY information of FCI. No part of this information or this document may be used in any way or disclosed to others without the written consent of FCI. Copyright FCI.