

All rights strictly reserved. Reproduction or issue to third parties in any form whatever is not permitted without written authority from the proprietor. Property of FCI. Copyright FCI.

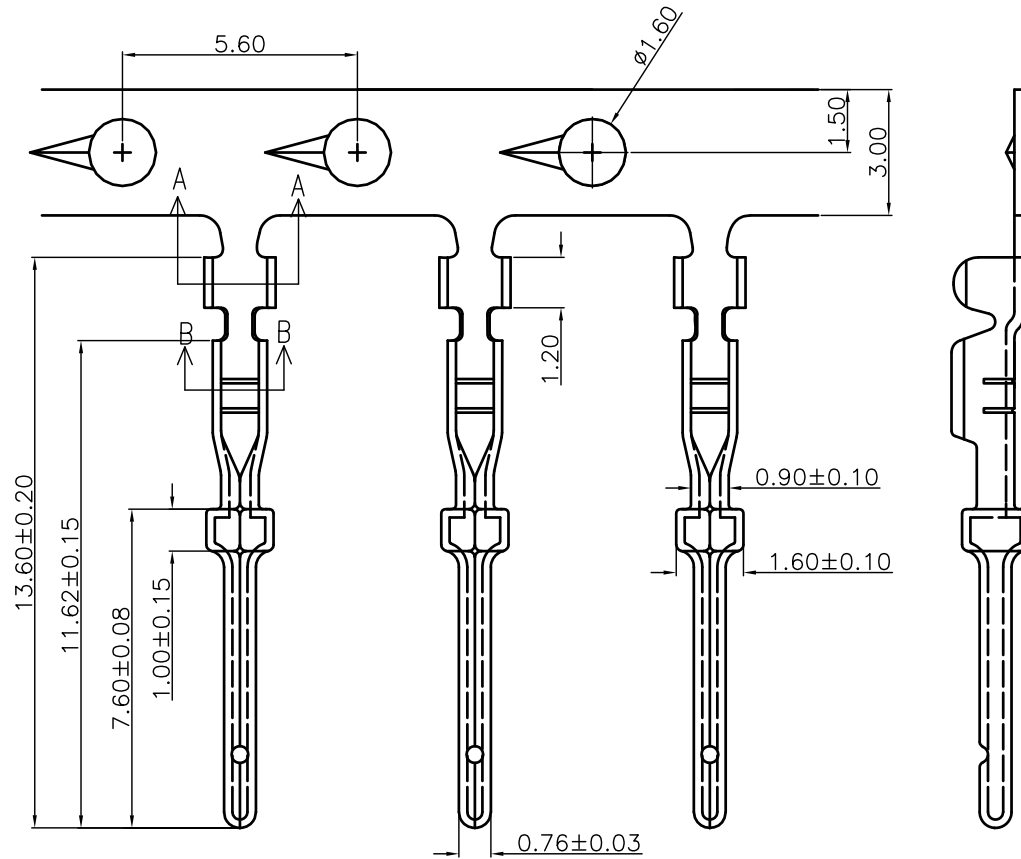


Tous droits strictement réservés. Reproduction ou communication à des tiers interdite sous quelque forme que ce soit sans autorisation écrite du propriétaire. Propriété de c FCI. Droits de reproduction FCI.

1 | 2

3

4



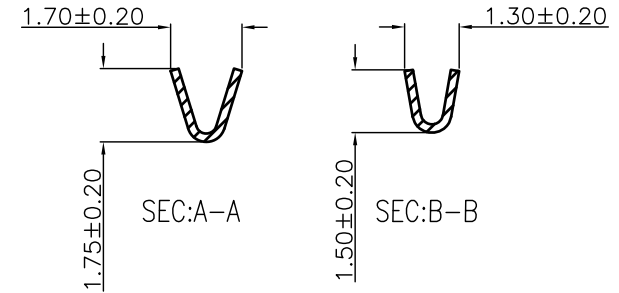
REMARK:

1. MATERIALS:

CONTACTS: COPPER ALLOY, GOLD(G\F or 30u") TOP OVER CONTACT AREA, 50u" Min. NICKEL UNDER PLATE.

2. PART NUMBER DESCRIPTION:

10090932-P XX X X LF
 SERIES NO. _____
 TYPE _____
 P: FIN (MALE) _____
 GAUGE SIZE _____
 24: 24-28(AWG)
 LF: ROHS COMPLIANT
 PACKAGING
 8: BOX, 500 PCS
 9: REEL, 10K PCS
 CONTACT FINISH
 4: GOLD FLASH
 6: 30u" GOLD



SIZE	PART NO.	PACKAGING
24-28AWG	10090932-P24*8LF	BOX, 500PCS
24-28AWG	10090932-P24*9LF	REEL, 10KPCS

mat'l. code				tolerances unless otherwise specified				CUSTOMER COPY		FCI		www.fciconnect.com	
ltr	ecn no	dr	date	linear	.X ± 0.38				projection	title			
A	T09-1157	J.H	12/10/09		.XX ± 0.25					H/D D-SUB CRIMPING MALE CONTACT			
					.XXX ± 0.10					product family D-SUB			
					0' ± 2'					code TWN			
				angles	dr	JASON HSU	12/10/09	MM	size	dwg no		sheet	
					enr	JASON HSU	12/10/09	scale	A4		10090932		1 of 1
					chr	GARY HSIEH	12/10/09	1:1					
					appd	JOSEPH HSIA	12/10/09						
sheet index	revision	A											
	sheet	01											

1 | 2

3

4

ACAD

PDM: Rev:A

STATUS: Released

Printed: Feb 24, 2010