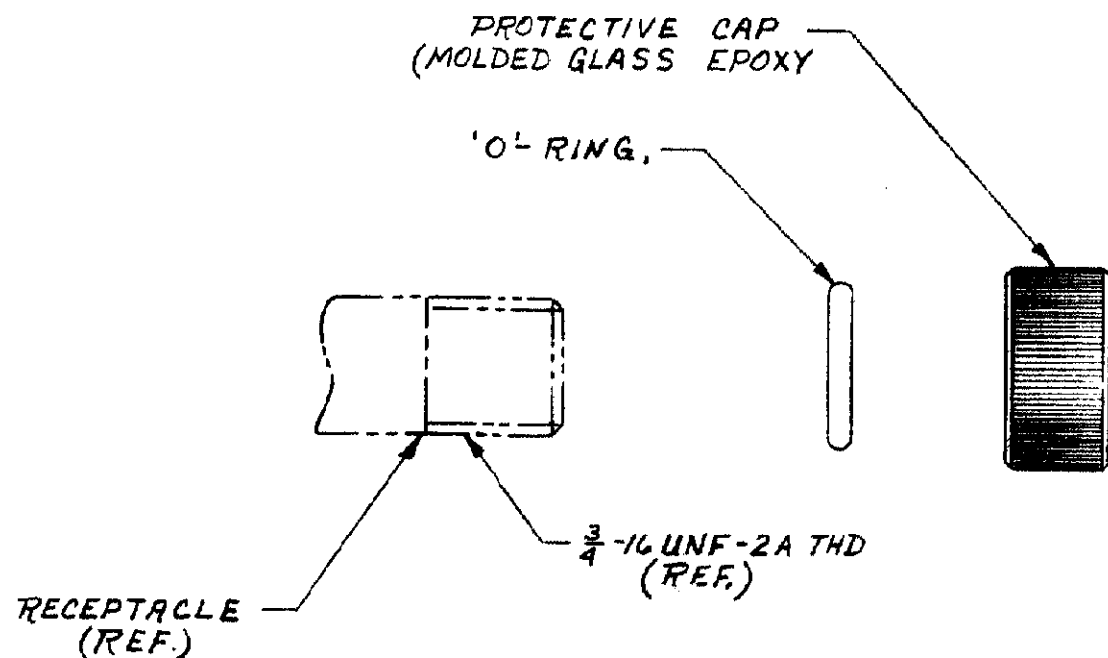


DRAWING MADE IN AMERICAN PROJECTION

© 1969 BY AMP INCORPORATED. ALL RIGHTS RESERVED. AMP PRODUCTS COVERED BY PATENTS AND/OR PATENTS PENDING.

THIS PRODUCT DESIGNED AND BUILT BY AMP INCORPORATED. NO LICENSE TO USE THAT DESIGN IN MANUFACTURE, OR TO USE ANY ISSUED OR PENDING PATENTS WHICH ARE INVOLVED, IS IMPLIED.

REVISIONS				
ZONE	LTR	DESCRIPTION	DATE	APPROVED



THIS KIT CONSISTS OF THE FOLLOWING ITEMS

1. LGH CAP
2. O-RING
3. INSTRUCTION SHEET.

PART NO IS THIS DWG - 1

QTY REQD	QTY REQD	ITEM NO.	DWG SIZE	PART OR IDENTIFYING NO.	NOMENCLATURE OR DESCRIPTION	SYMBOL
-2	-1					

PARTS LIST			
QTY REQD	FINAL ASSY	NEXT ASSY	USED ON

UNLESS OTHERWISE SPECIFIED: DIMENSIONS ARE IN INCHES TOLERANCES .00 ± .000 ±		CONTRACT NO. DR <i>L. Kelly</i> 1-10-69	
MATERIAL:		CHK	
FINISH:		APPD <i>K. K.</i> 1-13-69	
OTHER APPD		DSGN APPD	
AMP INCORPORATED CAPITRON DIVISION ELIZABETHTOWN, PENNSYLVANIA		NAME KIT, LGH-2 & 3 PROTECTIVE CAP WITH O-RING SEAL	
SIZE <b>B</b>	CODE IDENT NO. 00779	NUMBER 849253	
SCALE	WT	SHEET 1/1	

PRINT DISK 3