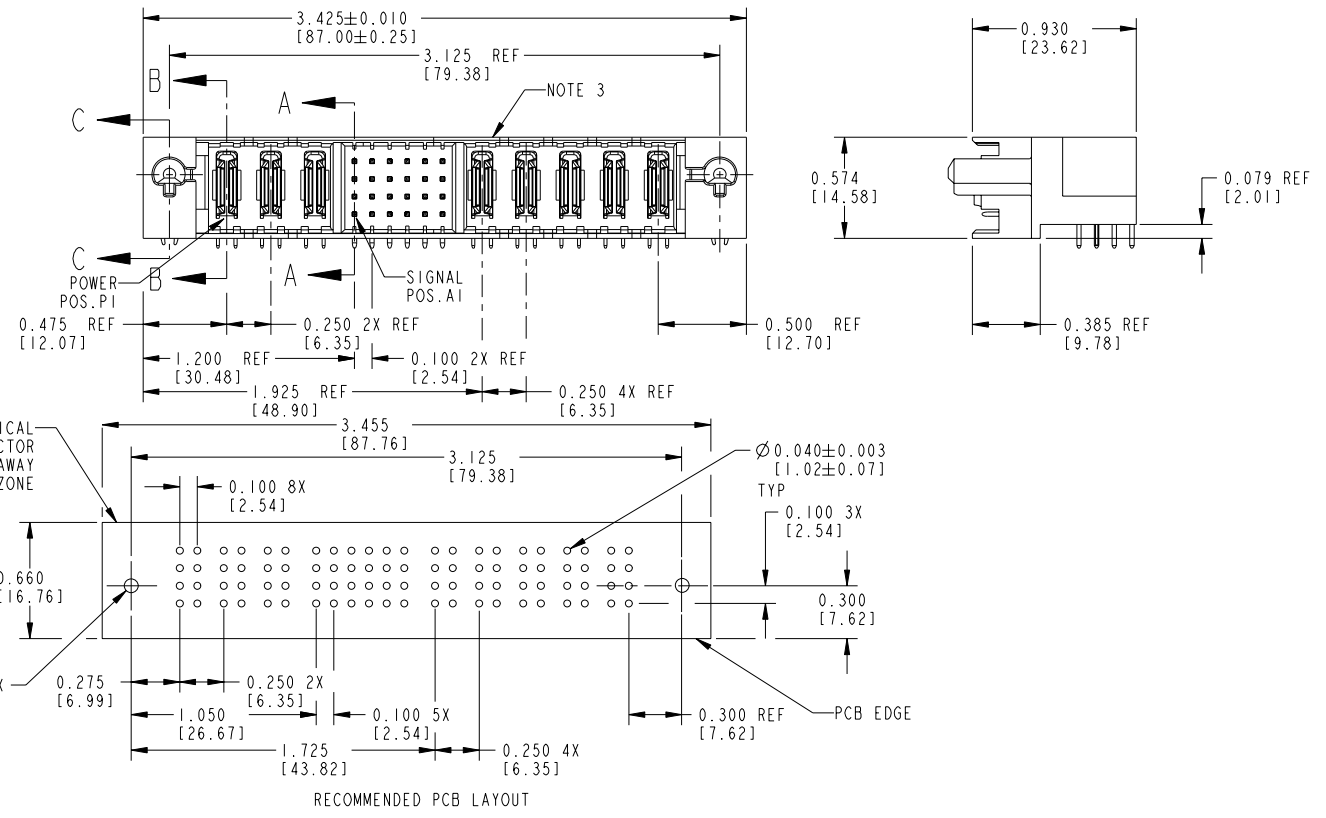


Tous droits strictement réservés. Reproduction ou communication à des tiers interdite sous quelque forme que ce soit sans autorisation écrite du propriétaire. Propriété de c FCI. Droits de reproduction FCI.

All rights strictly reserved. Reproduction or issue to third parties in any form whatever is not permitted without written authority from the proprietor. Property of FCI. Copyright FCI.

**FCI**

PRODUCT No.	ROWS	POWER			SIGNAL								POWER					E2
		E1	P1	P2	P3	1	2	3	4	5	6	P4	P5	P6	P7	P8		
51526-XX001-- NOTE: 2	D C B A																	



CODE	DIM "M" ±0.010 [0.25]		CONTACT TYPE
G	0.220	[5.59]	SIGNAL
R	0.270	[6.86]	SIGNAL
S	0.270	[6.86]	SIGNAL
T	0.270	[6.86]	SIGNAL
U	0.270	[6.86]	SIGNAL
PA	N/A	[N/A]	POWER
HA	N/A	[N/A]	HOLD-DOWN

mat'l code				NOTE 1		tolerances unless otherwise specified		CUSTOMER		
ltr	ecn no.	dr	date	linear	.XX±.01/.X±.3	COPY		www.fciconnect.com		
A	V91742	LEV4	11/19/99		.XXX±.005/.XX±.13	projection		title 3P + 24S + 5P RIGHT ANGLE SOLDER HEADER		
B	V02754	EKK	12-01-00		.XXX±.0020/.XX±.051	INCH/MM		product family PWRBLADE code 213		
C	V12517	JWS	12/27/01	angles	0° ± 2°	scale 1:1		size dwg no 51526 sheet 1 of 2		
D	DG06-0011	CS	01/09/06	dr	M. CLOUSER 06/26/98					
				enr	J. BROWN 06/26/98					
				chr	J. BROWN 06/26/98					
				appd	J. BROWN 06/26/98					
sheet index	revision sheet	D	D							
		1	2							

sheet index		revision sheet	D	D							
			1	2							

Pro/E

cage code 22526

PDM: Rev:D

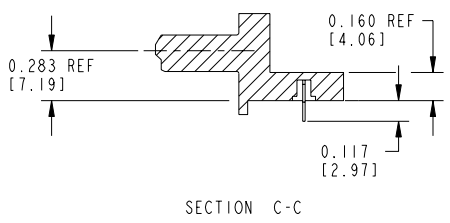
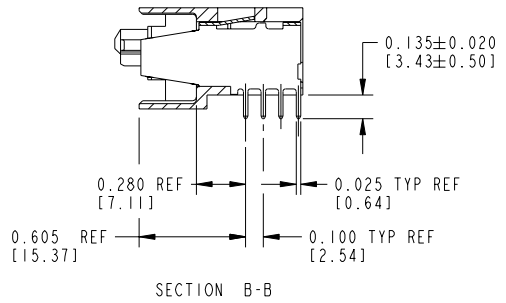
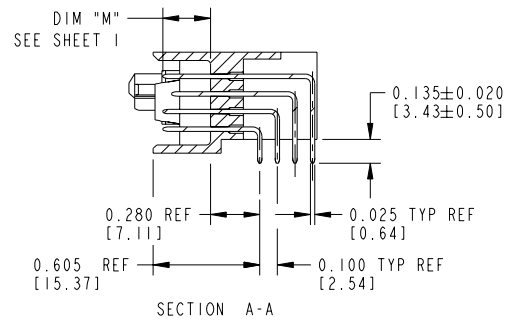
STATUS: Released

Printed: Dec 20, 2010

Tous droits strictement réservés. Reproduction ou communication à des tiers interdite sous quelque forme que ce soit sans autorisation écrite du propriétaire. Propriété de c FCI. Droits de reproduction FCI.

All rights strictly reserved. Reproduction or issue to third parties in any form whatever is not permitted without written authority from the proprietor. Property of FCI. Copyright FCI.

PRODUCT NUMBER  
51526-XX001\_\_  
NOTE: 2



CONNECTOR NOTES:

1. HOUSING MATERIAL: UL94 V-0 GLASS FILLED HIGH TEMP. THERMOPLASTIC.  
SIGNAL PIN MATERIAL: COPPER ALLOY.  
POWER CONTACT MATERIAL: COPPER ALLOY.
2. PLATING:  
51526-XX001, 51526-XX001LF, PLATING SPEC SEE PRINT: 100064183.
3. MANUFACTURER'S NAME, P/N, AND DATE CODE TO APPEAR ON THIS SURFACE.
4. PRODUCT SPECIFICATION GS-12-149.

PCB NOTES:

5. ALL DIMENSIONS ARE BASIC UNLESS OTHERWISE SPECIFIED.
6. ALL THROUGH HOLES ARE LOCATED WITH A TRUE POSITION OF 0.004[0.10]
7. ALL HOLE DIAMETERS ARE FINISHED HOLE SIZE
8. Ø0.079 [2.49] THROUGH HOLES ARE UNPLATED
9. Ø0.0453±0.0010 [1.151±0.025] DRILLED HOLES PLATED WITH 0.0003[0.008] MIN SnPb OVER 0.001[0.03] to 0.003[0.08] Cu PLATING TO ACHIEVE A 0.040±0.003 [1.02±0.07] HOLE

mat'l code		NOTE 1		tolerances unless otherwise specified		CUSTOMER		 www.fciconnect.com	
ltr	ecn no.	dr	date	linear	.XX±.01/.X±.3	COPY		projection	title
D					.XXX±.005/.XX±.13				3P + 24S + 5P RIGHT ANGLE SOLDER HEADER
				angles	.XXX±.0020/.XXX±.051				product family
				dr	0° ± 2°	INCH/MM			PWRBLADE
				enr	M. CLOUSER 06/26/98	scale		A	code
				chr	J. BROWN 06/26/98	1:1		size	213
				appd	J. BROWN 06/26/98			dwg no	sheet
sheet index	revision sheet							51526	2

cage code 22526

Pro/E

PDM: Rev:D

STATUS: Released

Printed: Dec 20, 2010