
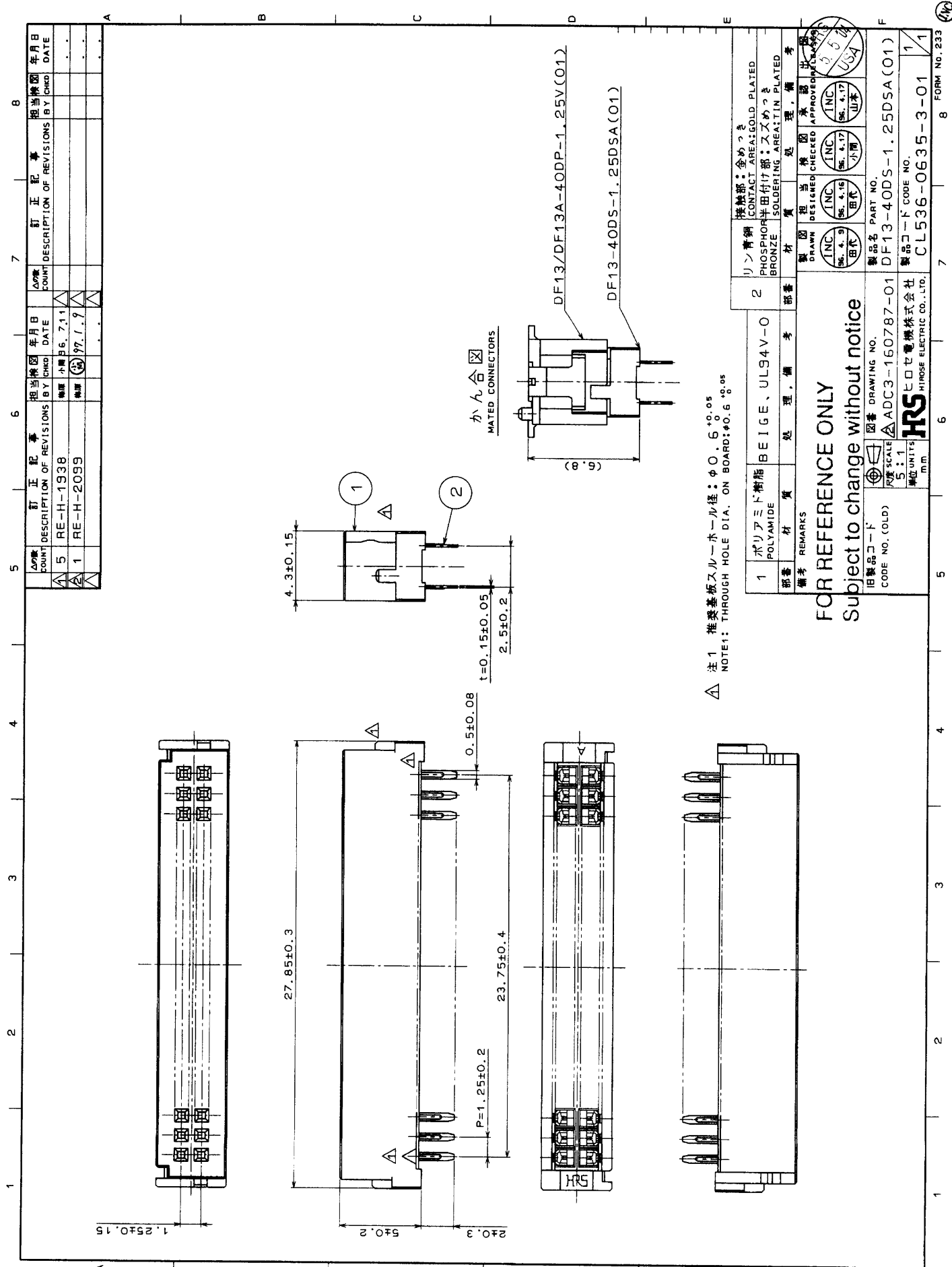


COUNT	DESCRIPTION OF REVISIONS	BY	CHKD	DATE	COUNT	DESCRIPTION OF REVISIONS	BY	CHKD	DATE
△					△				
△					△				
<b>APPLICABLE STANDARD</b>									
RATING	OPERATING TEMPERATURE RANGE	-35 °C TO +85 °C(NOTE1)			STORAGE TEMPERATURE RANGE	-10 °C TO +60 °C			
	VOLTAGE	150 V AC			APPLICABLE CONTACT	-			
	CURRENT	1 A			APPLICABLE CONNECTOR	DF13/13A-40DP-1. 25V(01)			
					APPLICABLE CABLE	-			
<b>SPECIFICATIONS</b>									
ITEM		TEST METHOD			REQUIREMENTS			QT	AT
<b>CONSTRUCTION</b>									
GENERAL EXAMINATION		VISUALLY AND BY MEASURING INSTRUMENT.			ACCORDING TO DRAWING.			○	○
MARKING		CONFIRMED VISUALLY.						○	○
<b>ELECTRICAL CHARACTERISTICS</b>									
CONTACT RESISTANCE		100 mA (DC OR 1000 Hz).			30 mΩ MAX.			○	-
CONTACT RESISTANCE MILLIVOLT LEVEL METHOD		20 mV MAX, mA(DC OR 1000 Hz).						-	-
INSULATION RESISTANCE		100 V DC.			500 MΩ MIN.			○	-
VOLTAGE PROOF		500 V AC FOR 1 min.			NO FLASHOVER OR BREAKDOWN.			○	-
<b>MECHANICAL CHARACTERISTICS</b>									
CONTACT INSERTION AND EXTRACTION FORCES		BY STEEL GAUGE.			INSERTION FORCE N MAX. EXTRACTION FORCE N MIN.			-	-
INSERTION AND WITHDRAWAL FORCES		MEASURED BY APPLICABLE CONNECTOR.			INSERTION FORCE N MAX. EXTRACTION FORCE N MIN.			-	-
MECHANICAL OPERATION		50 TIMES INSERTIONS AND EXTRACTION.			① CONTACT RESISTANCE: 30 mΩ MAX. ② NO DAMAGE, CRACK OR LOOSENESS OF PARTS.			○	-
VIBRATION		FREQUENCY 10 TO 55 Hz, SINGLE AMPLITUDE 0.75 mm, - m/s <sup>2</sup> AT 2 h, UNDER 10 CYCLES.			① NO ELECTRICAL DISCONTINUITY OF 1 μs.			○	-
SHOCK		490 m/s <sup>2</sup> DURATION OF PULSE 11 ms AT 3 TIMES FOR 3 DIRECTIONS.			② CONTACT RESISTANCE: 30 mΩ MAX. ③ NO DAMAGE, CRACK OR LOOSENESS OF PARTS.			○	-
<b>ENVIRONMENTAL CHARACTERISTICS</b>									
RAPID CHANGE OF TEMPERATURE		TEMPERATURE -55 → 15~35 → +85 → 15~35 °C TIME 30 → 2~3 → 30 → 2~3 min UNDER 5 CYCLES.			① CONTACT RESISTANCE: 30 mΩ MAX. ② INSULATION RESISTANCE: 500 MΩ MIN. ③ NO DAMAGE, CRACK OR LOOSENESS OF PARTS.			○	-
DAMP HEAT (STEADY STATE)		EXPOSED AT 40 ± 2 °C, 90 ~ 95 %, 96 h.						○	-
CORROSION, SALT MIST		EXPOSED IN 5 % SALT WATER SPRAY FOR 48 h.			① CONTACT RESISTANCE: - mΩ MAX. ② NO HEAVY CORROSION.			○	-
HYDROGEN SULPHIDE		EXPOSED IN PPM FOR h. (TEST STANDARD: JEIDA-38)			① CONTACT RESISTANCE: mΩ MAX. ② NO HEAVY CORROSION.			-	-
SULPHUR DIOXIDE		EXPOSED IN 10 PPM FOR 96 h. (TEST STANDARD: JEIDA-39)			① CONTACT RESISTANCE: - mΩ MAX. ② NO HEAVY CORROSION.			○	-
RESISTANCE TO SOLDERING HEAT		SOLDER TEMPERATURE, 260 ± 5 °C FOR IMMERSION, DURATION, 5 s.			NO DEFORMATION OF CASE OF EXCESSIVE LOOSENESS OF THE TERMINALS.			○	-
SOLDERABILITY		SOLDERED AT SOLDER TEMPERATURE, 230 ± 10 °C FOR IMMERSION DURATION, 3 s.			SOLDER SHALL COVER A MINIMUM OF 95 % OF THE SURFACE BEING IMMERSED.			○	-
<b>REMARKS</b>									
NOTE 1: INCLUDE THE TEMPERATURE RISING BY CURRENT.					DRAWN	DESIGNED	CHECKED	APPROVED	RELEASED
FOR REFERENCE ONLY					<i>S. Tashiro</i>	<i>S. Tashiro</i>	<i>J. Ona</i>	<i>H. Yamamoto</i>	
Subject to change without notice Unless otherwise specified, refer to MIL-STD-1344.					'96.4.24	'96.4.24	'96.4.24	'96.4.24	
Note QT:Qualification Test AT:Assurance Test ○:Applicable Test									
<b>HRS</b> HIROSE ELECTRIC CO., LTD.				SPECIFICATION SHEET			PART NO. DF13-40DS-1. 25DSA(01)		
CODE NO.(OLD) CL		DRAWING NO. ELC4-160787-01			PART NO. CL 536 - 0635 - 3 - 01			1/1	

TO





△ 注1 推奨基板スルーホール径:  $\phi 0.6 \pm 0.05$   
 NOTE1: THROUGH HOLE DIA. ON BOARD:  $\phi 0.6 \pm 0.05$

かん合 ☑  
 MATED CONNECTORS

Δ訂数 COUNT	訂正記号 DESCRIPTION OF REVISIONS	年月日 DATE	訂正記号 DESCRIPTION OF REVISIONS	年月日 DATE	訂正記号 DESCRIPTION OF REVISIONS	年月日 DATE
5	RE-H-1938	小間 86.7.13				
1	RE-H-2099	小間 97.1.9				

部番 PART NO.	材質 MATERIAL	処理 FINISH	備考 REMARKS
1	ポリアミド樹脂 POLYAMIDE	BEIGE, UL94V-0	
2	リン青銅 PHOSPHOR BRONZE	金めっき AREA: GOLD PLATED	

製図 DRAWN	検査 CHECKED	承認 APPROVED	発行 DATE
田代 田代	小間	山本	97.5.24

部品名 PART NO.	製品コード PRODUCT CODE NO.
DF13-40DS-1.25DSA(O1)	CL536-0635-3-01

FOR REFERENCE ONLY  
 Subject to change without notice

旧製品コード  
 CODE NO. (OLD)  
 5.4.1  
 単位: mm  
 HRS HIROSE ELECTRIC CO., LTD.

TO

