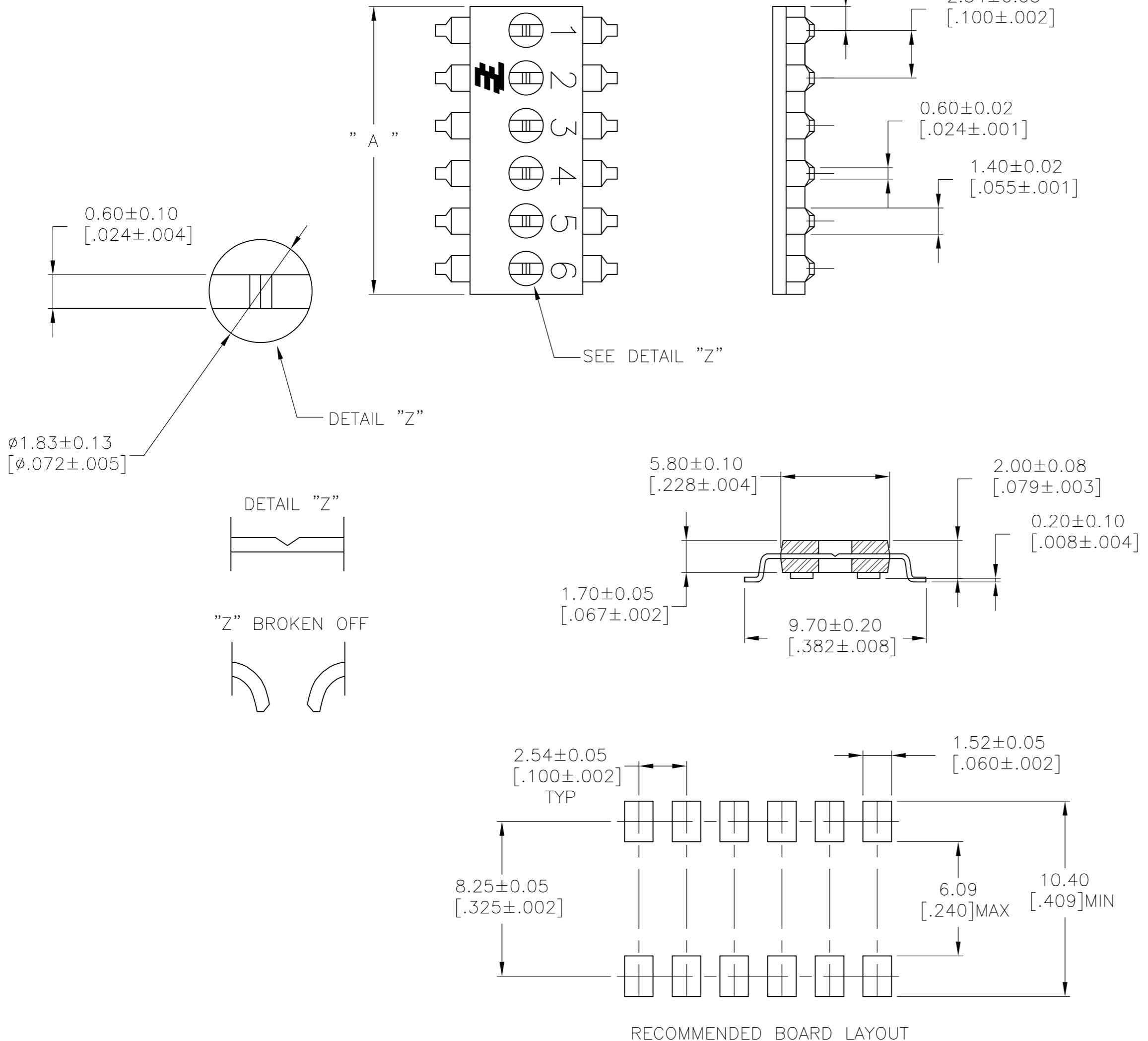


THIS DRAWING IS UNPUBLISHED. RELEASED FOR PUBLICATION  
 © COPYRIGHT - By - ALL RIGHTS RESERVED.

LOC		DIST		REVISIONS			
P	LTR	DESCRIPTION	DATE	DWN	APVD		
AD	00	C	REVISED PER ECO-12-007413	21APR12	KH	PO	



**SPECIFICATIONS:**  
**MATERIAL**  
 CASE: HTN 30% GF UL94V-0, BLACK  
 TERMINAL: COPPER ALLOY, TIN OVER NICKEL PLATE

- 1 ALL MATERIALS AND FINISHES SHALL COMPLY WITH EU DIRECTIVE 2002/95/EC OF 27JAN2003 (ROHS)
- 2 TAPE AND REEL PER EIA-481

30.48 [1.200]	12	2	2-1825189-0
25.40 [1.000]	10	2	1-1825189-9
22.86 [.900]	9	2	1-1825189-8
20.32 [.800]	8	2	1-1825189-7
17.78 [.700]	7	2	1-1825189-6
15.24 [.600]	6	2	1-1825189-5
12.70 [.500]	5	2	1-1825189-4
10.16 [.400]	4	2	1-1825189-3
7.62 [.300]	3	2	1-1825189-2
2.54 [.200]	2	2	1-1825189-1
30.48 [1.200]	12		1-1825189-0
25.40 [1.000]	10		1825189-9
22.86 [.900]	9		1825189-8
20.32 [.800]	8		1825189-7
17.78 [.700]	7		1825189-6
15.24 [.600]	6		1825189-5
12.70 [.500]	5		1825189-4
10.16 [.400]	4		1825189-3
7.62 [.300]	3		1825189-2
2.54 [.200]	2		1825189-1
DIM A	POSITION		PART NO.

THIS DRAWING IS A CONTROLLED DOCUMENT.		DWN	B.S.VISWESWARA	10MAY05	 TE Connectivity
DIMENSIONS: mm [INCHES]		CHK	M.S.SARVER	-	
TOLERANCES UNLESS OTHERWISE SPECIFIED:		APVD	M.S.SARVER	-	
0 PLC ± - 1 PLC ± - 2 PLC ± 0.03[.001] 3 PLC ± - 4 PLC ± - ANGLES ± -		PRODUCT SPEC	-	-	
MATERIAL	FINISH	WEIGHT	-	-	NAME SHUNT, DIP, PROGRAMMABLE SMT
CUSTOMER DRAWING		SCALE	5:1	SHEET	1 OF 1