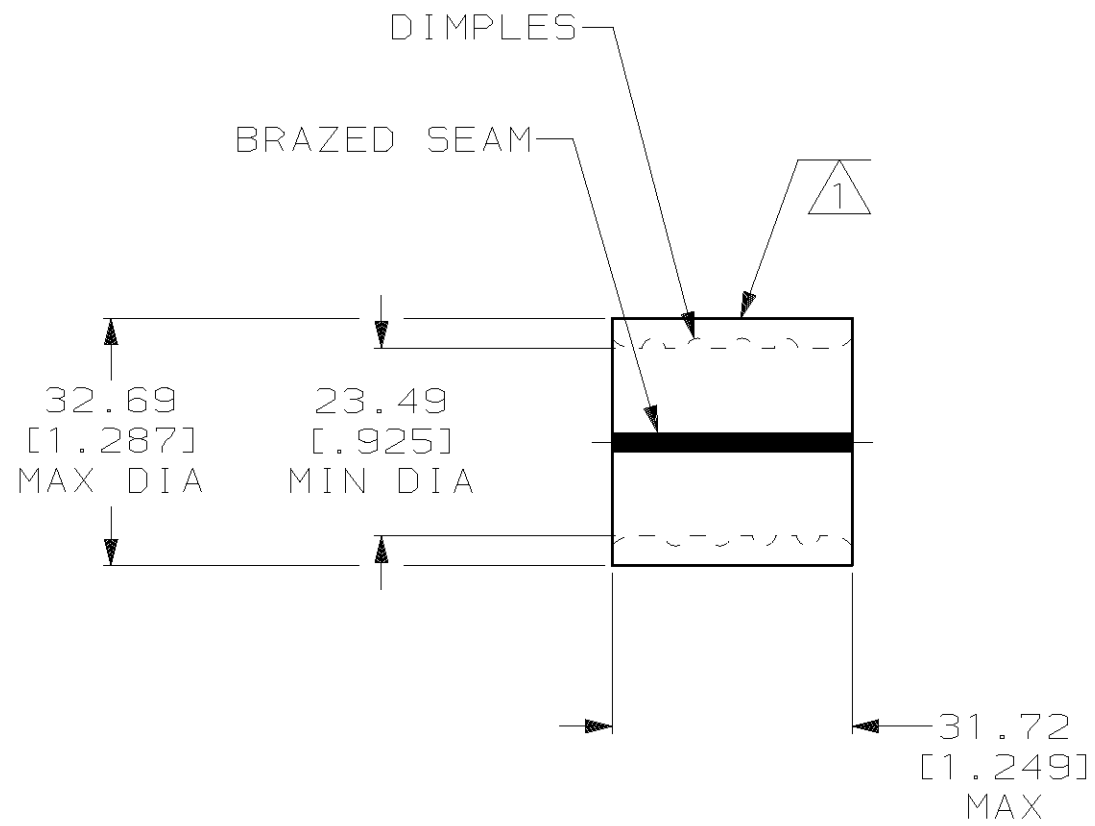


THIS DRAWING IS UNPUBLISHED. RELEASED FOR PUBLICATION, 19
 © COPYRIGHT 19 BY AMP INCORPORATED. ALL INTERNATIONAL RIGHTS RESERVED.

LOC	DIST	P	F	ZONE	LTR	DESCRIPTION	DATE	APPD
G	14				D	REV PER 063A-0435-02	30SEP02	JR MS



AMP WIRE RANGE	E13288 Listed
400 MCM STRANDED	400 MCM STRANDED
LR7189 Certified	MILITARY P/N AND CLASS
400 MCM STRANDED	NOT APPLICABLE

- ① STAMP AMP W* 400 MCM APPROX AS SHOWN
- 2 MATERIAL THK: 3.91^{±0.10} [.154^{±.004}]
- 3 STAMP FOR MANUFACTURING LOCATION OR CODE PERMISSIBLE.

AMP INCORPORATED
CUSTOMER SERVICE SYSTEMS

FOR ADDITIONAL PRODUCT INFORMATION OR COPIES OF DRAWINGS AND TECHNICAL DOCUMENTS
 PRODUCT INFORMATION CENTER
 1-800-522-6752

FOR APPLICATION TOOLING INFORMATION
 TOOLING ASSISTANCE CENTER
 1-800-722-1111

FOR ORDER ENTRY
 1-800-526-5142

MAX RECOMMENDED OPERATING TEMPERATURE:
 170°C MAX

VOLTAGE RATING:
 NOT APPLICABLE

CIRCULAR MIL AREA:
 192.5-242.2mm² [380-478] MCM STRANDED

THIS DRAWING IS A CONTROLLED DOCUMENT FOR AMP INCORPORATED. IT IS SUBJECT TO CHANGE AND THE CONTROLLING ENGINEERING ORGANIZATION SHOULD BE CONTACTED FOR THE LATEST REVISION.

DO NOT SCALE PRINT. UNLESS SPECIFIED DIMENSIONS IN mm [INCHES].
 TOLERANCES ON:
 2 PLC DEC ± 0.20 [.008]
 3 PLC DEC ± -
 ANGLES ± -

MATERIAL
 COPPER PER ASTM B-152 ANNEALED

FINISH
 TIN PLATE
 0.00254 [.000100] MIN THK PER MIL-T-10727

DR 5/6/93
 DK SCHRUM

CHK 5/14/93
 AJ KAUFMAN

APPD 5/14/93
 RE ROSER

APPD 5/14/93
 CR RHOADS

PRODUCT SPEC -

APPLICATION SPEC -

WEIGHT -

AMP AMP Incorporated
 Harrisburg, PA 17105-3608

NAME
 SPLICE, PARALLEL, SOLISTRAND,
 WIRE SIZE: 400 MCM

SIZE **B** CAGE CODE 00779 DRAWING NO **C-322277**

SCALE 1:1 SHEET 1 OF 1

322275
 PART NO